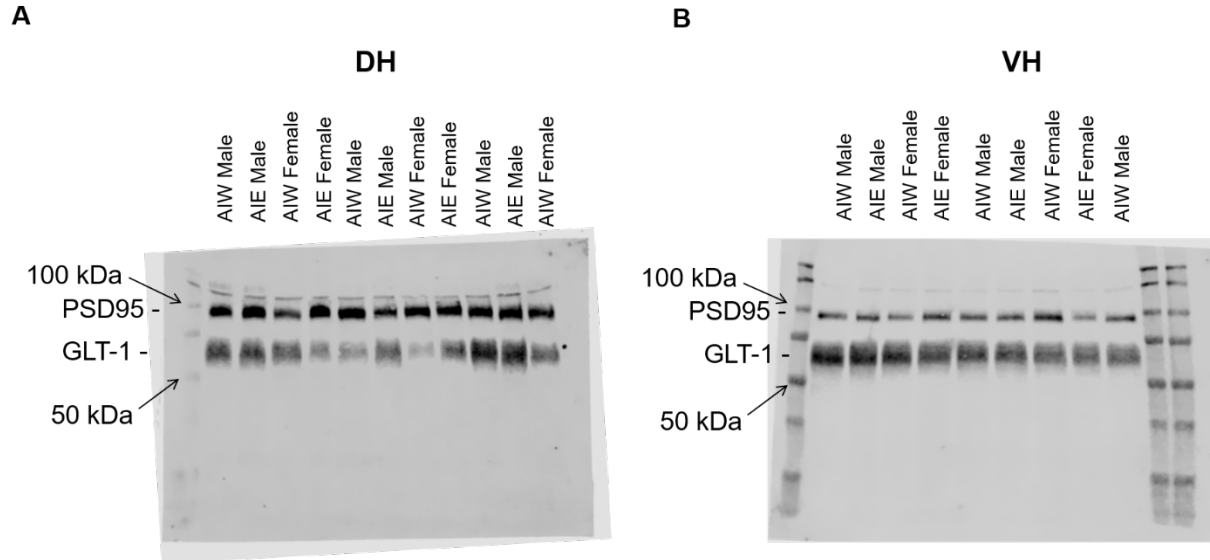
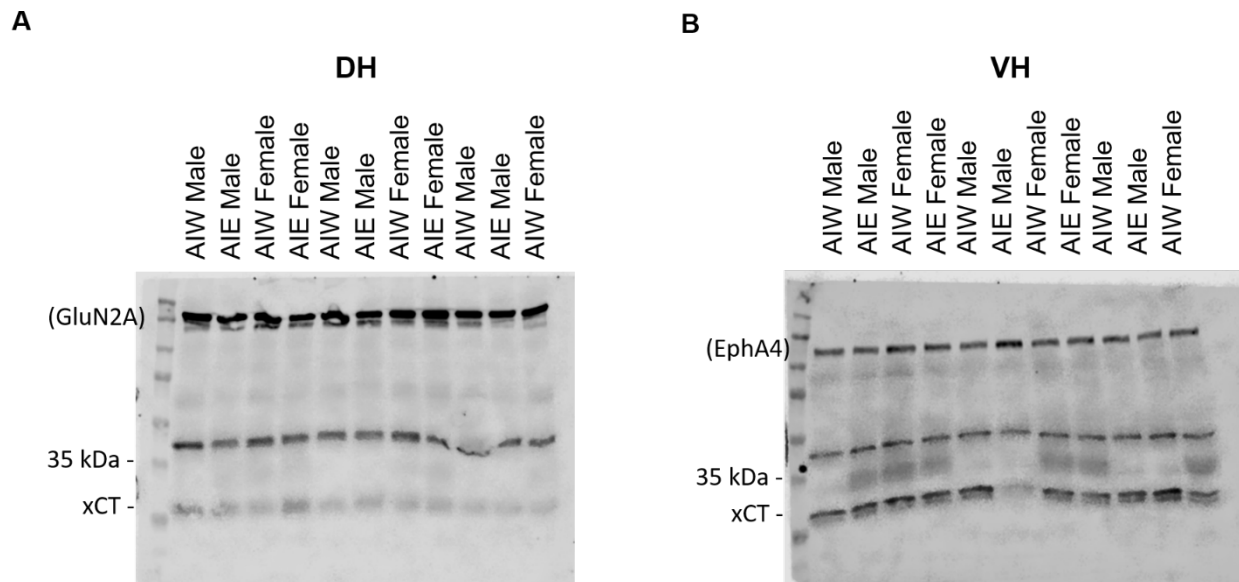


## Supplemental Materials

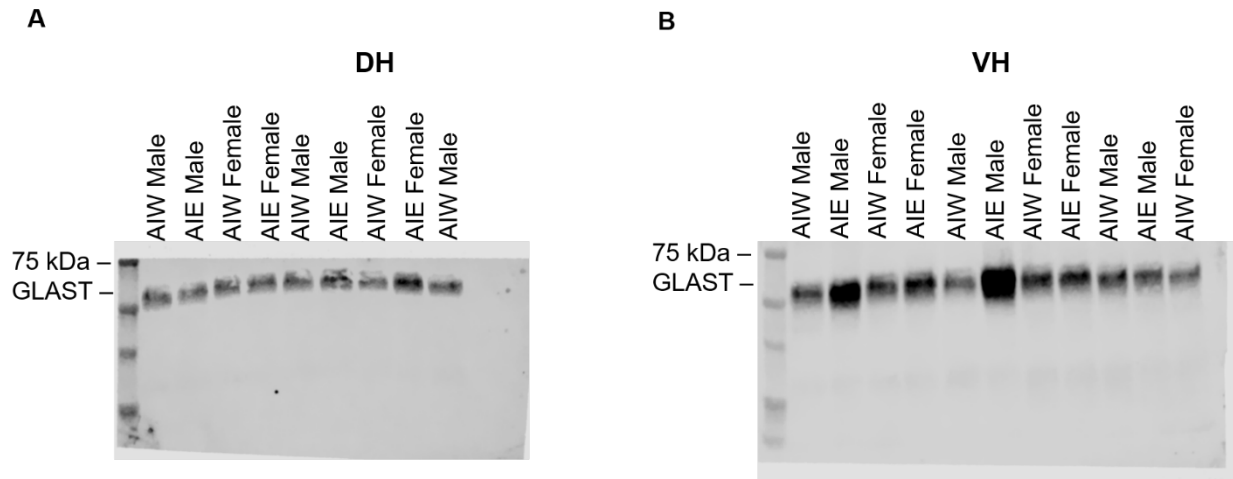
**Supplemental Figure 1. GLT-1 and PSD-95 Synaptic Membrane Fraction Western Blot.** Representative image of blots for GLT-1 (~70 kDa) and PSD-95 (~95 kDa) in dorsal (A) and ventral (B) hippocampus.



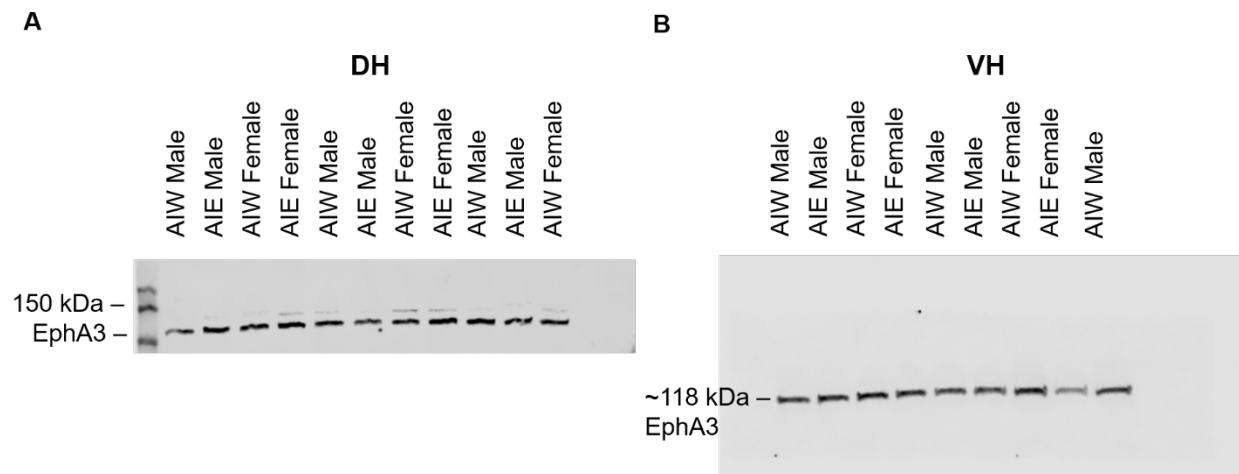
**Supplemental Figure 2. Cystine-Glutamate Antiporter Synaptic Membrane Fraction Western Blot.** Representative image of blots for Cystine-Glutamate Antiporter (xCT, ~27 kDa) in dorsal (A) and ventral (B) hippocampus. Dorsal hippocampus representative image also contains GluN2A; ventral hippocampus image contains EphA4.



**Supplemental Figure 3. GLAST Synaptic Membrane Fraction Western Blot.** Representative image of blots for GLAST (~75 kDa) in dorsal (A) and ventral (B) hippocampus. Membranes were cut above 75 kDa before blotting.

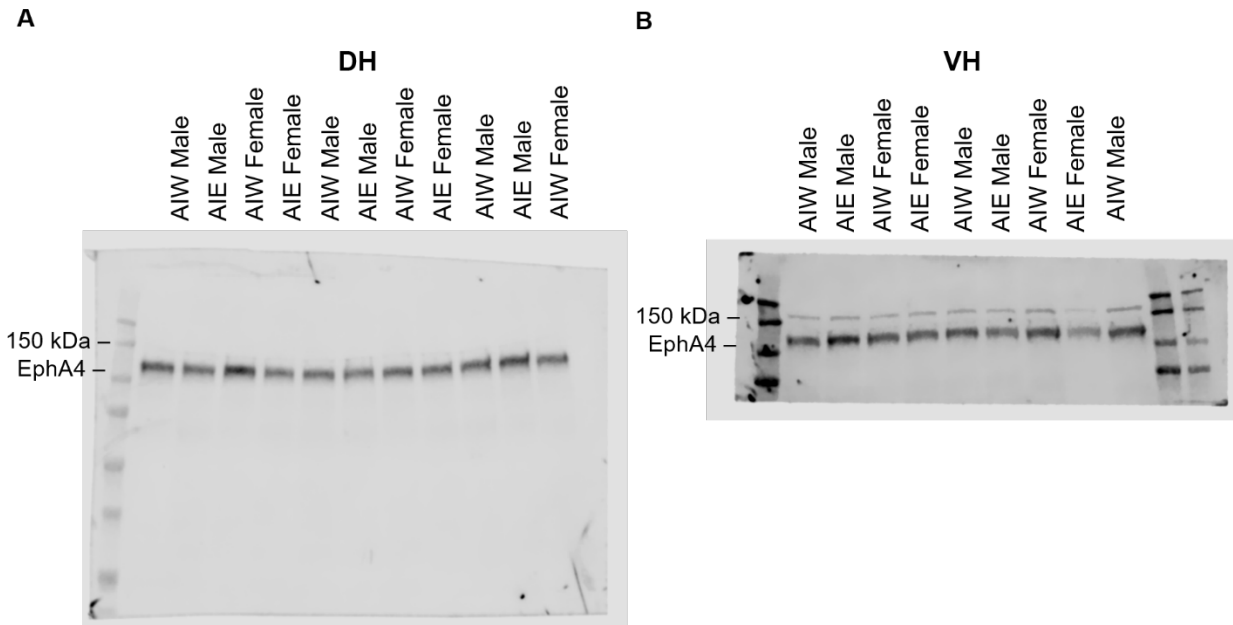


**Supplemental Figure 4. Ephrin A3 Synaptic Membrane Fraction Western Blot.** Representative image of blots for EphA3 (~118 kDa) in dorsal (A) and ventral (B) hippocampus. Membranes were cut below 100 kDa before blotting.



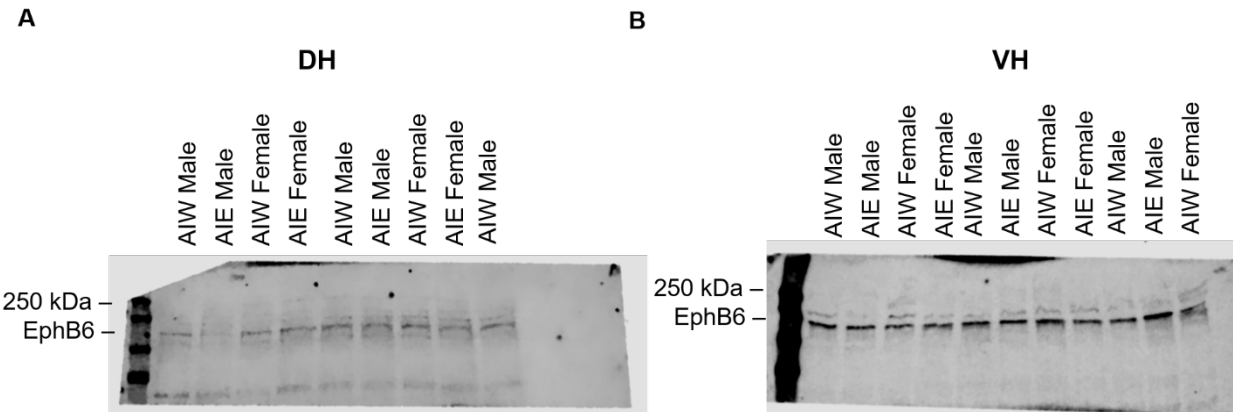
**Supplemental Figure 5. Ephrin A4 Synaptic Membrane Fraction Western Blot.**

Representative image of blots for EphA4 (~118 kDa) in dorsal (A) and ventral (B) hippocampus. VH membrane was cut below 75 kDa before blotting.



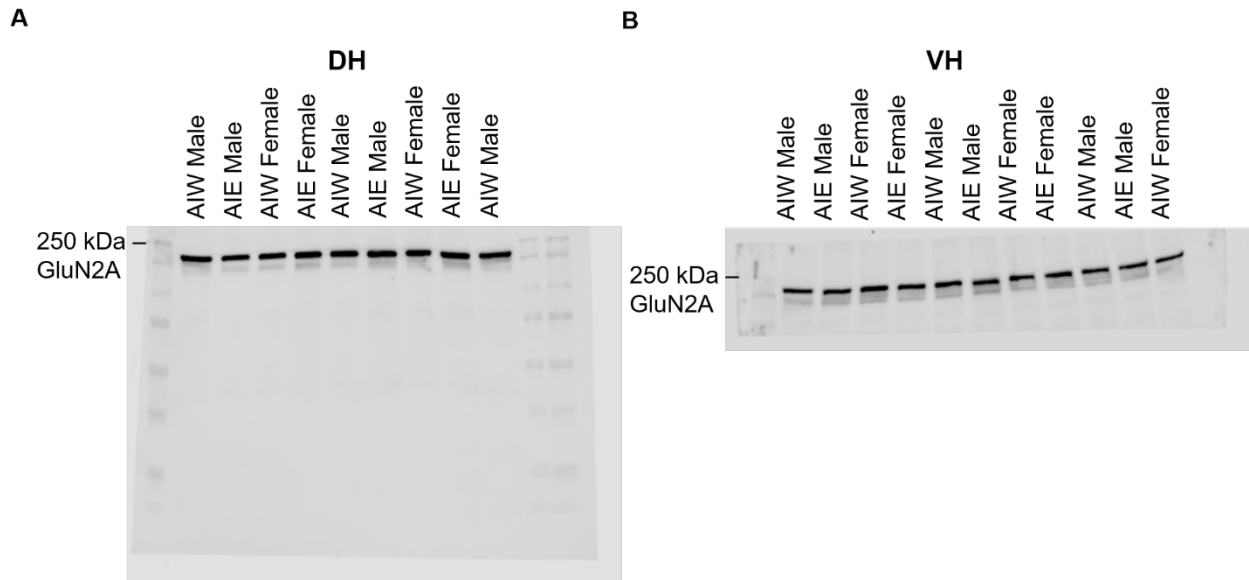
**Supplemental Figure 6. Ephrin B6 Synaptic Membrane Fraction Western Blot.**

Representative image of blots for EphB6 (~118 kDa) in dorsal (A) and ventral (B) hippocampus. Membranes were cut below 75 kDa before blotting.



**Supplemental Figure 7. GluN2A Synaptic Membrane Fraction Western Blot.**

Representative image of blots for GluN2A (~165 kDa) in dorsal (A) and ventral (B) hippocampus. VH membrane was cut below 100 kDa before blotting.



**Supplemental Figure 8. GluN2B Synaptic Membrane Fraction Western Blot.**

Representative image of blots for GluN2B (~165 kDa) in dorsal (A) and ventral (B) hippocampus. VH membrane was cut below 100 kDa before blotting.

