

## SUPPLEMENTARY MATERIAL

Supplemental Table S1 – Valve sizing and annulus sizes for balloon-expandable and self-expandable valves

Valve sizes	Self-expandable n=625	Mean (95% CI) Annulus size in mm, TOE derived	Balloon-Expandable n=170	Mean (95% CI) Annulus size in mm, TOE derived
23 – % of patients	0%	n.a.	33.1%	21.14 (20.79 - 21.49)
26 – % of patients	29.6%	20.59 (20.05 - 21.13)	66.9%	23.03 (22.77 - 23.29)
29 – % of patients	57.1%	24.09 (23.66 - 24.52)	0%	n.a.
31 – % of patients	13.2%	26.00 (24.97 - 27.03)	n.a.	n.a.

Supplemental Table S2 – Baseline Characteristics of the Study Population, Self-expandable and Balloon-expandable valves

CHARACTERISTICS	All patients n=795	Self-expandable n=625	Balloon-Expandable n=170	p
Age (years)	81.0 (77.0;85.0)	81.0 (77.0;85.0)	82.0 (78.0;85.0)	<b>0.041</b>
Male sex (%)	330 (41.5%)	300 (48.0%)	30 (17.6%)	<b>&lt;0.001</b>
Body mass index (kg/m <sup>2</sup> )	27.3 (24.1;30.9)	27.2 (24.2;30.8)	27.4 (23.6;31.2)	0.894
Logistic EuroSCORE	18.5 (12.8;29.0)	18.3 (12.7;29.1)	19.8 (13.1;28.5)	0.602
STS-Score Risk of mortality	8.1 (5.4;12.3)	7.9 (5.3;12.4)	9.3 (5.8;12.2)	0.168
eGFR (ml/min/1.73m <sup>2</sup> )	53 (39;69)	54 (40;70)	53 (38;68)	0.484
NYHA class - no. (%)				
II	124 (15.6%)	93 (14.9%)	31 (18.2%)	0.285
III	494 (62.1%)	389 (62.2%)	105 (61.8%)	0.910
IV	132 (16.6%)	105 (16.8%)	27 (15.8%)	0.776
Diabetes mellitus - no. (%)	345 (43.4%)	267 (42.7%)	78 (45.9%)	0.191
Hypertension - no. (%)	717 (90.2%)	569 (91.0%)	148 (87.0%)	0.677
Coronary artery disease - no. (%)	368 (46.3%)	312 (49.9%)	56 (32.9%)	0.601
Prior myocardial infarction - no. (%)	98 (12.3%)	86 (13.8%)	12 (7.1%)	<b>0.030</b>
Prior stroke - no. (%)	63 (7.9%)	47 (7.5%)	16 (9.4%)	0.311
Peripheral artery disease - no. (%)	90 (11.3%)	79 (12.6%)	11 (6.5%)	<b>0.039</b>
COPD - no. (%)	289 (36.4%)	222 (35.5%)	67 (39.4%)	0.597
Atrial fibrillation - no. (%)	274 (34.5%)	207 (33.1%)	67 (39.4%)	0.199
Prior CABG - no. (%)	117 (14.7%)	103 (16.5%)	14 (8.2%)	<b>0.014</b>
Prior PCI - no. (%)	182 (22.9%)	145 (23.2%)	37 (21.8%)	0.952
Grip strength	18.0 (13.0;24.5)	19.0 (13.0;27.5)	16.3 (11.2;18.8)	0.056
Gait speed	7.0 (6.0;9.0)	6.0 (5.0;9.0)	7.5 (6.0;13.0)	0.063
Echocardiographic findings				
LV Ejection fraction < 55% - no. (%)	314 (39.5%)	261 (41.8%)	53 (31.2%)	<b>0.048</b>
Peak velocity baseline - m/s	4.2 (3.7;4.7)	4.2 (3.7;4.7)	4.3 (3.9;4.8)	<b>0.009</b>
Maximum gradient - mmHg	71 (56;88)	69 (55;87)	75 (60;93)	<b>0.009</b>
Mean gradient - mmHg	44 (35;56)	44 (34;54)	46 (35;60)	<b>0.025</b>
AVA - cm <sup>2</sup>	0.6 (0.5;0.8)	0.6 (0.5;0.8)	0.6 (0.5;0.8)	<b>0.086</b>
Systolic PAP > 60 mmHg – no. (%)	291 (36.6%)	201 (32.2%)	90 (52.9%)	<b>&lt;0.001</b>
MR ≥ 2 - no. (%)	89 (11.2%)	67 (10.7%)	22 (12.9%)	0.257

STS – Society of Thoracic Surgeons, eGFR – estimated Glomerular Filtration Rate, NYHA – New York Heart Association, COPD – Chronic Obstructive Pulmonary Disease, CABG – Coronary Artery Bypass Graft, PCI – Percutaneous Coronary Intervention, AVA – Aortic Valve Area, PAP – Pulmonary Artery Pressure, MR – Mitral Regurgitation. All values are given in median (Interquartile range) or number (%) unless otherwise stated.

Supplemental Table S3 – Baseline Characteristics of the Study Population, Postdilatation and No Postdilatation groups

CHARACTERISTICS	All patients n=795	Postdilatation n=98	No Postdilatation n=697	p
Age (years)	81.0 (77.0;85.0)	80.0 (77.0;84.0)	81.0 (77.0;85.0)	0.205
Male sex (%)	330 (41.5%)	54 (55.1%)	276 (39.6%)	<b>0.004</b>
Body mass index (kg/m <sup>2</sup> )	27.3 (24.1;30.9)	26.7 (23.3;29.5)	27.3 (24.2;31.1)	0.099
Logistic EuroSCORE	18.5 (12.8;29.0)	20.0 (14.0;33.2)	18.4 (12.6;28.5)	<b>0.034</b>
STS-Score Risk of mortality	8.1 (5.4;12.3)	9.4 (5.4;14.8)	7.9 (5.4;12.2)	0.102
eGFR (ml/min/1.73m <sup>2</sup> )	53 (39;69)	55 (40;71.0)	53 (39;69)	0.616
NYHA class - no. (%)				
II	124 (15.6%)	14 (14.3%)	110 (15.7%)	0.702
III	494 (62.1%)	59 (60.2%)	435 (62.4%)	0.673
IV	132 (16.6%)	17 (17.3%)	115 (16.5%)	0.833
Diabetes mellitus - no. (%)	345 (43.4%)	38 (38.8%)	307 (44.0%)	0.250
Hypertension - no. (%)	717 (90.2%)	88 (89.8%)	629 (90.2%)	0.468
Coronary artery disease - no. (%)	368 (46.3%)	50 (51.0%)	318 (45.6%)	0.282
Prior myocardial infarction - no. (%)	98 (12.3%)	17 (17.3%)	81 (11.6%)	0.127
Prior stroke - no. (%)	63 (7.9%)	10 (10.2%)	53 (7.6%)	0.404
Peripheral artery disease - no. (%)	90 (11.3%)	11 (11.2%)	79 (11.3%)	0.925
COPD - no. (%)	289 (36.4%)	43 (43.9%)	246 (35.3%)	0.058
Atrial fibrillation - no. (%)	274 (34.5%)	35 (35.7%)	239 (34.3%)	0.845
Prior CABG - no. (%)	117 (14.7%)	22 (22.4%)	95 (13.6%)	<b>0.026</b>
Prior PCI - no. (%)	182 (22.9%)	25 (25.5%)	157 (22.5%)	0.581
Grip strength	18.0 (13.0;24.5)	13.0 (10.0;23.0)	18.3 (13.5;25.0)	0.061
Gait speed	7.0 (6.0;9.0)	7.0 (5.0;9.0)	7.0 (6.0;9.3)	0.667
Echocardiographic findings				
LV Ejection fraction < 55% - no. (%)	314 (39.5%)	47 (48.0%)	267 (38.3%)	0.072
Peak velocity baseline - m/s	4.2 (3.7;4.7)	4.2 (3.6;4.8)	4.2 (3.7;4.7)	0.617
Maximum gradient - mmHg	71 (56;88)	69 (53;93)	71 (56;87)	0.617
Mean gradient - mmHg	44 (35;56)	42 (32;61)	44 (35;55)	0.351
AVA - cm <sup>2</sup>	0.6 (0.5;0.8)	0.6 (0.5;0.8)	0.6 (0.5;0.8)	0.234
Systolic PAP > 60 mmHg – no. (%)	291 (36.6%)	39 (39.8%)	252 (36.2%)	0.549
MR ≥ 2 - no. (%)	89 (11.2%)	11 (11.2%)	78 (11.2%)	0.938

STS – Society of Thoracic Surgeons, eGFR – estimated Glomerular Filtration Rate, NYHA – New York Heart Association, COPD – Chronic Obstructive Pulmonary Disease, CABG – Coronary Artery Bypass Graft, PCI – Percutaneous Coronary Intervention, AVA – Aortic Valve Area, PAP – Pulmonary Artery Pressure, MR – Mitral Regurgitation. All values are given in median (Interquartile range) or number (%) unless otherwise stated.

Supplemental Table S4 – Procedural Characteristics of the Study Population, Self-expandable and Balloon- expandable valves

CHARACTERISTICS	All patients n=795	Self-expandable n=625	Balloon-Expandable n=170	p
Time of procedure - min	44.0 (35.0;60.0)	44.0 (35.0;60.0)	43.0 (36.5;51.0)	0.337
Amount of CM for procedure - ml	125 (105;150)	125 (105;151)	125 (105;151)	0.457
Postdilatation	98 (12.3%)	88 (14.8%)	10 (5.9%)	<b>0.004</b>
Device success	732 (92.1%)	573 (91.7%)	159 (93.5%)	0.429
Concomitant PCI	2 (0.3%)	2 (0.3%)	0 (0%)	0.538
Post-procedural variables				
Myocardial infarction - no. (%)	7 (0.9%)	5 (0.8%)	2 (1.2%)	0.358
Stroke - no. (%)	42 (5.3%)	32 (5.1%)	10 (5.9%)	0.150
Death within 24 hours - no. (%)	11 (1.4%)	9 (1.4%)	2 (1.2%)	0.874
New pacemaker implantation	165 (20.7%)	145 (23.2%)	20 (11.6%)	<b>0.003</b>
Life Threatening or major bleeding	255 (32.1%)	211 (33.8%)	44 (25.9%)	0.473
Cardiac tamponade	31 (3.9%)	25 (4.0%)	6 (3.5%)	0.862
AKI (any stage)	156 (19.6%)	112 (17.9%)	44 (25.9%)	<b>&lt;0.001</b>
AKI stage I - no. (%)	77 (9.7%)	58 (9.3%)	19 (11.2%)	0.074
AKI stage II - no. (%)	18 (2.3%)	16 (2.6%)	2 (1.2%)	0.478
AKI stage III - no. (%)	61 (7.7%)	41 (6.6%)	23 (13.5%)	<b>&lt;0.001</b>
Need for haemodialysis - no. (%)	63 (7.9%)	41 (6.6%)	22 (12.9%)	<b>0.006</b>
Hospitalization length - days	20 (15;27)	20 (15;28)	21 (15;25)	0.497

CM – Contrast Medium, PCI – Percutaneous Coronary Intervention,

Supplemental Table S5 – Procedural Characteristics of the Study Population, Postdilatation and No Postdilatation groups

CHARACTERISTICS	All patients n=795	Postdilatation n=98	No Postdilatation n=697	p
Time of procedure - min	44.0 (35.0;60.0)	47.0 (38.5;66.0)	43.0 (35.0;60.0)	<b>0.011</b>
Amount of CM for procedure - ml	125 (105;150)	140 (115;190)	125 (105;150)	<b>&lt;0.001</b>
Self-expandable valve no. (%)	625 (78.6%)	88 (89.8%)	537 (77.0%)	<b>0.004</b>
Balloon-expandable valve no. (%)	170 (21.4%)	10 (10.2%)	160 (23.0%)	<b>0.004</b>
Device success	732 (92.1%)	77 (78.6%)	655 (94.0%)	<b>&lt;0.001</b>
Concomitant PCI	2 (0.3%)	0 (0.0%)	2 (0.3%)	0.596
Post-procedural variables				
Myocardial infarction - no. (%)	7 (0.9%)	1 (1.0%)	6 (0.9%)	0.871
Stroke - no. (%)	42 (5.3%)	10 (10.2%)	32 (4.6%)	<b>0.019</b>
Death within 24 hours - no. (%)	11 (1.4%)	1 (1.0%)	10 (1.4%)	0.875
New pacemaker implantation - no. (%)	165 (20.7%)	21 (21.4%)	144 (20.7%)	0.932
Life Threatening or major bleeding - no. (%)	255 (32.1%)	32 (32.7%)	223 (32.0%)	0.872
Cardiac tamponade - no. (%)	31 (3.9%)	3 (3.1%)	28 (4.0%)	0.615
AKI (any stage)	156 (19.6%)	25 (25.5%)	131 (18.8%)	0.115
AKI stage I - no. (%)	77 (9.7%)	10 (10.2%)	67 (9.6%)	0.854
AKI stage II - no. (%)	18 (2.3%)	2 (2.0%)	16 (2.3%)	0.873
AKI stage III - no. (%)	61 (7.7%)	15 (15.3%)	48 (6.9%)	<b>0.026</b>
Need for haemodialysis - no. (%)	63 (7.9%)	15 (15.3%)	48 (6.9%)	<b>0.006</b>
Hospitalization length - days	20 (15;27)	21 (15;26)	20 (15;27)	0.614

CM – Contrast Medium, PCI – Percutaneous Coronary Intervention,



Supplemental Table S6 – Predictors of mortality at 8 years for subgroups adjusted for differences in baseline and procedural characteristic using Cox regression analysis

Parameter	Self-expandable n=625	Balloon-Expandable n=170	Univariate p	Multivariate	
				HR (95%CI)	p
Age (years)	81.0 (77.0;85.0)	82.0 (78.0;85.0)	<b>0.041</b>	1.02 (1.00-1.03)	0.070
Male sex (%)	300 (48.0%)	30 (17.6%)	<b>&lt;0.001</b>	1.00 (0.82-1.23)	0.980
Prior MI - no. (%)	86 (13.8%)	12 (7.1%)	<b>0.030</b>	1.13 (0.85-1.51)	0.389
PAD - no. (%)	79 (12.6%)	11 (6.5%)	<b>0.039</b>	<b>1.95 (1.49-2.56)</b>	<b>&lt;0.001</b>
Prior CABG - no. (%)	103 (16.5%)	14 (8.2%)	<b>0.014</b>	1.33 (0.99-1.78)	0.055
LVEF < 55 % - no. (%)	261 (41.8%)	53 (31.2%)	<b>0.048</b>	<b>1.27 (1.05-1.53)</b>	<b>0.014</b>
Vmax - m/s	4.2 (3.7;4.7)	4.3 (3.9;4.8)	<b>0.009</b>	0.82 (0.72-0.94)	<b>0.004</b>
Systolic PAP > 60 mmHg - no. (%)	201 (32.2%)	90 (52.9%)	<b>&lt;0.001</b>	1.23 (1.02-1.49)	<b>0.035</b>
Postdilatation	88 (14.8%)	10 (5.9%)	<b>0.004</b>	0.99 (0.75-1.31)	0.940
AKI stage III - no. (%)	38 (6.1%)	23 (13.5%)	<b>&lt;0.001</b>	4.12 (3.01-5.64)	<b>&lt;0.001</b>
New PM	145 (23.2%)	20 (11.6%)	<b>0.003</b>	1.04 (0.86-1.26)	0.705

Parameter	Postdilatation n=98	No Postdilatation n=697	Univariate p	Multivariate	
				HR (95%CI)	p
Male sex (%)	54 (55.1%)	276 (39.6%)	<b>0.004</b>	0.91 (0.73-1.14)	0.416
Logistic EuroSCORE	20.0 (14.0;33.2)	18.4 (12.6;28.5)	<b>0.034</b>	<b>1.01 (1.00-1.02)</b>	<b>0.008</b>
Prior CABG - no. (%)	22 (22.4%)	95 (13.6%)	<b>0.026</b>	<b>1.43 (1.02-2.02)</b>	<b>0.040</b>
LVEF < 55% - no. (%)	47 (48.0%)	267 (38.3%)	<b>0.072</b>	0.84 (0.68-1.04)	0.116
COPD - no. (%)	43 (43.9%)	246 (35.3%)	0.058	1.25 (1.02-1.54)	0.032
Time of procedure - min	47.0 (38.5;66.0)	43.0 (35.0;60.0)	<b>0.011</b>	1.00 (1.00-1.00)	0.394
CM for procedure - ml	140 (115;190)	125 (105;150)	<b>&lt;0.001</b>	1.00 (1.00-1.00)	0.159
SE valve no. (%)	88 (89.8%)	537 (77.0%)	<b>0.004</b>	1.06 (0.80-1.40)	0.689
Device success	77 (78.6%)	655 (94.0%)	<b>&lt;0.001</b>	1.08 (0.70-1.68)	0.719
Stroke - no. (%)	10 (10.2%)	32 (4.6%)	<b>0.019</b>	<b>1.67 (1.13-2.46)</b>	<b>0.010</b>
AKI stage III - no. (%)	15 (15.3%)	48 (6.9%)	<b>0.006</b>	<b>2.71 (1.88-3.91)</b>	<b>&lt;0.001</b>

MI – Myocardial Infarction, CABG – Coronary Artery Bypass Graft, LVEF – Left Ventricular Ejection Fraction, PAD – Peripheral Artery Disease, PM – Pacemaker, CM – Contrast Medium, SE valve – Self-Expandable valve

Supplemental Table S7 - Echocardiographic data (Self-expandable vs. Balloon-expandable)

	Self-expandable	Balloon-Expandable	p
Discharge	n=579	n=135	
AVA (cm <sup>2</sup> )	1.8 (1.6;2.2)	1.9 (1.7;2.1)	0.760
vmax (m/s)	2.0 (1.7;2.3)	2.1 (1.8;2.4)	<b>0.008</b>
pmax (mmHg)	16.0 (12.0;21.0)	17.0 (13.0;23.0)	<b>0.008</b>
pmean (mmHg)	9.0 (6.0;11.2)	9.0 (7.0;13.0)	0.061
EF (%)	60 (51;66)	63 (56;68)	<b>0.002</b>
AR ≥ 2 - no. (%)	55 (9.5%)	6 (4.4%)	0.077
1 year	n=323	n=79	
AVA (cm <sup>2</sup> )	1.8 (1.6;2.2)	1.7 (1.5;2.0)	<b>0.020</b>
vmax (m/s)	1.9 (1.6;2.2)	2.1 (1.8;2.4)	<b>0.039</b>
pmax (mmHg)	15.0 (10.0;20.0)	18.0 (13.0;24.8)	<b>&lt;0.001</b>
pmean (mmHg)	8.0 (5.0;10.8)	9.0 (6.0;13.0)	<b>0.006</b>
EF (%)	60 (53;65)	62 (56;67)	<b>0.034</b>
AR ≥ 2 - no. (%)	24 (7.4%)	1 (0.7%)	<b>0.045</b>
3 years	n=107	n=16	
AVA (cm <sup>2</sup> )	1.8 (1.5;2.2)	1.7 (1.1;2.0)	0.178
vmax (m/s)	1.8 (1.5;2.3)	2.3 (1.9;2.5)	<b>0.047</b>
pmax (mmHg)	14.0 (9.5;21.0)	19.0 (13.5;22.8)	<b>0.024</b>
pmean (mmHg)	7.9 (5.4;12.0)	9.5 (8.0;12.0)	0.060
EF (%)	58 (50;65)	61 (57;66)	0.197
AR ≥ 2 - no. (%)	7 (6.5%)	0 (0.0%)	0.319
5 years	n=72	n=14	
AVA (cm <sup>2</sup> )	1.8 (1.5;2.1)	1.3 (1.2;1.6)	<b>0.016</b>
vmax (m/s)	1.7 (1.4;2.1)	2.2 (2.0;2.9)	<b>0.003</b>
pmax (mmHg)	14.0 (8.5;19.0)	19.0 (18.0;39.3)	<b>0.001</b>
pmean (mmHg)	7.0 (5.0;10.0)	11.0 (9.0;20.3)	<b>0.001</b>
EF (%)	58 (50;62)	56 (50;64)	0.981
AR ≥ 2 - no. (%)	4 (5.6%)	0 (0.0%)	0.387
7 years	n=21	n=4	
AVA (cm <sup>2</sup> )	1.9 (1.0;2.5)	2.4 (1.7;*)	0.456
vmax (m/s)	2.2 (1.8;2.4)	2.3 (2.0;2.7)	0.442
pmax (mmHg)	15.0 (8.0;22.0)	17.8 (12.1;22.3)	0.538
pmean (mmHg)	8.5 (5.0;14.5)	9.0 (5.5;11.0)	0.871
EF (%)	54 (44;64)	58 (48;69)	0.452

AR $\geq$ 2 - no. (%)	2 (9.5%)	1 (25%)	0.408
$\geq$ 7 years	n=28	n=4	
AVA (cm <sup>2</sup> )	2.0 (1.3;2.6)	2.4 (1.7;*)	0.704
vmax (m/s)	2.1 (1.4;2.4)	2.3 (2.0;2.7)	0.237
pmax (mmHg)	13.0 (8.0;20.0)	17.8 (12.1;22.3)	0.237
pmean (mmHg)	7.8 (4.4;10.5)	9.0 (5.5;11.0)	0.728
EF (%)	55 (45;64)	58 (48;69)	0.527
AR $\geq$ 2 - no. (%)	2 (7.1%)	1 (25%)	0.267

AVA – Aortic Valve Area, vmax – maximum velocity, pmax – maximum pressure gradient, pmean – mean pressure gradient, EF – Ejection Fraction, AR – Aortic regurgitation, MR – Mitral Regurgitation

Supplemental Table S8 - Echocardiographic data (Postdilatation vs. no Postdilatation)

	No Postdilatation	Postdilatation	p
Discharge	n=628	n=85	
AVA (cm <sup>2</sup> )	1.8 (1.6;2.2)	2.0 (1.7;2.3)	0.159
vmax (m/s)	2.0 (1.7;2.3)	1.9 (1.7;2.3)	0.389
pmax (mmHg)	16.0 (12.0;21.0)	15.0 (11.0;21.3)	0.389
pmean (mmHg)	9.0 (6.9;12.0)	8.0 (6.0;11.0)	0.357
EF (%)	60 (53;66)	59 (46;65)	<b>0.030</b>
AR ≥ 2 - no. (%)	45 (7.1%)	16 (18.8%)	<b>&lt;0.001</b>
1 year	n=357	n=45	
AVA (cm <sup>2</sup> )	1.8 (1.6;2.1)	1.9 (1.6;2.2)	0.342
vmax (m/s)	1.9 (1.6;2.2)	1.9 (1.5;2.2)	0.660
pmax (mmHg)	15.0 (11.0;21.0)	14.0 (9.5;18.0)	0.175
pmean (mmHg)	8.0 (6.0;11.0)	7.0 (5.0;9.0)	0.054
EF (%)	60 (54;65)	60 (50;66)	0.659
AR ≥ 2 - no. (%)	19 (5.3%)	6 (13.3%)	0.030
3 years	n=103	n=21	
AVA (cm <sup>2</sup> )	1.8 (1.5;2.1)	1.7 (1.4;2.7)	0.837
vmax (m/s)	1.8 (1.6;2.3)	2.1 (1.8;2.3)	0.395
pmax (mmHg)	14.0 (10.5;21.5)	17.0 (13.0;22.5)	0.562
pmean (mmHg)	8.0 (6.0;11.9)	9.5 (5.5;12.0)	0.861
EF (%)	60 (50;65)	55 (47;61)	0.058
AR ≥ 2 - no. (%)	5 (4.9%)	2 (9.5%)	0.378
5 years	n=72	n=14	
AVA (cm <sup>2</sup> )	1.6 (1.4;2.0)	1.8 (1.6;1.9)	0.511
vmax (m/s)	1.9 (1.4;2.2)	1.9 (1.3;2.2)	0.858
pmax (mmHg)	15.0 (9.0;19.0)	17.8 (9.1;23.3)	0.442
pmean (mmHg)	8.0 (5.0;11.0)	9.0 (4.0;12.3)	0.697
EF (%)	58 (50;62)	55 (49;60)	0.412
AR ≥ 2 - no. (%)	2 (2.8 %)	2 (14.3%)	0.061
7 years	n=25	n=0	
AVA (cm <sup>2</sup> )	2.0 (1.0;2.5)	n.a.	n.a.
vmax (m/s)	2.2 (1.9;2.5)	n.a.	n.a.
pmax (mmHg)	15.3 (8.3;22.0)	n.a.	n.a.
pmean (mmHg)	8.5 (5.3;12.0)	n.a.	n.a.

EF (%)	55 (46;64)	n.a.	n.a.
AR $\geq$ 2 - no. (%)	3 (9.7%)	n.a.	n.a.
$\geq$ 7 years	n=32	n=0	
AVA (cm <sup>2</sup> )	2.1 (1.5;2.6)	n.a.	n.a.
vmax (m/s)	2.2 (1.6;2.4)	n.a.	n.a.
pmax (mmHg)	14.0 (8.0;20.0)	n.a.	n.a.
pmean (mmHg)	7.5 (5.0;11.0)	n.a.	n.a.
EF (%)	55 (45;64)	n.a.	n.a.
AR $\geq$ 2 - no. (%)	3 (9.4%)	n.a.	n.a.

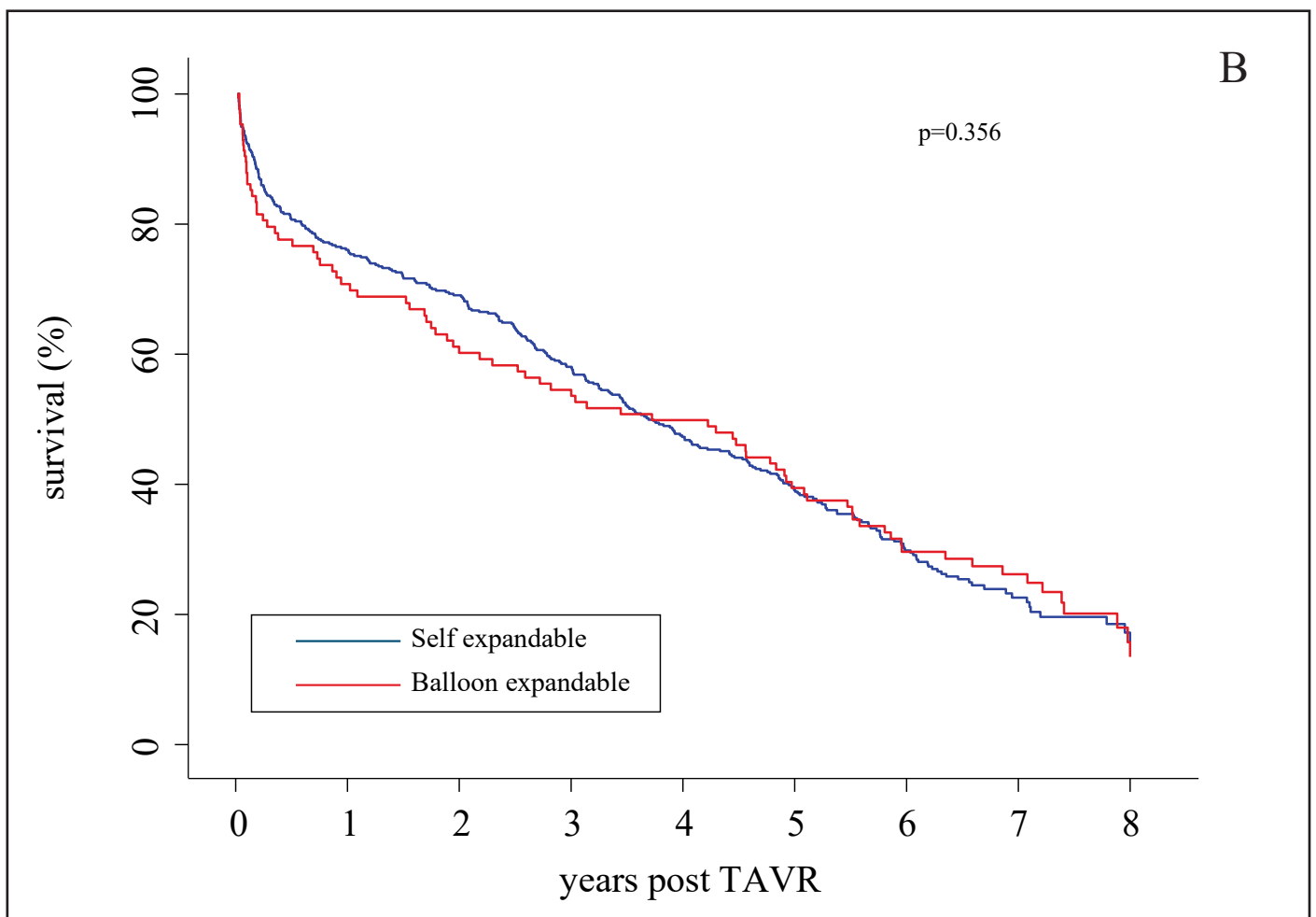
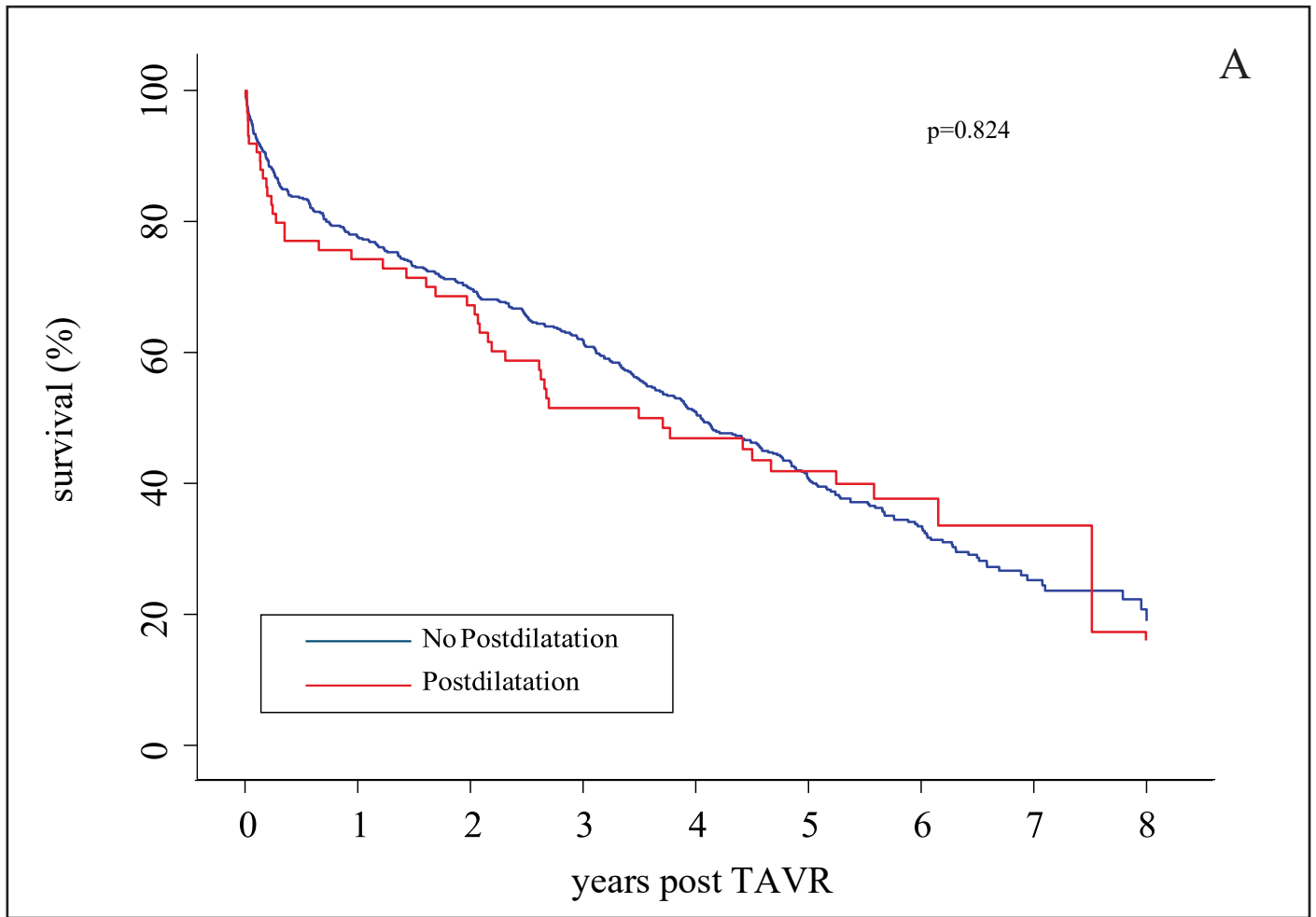
AVA – Aortic Valve Area, vmax – maximum velocity, pmax – maximum pressure gradient, pmean – mean pressure gradient, EF – Ejection Fraction, AR – Aortic regurgitation, MR – Mitral Regurgitation

Supplemental Table S9 – Number of patients with structural valve deterioration (SVD) in subgroups

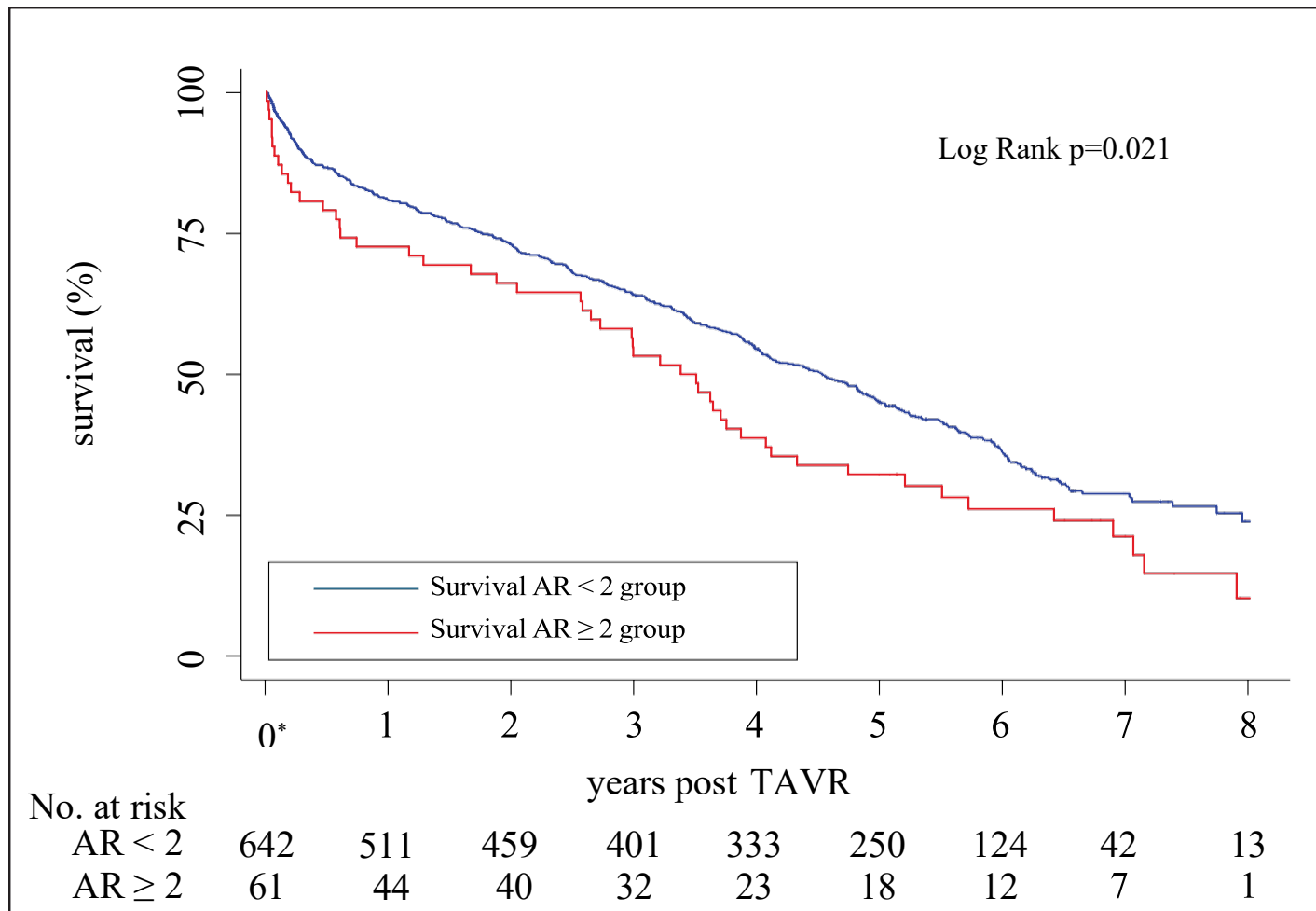
	Moderate SVD n=20	Severe SVD n=6	P
Postdilatation – n (% of all patients with PD)	3 (3.1%)	1 (1.0%)	0.751
No postdilatation – n (% of all patients without PD)	17 (2.4%)	5 (0.7%)	
SE valves - n (% of all patients with SE valves)	13 (2.1%)	4 (0.6%)	0.130
BE valves - n (% of all patients with BE valves)	7 (4.1%)	2 (1.2%)	

SE valves – Self-Expandable valves, BE valves – Balloon-Expandable valves

Supplemental Figure S1 - Survival of subgroups adjusted for differences in baseline and procedural characteristics using Cox regression analysis



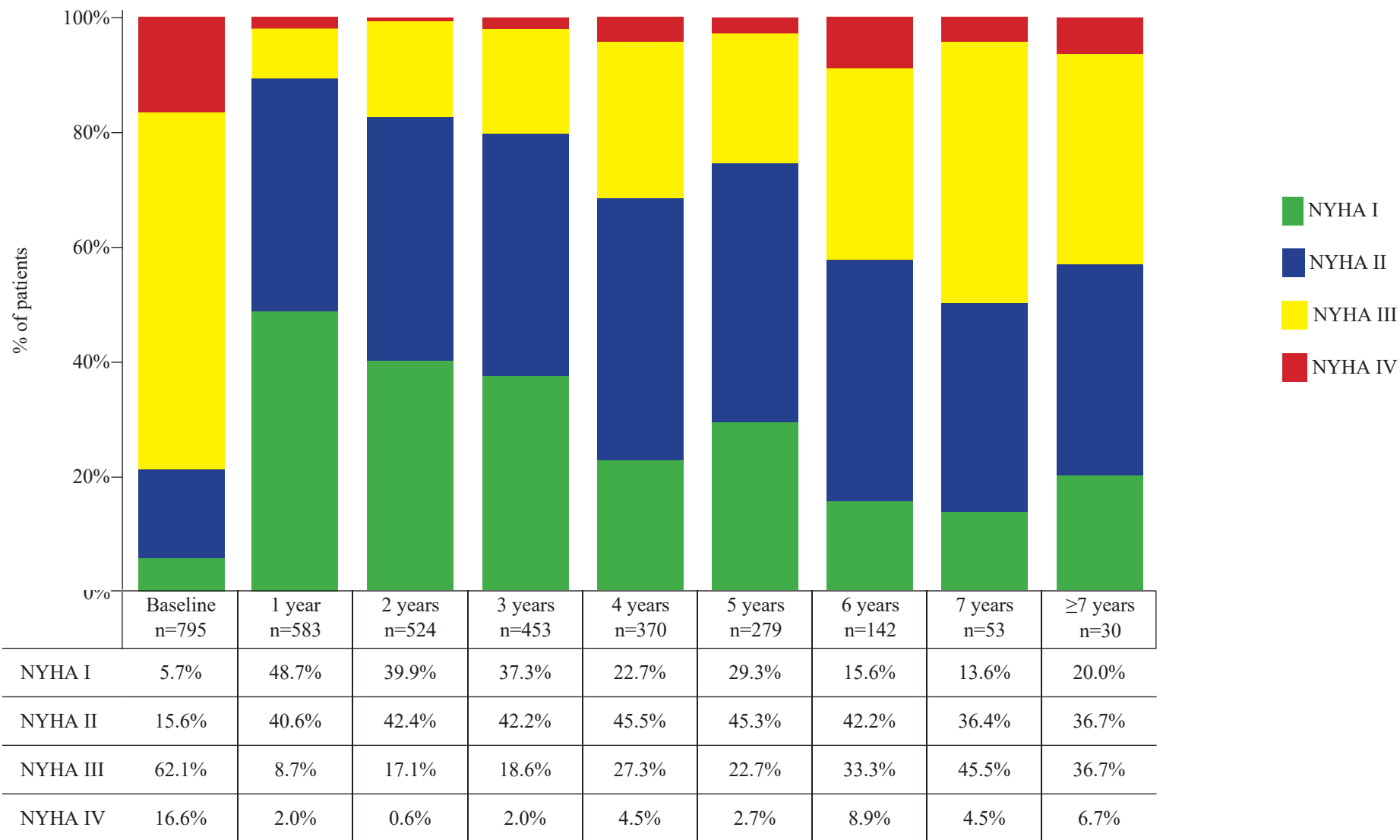
Supplementary Figure S2 - Kaplan-Meier survival estimates for AR  $\geq 2$  and AR  $< 2$  groups



\* Echocardiographic data for AR after TAVR and before discharge was available for 703 patients.



Supplemental Figure S3



NYHA = New York Heart Association class;