

Supplementary Figure 1

Figure Legend: Serosanguinous fluid oozing out on opening of carcass during Post Mortem



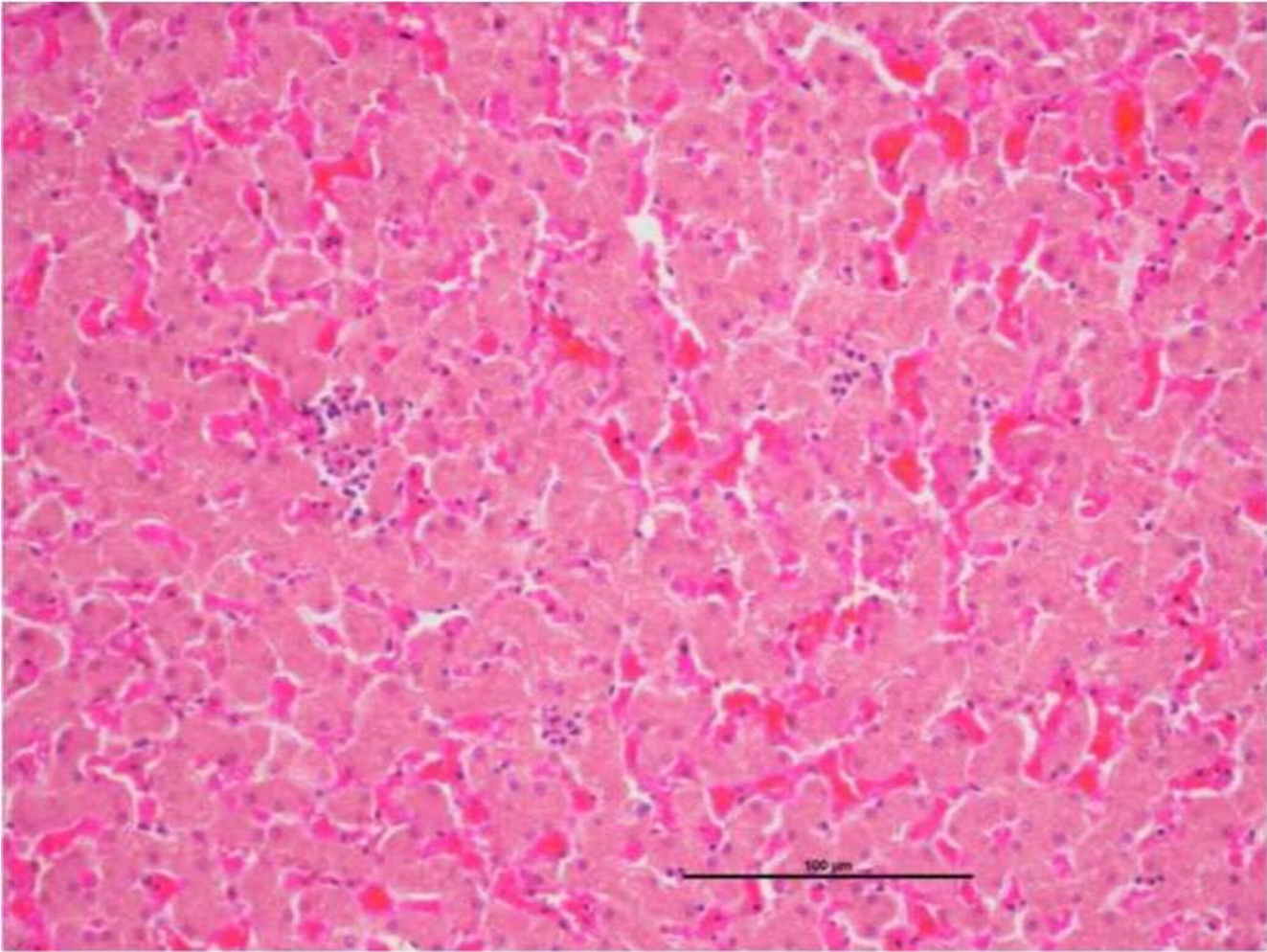
Supplementary Figure 2

Figure Legend: Highly congested and haemorrhagic soft and friable liver with distended gall bladder



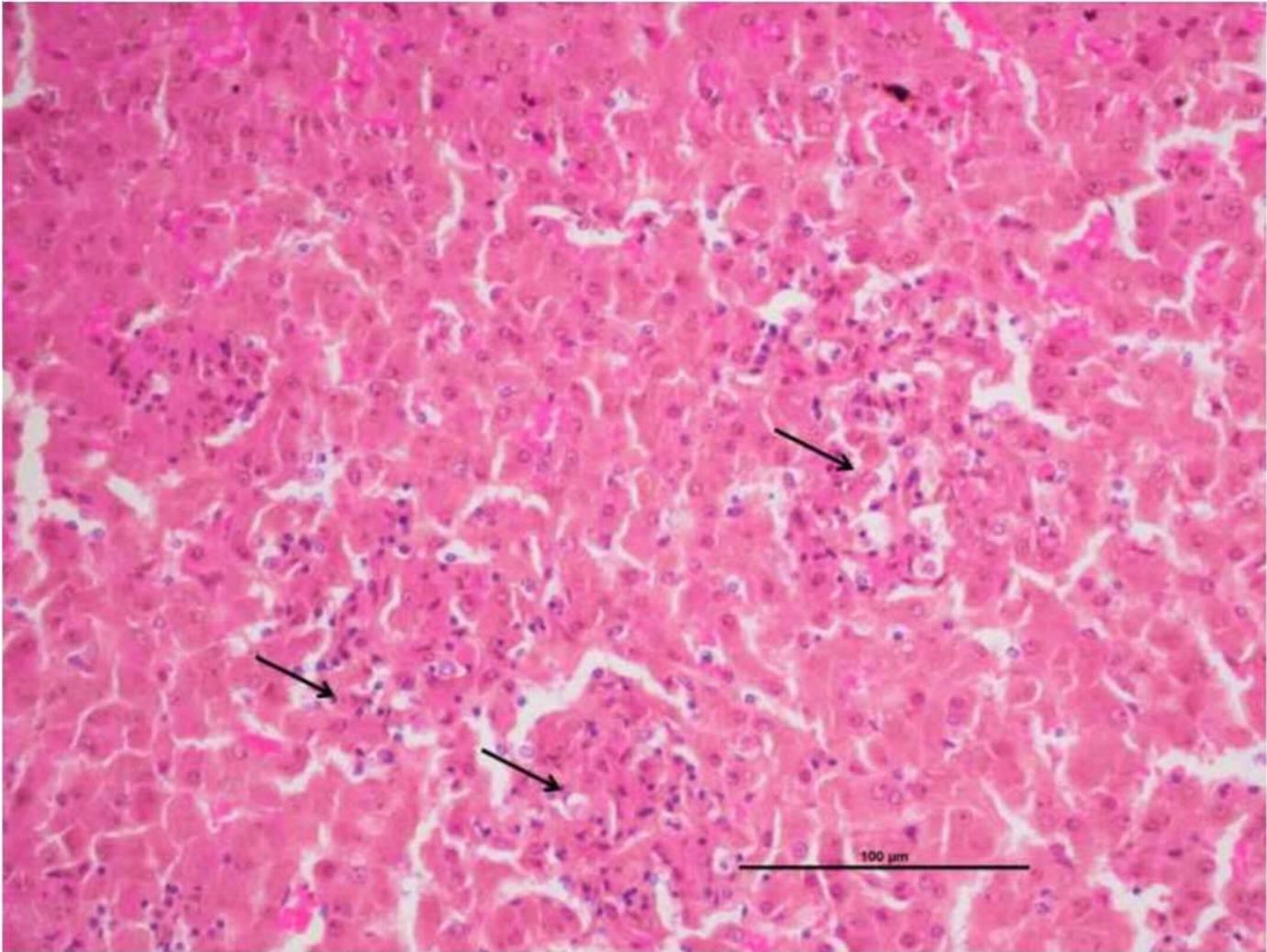
Supplementary Figure 3

Figure Legend: Histopathology of liver section showing severe hepatic degeneration



Supplementary Figure 4

Figure Legend: Multifocal areas of hepatic necrosis in the liver surrounded by inflammatory cells in liver parenchyma



Supplementary Figure 5

Figure Legend: Severe lymphoplasmacytic and neutrophilic tubulointerstitial nephritis

