

Supplementary Fig. 1

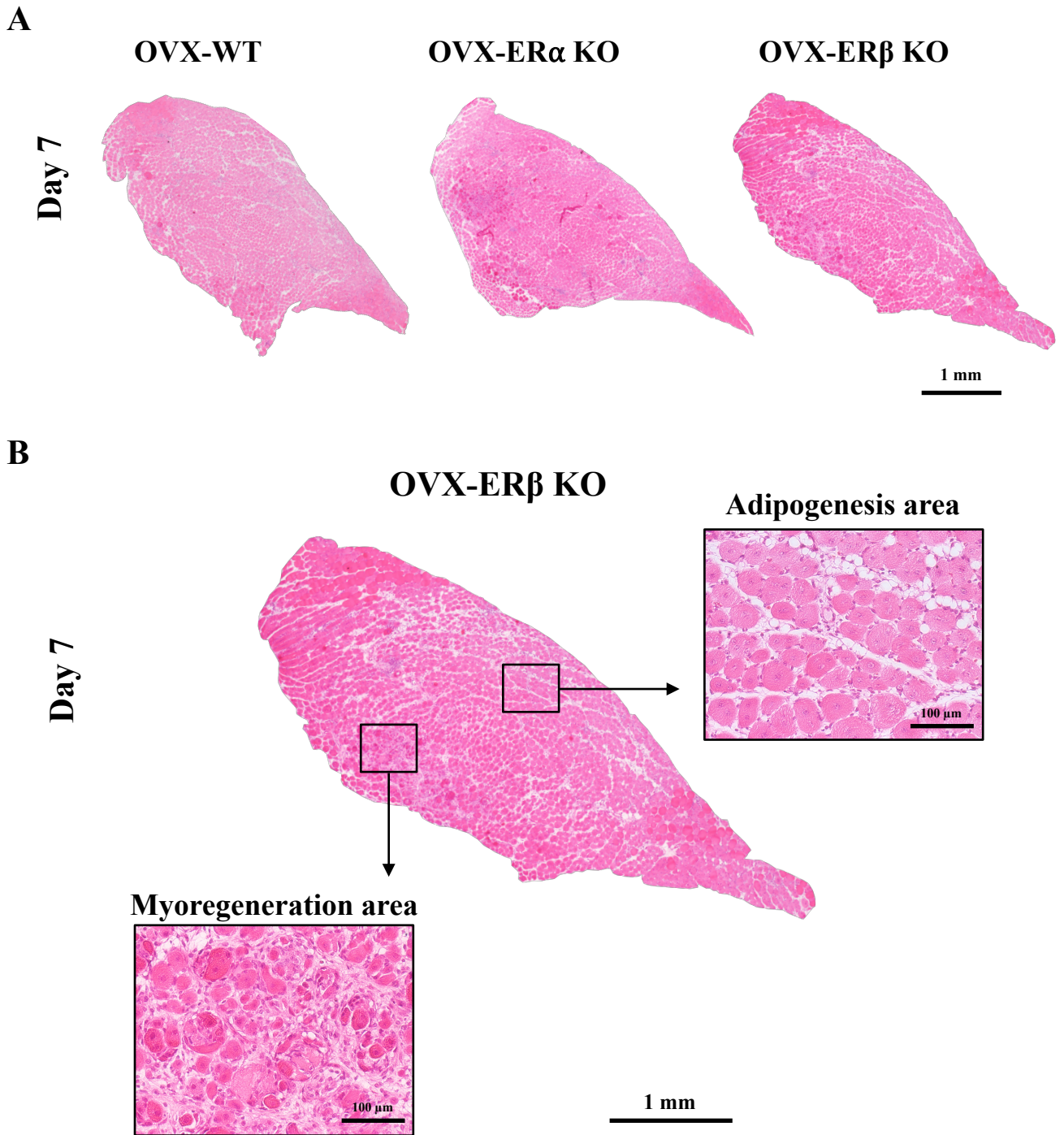


Fig. S1. Transverse sections of tibialis anterior (TA) muscle. (A) Sections of TA muscle injected with cardiotoxin (CTX) in ovariectomy treated wild-type (OVX-WT) mice as control, OVX-estrogen receptor (ER) α knockout (KO) and OVX-ER β KO at day 7 post CTX injection. (B) Myoregeneration and adipogenesis area of TA muscle section in OVX-ER β KO mice at day 7 post CTX injection.