

Figure S1. Adjusted Survival Curve for CKD Incidence, Progression, KFRT, or Death for Patients with Measured (non-imputed) Baseline Serum Creatinine Data

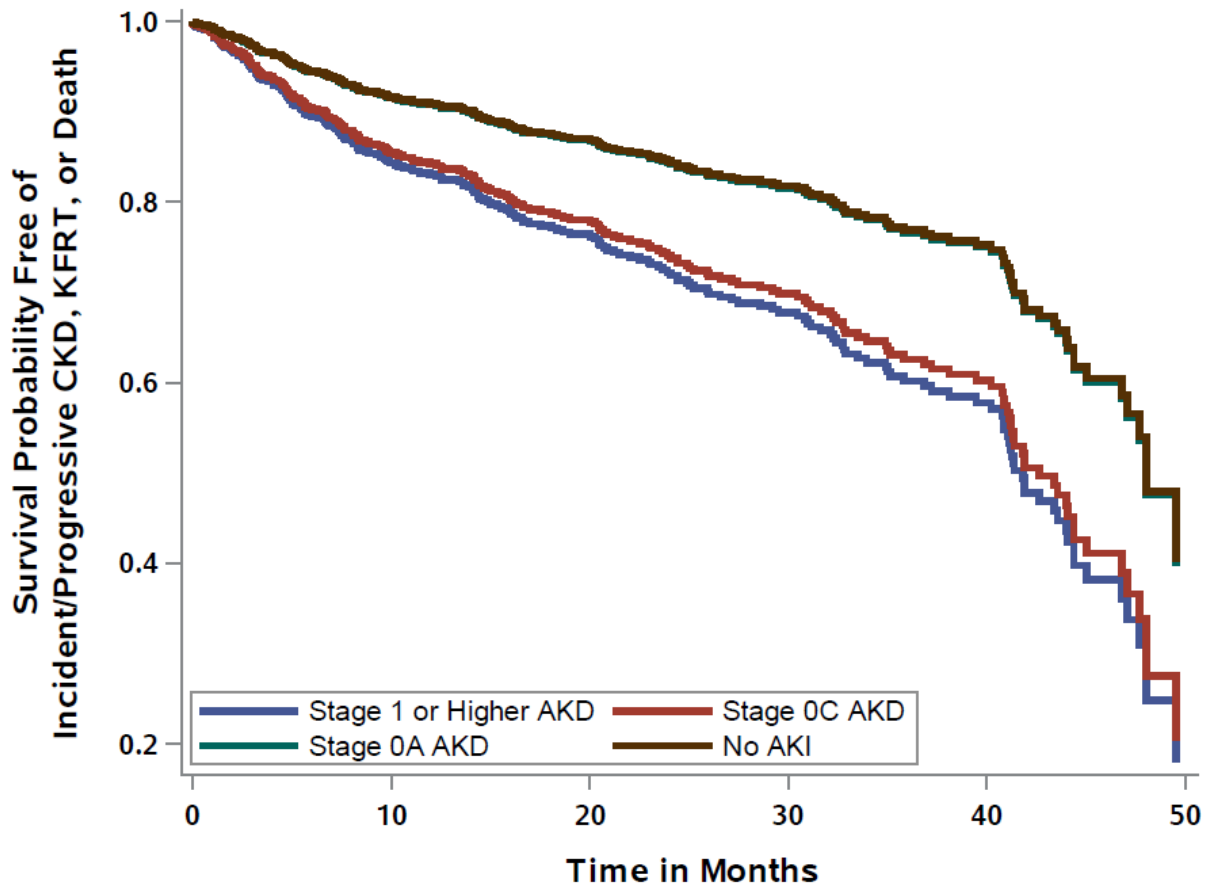


Figure S2. Adjusted Survival Curve for CKD Incidence, KFRT, or Death for Patients Without Baseline CKD

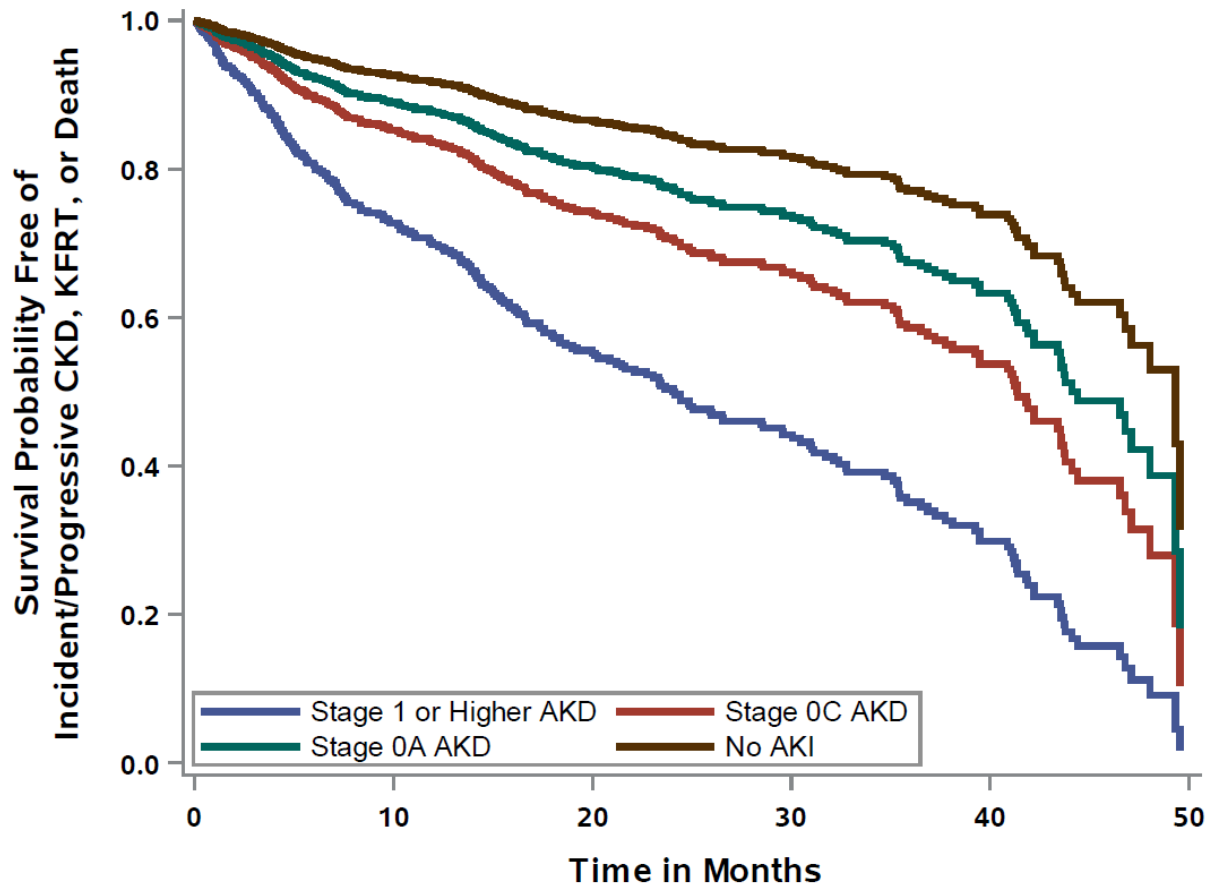


Figure S3. Adjusted Survival Curve for CKD Progression, KFRT, or Death for Patients With Baseline CKD

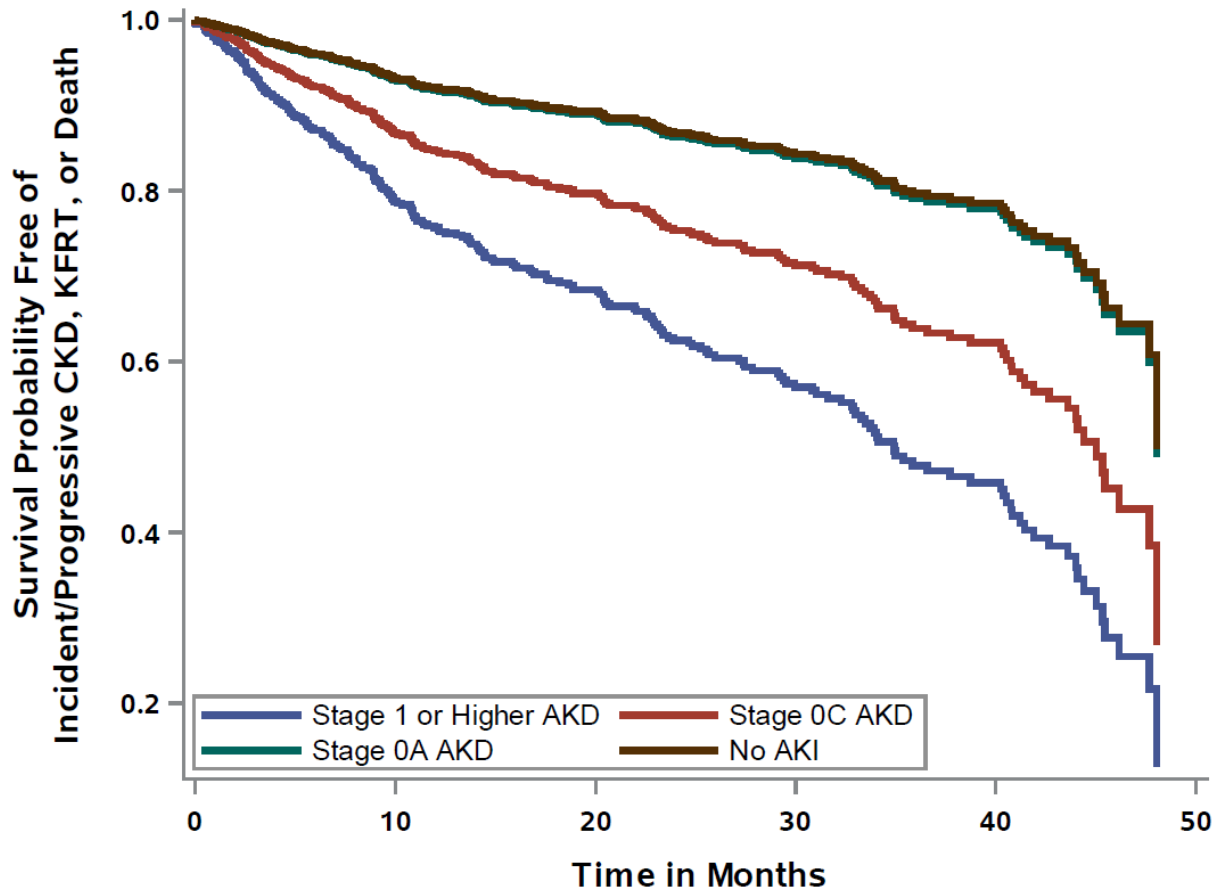


Table S1. Multiple Imputation Table

	n	Mean	SD	Min	Max	Median	25 th %	75 th %
<u>Partial Cohort</u> (Measured Baseline Serum Creatinine Available)	1177	1.29	0.60	0.20	4.70	1.20	0.90	1.50
<u>Entire Cohort</u> (Multiple Imputation for Missing Baseline Serum Creatinine)	2307	1.33	0.51	0.20	4.70	1.29	1.00	1.57

Table S2. Timing of Serum Creatinine Values Used for AKD Staging in Patients Surviving AKI

Entire Cohort with Multiple Imputation for Missing Baseline Serum Creatinine (n=1231)	Stage \geq 1 AKD (n =251)	Stage 0C AKD (n =326)	Stage 0A AKD (n =654)
Last SCr during hospitalization, n (%)	236 (94.02)	305 (93.56)	604 (92.35)
SCr within 90 days after discharge, n (%)	15 (5.98)	21 (6.44)	50 (7.65)
Partial Cohort with Measured Data for Baseline Serum Creatinine (n=623)	Stage \geq 1 AKD (n =96)	Stage 0C AKD (n =168)	Stage 0A AKD (n =359)
Last SCr during hospitalization, n (%)	90 (93.75)	157 (93.45)	339 (94.43)
SCr within 90 days after discharge, n (%)	6 (6.25)	11 (6.55)	20 (5.57)

Table S3. Serum Creatinine Measurements Used for CKD Adjudication

Entire Cohort with Multiple Imputation for Missing Baseline Serum Creatinine (n=2307)	Stage \geq 1 AKD (n =251)	Stage 0C AKD (n =326)	Stage 0A AKD (n =654)	No AKI (n =1076)
Only one SCr measure available in the follow-up period for CKD outcome adjudication, n (%)	15 (5.98%)	21 (6.44%)	50 (7.65%)	83 (7.71%)
At least two SCr measures available in the follow-up period for CKD outcome adjudication, n (%)	236 (94.02%)	305 (93.56%)	604 (92.35%)	993 (92.29%)
Partial Cohort with Measured Data for Baseline Serum Creatinine (n=1177)	Stage \geq 1 AKD (n =96)	Stage 0C AKD (n =168)	Stage 0A AKD (n =359)	No AKI (n =554)
At least one SCr measure available in the follow-up period for CKD outcome adjudication, n (%)	6 (6.25%)	11 (6.55%)	20 (5.57%)	41 (7.40%)
At least two SCr measures available in the follow-up period for CKD outcome adjudication, n (%)	90 (93.75%)	157 (93.45%)	339 (94.43%)	513 (92.60%)

Table S4. Study Outcomes by Stage of AKD for Patients Surviving AKI and for Patients Without AKI

Entire Cohort with Multiple Imputation for Missing Baseline Serum Creatinine (n=2307)	Stage ≥1 AKD (n =251)	Stage 0C AKD (n =326)	Stage 0A AKD (n =654)	No AKI (n =1076)
Incident CKD, n (%) ^a	71 (28.3)	60 (18.4)	50 (7.7)	51 (4.7)
Progressive CKD, n (%) ^a	65 (25.9)	35 (10.7)	37 (5.7)	28 (2.6)
Doubling of SCr, n (%) ^a	23 (9.2)	17 (5.2)	23 (3.5)	23 (2.1)
Dialysis, n (%) ^a	57 (22.7)	17 (5.2)	23 (3.5)	28 (2.6)
Death, n (%)	23 (9.2)	26 (8.0)	55 (8.4)	87 (8.1)
Partial Cohort with Measured Data for Baseline Serum Creatinine (n=1177)	Stage ≥1 AKD (n =96)	Stage 0C AKD (n =168)	Stage 0A AKD (n =359)	No AKI (n =554)
Incident CKD, n (%) ^a	29 (30.2)	32 (19.1)	33 (9.2)	35 (6.3)
Progressive CKD, n (%) ^a	7 (7.3)	14 (8.3)	12 (3.3)	16 (2.9)
Doubling of SCr, n (%) ^a	21 (21.9)	15 (8.9)	17 (4.7)	20 (3.6)
Dialysis, n (%)	8 (8.3)	7 (4.2)	13 (3.6)	15 (2.7)
Death, n (%)	8 (8.3)	11 (6.6)	28 (7.8)	39 (7.0)

CKD = chronic kidney disease; SCr = serum creatinine

^ap<0.05 for comparison across all 4 groups

Table S5. Cox Proportional-Hazards Model for Incident or Progressive CKD, KFRT, or Death by Baseline CKD Status

Complete Cohort (n=1231)	Adjusted HR ^a	95% CI	Adjusted HR ^b	95% CI
A. No CKD at Baseline: Incident CKD/KFRT/death (n=607)				
AKD Stage at Hospital Discharge or Within 90 Days				
Stage 0C vs 0A AKD	1.43	0.97-2.12	1.36	0.93-2.00
Stage ≥1 vs 0A AKD	2.82	1.89-4.21	2.72	1.90-3.91
Stage ≥1 vs 0C AKD	1.97	1.32-2.94	2.00	1.38-2.89
Age, 10-year	1.10	0.98-1.22	1.11	1.00-1.23
Man vs woman	0.93	0.68-1.27	--	--
Black vs other	1.09	0.81-1.48	--	--
Anemia	1.75	1.10-2.78	1.64	1.04-2.59
Diabetes	0.72	0.48-1.07	--	--
Log-transformed baseline eGFR	0.72	0.41-1.26	--	--
AKI Severity				
AKI severity KDIGO 2-3 vs 1	0.94	0.67-1.32	--	--
AKI severity KDIGO 3D vs 1	1.10	0.66-1.85	--	--
SOFA score ≥4 vs <4	1.68	1.22-2.30	1.65	1.21-2.25
B. CKD at Baseline: Progressive CKD/KFRT/death (n=624)				
AKD Stage at Hospital Discharge or Within 90 Days				
Stage 0C vs 0A AKD	1.97	1.32-2.93	1.94	1.31-2.88
Stage ≥1 vs 0A AKD	3.28	2.23-4.84	3.26	2.23-4.78
Stage ≥1 vs 0C AKD	1.67	1.12-2.48	1.68	1.13-2.49
Age, 10-year	1.08	0.97-1.21	--	--
Man vs woman	0.95	0.70-1.30	--	--
Black vs other	1.40	1.02-1.92	1.41	1.03-1.92
Anemia	1.61	0.89-2.92	--	--
Diabetes	1.36	0.97-1.90	1.39	1.00-1.95
Log-transformed baseline eGFR	0.56	0.32-1.00	0.52	0.30-0.91
AKI Severity				
AKI severity KDIGO 2-3 vs 1	1.39	0.96-2.02	1.41	0.98-2.03
AKI severity KDIGO 3D vs 1	1.62	1.05-2.50	1.55	1.03-2.33
SOFA score ≥4 vs <4	1.11	0.81-1.53	--	--

^aInitial model; ^bFinal model after backward selection

Table S6. Cox Proportional-Hazards Model for Doubling of Serum Creatinine, KFRT, or Death

Complete Cohort (n=1231)	Adjusted HR ^a	95% CI	Adjusted HR ^b	95% CI
AKD Stage at Hospital Discharge or Within 90 Days				
Stage 0C vs 0A AKD	1.18	0.82-1.71	1.19	0.83-1.73
Stage ≥1 vs 0A AKD	2.40	1.70-3.38	2.38	1.69-3.35
Stage ≥1 vs 0C AKD	2.02	1.38-2.98	1.99	1.36-2.92
Age, 10-year	1.02	0.93-1.13	--	--
Man vs woman	0.96	0.73-1.27	--	--
Black vs other	1.61	1.21-2.14	1.61	1.21-2.14
Anemia	1.87	1.16-3.03	1.89	1.17-3.05
Diabetes	1.11	0.81-1.52	--	--
Log-transformed baseline eGFR	0.63	0.44-0.89	0.61	0.43-0.85
AKI Severity				
AKI severity KDIGO 2-3 vs 1	1.10	0.79-1.53	1.08	0.78-1.51
AKI severity KDIGO 3D vs 1	1.70	1.14-2.52	1.65	1.13-2.43
SOFA score ≥4 vs <4	1.45	1.08-1.94	1.45	1.08-1.93

^aInitial model; ^bFinal model after backward selection

Table S7. Cox Proportional-Hazards Model for Incident or Progressive CKD

Complete Cohort (n=1231)	Adjusted HR ^a	95% CI	Adjusted HR ^b	95% CI
AKD Stage at Hospital Discharge or Within 90 Days				
Stage OC vs OA AKD	2.18	1.59-3.00	2.23	1.63-3.06
Stage ≥1 vs OA AKD	4.26	3.12-5.81	4.65	3.48-6.22
Stage ≥1 vs OC AKD	1.95	1.45-2.62	2.09	1.58-2.76
Age, 10-year	1.11	1.02-1.21	1.09	1.01-1.18
Man vs woman	0.92	0.73-1.17	--	--
Black vs other	1.22	0.96-1.54	1.22	0.97-1.55
Anemia	1.63	1.10-2.41	1.61	1.09-2.36
Diabetes	0.93	0.70-1.24	--	--
Log-transformed baseline eGFR	1.06	0.80-1.41	--	--
AKI Severity				
AKI severity KDIGO 2-3 vs 1	1.21	0.92-1.59	--	--
AKI severity KDIGO 3D vs 1	1.27	0.88-1.82	--	--
SOFA score ≥4 vs <4	1.52	1.19-1.95	1.55	1.22-1.97

^aInitial model; ^bFinal model after backward selection

Table S8. Cox Proportional-Hazards Model for KFRT or Death

Complete Cohort (n=1231)	Adjusted HR ^a	95% CI	Adjusted HR ^b	95% CI
AKD Stage at Hospital Discharge or Within 90 Days				
Stage 0C vs 0A AKD	1.07	0.71-1.60	1.07	0.72-1.60
Stage ≥1 vs 0A AKD	2.21	1.54-3.19	2.20	1.53-3.17
Stage ≥1 vs 0C AKD	2.07	1.36-3.17	2.06	1.35-3.15
Age, 10-year	1.02	0.92-1.13	--	--
Man vs woman	1.04	0.77-1.41	--	--
Black vs other	1.82	1.33-2.48	1.81	1.33-2.47
Anemia	1.65	1.00-2.71	1.66	1.02-2.73
Diabetes	1.05	0.75-1.48	--	--
Log-transformed baseline eGFR	0.44	0.30-0.64	0.43	0.30-0.62
AKI Severity				
AKI severity KDIGO 2-3 vs 1	1.01	0.70-1.46	1.01	0.70-1.45
AKI severity KDIGO 3D vs 1	1.76	1.16-2.66	1.73	1.16-2.59
SOFA score ≥4 vs <4	1.34	0.99-1.83	1.35	0.99-1.84

^aInitial model; ^bFinal model after backward selection

Table S9. Cox Proportional-Hazards Model for CKD Incidence, Progression, KFRT, or Death for Patients with Measured (non-imputed) Baseline Serum Creatinine Data

Partial Cohort (n=623)	Adjusted HR ^a	95% CI	Adjusted HR ^b	95% CI
AKD Stage at Hospital Discharge or Within 90 Days				
Stage 0C vs 0A AKD	1.74	1.18-2.58	1.78	1.21-2.61
Stage ≥1 vs 0A AKD	1.96	1.25-3.06	2.15	1.42-3.28
Stage ≥1 vs 0C AKD	1.12	0.70-1.79	1.21	0.78-1.87
Age, 10-year	1.03	0.91-1.16	--	--
Man vs woman	0.99	0.71-1.39	--	--
Black vs other	1.22	0.87-1.71	--	--
Anemia	1.96	1.07-3.60	1.84	1.02-3.33
Diabetes	0.95	0.64-1.40	--	--
Log-transformed baseline eGFR	1.00	0.69-1.44	--	--
AKI Severity				
AKI severity KDIGO 2-3 vs 1	1.21	0.84-1.76	--	--
AKI severity KDIGO 3D vs 1	1.69	0.99-2.88	--	--
SOFA score ≥4 vs <4	1.37	0.96-1.94	1.39	0.99-1.95

^aInitial model; ^bFinal model after backward selection