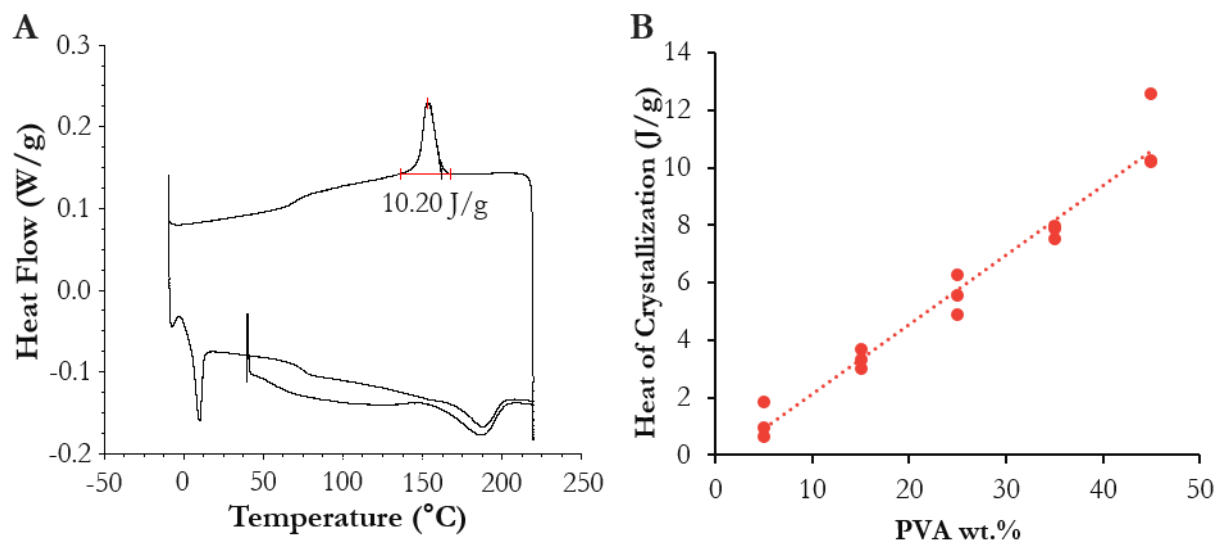
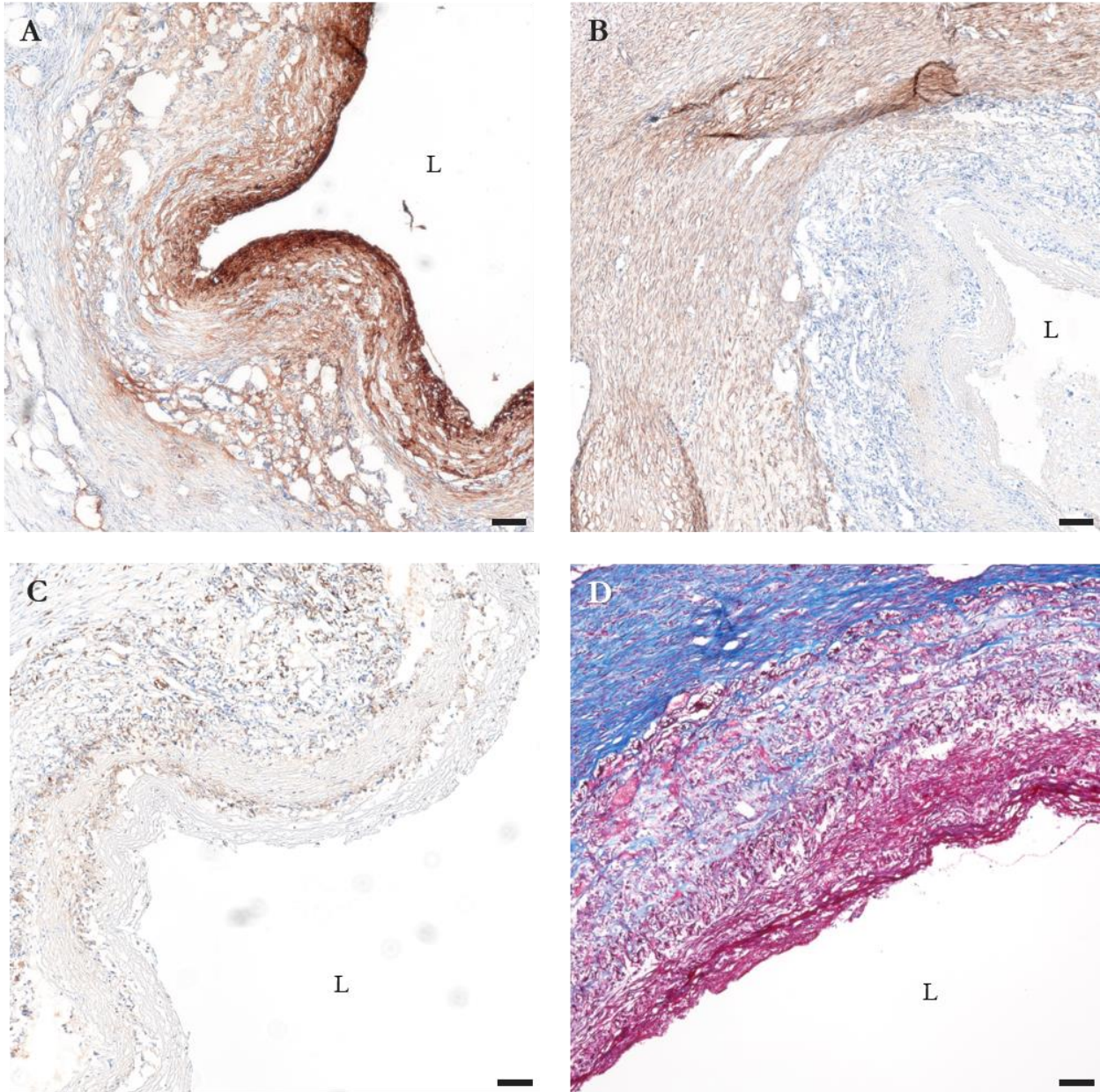


## Supplementary Information



**Figure SIV-1.** Quantification of PVA mass percentage in PGS:PVA blends. **(A)** DSC scan of a 45% wt. PVA film. The area under the curve of the measured PVA crystallization peak is shown. Exotherm up. **(B)** Calibration curve constructed from the heats of crystallization of films of known mass ratios. Linear regression gave  $R^2 = 0.9613$  and  $p = 1.46E-10$ .



**Figure SIV-2.** Transverse sections of graft explanted at 15 d. **(A)** IHC staining for vWF (brown). **(B)** IHC staining for SMA (brown). **(C)** IHC staining for IBA1 (brown). **(D)** Masson's trichrome staining. Blue: collagen. Red: muscle, cytoplasm, fibrin. L indicates lumen.