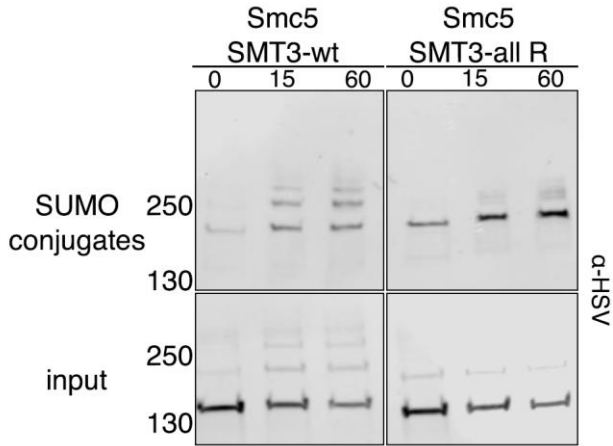


Supplemental Materials

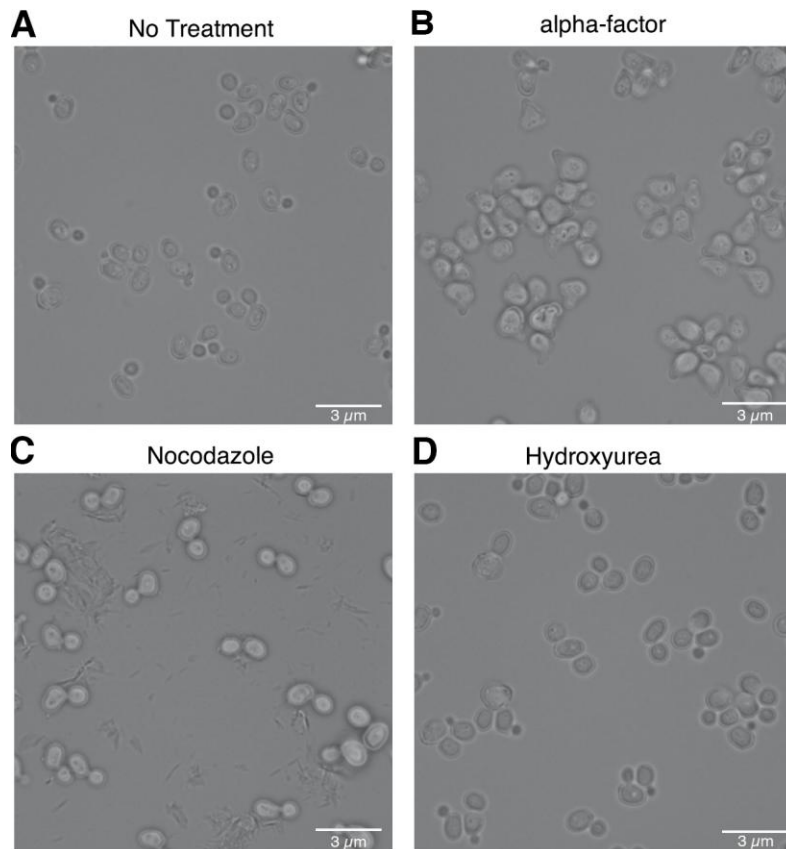
Molecular Biology of the Cell

Bradley *et al.*



Supplemental Figure 1. *Ethanol-induced Smc5 appears to be primarily a poly-sumoylation chain*

(A-B) Cells with 3xHSV-Smc5 expressed from its endogenous promoter and expressing either His₆-SMT3 that contains all lysine residues (SMT3-wt) or all lysine residues converted to arginine residues (SMT3-all R) were exposed to 10% ethanol over a 60-minute time course. Cell lysates (bottom panels) and metal affinity purified sumoylated proteins (top panels) were examined by Western analysis using an anti-HSV antibody.



Supplemental Figure 2. Images of yeast cells during cell-cycle arrest.

(A) Cells in asynchronous growth. (B) Cells arrested with in G1 with alpha factor. (C) Cells arrested in G2/M with nocodazole. (D) Cells arrested in early S-phase with hydroxyurea.