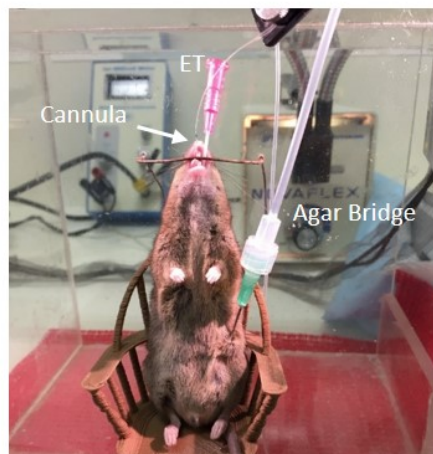


b



### Supplementary Figure 1. Nasal PD Technique

- a) A schematic diagram of nasal PD set up, and b) an intubated CF mouse with an endotracheal tube (ET) to assist in higher infusion rates during the nasal PD measurement. Fine cannula (arrow) filled with KRB inserted into the right nostril and an agar filled bridge inserted subcutaneous into the abdomen to complete the electrical circuit.