

Microfluidic chip grafted with integrin tension sensors for evaluating the effects of flowing shear force and ROCK inhibitor on platelets

Subin Mao^{a,*}, Anwasha Sarkar^{a, b,*}, Yongliang Wang^b, Chao Song^a, Dana LeVine^c, Xuefeng Wang^{b,**}, and Long Que^{a,**}

^A *Electrical and Computer Engineering Department, Iowa State University, Ames, USA, 50011*

^B *Department of Physics and Astronomy, Iowa State University, Ames, USA, 50011*

^C *Veterinary Clinical Sciences, Iowa State University, Ames, USA, 50011*

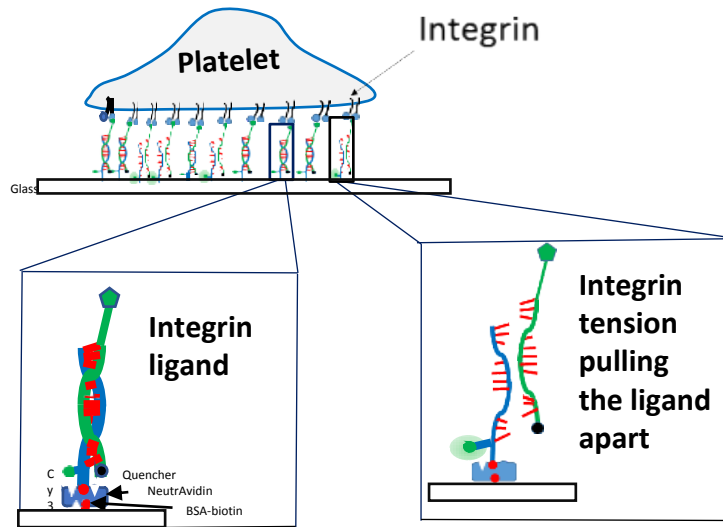
**Equal contribution*

***Correspondence: lque@iastate.edu, xuefeng@iastate.edu*

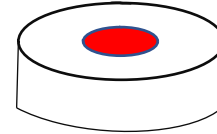
Supplementary Figures

Figure S1

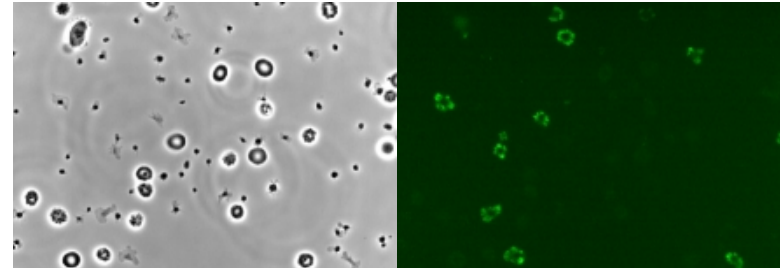
a



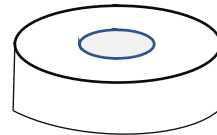
b



100 μ l whole blood+ ACD+ ADP for activation on ITS coated substrate (T_{tol} =12pN)



c



100 μ l platelet solution in F-12+ADP for activation on ITS coated substrate (T_{tol} =12pN)

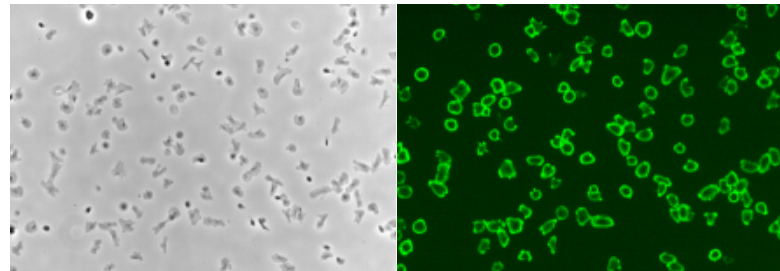


Figure S2

0.1 μM Biotin-ssDNA-Cy3 coated on microfluidic device

