

Title: Elevated complement mediator levels in endothelial-derived plasma exosomes implicate endothelial innate inflammation in diminished brain function of aging humans

Authors: Fanny M. Elahi^{1*}, Danielle Harvey², Marie Altendahl¹, Nivetha Brathaban¹, Nicole Fernandes¹, Kaitlin B. Casaletto¹, Adam M. Staffaroni¹, Pauline Maillard³, Jason D. Hinman⁴, Bruce L. Miller¹, Charles DeCarli³, Joel H. Kramer¹, Edward J. Goetzl^{5,6,7*}

¹Memory and Aging Center, Department of Neurology, University of California, San Francisco. San Francisco, CA, USA

²Department of Public Health Sciences, University of California, Davis. Davis, CA, USA

³Department of Neurology and Center for Neuroscience, University of California, Davis. Davis, CA, USA

⁴Department of Neurology, University of California, Los Angeles. Los Angeles, CA, USA

⁵Department of Medicine, University of California, San Francisco. San Francisco, CA, USA

⁶Jewish Home of San Francisco. San Francisco, CA, USA

⁷Geriatric Research Center, 1719 Broderick St., San Francisco, CA, USA

Keywords: cerebral small vessel disease; exosomes; innate immunity; inflammation; complement factors; biomarkers; white matter; neurodegeneration.

*Corresponding Authors:

Fanny M. Elahi, MD PhD

675 Nelson Rising Lane, Suite 190, San Francisco, CA, 94158

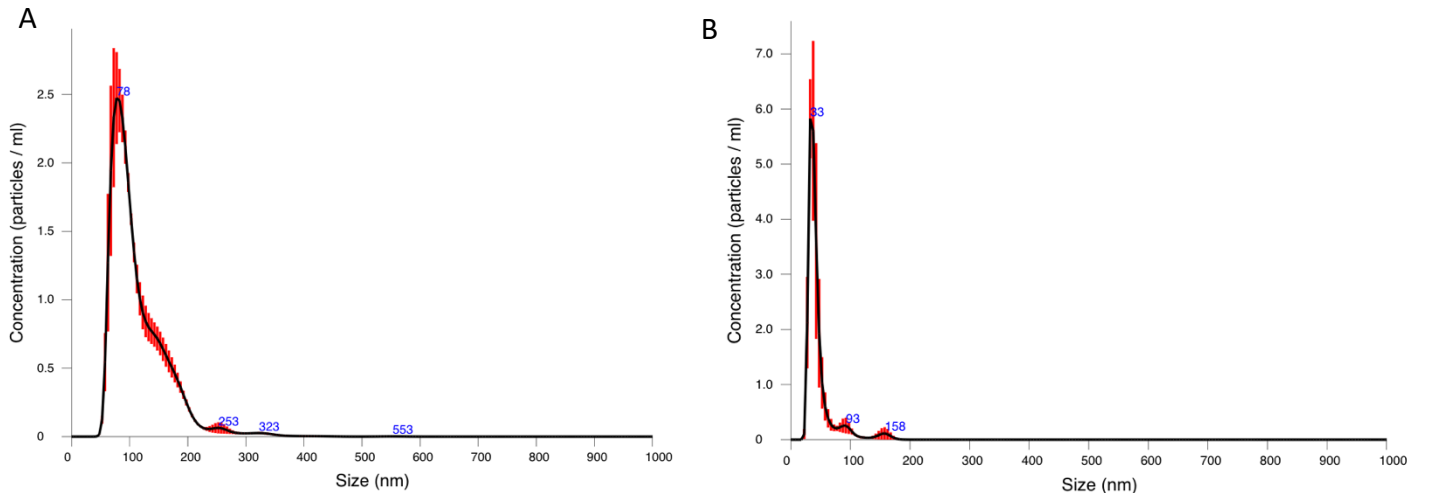
Emails: fanny.elahi@ucsf.edu and elahilab15@gmail.com

Edward J. Goetzl, MD

Geriatric Research Center, 1719 Broderick St., San Francisco, CA 94115

E-mail: edward.goetzl@ucsf.edu

Supplemental Figure 2 | Nanoparticle Tracking Assay



Results of NTA, without (A) and with (B) ExoGlow dye for typical EDE samples.