

Supplemental Figure 1. Patient flow diagram.

Supplemental Figure 2. Waterfall plot showing the best percentage change from baseline in serum PSA level for all enrolled subjects.

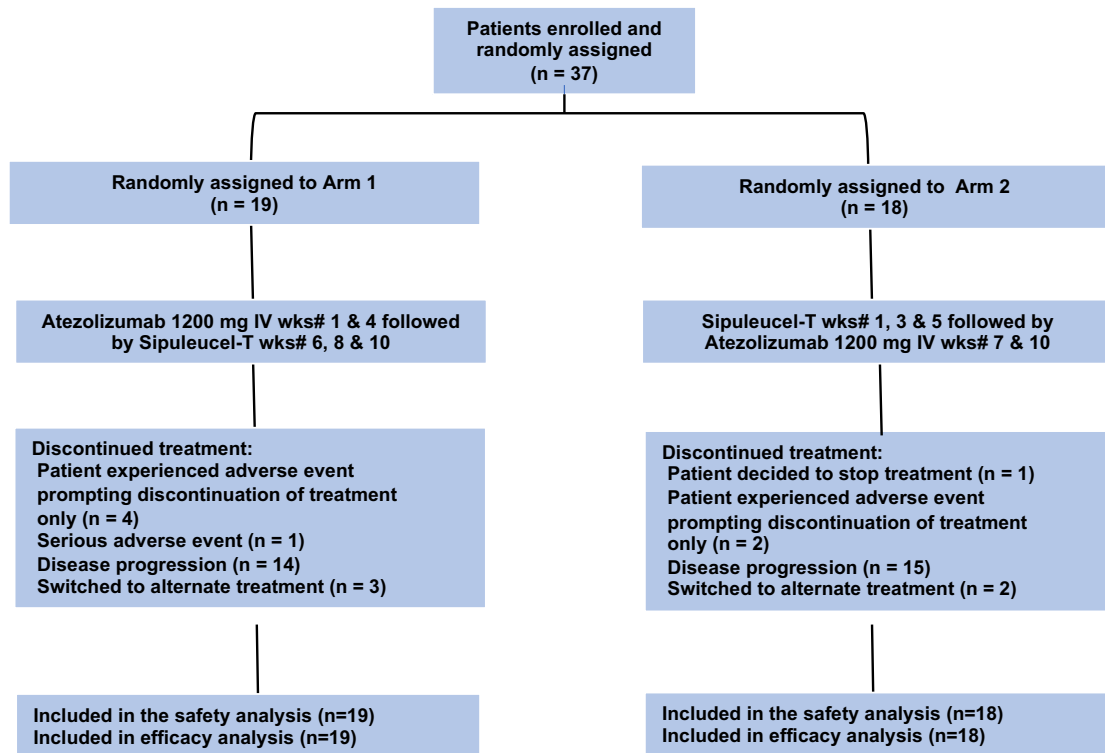
Supplemental Figure 3. A. Representative example of prostate carcinoma with a CPS score of 0 (no PD-L1 expression) from the current study. B. representative example of prostate carcinoma with an elevated CPS score from the current study. PD-L1 expression in the tumors was evaluated using the Combined Positive Score (CPS), which is the number of PD-L1 staining cells (tumor cells, lymphocytes, macrophages) divided by the total number of viable tumor cells and multiplied by 100. C. The summaries of the Combined Positive Scores for the various patient tumors are listed in the plots.

Supplemental Figure 4. Changes in TCR profiles following treatment. The TCR β CDR3 sequences from PBMC cells collected at baseline and at 11/12 weeks were reported. ○ "Responder" and × "Non-responder".

Supplemental Figure 5. Changes in serum cytokine profiles following treatment. A panel of cytokines were queried in serum samples collected at baseline and weeks 12/11 using the 22-plex customized human cytokine Luminex assay (R&D Systems).

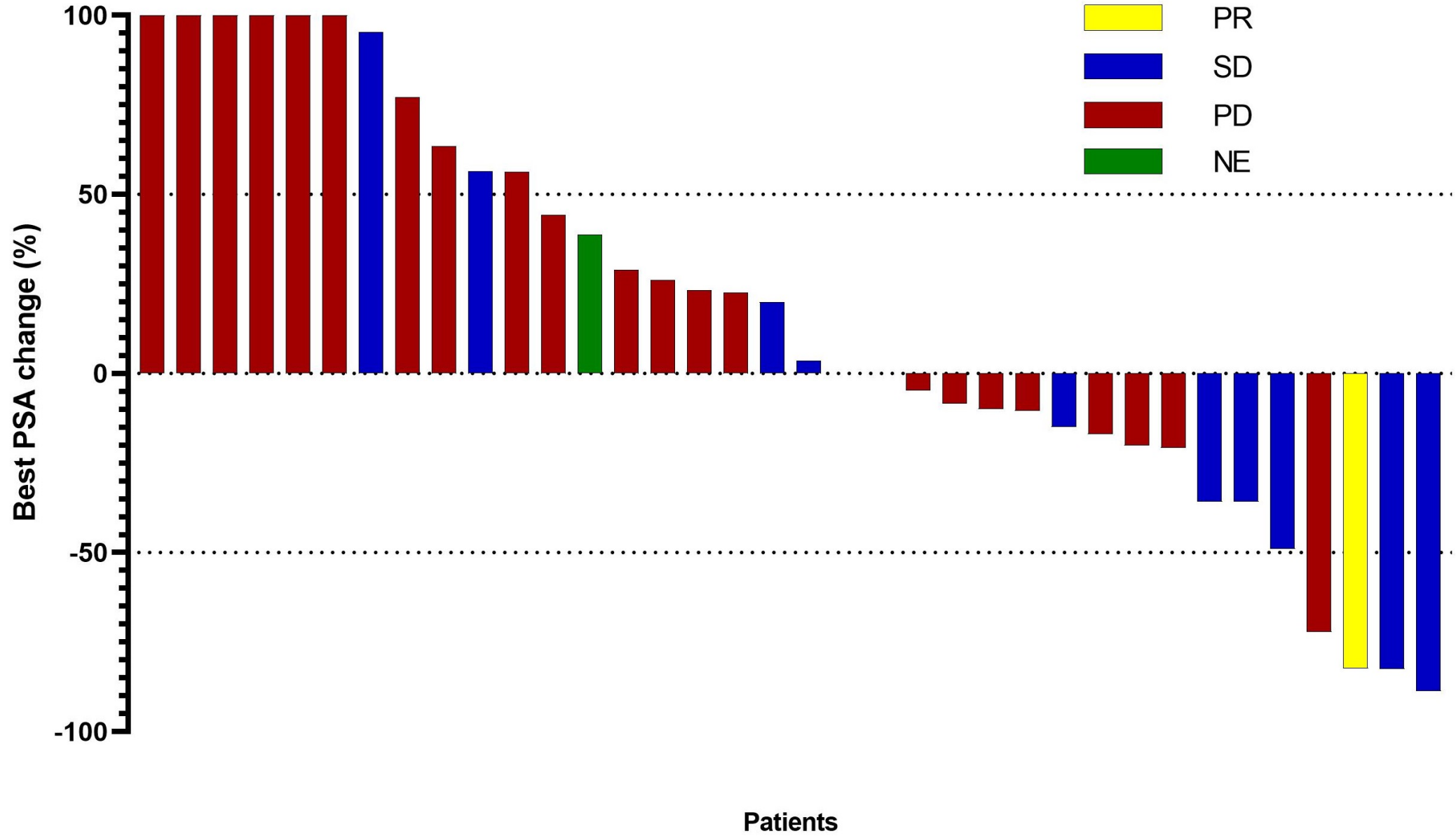
Supplemental Figure 6. Overall immune response signal comparison. Overall immune responses were indicated by sum-of-PIWAS values across all antigens with PIWAS values of 6 or greater. P-values were calculated by one-sided Wilcoxon's rank sum test.

Supplemental Figure 1

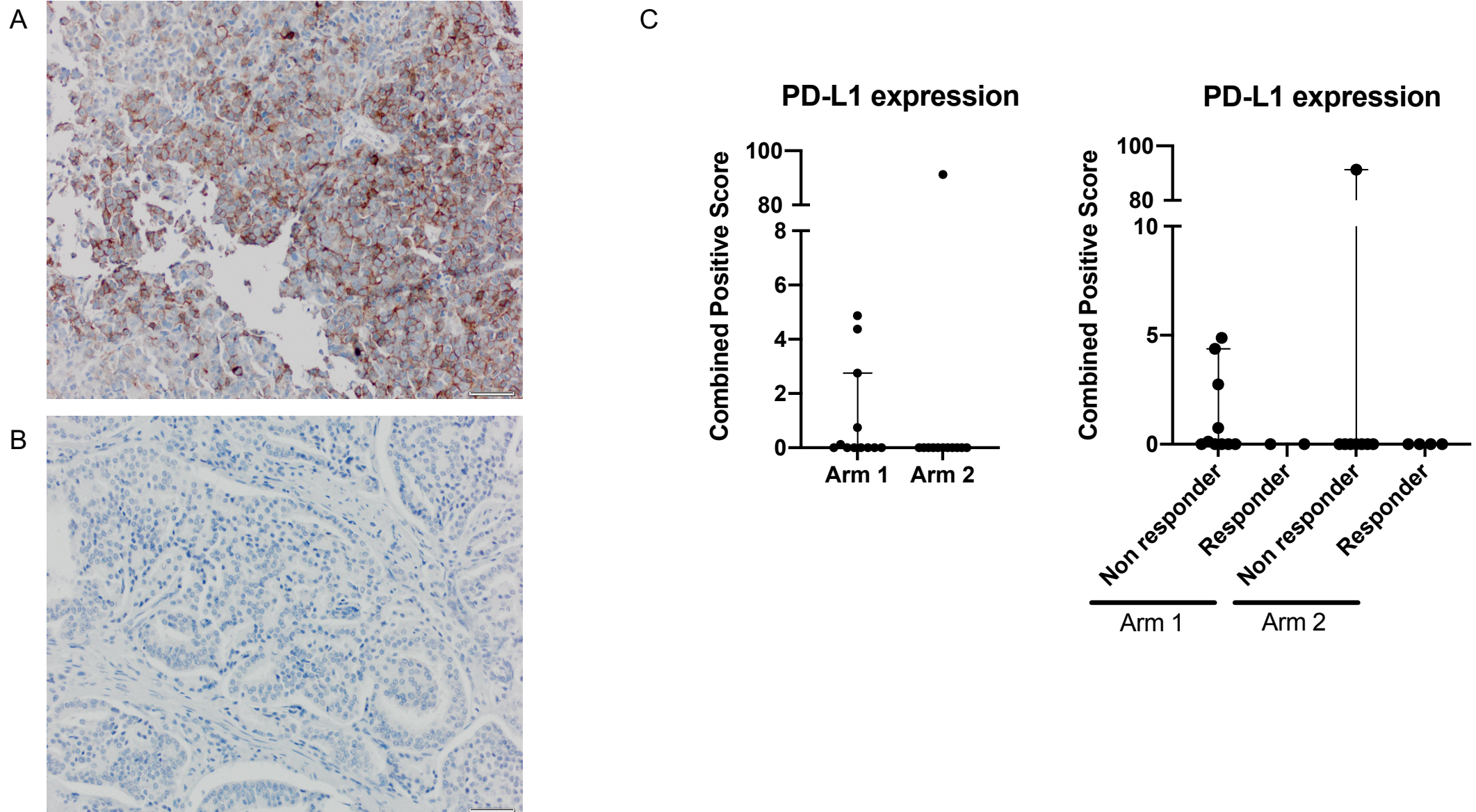


Supplemental Figure 2

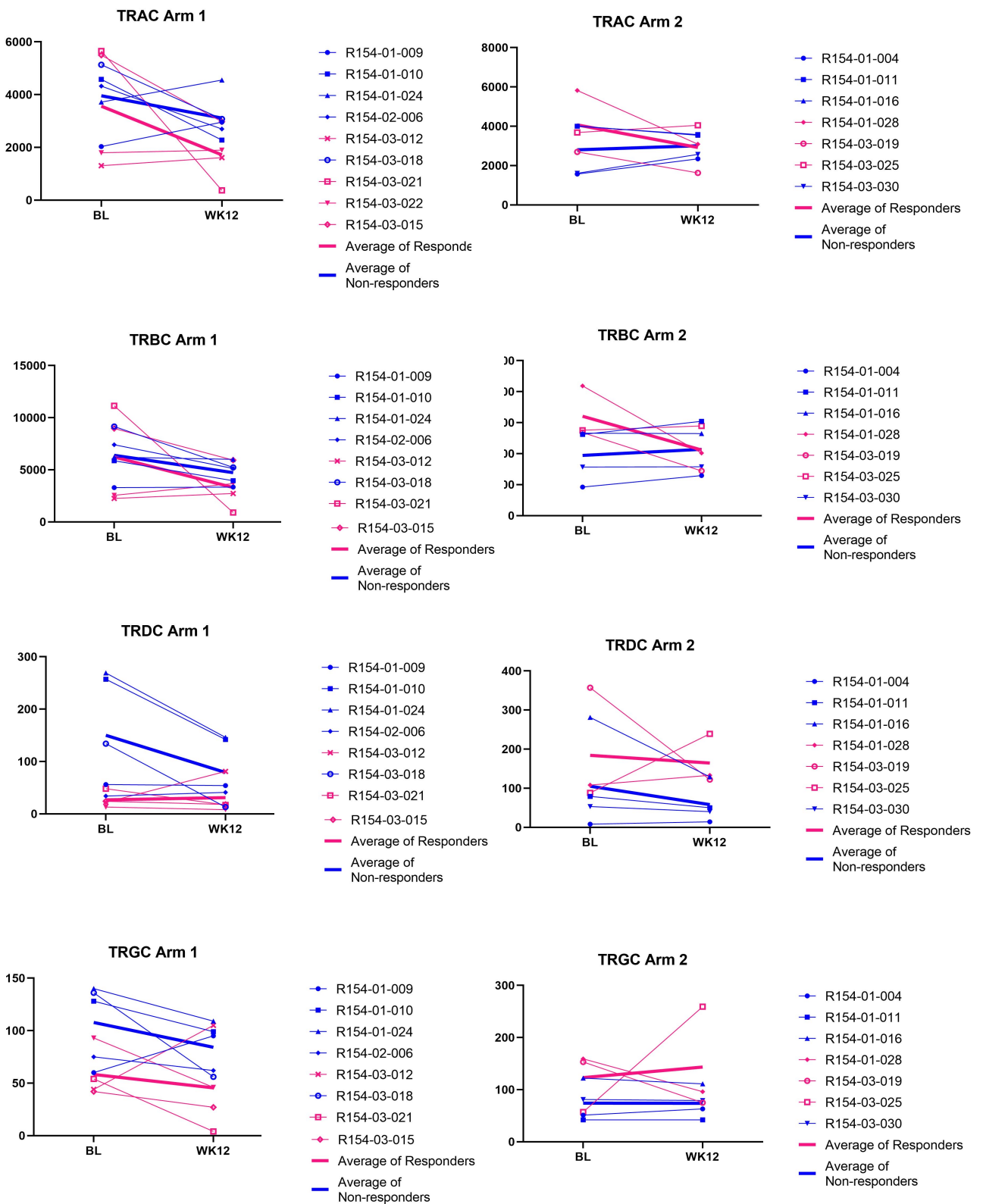
Waterfall plot of PSA changes



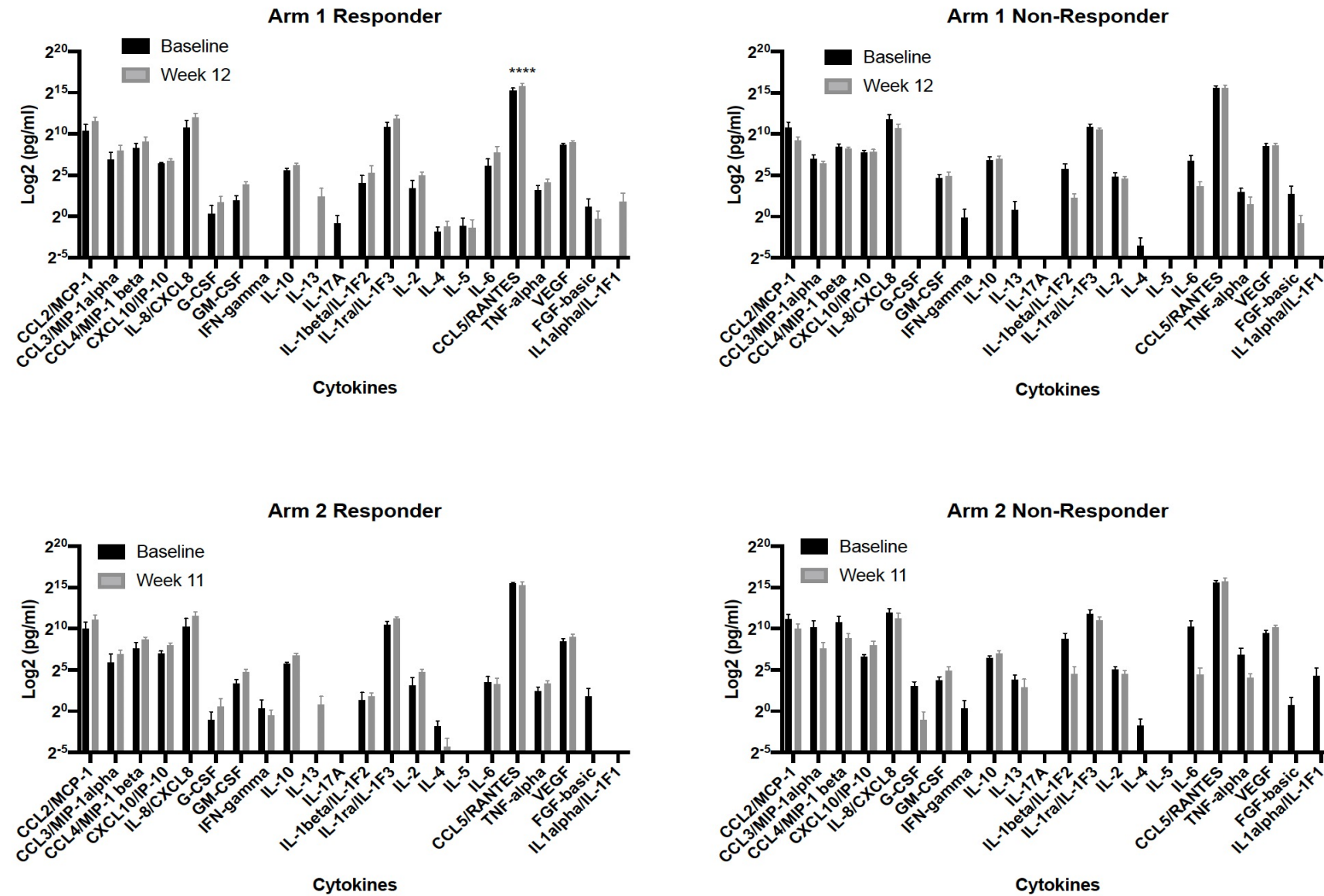
Supplemental Figure 3



Supplemental Figure 4



Supplemental Figure 5



Supplemental
Figure 6