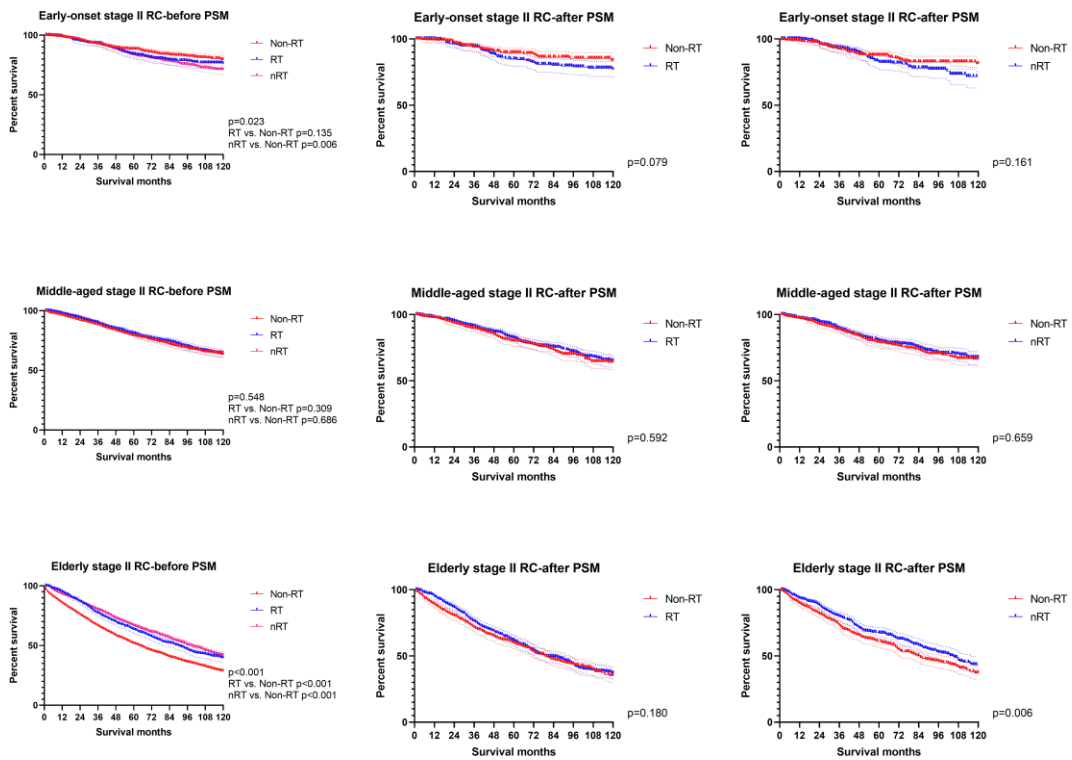


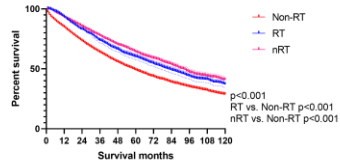
Subgroup	HR (95%CI)	p-value
Early-onset stage II RC		
RT vs. Non-RT	1.083(0.788-1.490)	0.622
nRT vs. Non-RT	0.995(0.740-1.339)	0.974
Middle-aged stage II RC		
RT vs. Non-RT	0.962(0.808-1.144)	0.660
nRT vs. Non-RT	0.986(0.839-1.160)	0.869
Elderly stage II RC		
RT vs. Non-RT	0.891(0.794-1.000)	0.050
nRT vs. Non-RT	0.833(0.742-0.935)	0.002



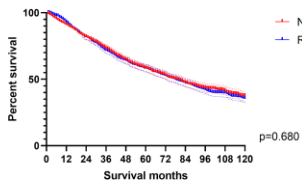
We took out the Stage II RC patients separately for analysis and got similar results comparing to the total stage II/III RC patients.

Subgroup	HR (95%CI)	p-value
Elderly stage II/III RC with RNE ≥ 12		
RT vs. Non-RT	0.974(0.897-1.058)	0.535
nRT vs. Non-RT	0.906(0.832-0.987)	0.023

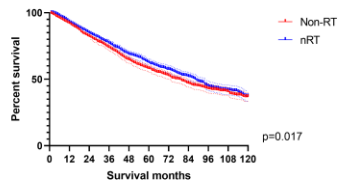
Elderly stage II/III RC with RNE ≥ 12 -before PSM



Elderly stage II/III RC with RNE ≥ 12 -after PSM



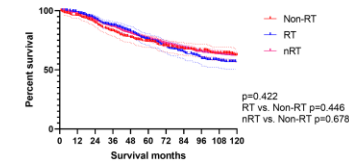
Elderly stage II/III RC with RNE ≥ 12 -after PSM



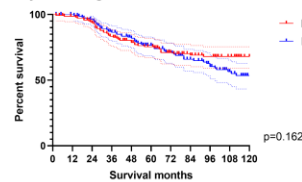
These elderly stage II/III RC patients with RNE ≥ 12 can get survival benefit from nRT but not RT.

Subgroup	HR (95%CI)	p-value
Early-onset stage II/III RC with RNE < 12		
RT vs. Non-RT	1.169(0.881-1.552)	0.279
nRT vs. Non-RT	0.926(0.718-1.194)	0.553
Middle-aged stage II/III RC with RNE < 12		
RT vs. Non-RT	1.021(0.874-1.193)	0.794
nRT vs. Non-RT	0.935(0.814-1.075)	0.347

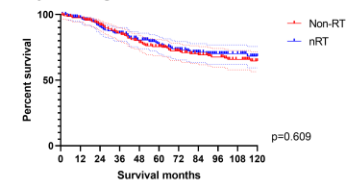
Early-onset stage II/III RC with RNE <12-before PSM



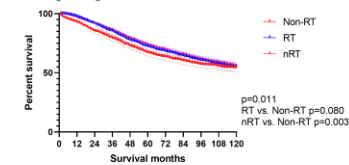
Early-onset stage II/III RC with RNE <12-after PSM



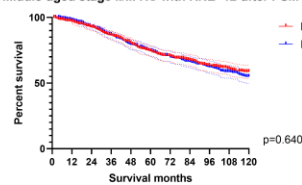
Early-onset stage II/III RC with RNE <12-after PSM



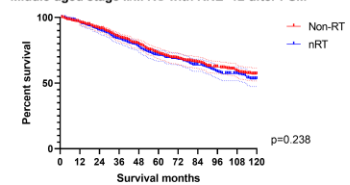
Middle-aged stage II/III RC with RNE <12-before PSM



Middle-aged stage II/III RC with RNE <12-after PSM



Middle-aged stage II/III RC with RNE <12-after PSM



Early-onset and middle-aged stage II/III RC patients with RNE < 12 cannot obtain survival benefit from radiotherapy, including nRT and postoperative RT.