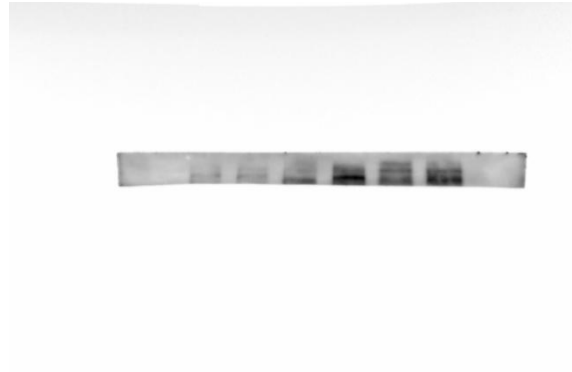


Supplementary material of “Metformin attenuates renal tubulointerstitial fibrosis via upgrading autophagy in the early stage of diabetic nephropathy” (ID c9bc53e8-5506-497b-85a7-88a00d8ce0e4).

The un-cropped wider scans of fibronectin (FN) and Collagen I in Figure 2b:

FN



(Original image)

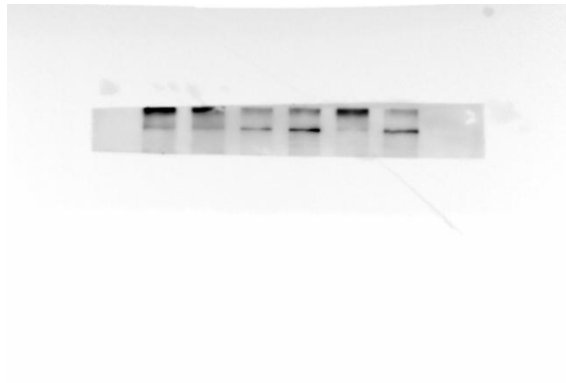


(Different exposure 1)

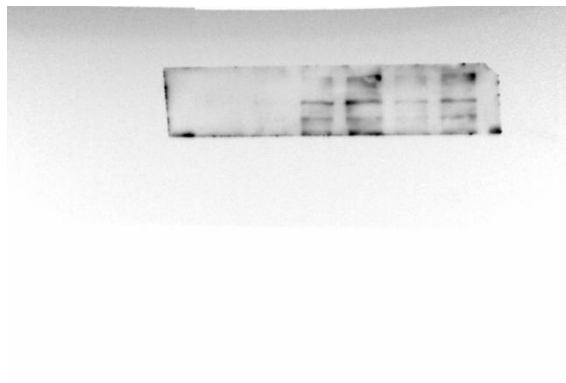


(Different exposure 2)

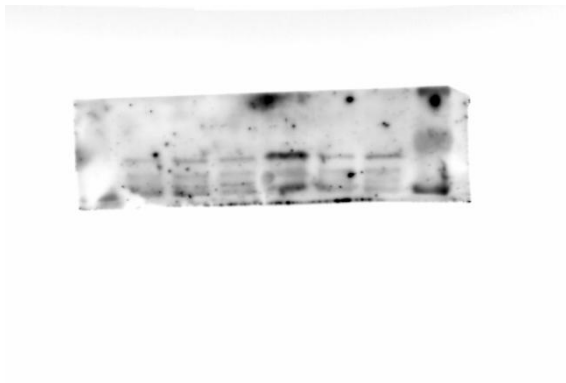
Collagen I



(Original image)



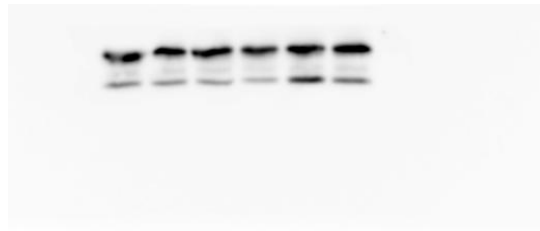
(Different exposure 1)



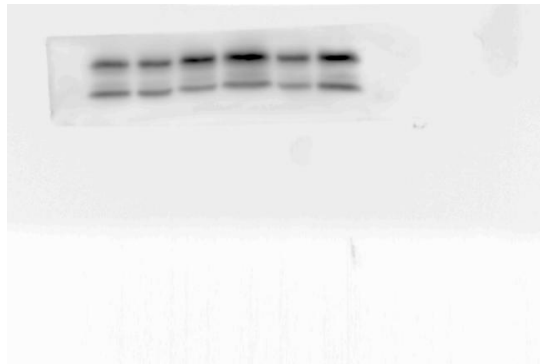
(Different exposure 2)

The un-cropped wider scans of LC 3 II and LC 3 I and P62 in Figure 3b:

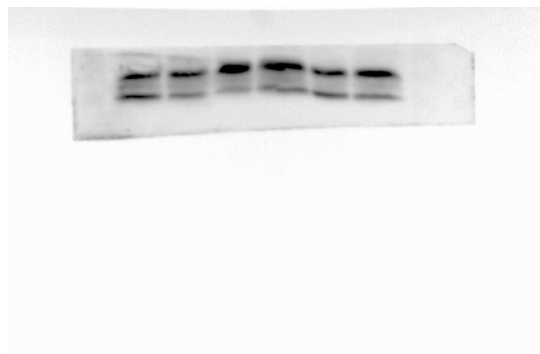
LC 3 II and LC 3 I



(Original image)

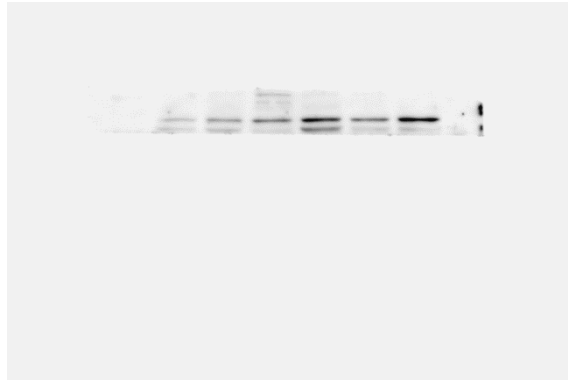


(Different exposure 1)

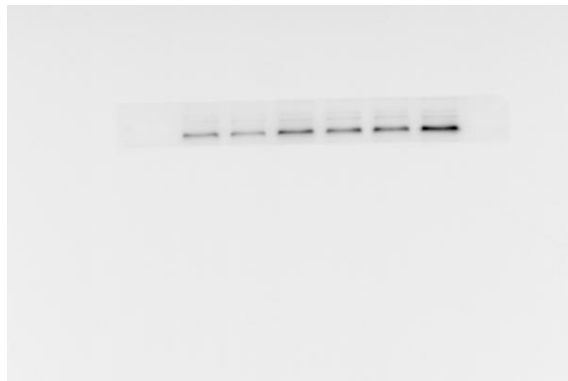


(Different exposure 2)

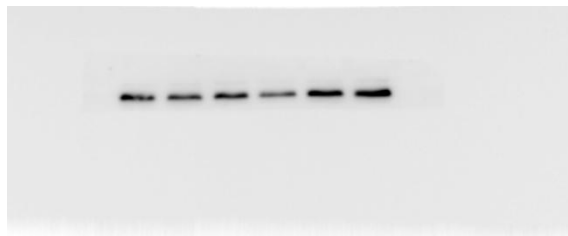
P62



(Original image)



(Different exposure 1)



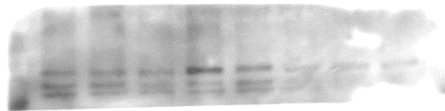
(Different exposure 2)

The un-cropped wider scans of p-AMPK and AMPK in Figure 5a:

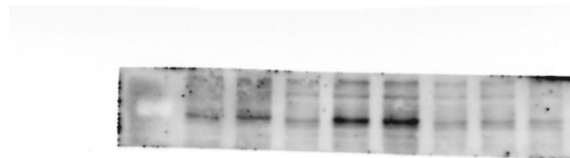
p-AMPK



(Original image)

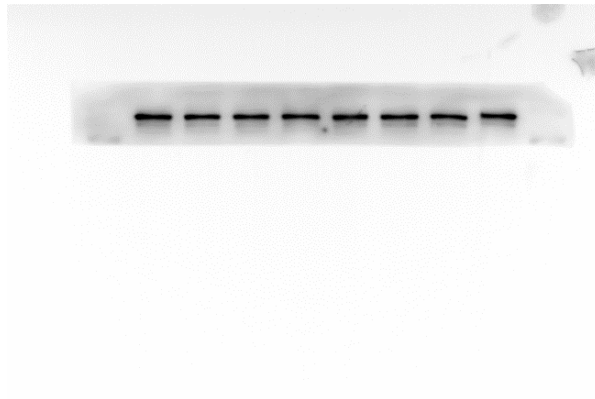


(Different exposure 1)

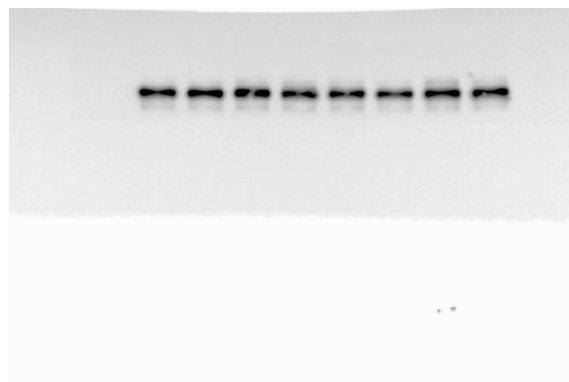


(Different exposure 2)

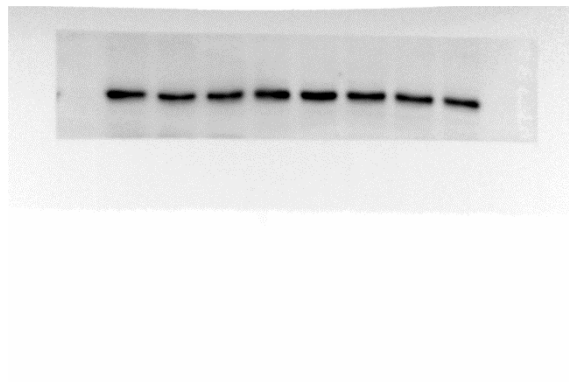
AMPK



(Original image)



1(Different exposure 1)



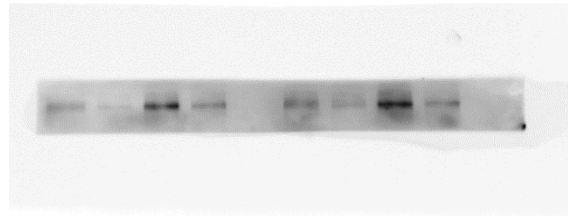
(Different exposure 2)

The un-cropped wider scans of LC 3 II and LC 3 I and fibronectin (FN) in Figure 5c:

FN (left):



(Original image)



(Different exposure 1 and 2)

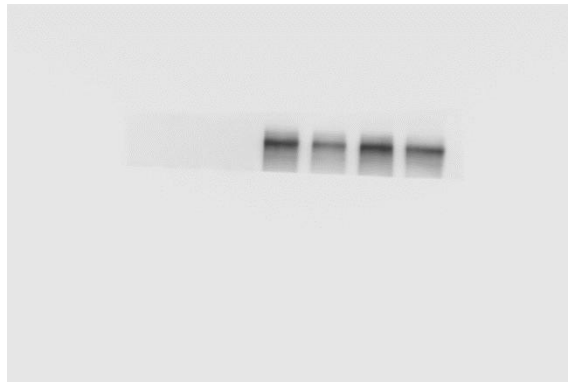
FN (right):



(Original image)



(Different exposure 1)

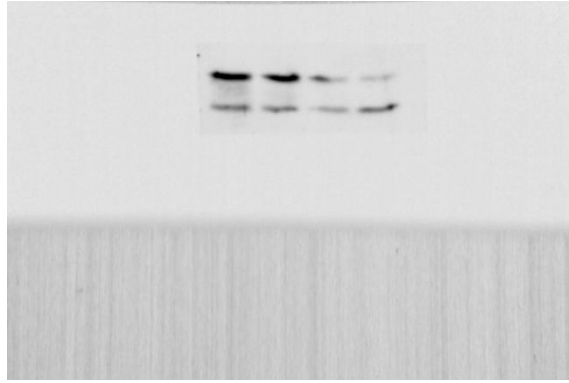


(Different exposure 2)

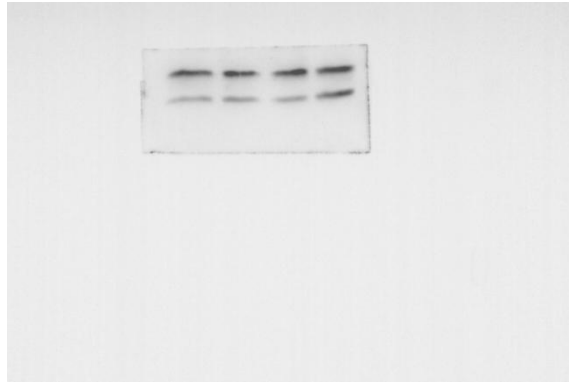
LC 3 II and LC 3 I (left):



(Original image)

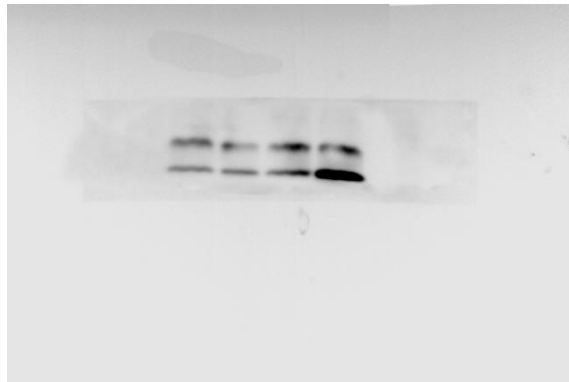


(Different exposure 1)

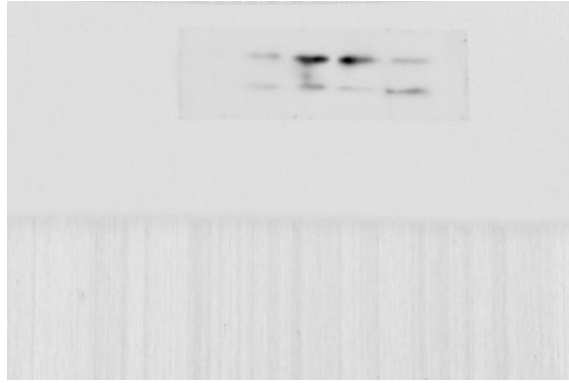


(Different exposure 2)

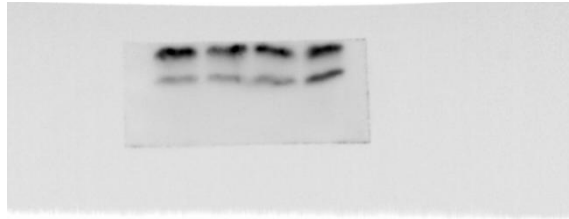
LC 3 II and LC 3 I (right):



(Original image)



(Different exposure 1)



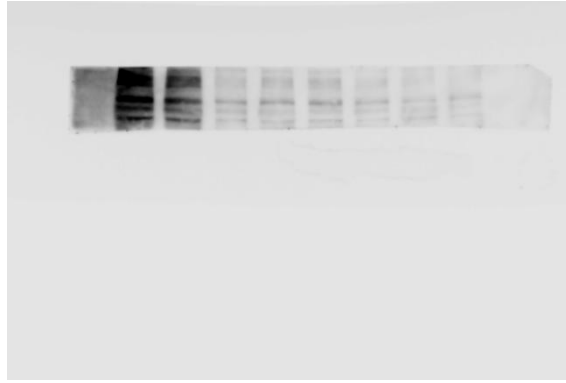
(Different exposure 2)

The un-cropped wider scans of E-Cadherin and α -SMA in Figure 6b:

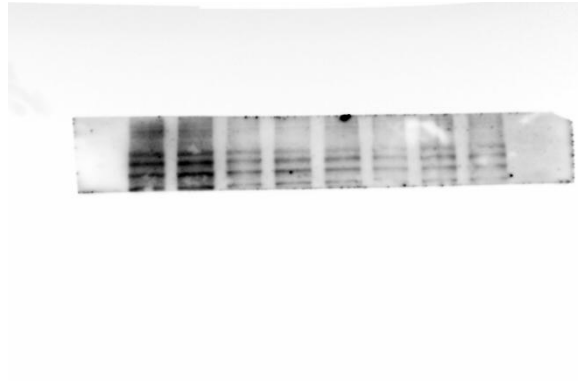
E-cadherin



(Original image)



(Different exposure 1)

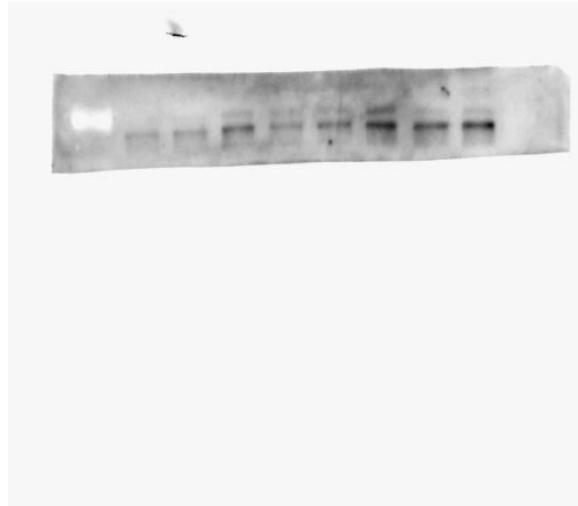


(Different exposure 2)

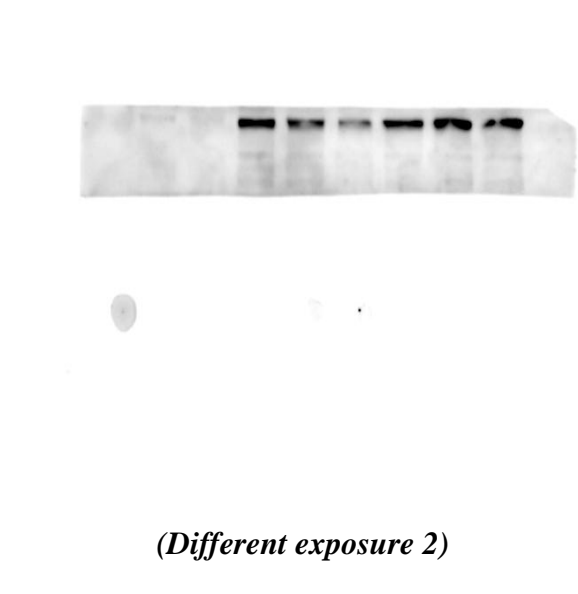
α -SMA



(Original image)

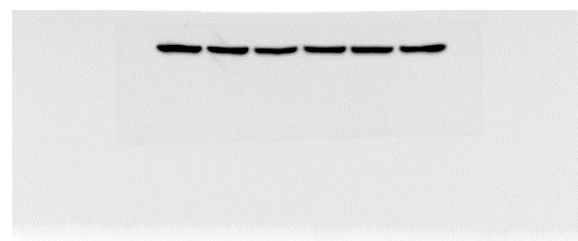


(Different exposure 1)

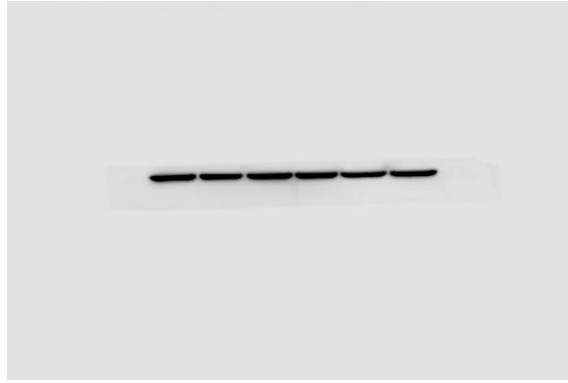


(Different exposure 2)

The un-cropped wider scans of β -actin in Figure 2b:



(Original image)



(Different exposure 1)

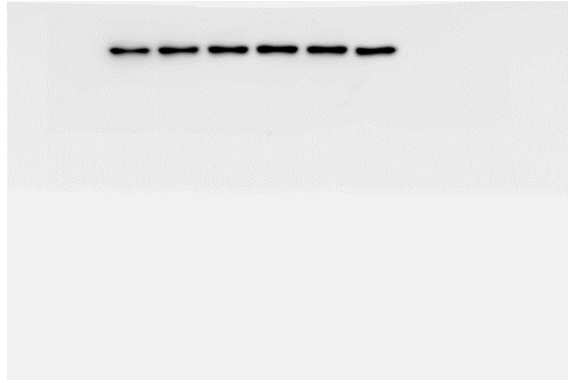


(Different exposure 2)

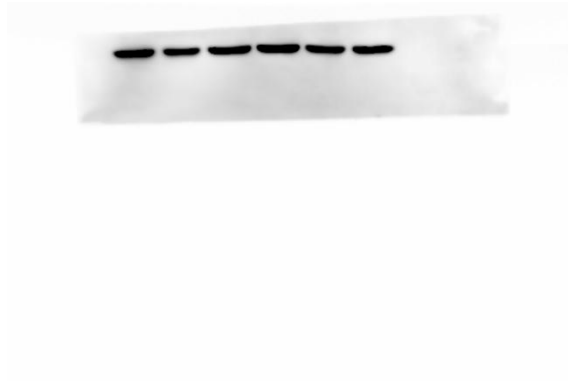
The un-cropped wider scans of β -actin in Figure 3b:



(Original image)

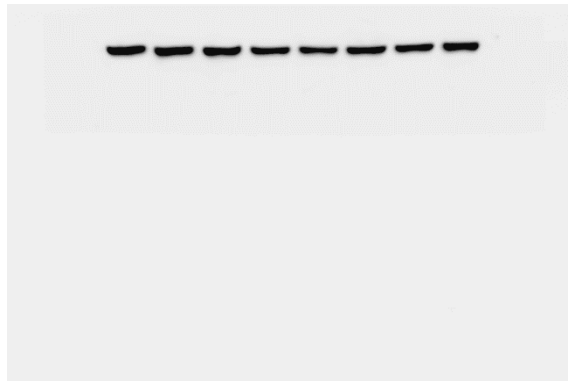


(Different exposure 1)



(Different exposure 2)

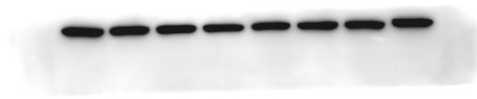
The un-cropped wider scans of β -actin in Figure 5a:



2(Original image)



(Different exposure 1)



(Different exposure 2)

The un-cropped wider scans of β -actin (left) in Figure 5c:



3(Original image)



(Different exposure 1 and 2)

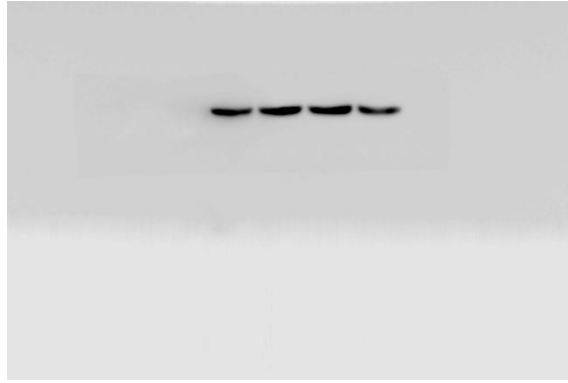
The un-cropped wider scans of β -actin (right) in Figure 5c:



(Original image)

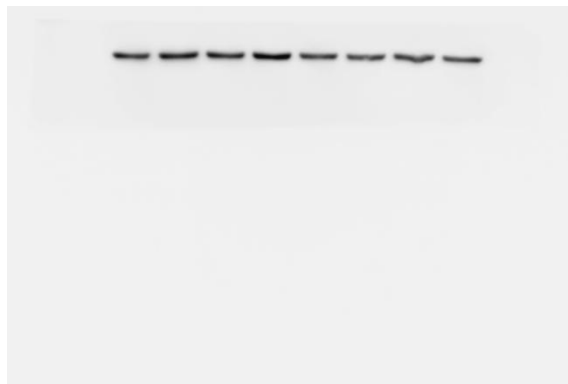


(Different exposure 1)

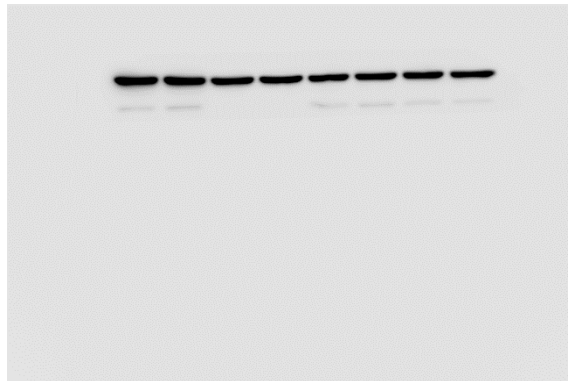


(Different exposure 2)

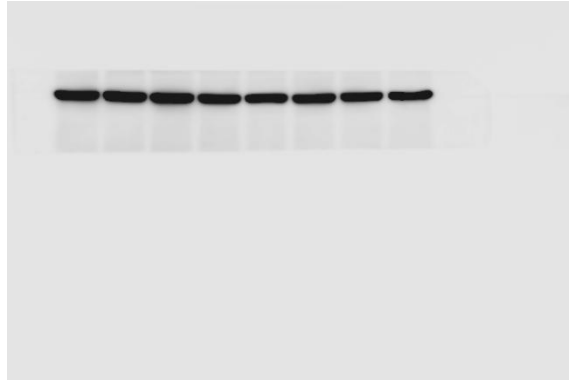
The un-cropped wider scans of β -actin in Figure 6b:



(Original image)



(Different exposure 1)



(Different exposure 2)