

Figure S1. Procalcitonin profiles. Observed procalcitonin profiles (points) and model predictions (solid lines) for all individuals included in the analysis. Colored points indicate different treatments, consisting up to three antibiotics, while triangles indicates observation without any treatment.

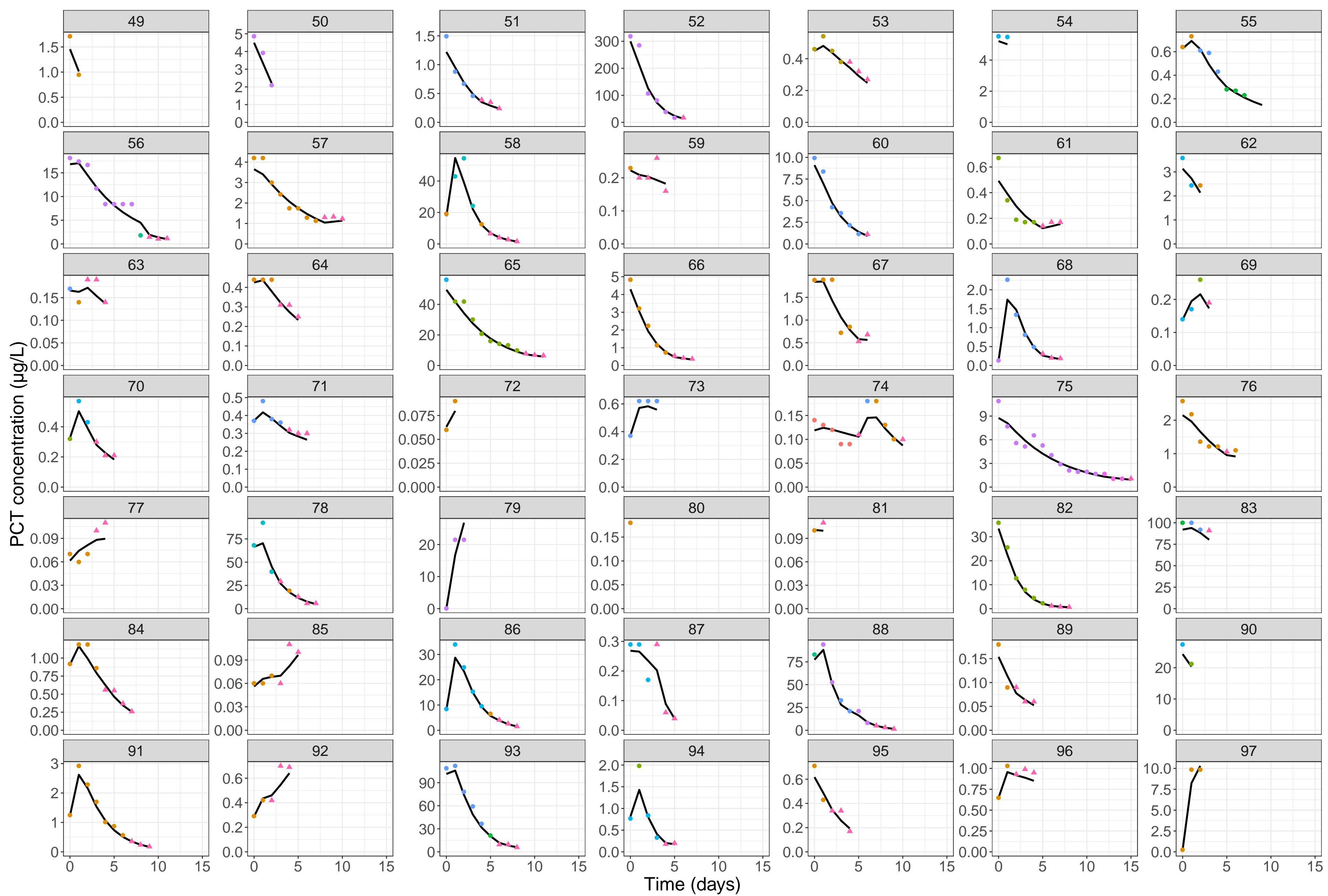


Figure S1. Procalcitonin profiles. Observed procalcitonin profiles (points) and model predictions (solid lines) for all individuals included in the analysis. Colored points indicate different treatments, consisting up to three antibiotics, while triangles indicates observation without any treatment.

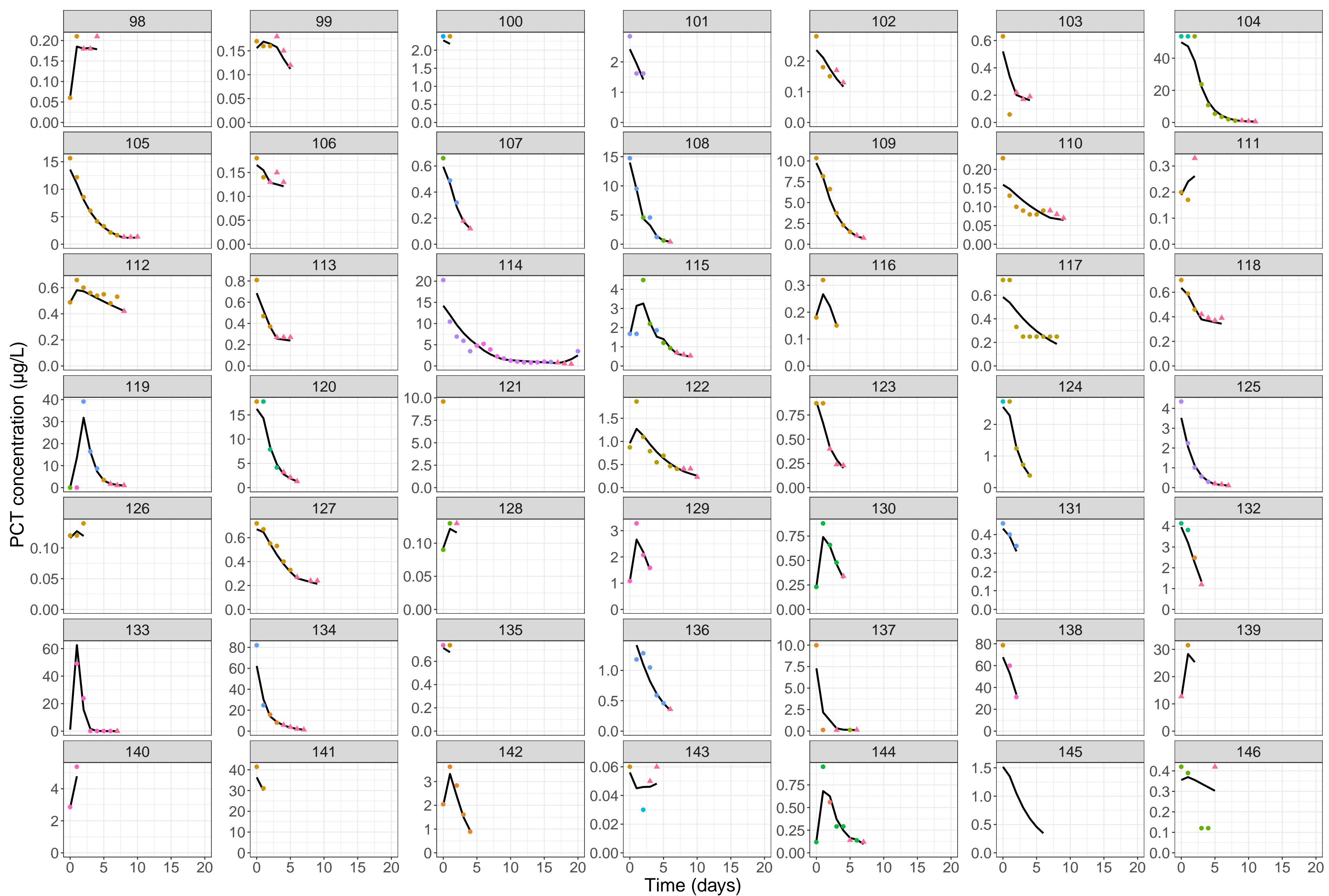


Figure S1. Procalcitonin profiles. Observed procalcitonin profiles (points) and model predictions (solid lines) for all individuals included in the analysis. Colored points indicate different treatments, consisting up to three antibiotics, while triangles indicates observation without any treatment.

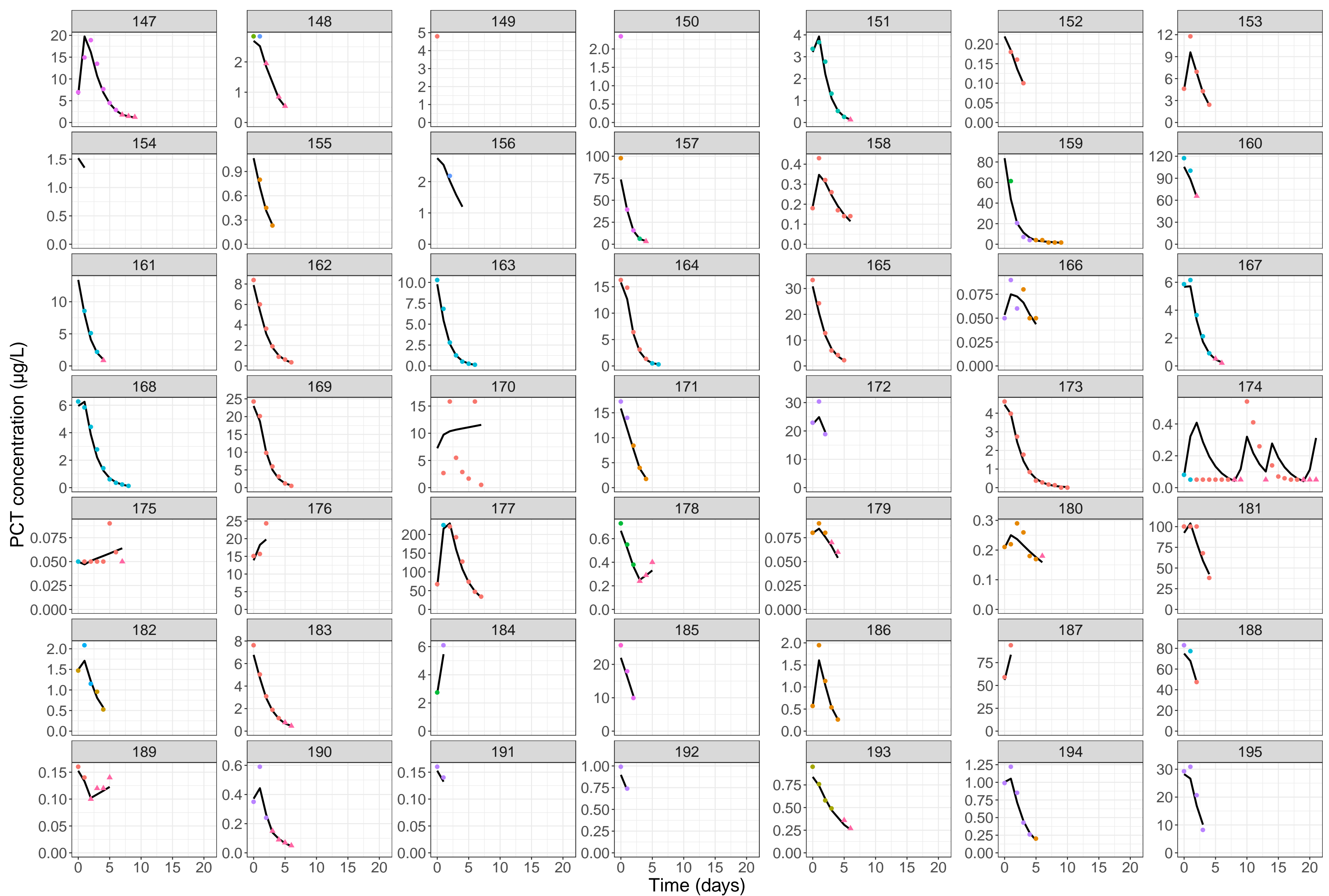


Figure S1. Procalcitonin profiles. Observed procalcitonin profiles (points) and model predictions (solid lines) for all individuals included in the analysis. Colored points indicate different treatments, consisting up to three antibiotics, while triangles indicates observation without any treatment.

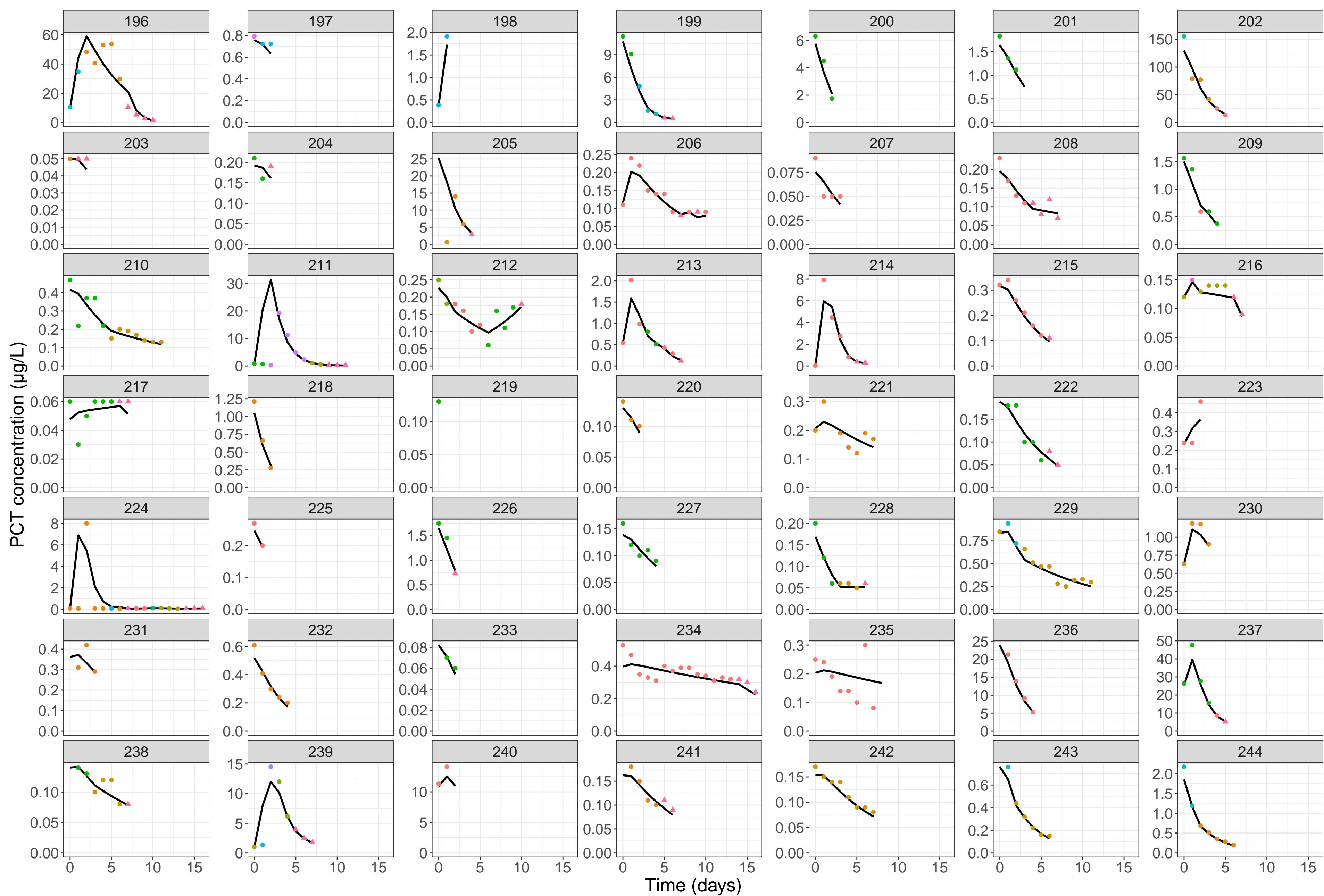


Figure S1. Procalcitonin profiles. Observed procalcitonin profiles (points) and model predictions (solid lines) for all individuals included in the analysis. Colored points indicate different treatments, consisting up to three antibiotics, while triangles indicates observation without any treatment.

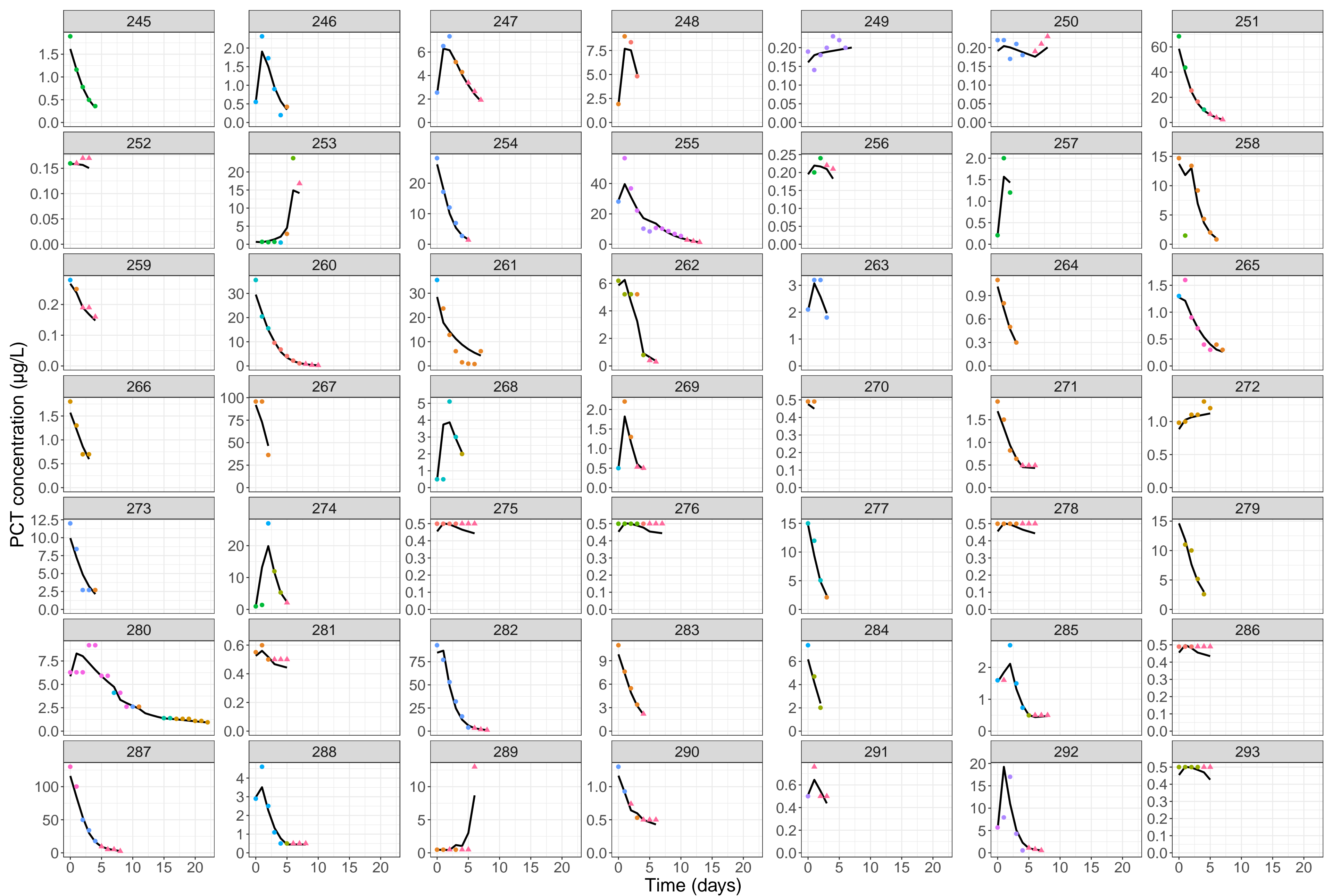


Figure S1. Procalcitonin profiles. Observed procalcitonin profiles (points) and model predictions (solid lines) for all individuals included in the analysis. Colored points indicate different treatments, consisting up to three antibiotics, while triangles indicates observation without any treatment.

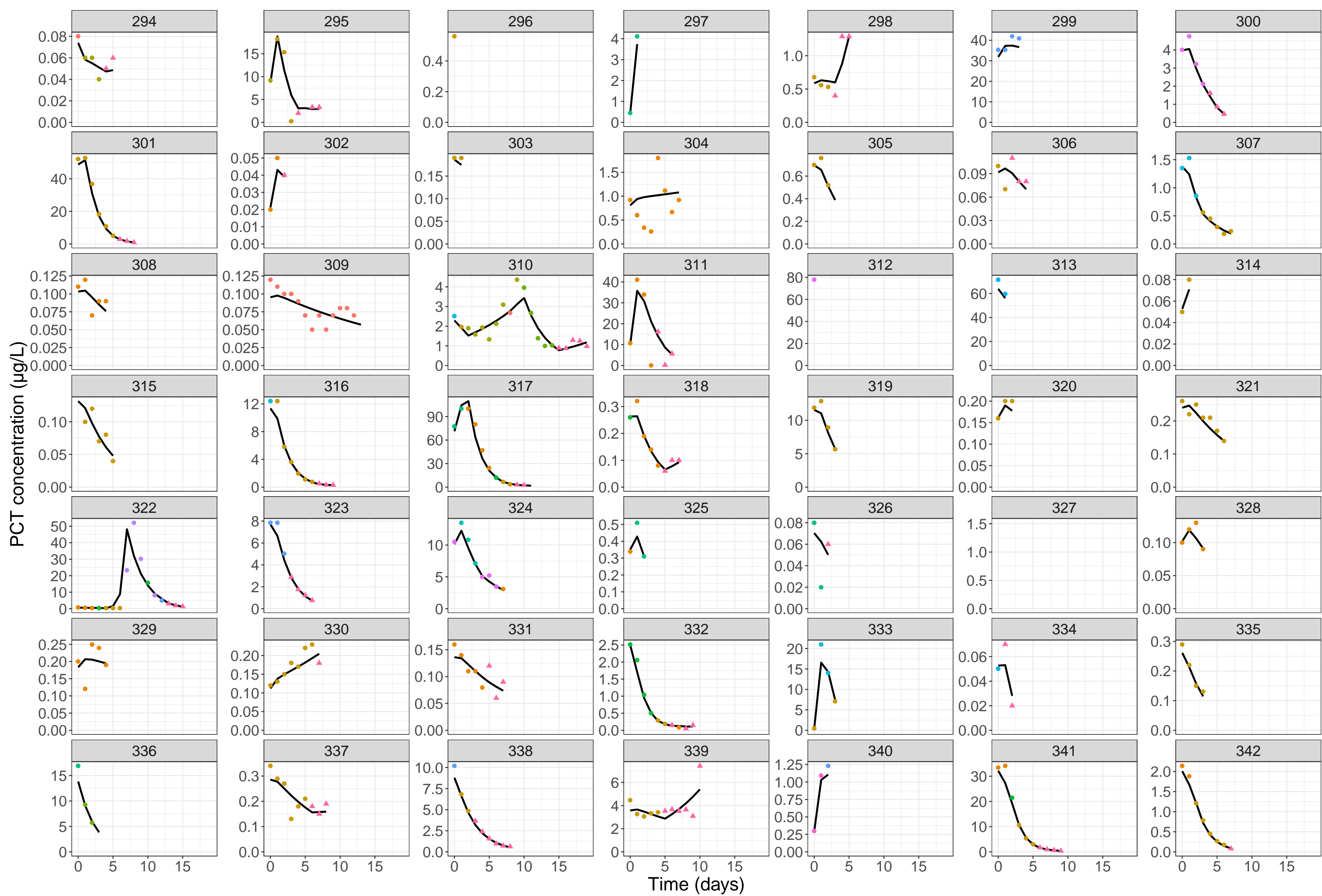


Figure S1. Procalcitonin profiles. Observed procalcitonin profiles (points) and model predictions (solid lines) for all individuals included in the analysis. Colored points indicate different treatments, consisting up to three antibiotics, while triangles indicates observation without any treatment.

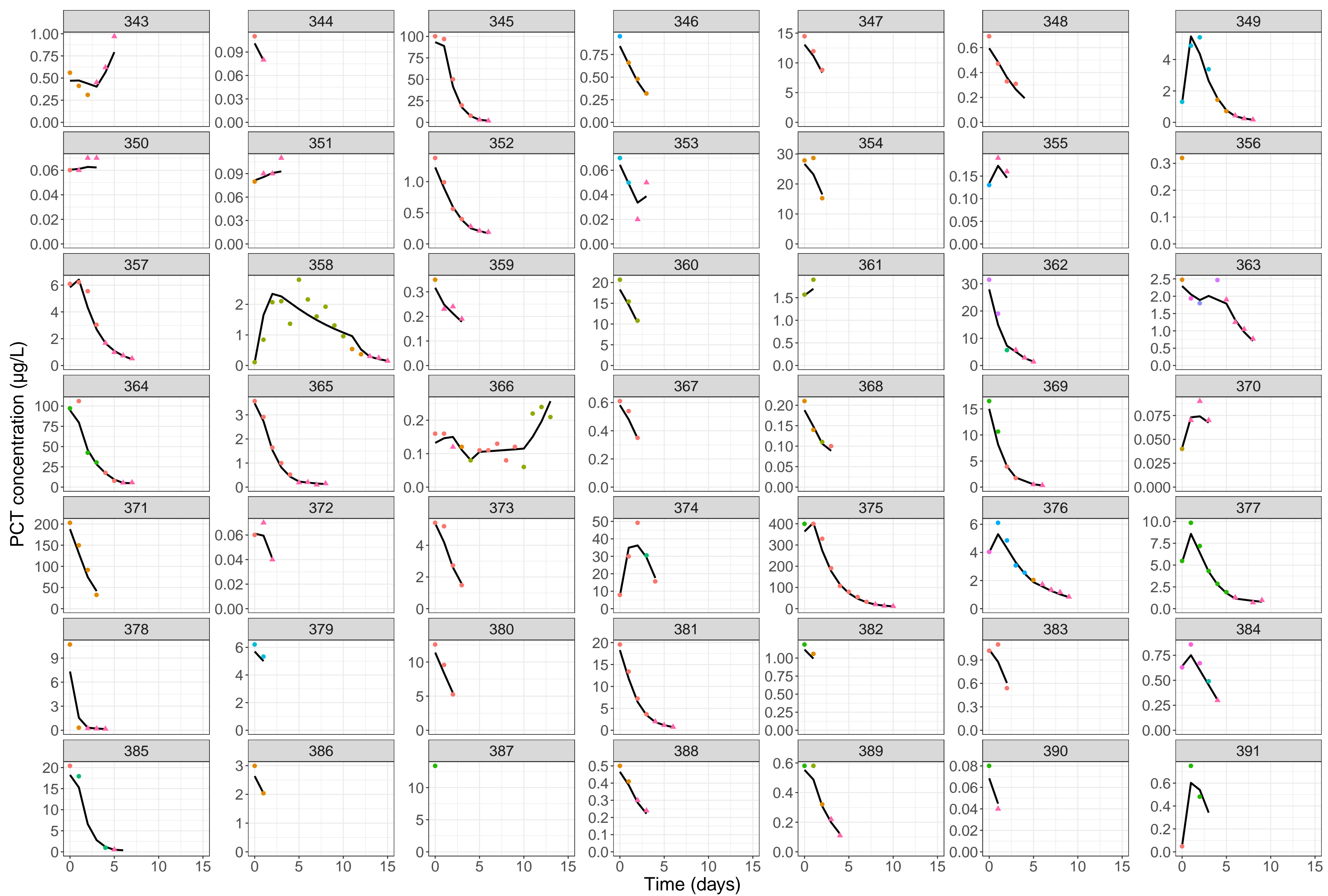


Figure S1. Procalcitonin profiles. Observed procalcitonin profiles (points) and model predictions (solid lines) for all individuals included in the analysis. Colored points indicate different treatments, consisting up to three antibiotics, while triangles indicates observation without any treatment.



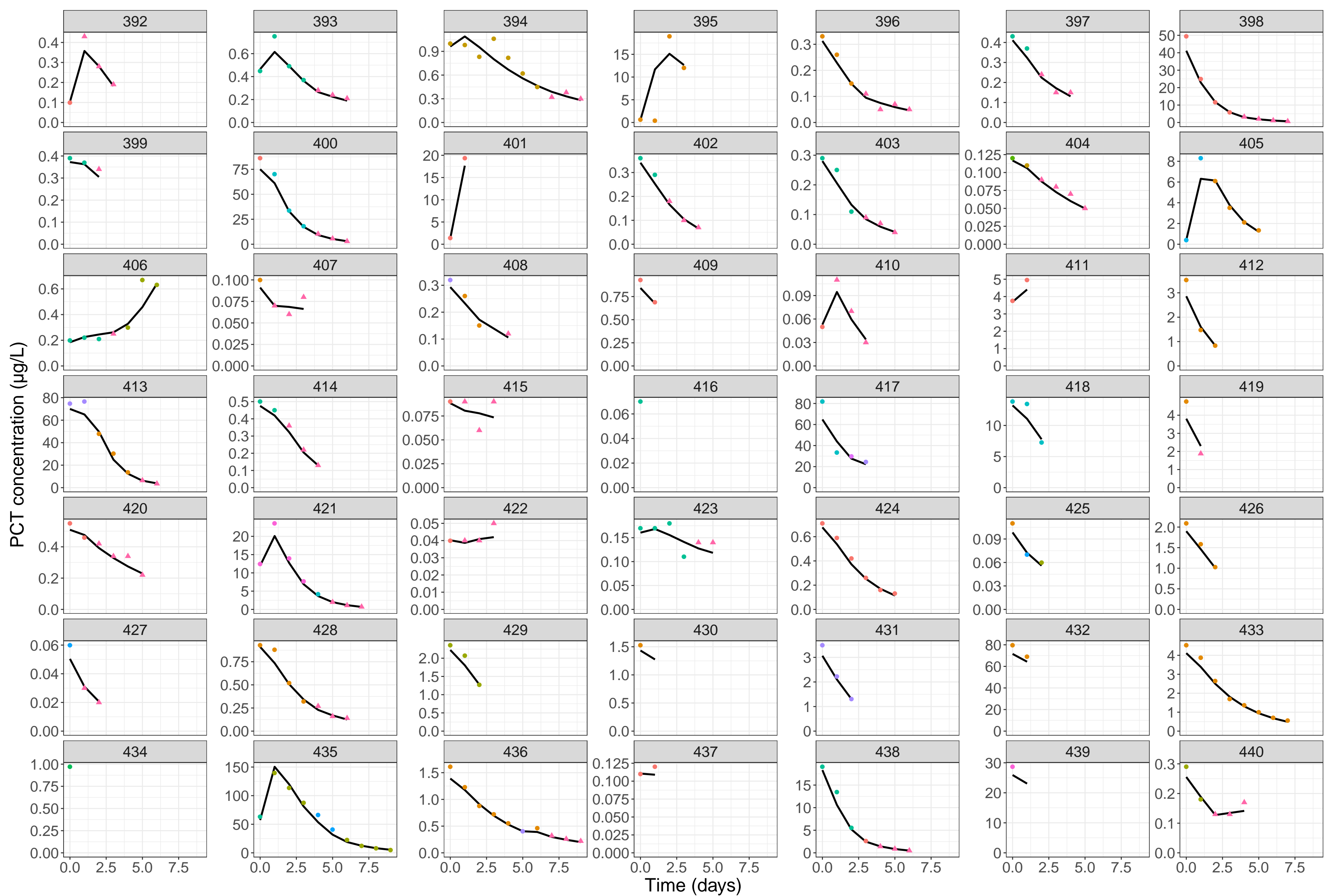


Figure S1. Procalcitonin profiles. Observed procalcitonin profiles (points) and model predictions (solid lines) for all individuals included in the analysis. Colored points indicate different treatments, consisting up to three antibiotics, while triangles indicates observation without any treatment.

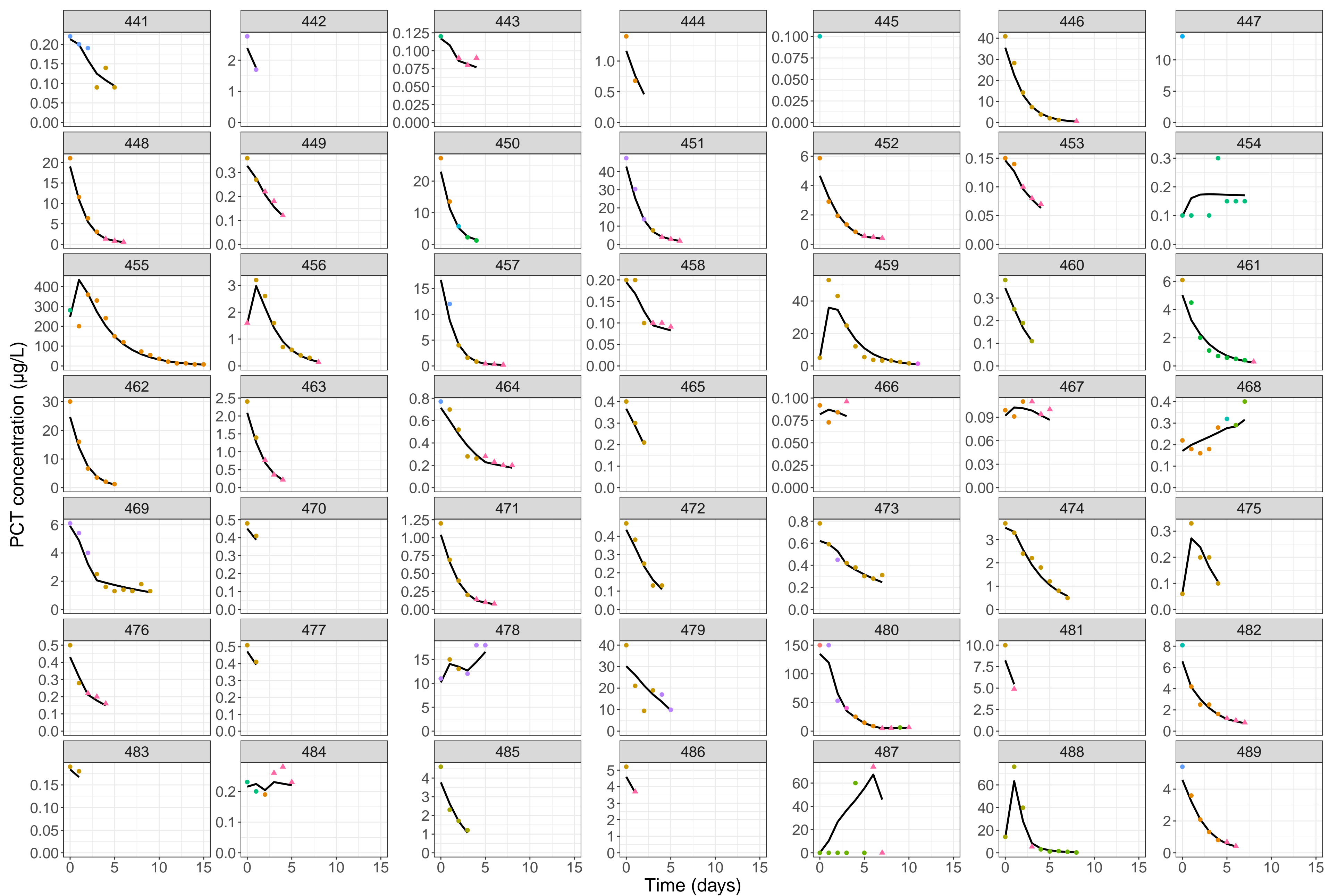


Figure S1. Procalcitonin profiles. Observed procalcitonin profiles (points) and model predictions (solid lines) for all individuals included in the analysis. Colored points indicate different treatments, consisting up to three antibiotics, while triangles indicates observation without any treatment.

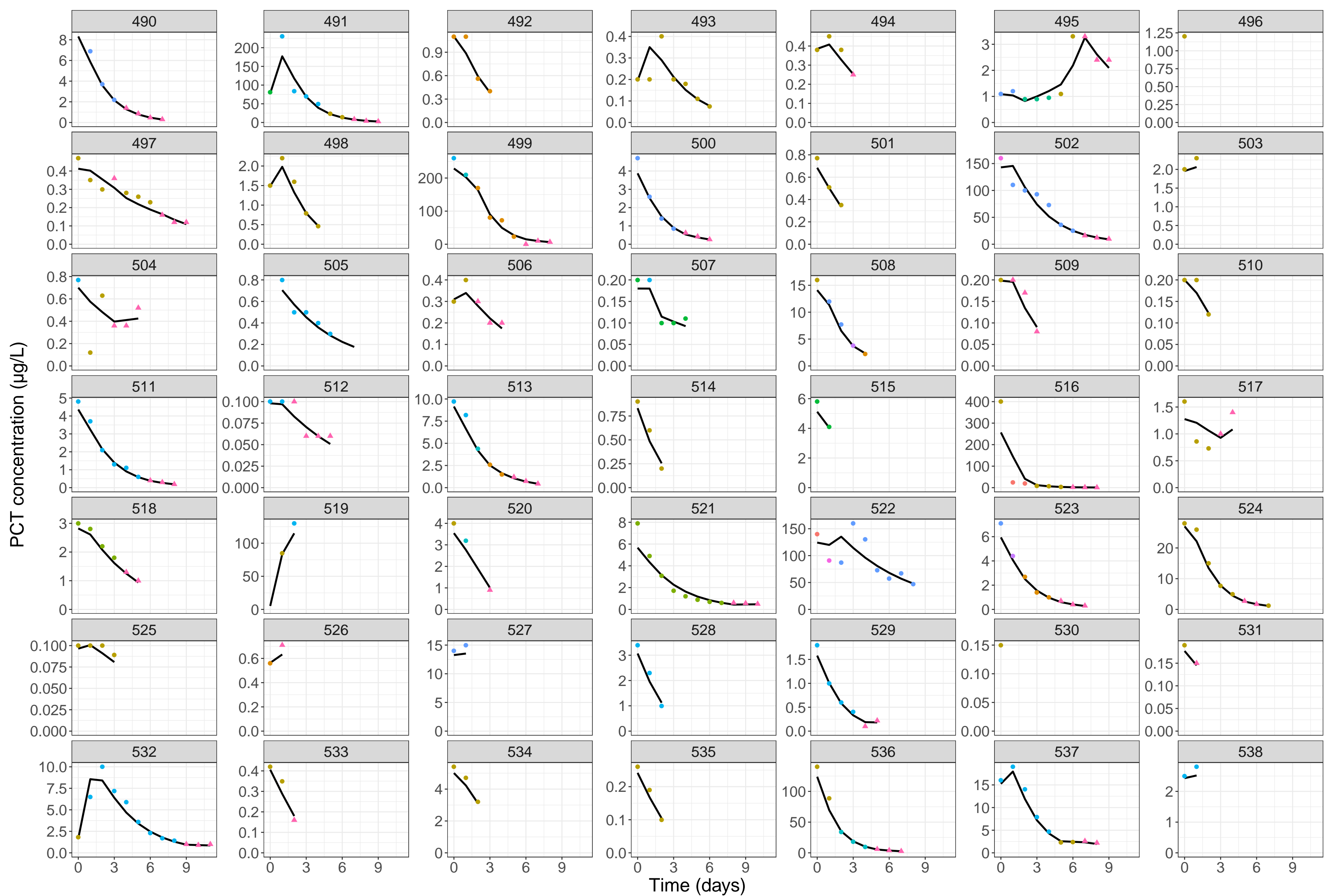


Figure S1. Procalcitonin profiles. Observed procalcitonin profiles (points) and model predictions (solid lines) for all individuals included in the analysis. Colored points indicate different treatments, consisting up to three antibiotics, while triangles indicates observation without any treatment.

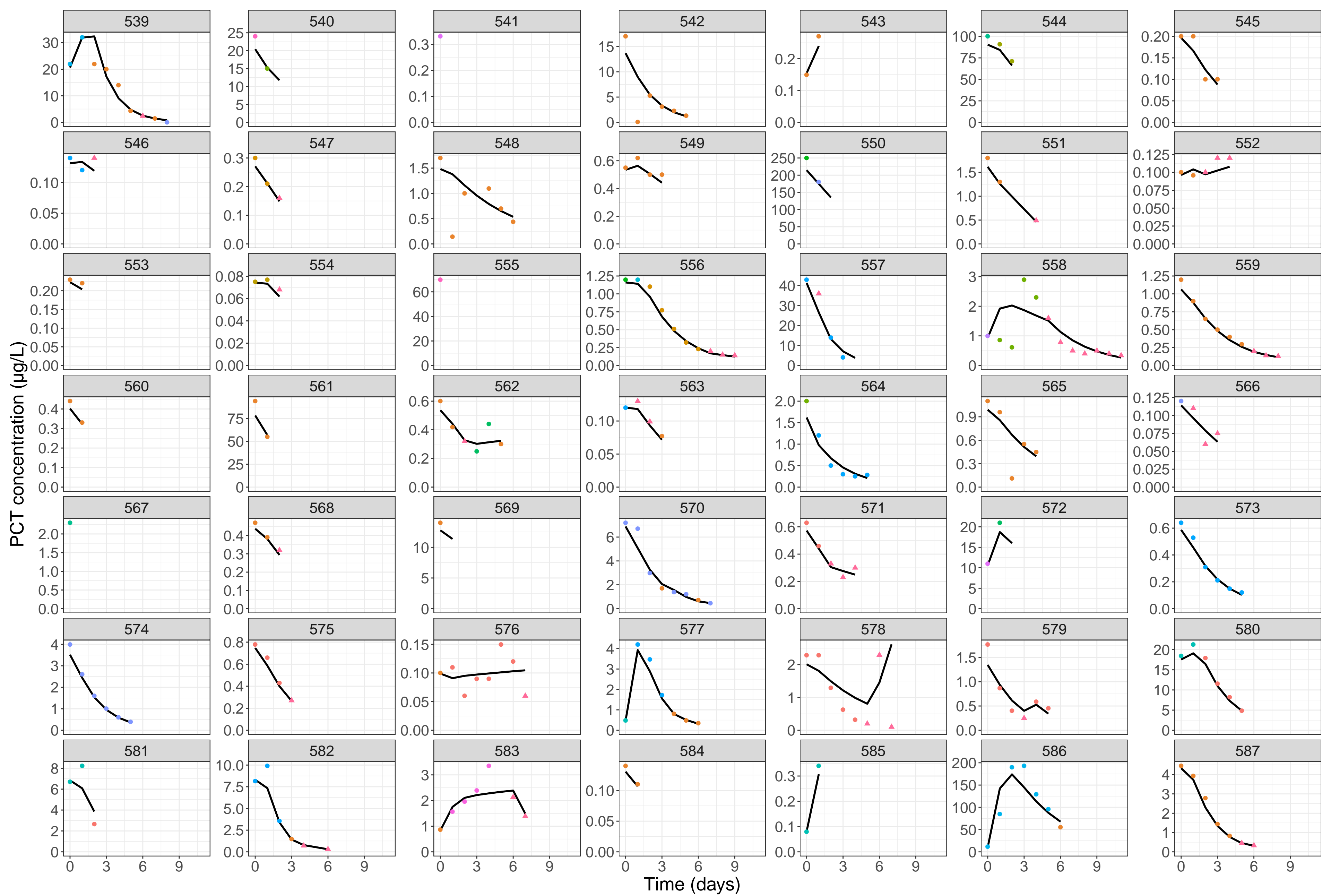


Figure S1. Procalcitonin profiles. Observed procalcitonin profiles (points) and model predictions (solid lines) for all individuals included in the analysis. Colored points indicate different treatments, consisting up to three antibiotics, while triangles indicates observation without any treatment.