

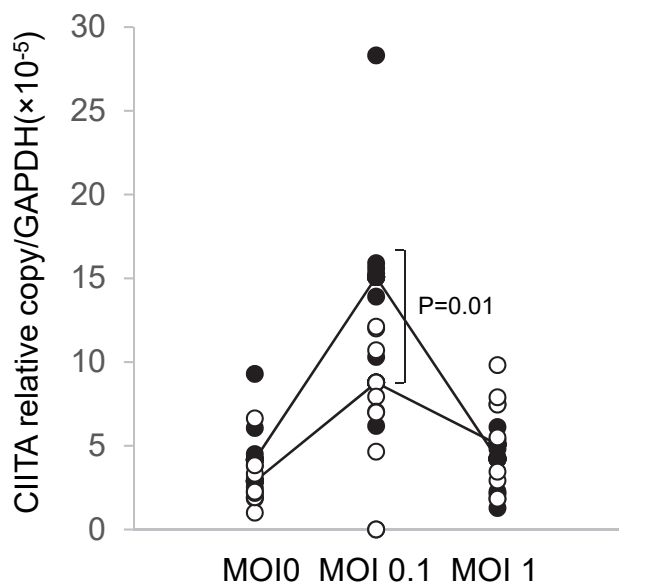
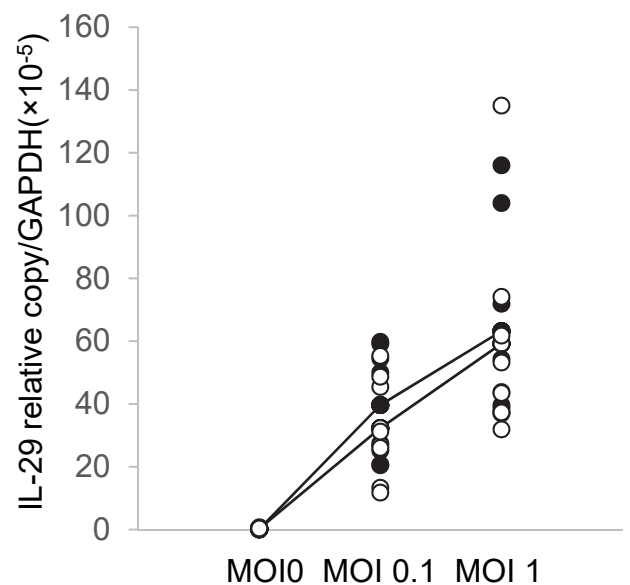
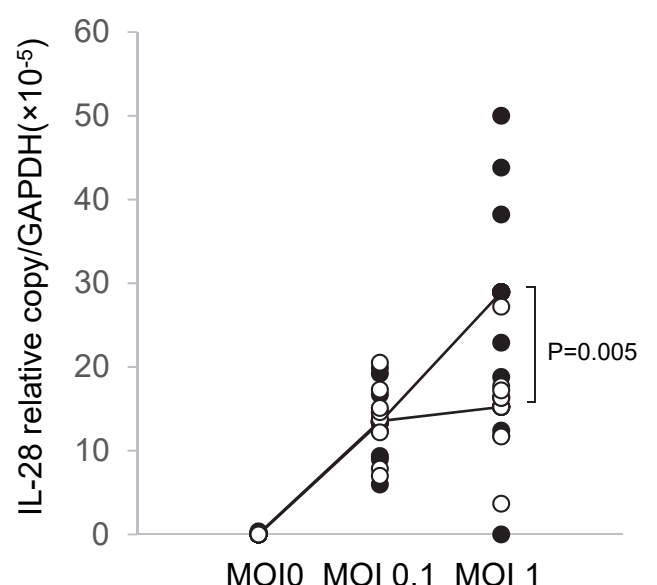
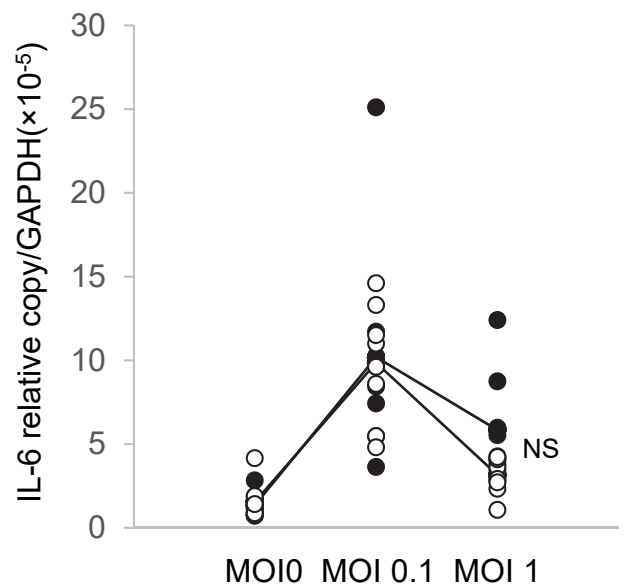
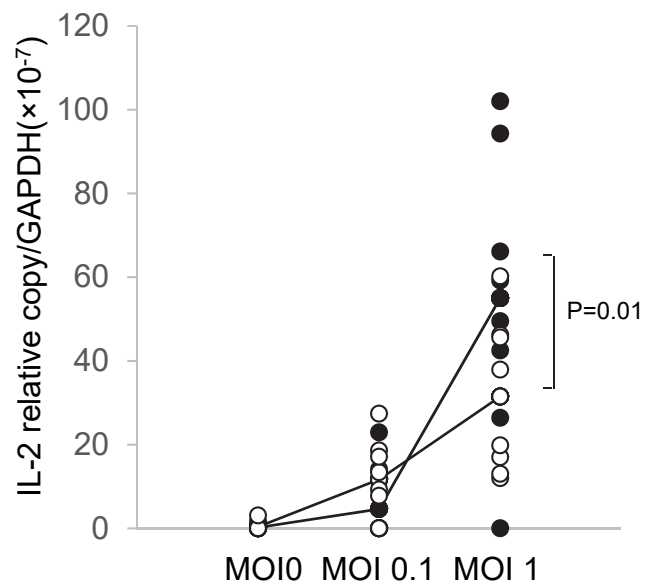
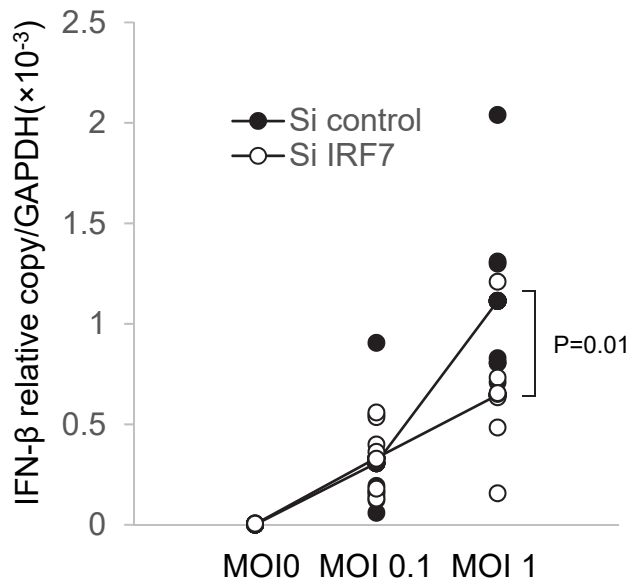
Supplementary Table 1. List of primer pairs

---

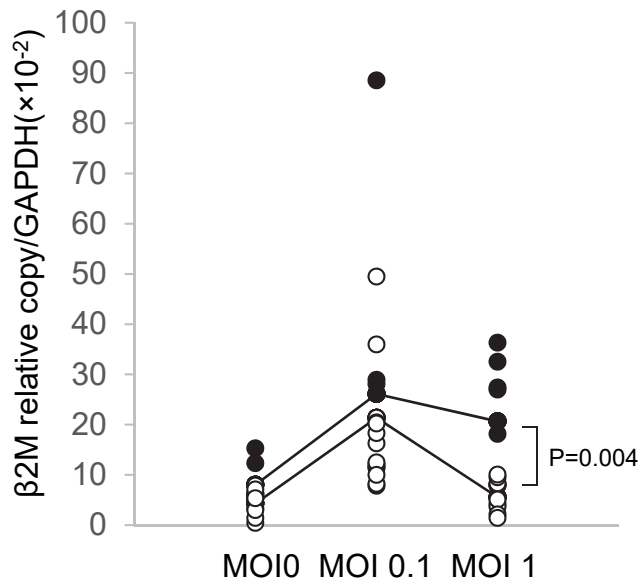
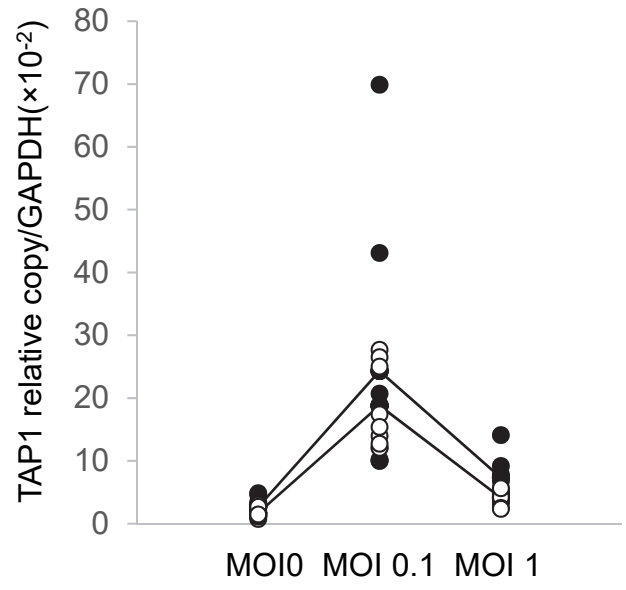
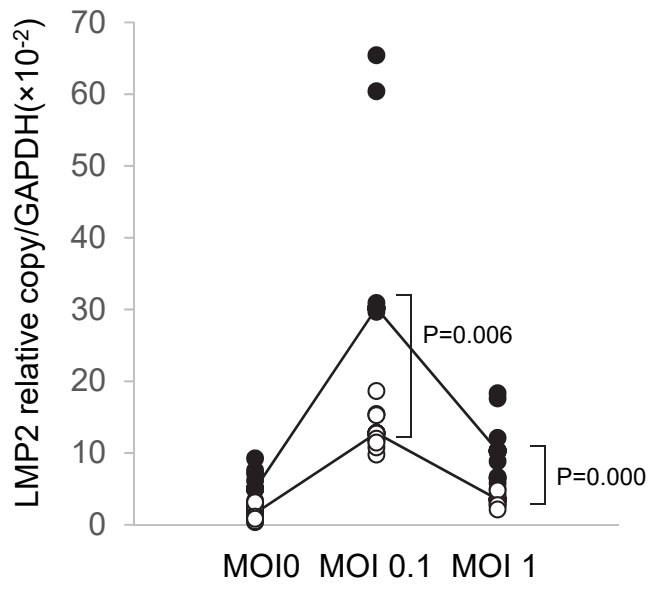
IRF3	forward	ACCAGCCGTGGACCAAGAG
	reverse	TACCAAGGCCCTGAGGCAC
IRF4	forward	GACAACGCCTTACCCTTCG
	reverse	AGGGGTGGCATCATGTAGTT
	probe	UPL #3(Roche:04 685 008 001)
IRF7	forward	TGGTCCTGGTGAAGCTGGAA
	reverse	GATGTCGTCATAGAGGCTGTTGG
CIITA TypeIII	forward	ACGCCCTGCTGGGTCC
	reverse	AACTCCATGGTGGCACACTG
IL-2	forward	AAGAATCCCAAACCTCACCAGGAT
	reverse	TCTAGACACTGAAGATGTTTCAGTTCTG
IL-6	forward	GATGAGTACAAAAGTCCTGATCCA
	reverse	CTGCAGCCACTGGTTCTGT
	probe	UPL #40(Roche:04 687 990 001)
IL-28	forward	AGGGCCAAAGATGCCTTAGA
	reverse	TCCAGAACCTTCAGCGTCAG
IL-29	forward	GGACGCCTTGGAAGAGTCAC

	reverse	AGCTGGGAGAGGATGTGGT
ICP0	forward	AGCGAGTACCCGCCGGCCTG
	reverse	CAGGTCTCGGTCGCAGGGAAC
$\beta$ 2-		
microglobulin	forward	TGCTGTCTCCATGTTTGATGTATCT
	reverse	TCTCTGCTCCCCACCTCTAAGT
LMP2	forward	CGTTGTGATGGGTTCTGATTCC
	reverse	GACAGCTTGTCAAACACTCGGTT
HLA-A	forward	AAAAGGAGGGAGTTACACTCAGG
	reverse	GCTGTGAGGGACACATCAGAG
TAP1	forward	AGGTACTGCTCTCCATCTAC
	reverse	AGTGTAAGGGAGTCAACAGA
IFN- $\beta$	forward	CATTACCTGAAGGCCAAGGA
	reverse	CAATTGTCCAGTCCCAGAGG
GAPDH	forward	AGCCACATCGCTCAGACAC
	reverse	GCCCAATACGACCAAATCC

---



Supplementary Figure 1



Supplementary Figure 2

**Supplementary Figure 1.** Effect of IRF7 inhibition on HSV-1-induced cytokine mRNA panel. HCEn cells were transfected with siRNA of IRF7 or control siRNA and infected with HSV-1. Cytokine mRNA induction was assessed using real-time RT-PCR at 12 h PI. The induction of IFN- $\beta$  and CIITA is significantly reduced by IRF7 inhibition. N = 8, ANOVA Dunnett's test.

**Supplementary Figure 2.** Effect of IRF7 inhibition on mRNA panel of MHC class I antigen presentation. The expression of the mRNA of LMP2, TAP1, and  $\beta$ 2-microglobulin ( $\beta$ 2M) was assessed using real-time RT-PCR at 12 h PI. The mRNA of LMP2 induction was significantly reduced for IRF7  $\Delta$ DBD HCEn. N = 8, ANOVA Dunnett's test.

IRF7

-->



0h

2h

2h

2h

6h

6h

6h

MOI:

0

0

0.1

1

0

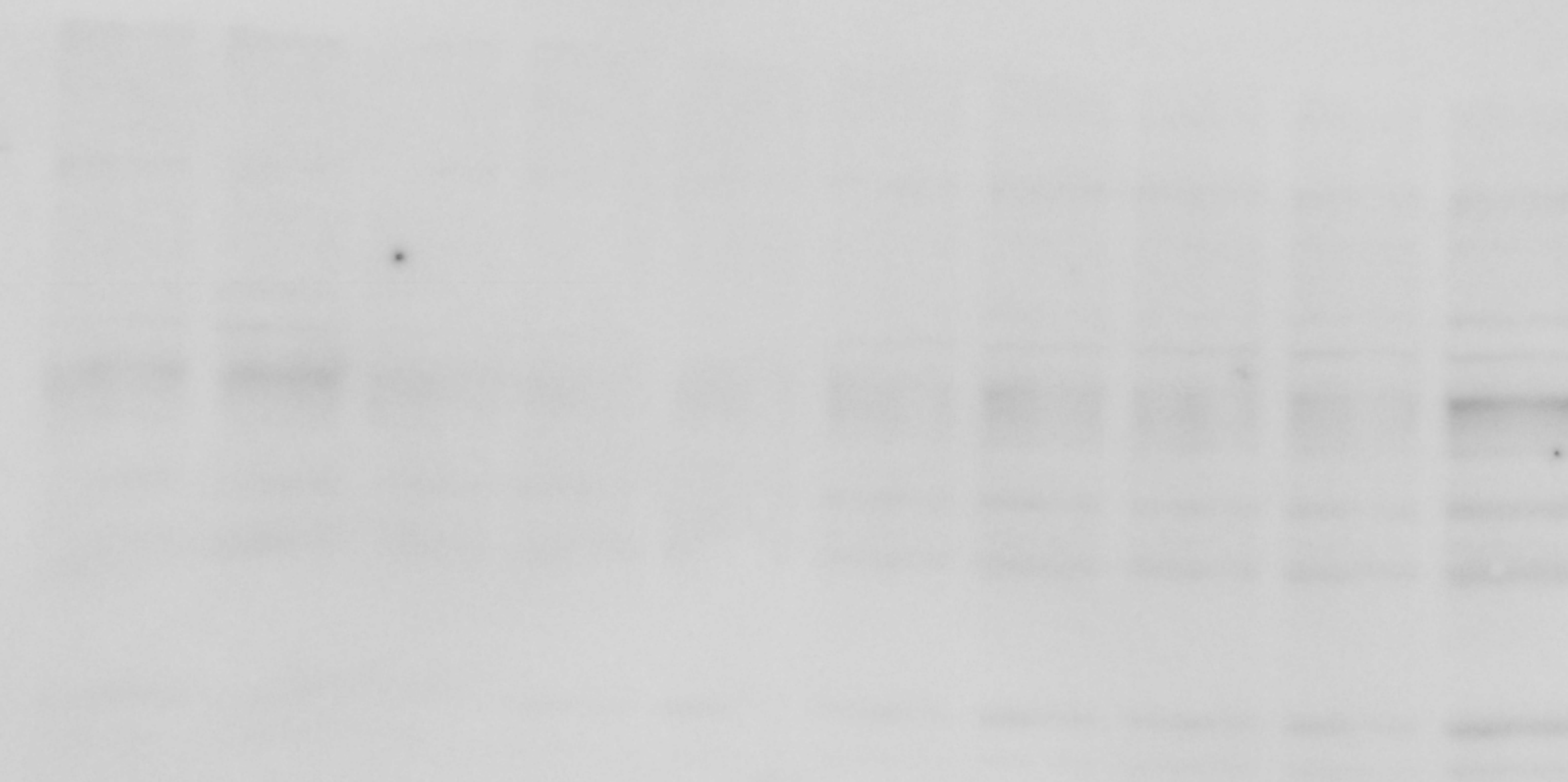
0.1

1

Figure 2b Wild type

IRF7

-->



0h

2h

2h

2h

6h

6h

6h

MOI:

0

0

0.1

1

0

0.1

1

Figure 2b IRF7  $\Delta$ DBD

actin-->



0h

2h

2h

2h

6h

6h

6h

MOI: 0

0

0.1

1

0

0.1

1

Figure 2b IRF7 wild type

actin-->



0h

2h

2h

2h

6h

6h

6h

MOI: 0

0

0.1

1

0

0.1

1

Figure 2b IRF7  $\Delta$ DBD

IRF7-->

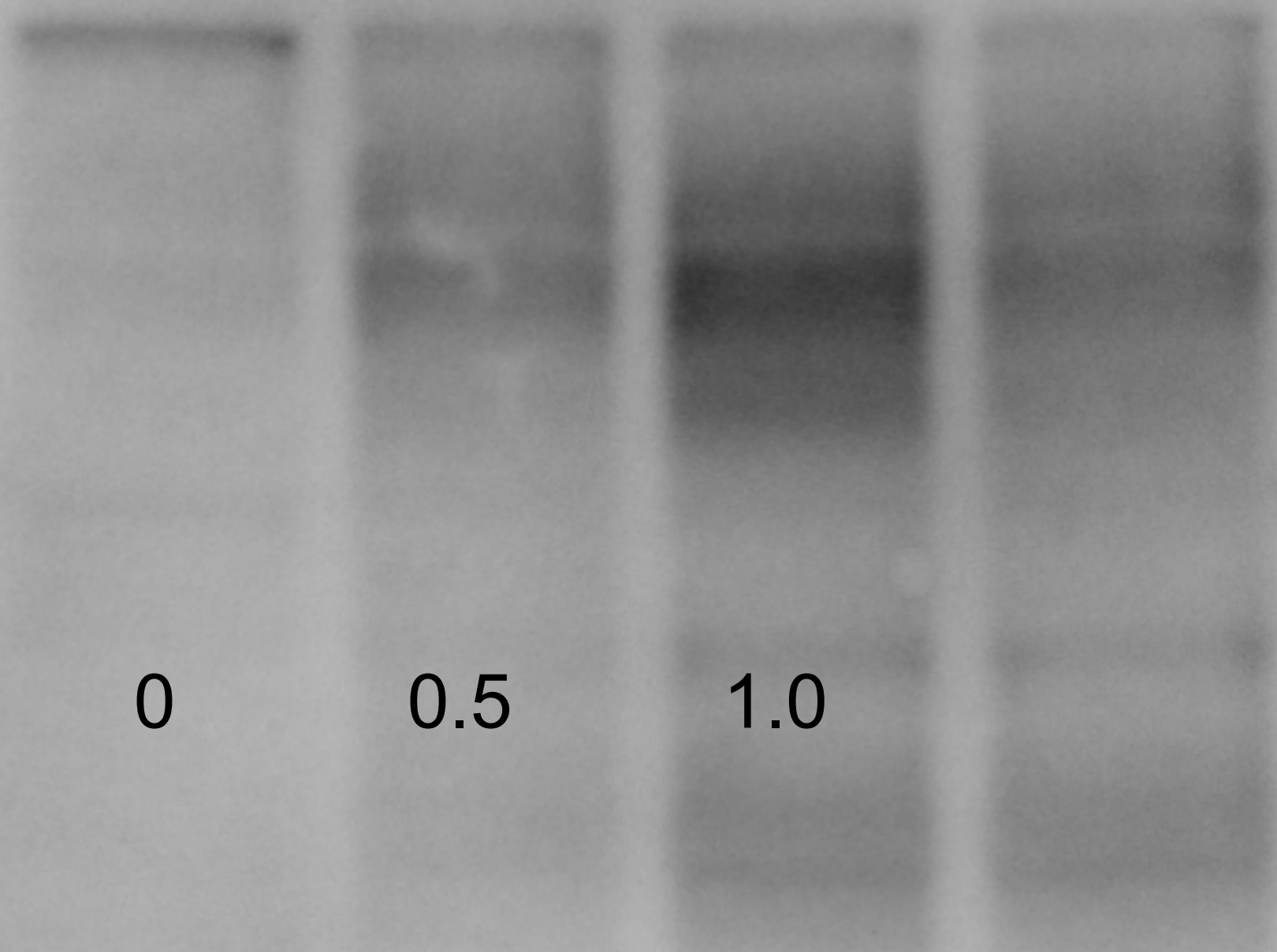
Plasmid

0

0.5

1.0

Figure 2d





actin-->

Plasmid

0

0.5

1.0



Figure 2d