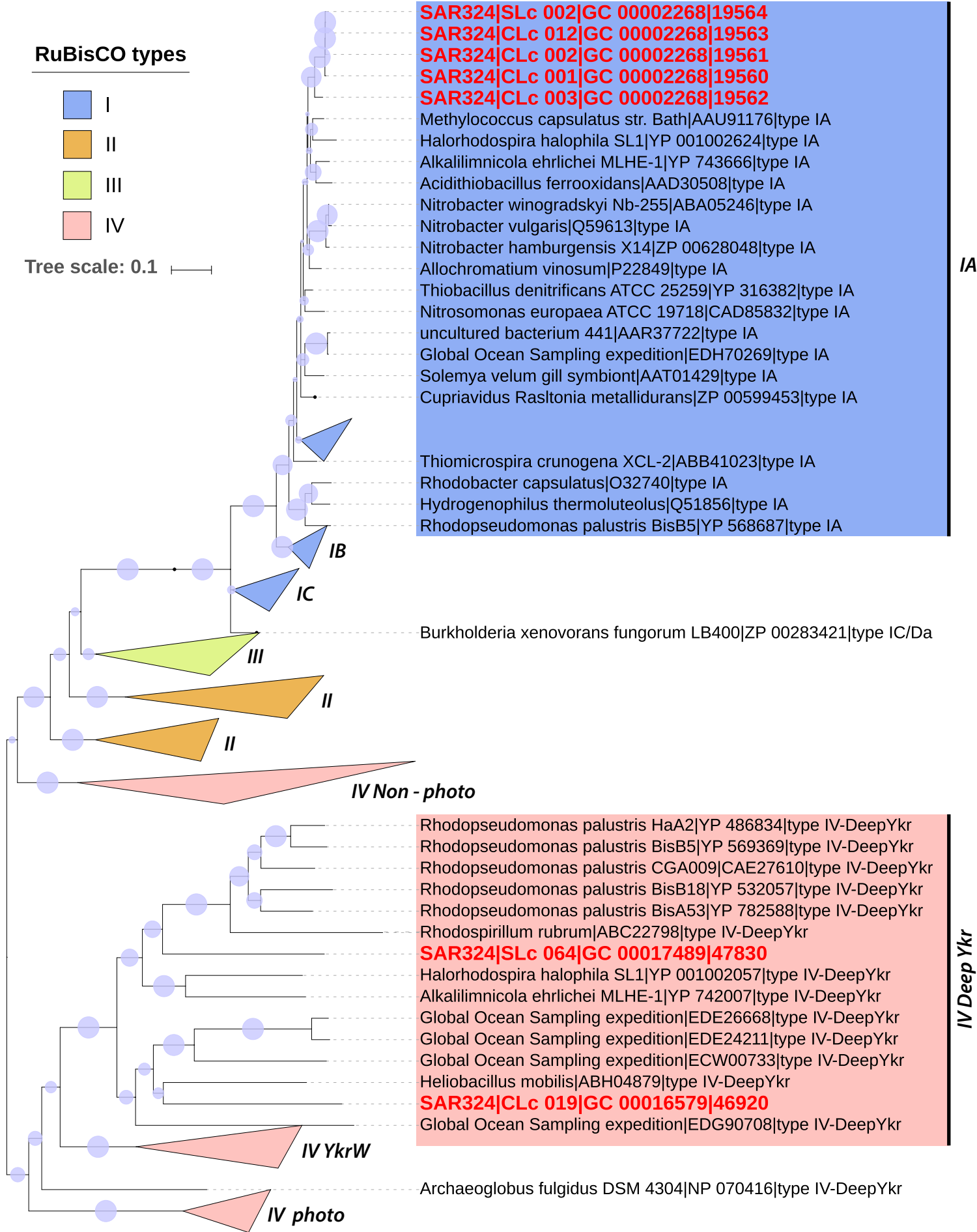


RuBisCO types

- I
- II
- III
- IV

Tree scale: 0.1



SAR324|SLc 002|GC 00002268|19564
SAR324|CLc 012|GC 00002268|19563
SAR324|CLc 002|GC 00002268|19561
SAR324|CLc 001|GC 00002268|19560
SAR324|CLc 003|GC 00002268|19562

Methylococcus capsulatus str. Bath|AAU91176|type IA
 Halorhodospira halophila SL1|YP 001002624|type IA
 Alkalilimnicola ehrlichei MLHE-1|YP 743666|type IA
 Acidithiobacillus ferrooxidans|AAD30508|type IA
 Nitrobacter winogradskyi Nb-255|ABA05246|type IA
 Nitrobacter vulgaris|Q59613|type IA
 Nitrobacter hamburgensis X14|ZP 00628048|type IA
 Allochromatium vinosum|P22849|type IA
 Thiobacillus denitrificans ATCC 25259|YP 316382|type IA
 Nitrosomonas europaea ATCC 19718|CAD85832|type IA
 uncultured bacterium 441|AAR37722|type IA
 Global Ocean Sampling expedition|EDH70269|type IA
 Solemya velum gill symbiont|AAT01429|type IA
 Cupriavidus Rasltonia metallidurans|ZP 00599453|type IA

Thiomicrospira crunogena XCL-2|ABB41023|type IA
 Rhodobacter capsulatus|O32740|type IA
 Hydrogenophilus thermoluteolus|Q51856|type IA
 Rhodopseudomonas palustris BisB5|YP 568687|type IA

Burkholderia xenovorans fungorum LB400|ZP 00283421|type IC/Da

Rhodopseudomonas palustris HaA2|YP 486834|type IV-DeepYkr
 Rhodopseudomonas palustris BisB5|YP 569369|type IV-DeepYkr
 Rhodopseudomonas palustris CGA009|CAE27610|type IV-DeepYkr
 Rhodopseudomonas palustris BisB18|YP 532057|type IV-DeepYkr
 Rhodopseudomonas palustris BisA53|YP 782588|type IV-DeepYkr
 Rhodospirillum rubrum|ABC22798|type IV-DeepYkr
SAR324|SLc 064|GC 00017489|47830
 Halorhodospira halophila SL1|YP 001002057|type IV-DeepYkr
 Alkalilimnicola ehrlichei MLHE-1|YP 742007|type IV-DeepYkr
 Global Ocean Sampling expedition|EDE26668|type IV-DeepYkr
 Global Ocean Sampling expedition|EDE24211|type IV-DeepYkr
 Global Ocean Sampling expedition|ECW00733|type IV-DeepYkr
 Heliobacillus mobilis|ABH04879|type IV-DeepYkr
SAR324|CLc 019|GC 00016579|46920
 Global Ocean Sampling expedition|EDG90708|type IV-DeepYkr

Archaeoglobus fulgidus DSM 4304|NP 070416|type IV-DeepYkr

IA

IV Deep Ykr