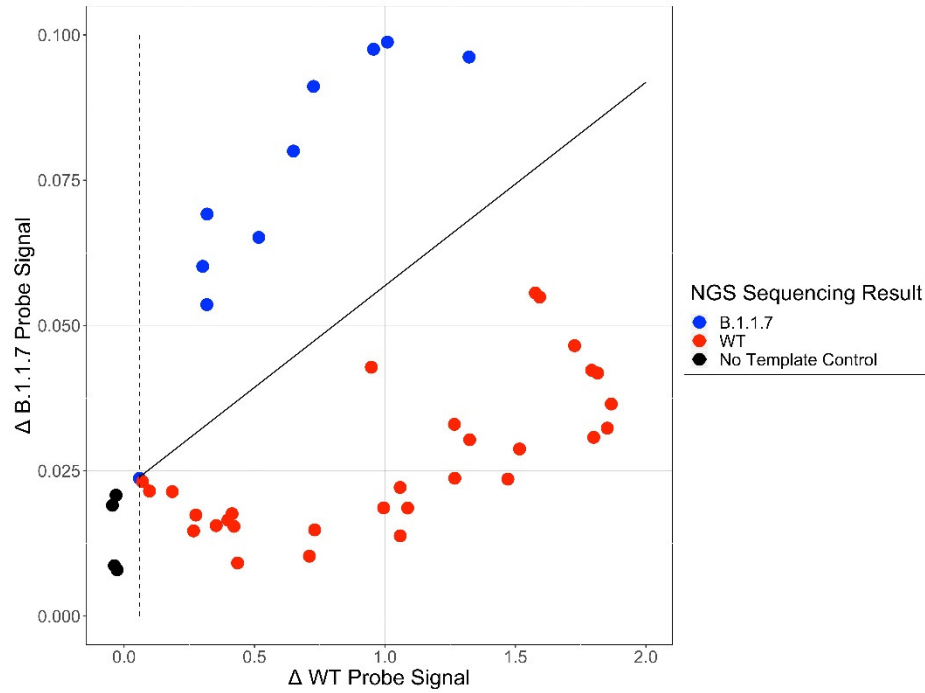
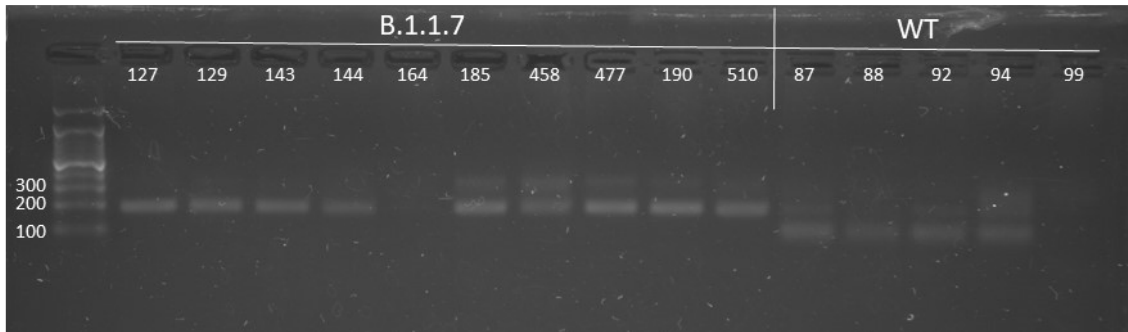


FIGURE S1

A)



B)



A) Hybridization scores of amplified DNA sequences from WT and B.1.1.7 SARS-CoV-2 strains to FAM-WT and TAMRA-B.1.1.7 labelled probes (Table S1; Suppl. Data) for type identification. (B) Representative agarose gel of PCR amplicons cleaved with *SfiI*. The G->C change underlying the D1118H mutation disrupted the *SfiI* restriction site and is uncleaved (199 bp product – left 10 lanes) while the WT is cleaved (~120 bp product – right 5 lanes). Samples 164 and 99 did not produce nested PCR products. Bands running ~550 bp are contaminating first round product; WT sequences may show incomplete digestion.