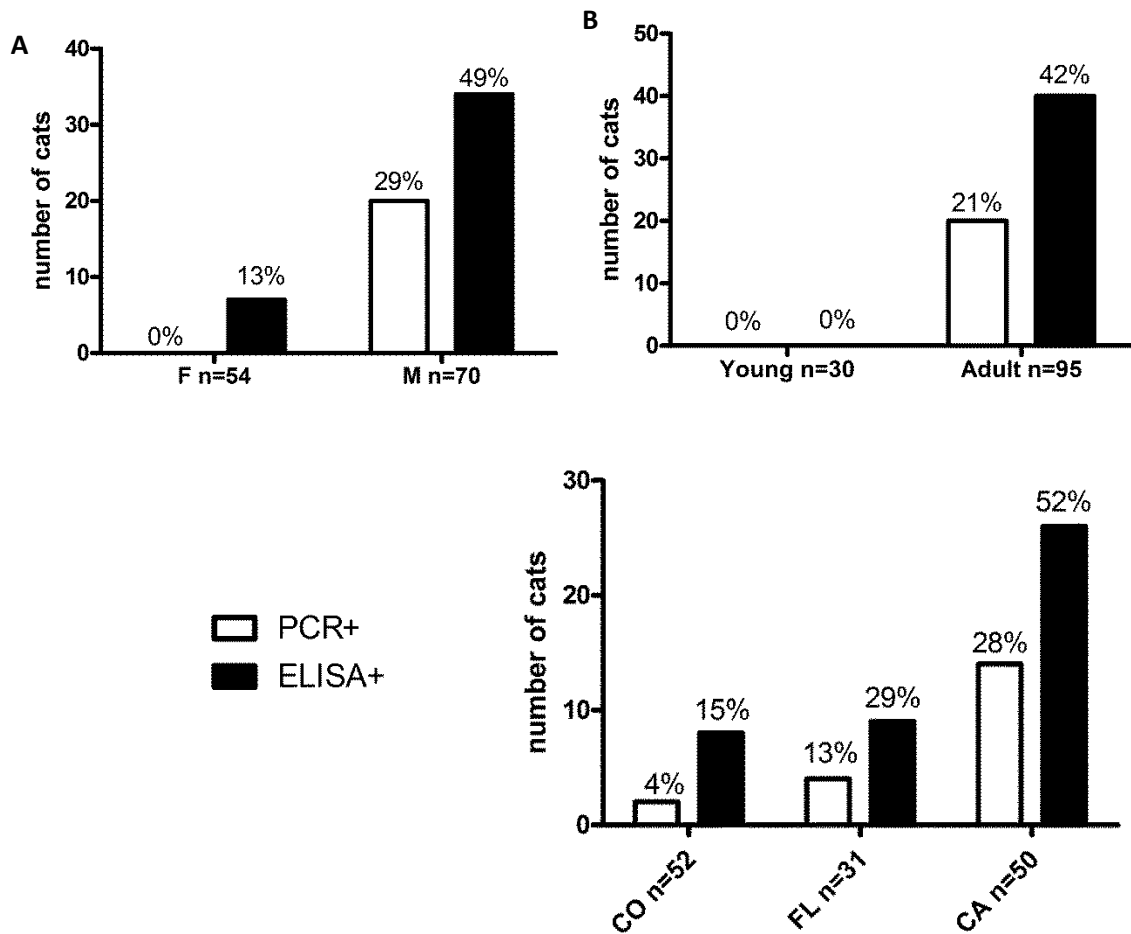


## Supplemental Figures

**Table S1. Primers used for assay development.** Open reading frame (ORF) primers were used to amplify the respective FcaGHV1 genes. The pKH3 primers were used to confirm sequence of plasmid constructs. The restriction sites are underlined. Fwd= forward primer, Rev= reverse primer.

Gene		Primers
pKH3	Fwd	5'- CAACTGCACCTCGGTTCTA -3'
	Rev	5'- CCATTATAAGCTGCAATAAACAAGT -3'
ORF17.5	Fwd	5'- AGACGCTGATCAATGGCCACTAATGCCAG -3'
	Rev	5'- CCTGAATTCCTATTAGTTTTTTAGAAAGTTCTTCACAAAATA -3'
ORF26	Fwd	5'- CGCGGATCCATGCAAGTTGATAAAAAAATCATAGTC -3'
	Rev	5'- CCGGAATTCCTACTAGATGGACAACCAGCCT -3'
ORF38	Fwd	5'- CGCGGATCCATGGGTATCATCTGCTCTATTT -3'
	Rev	5'- CCGGAATTCCTATCAGATACTAAATACAACCTTCTTTTTTATC -3'
ORF42	Fwd	5'- CGCGGATCCATGGACTCTGTAATCCGAACC -3'
	Rev	5'- CCTGAATTCCTATTATGAAAAGATTTGTA CTAGGCTT -3'
ORF52	Fwd	5'- CGCGGATCCATGGCTTCTAAAAAAGGAACACC -3'
	Rev	5'- CCTGAATTCCTATTAGGTTGGTTGTTTGGATCTAC -3'
ORF59	Fwd	5'- CGCGGATCCATGGAAGCTAAAATTACTACTACTA -3'
	Rev	5'- CCGGAATTCCTATTATGTTGTAATCTTGGAATGTTTTG -3'
ORF65	Fwd	5'- CGCGGATCCATGAGTAGGGAACAGTTAAGAG -3'
	Rev	5'- CCGGAATTCCTATTATTTTTTTTTGCTTCCACTAGTTG -3'



**Figure S1. FcaGHV1 ELISA enhances infection detection across geography, sex, and age categories.** A. Assay comparison by sex: male (M) and female (F). Unknown sex not shown: n=9. B. Assay comparison by age. Unknown age not shown: n=8. C. Comparison of assay results by location: Colorado, Florida, and California.