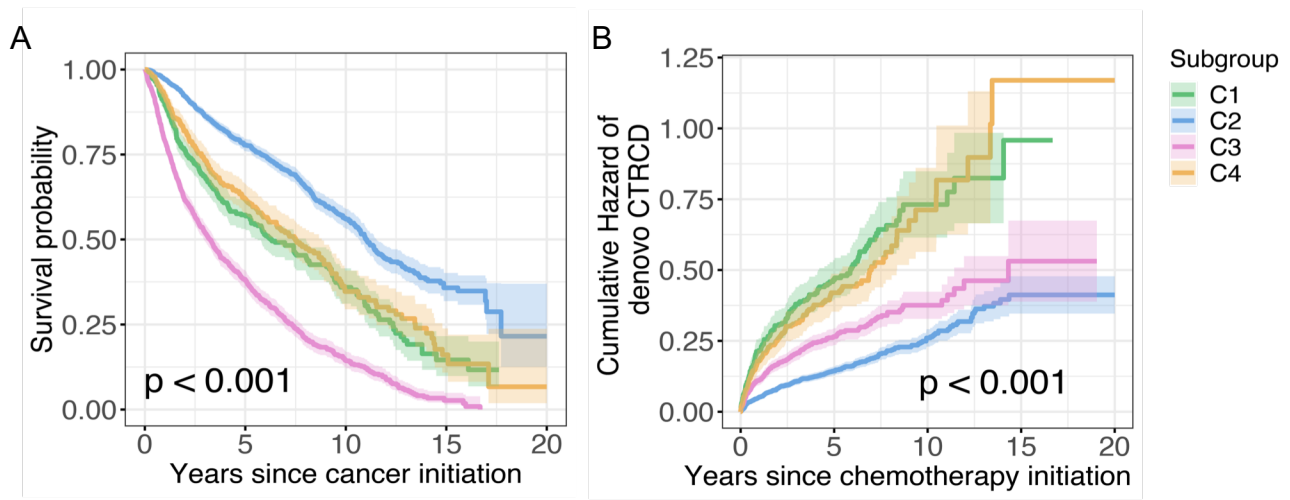


S9 Fig



S9 Fig. Outcome validation for K-means clustering directly on the clinically-derived variables for 4,632 patients. (A) Kaplan-Meier curves to estimate all survival probability across 4 subgroups are shown and (B) Cumulative hazard of *de novo* CTRCD (the patient has at least one type of cardiac event diagnosed after cancer therapy). The log-rank test with the Benjamini & Hochberg (BH) adjustment was used for comparing the cumulative hazard among 4 subgroups. The shadow represents 95% confidence interval.