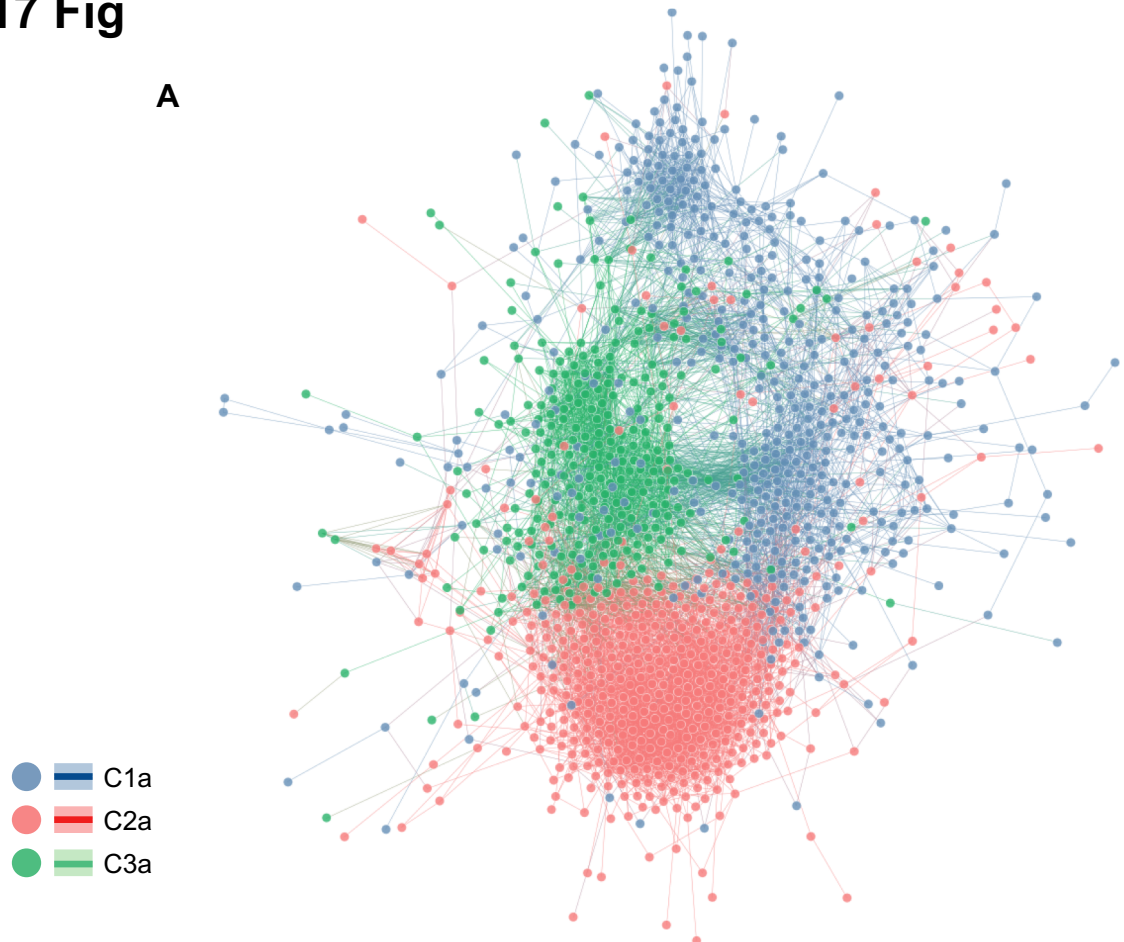
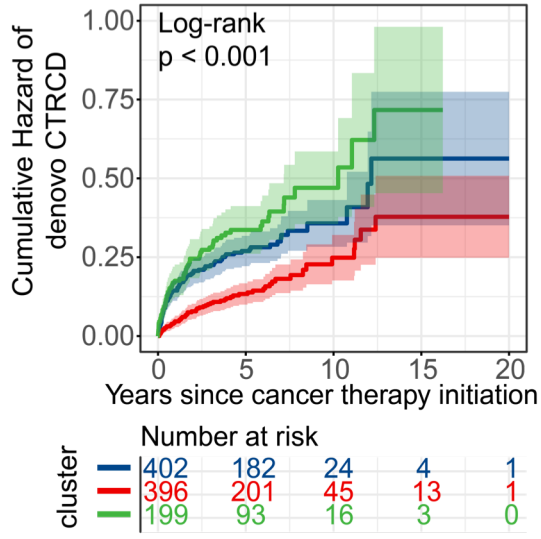


S17 Fig

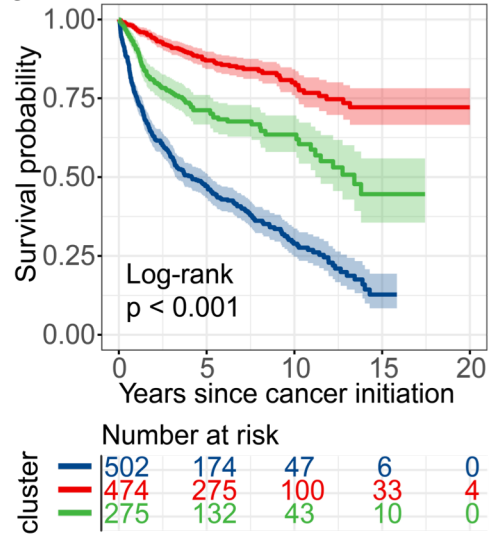
A



B



C



S17 Fig Methodology application in chemotherapy population

(A) Patient-patient network colored by three cluster numbers. Patient-patient network using a sub-population of patients (n=1,252) who received chemotherapy only. Using cosine < 0.55 as a cutoff, 3 clusters were identified: cluster 1a (n=502), cluster 2a (n=474), and cluster 3a (n=275). The network was visualized using Cytoscape v 3.7.1. (B) Cumulative hazard of *de novo* CTRCD in the three subgroups. The Log-rank test were used to evaluate the statistical significance. (C) Kaplan-Meier curves to estimate the all cause survival probability in the three subgroups.