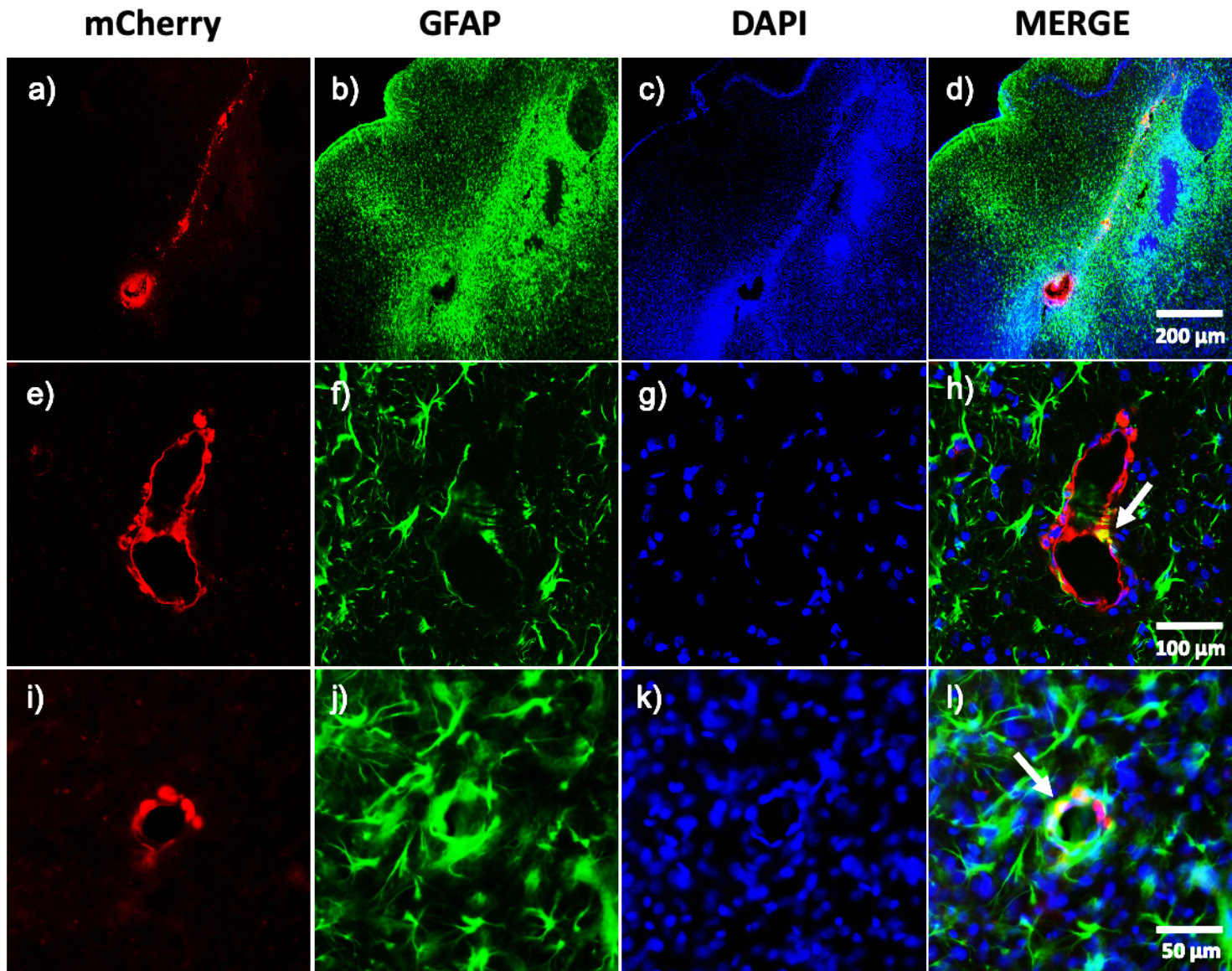


## SUPPLEMENTARY FIGURE 1



**Suppl Fig 1:** mCherry fluorescence was detectable along the track of the needle and around the injection site (a). It was also identified within the wall layer of vascular structures (e) and in cells around blood vessels (i). Panels b,f and j show, at different magnification, GFAP positive cells (astrocytes). Panels c,g and k show, at different magnification, fluorescence for DAPI (cellular nuclei). Panels d, h and l show the contemporary expression of mCherry, GFAP and DAPI on some astrocytes (white arrows).