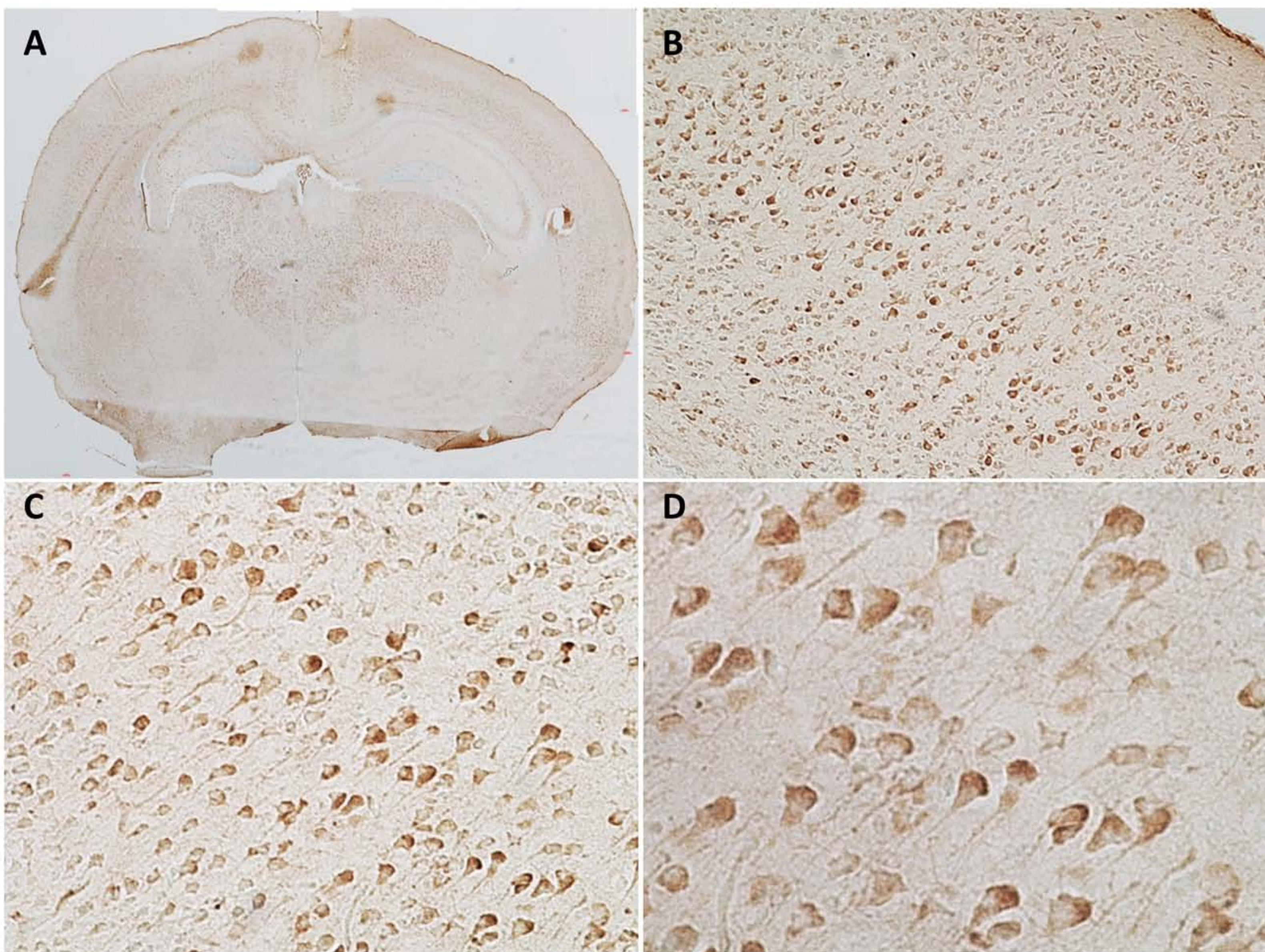


Supplementary Figure



Supplementary Figure: Expression of Cyp46a1 protein in P9 mouse brain
Coronal brain sections were stained with immunohistochemistry using anti-Cyp46a1 antibody. The positive signals demonstrated its expression in neurons in the cortex, hippocampus and thalamus (A). In the cortex, Cyp46a1 was primarily localized in the large pyramidal neurons in layers V, VI, and layers II, III (B). Higher magnification revealed the strong signals in the soma and dendrites (C, D).