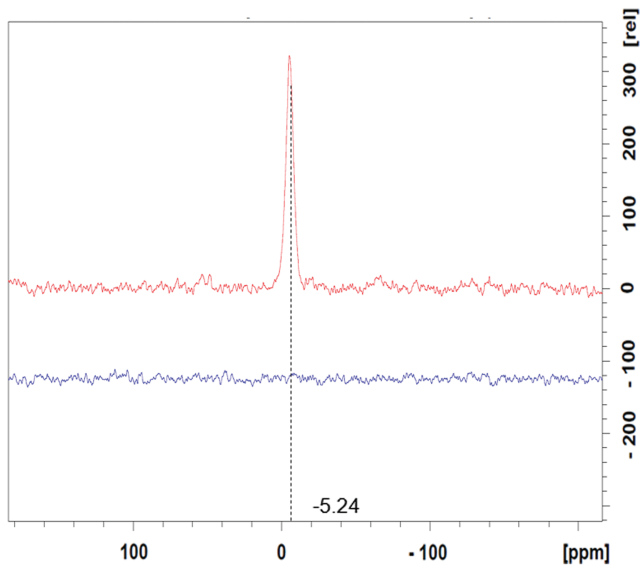
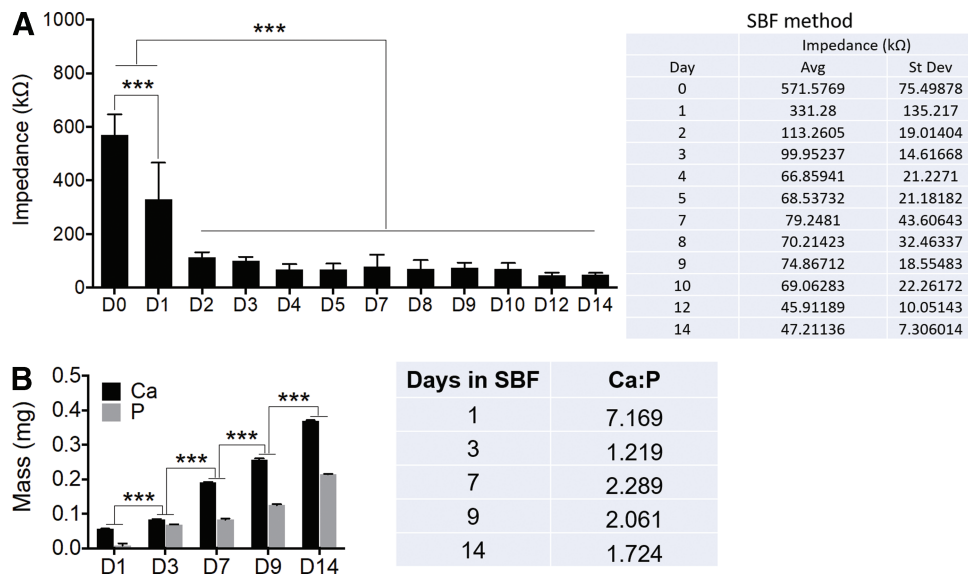


## Supplementary Data



**SUPPLEMENTARY FIG. S1.** ssNMR:  $^{31}\text{P}$  CPMAS spectra of 10% GelMA constructs (bottom) and fully mineralized cell-laden GelMA hydrogels (top). GelMA, gelatin methacrylate.



**SUPPLEMENTARY FIG. S2.** mSBF incubation trail additional data. **(A)** Impedance measurements of incubated 10% GelMA samples across 14 days **(B)** Ratio of Ca:P detected through ICP-MS (Inductively coupled plasma mass spectrometry) across representative incubation days. \*\*\* $p < 0.001$ .