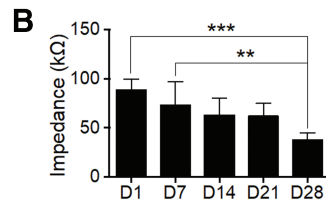


Day	kPa (avg)	kPa (St Dev)
1	9.950	2.358
7	10.191	5.671
14	12.978	4.768
21	19.982	0.725
28	25.094	0.467



Day	kΩ (avg)	kΩ (St Dev)
1	96.494	2.558
7	90.786	2.114
14	68.536	1.796
21	65.577	1.389
28	39.015	2.063

**SUPPLEMENTARY FIG. S3.** Cell-laden mineralized samples additional data. **(A)** Compressive modulus of mineralized samples across incubation period. Note the statistically significant difference which occurs after 3 and 4 weeks. **(B)** Impedance measurements of osteogenically mineralized 10% GelMA samples across representative incubation days. \* $p < 0.05$ , \*\* $p < 0.01$ , \*\*\* $p < 0.001$ .