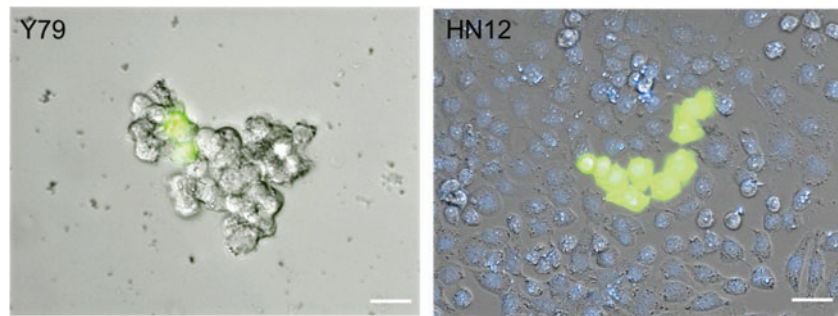


## Supplementary Data



**SUPPLEMENTARY FIG. S1.** Transfection of Y79 retinoblastoma and HN12 head and neck cancer cells with G4/NLS/*pGFP* (1:120:1). Scale bar: 20  $\mu\text{m}$ . G4, generation 4; NLS, nuclear-localization sequence peptide; *pGFP*, plasmid green fluorescent protein.