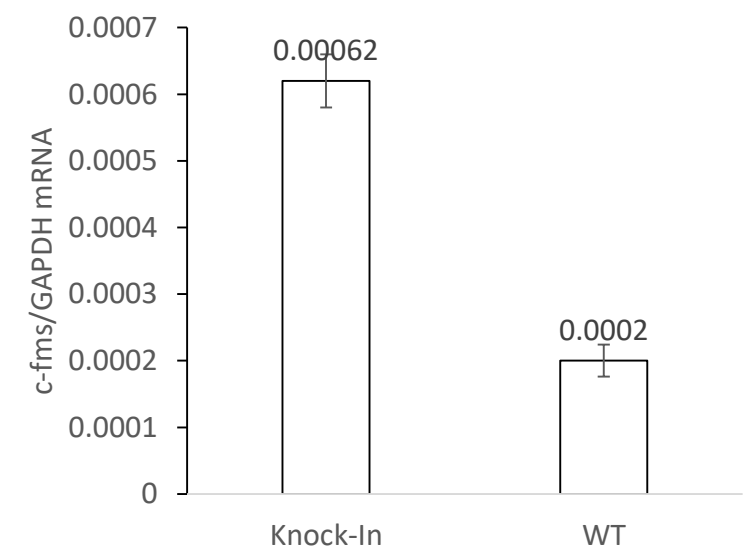
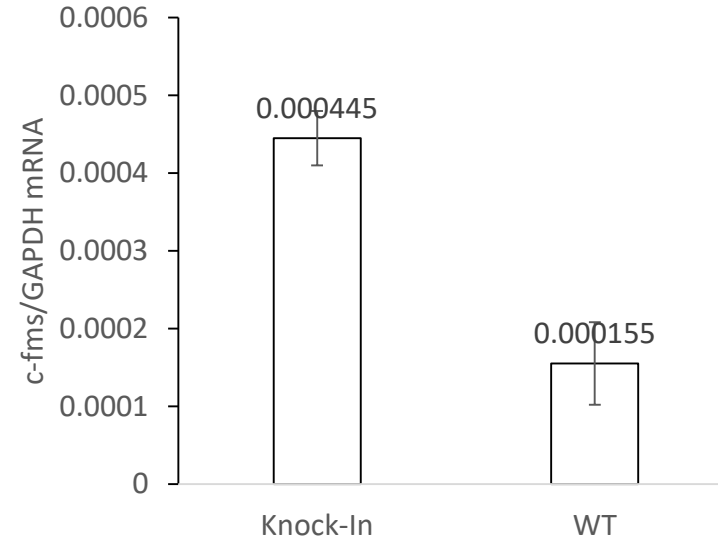
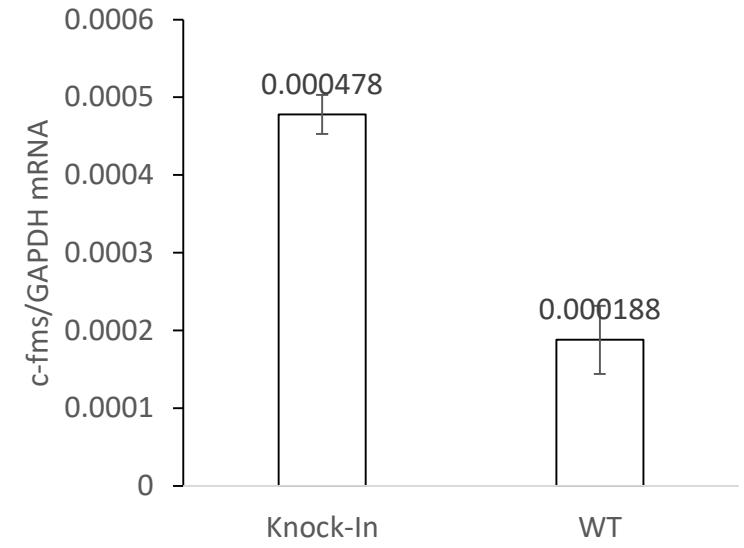
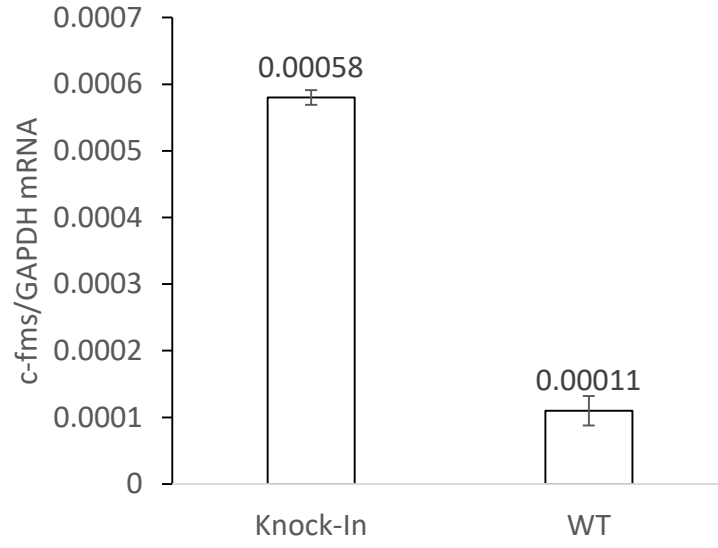
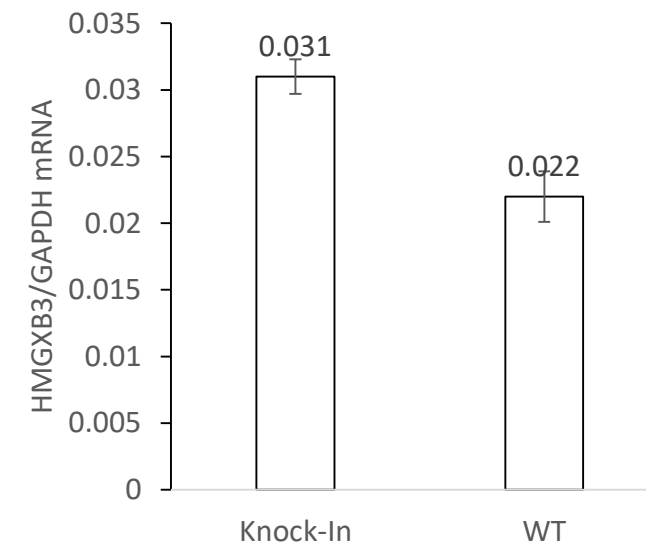
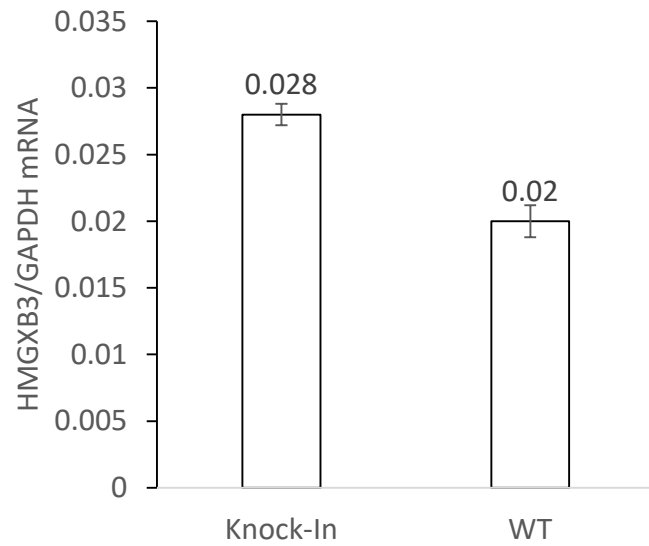
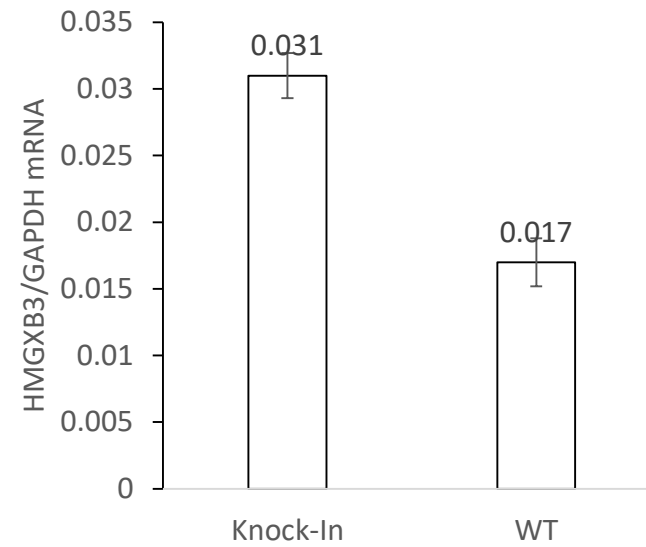
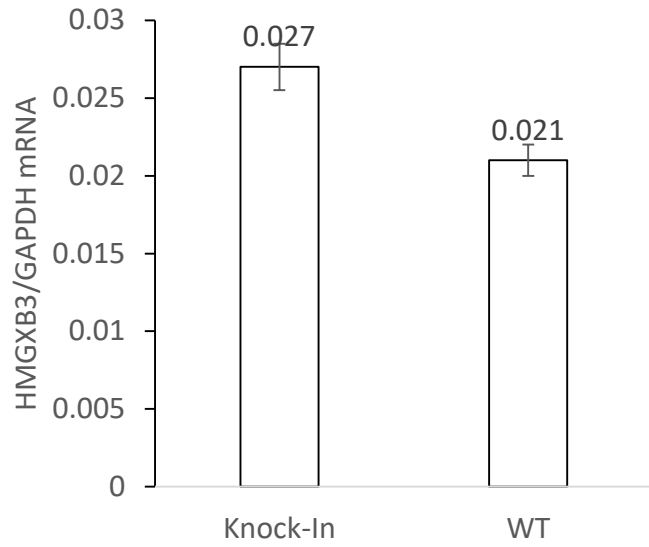


(A) Insertion of SV40-PA is confirmed by genome sequencing.



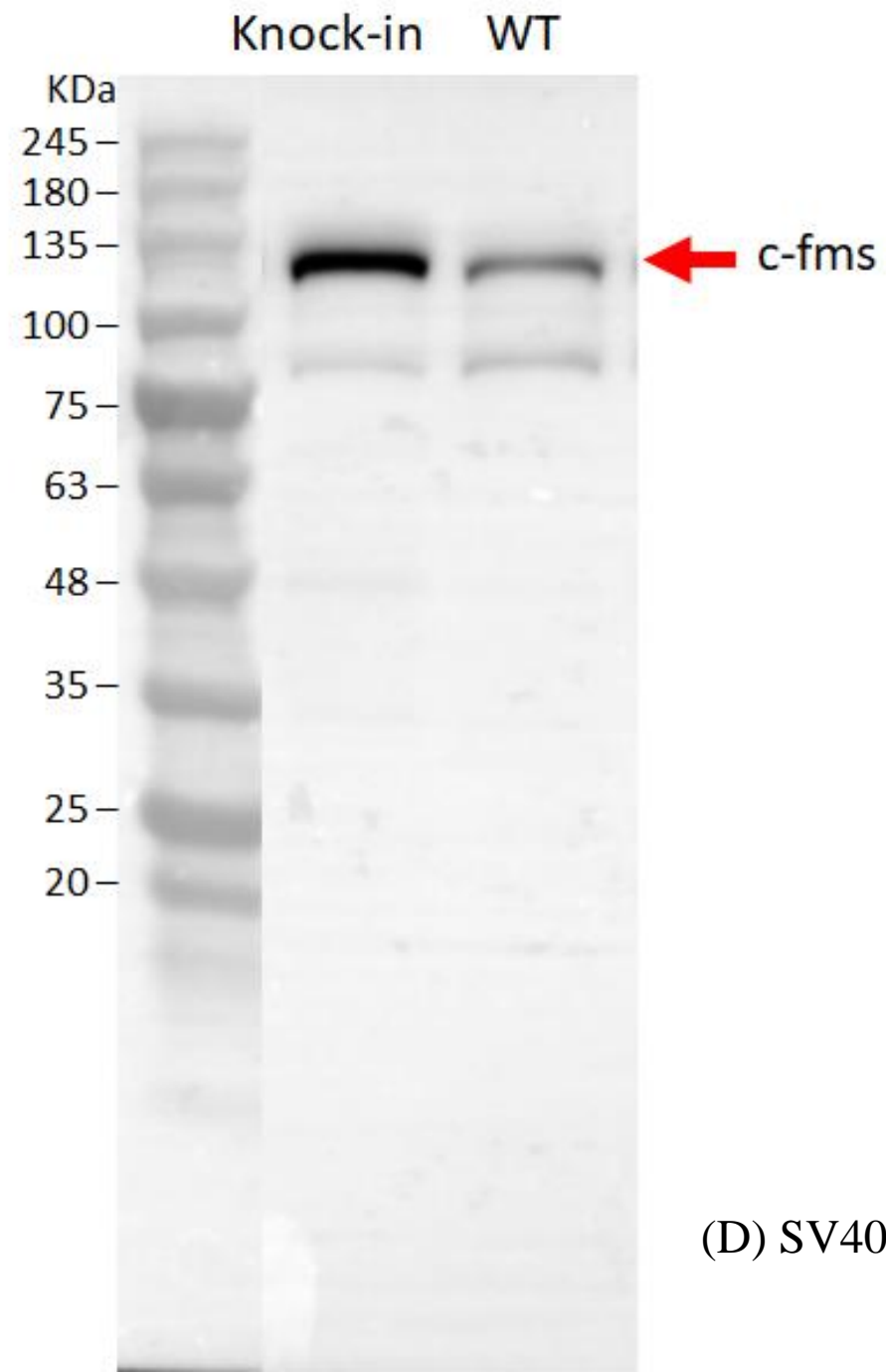
(B) SV40-PA knock-in increases *c-fms* mRNA.

Four independent experiments were performed, and the average and standard deviation is presented.

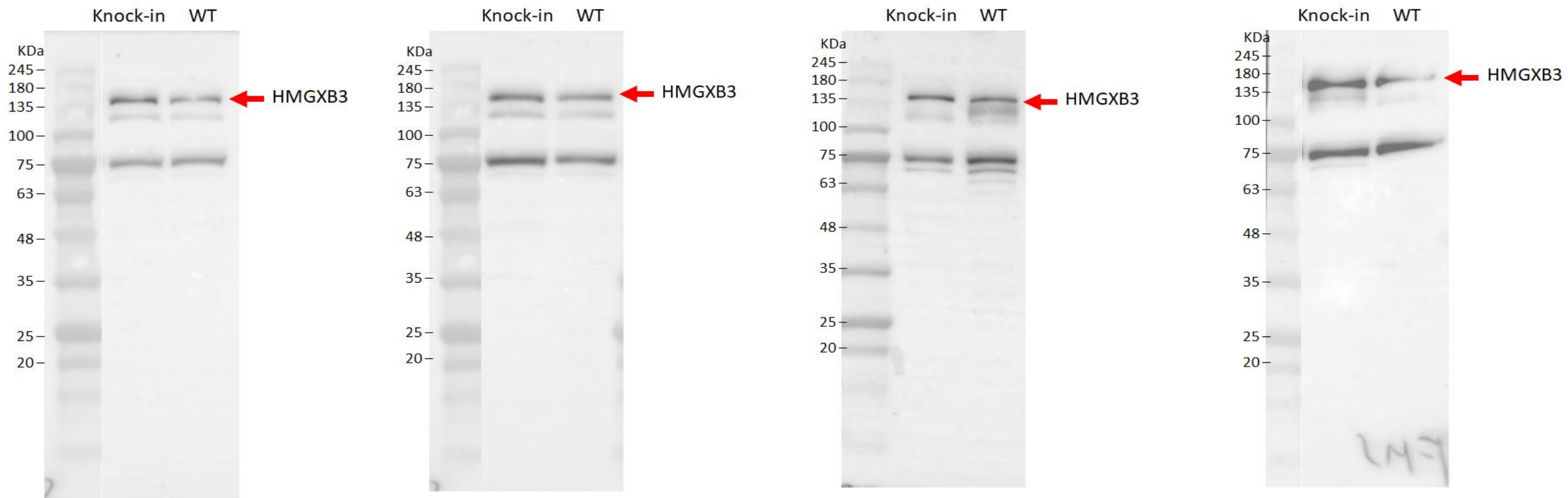


(C) SV40-PA knock-in increases *HMGXB3* mRNA.

Four independent experiments were performed, and the average and standard deviation is presented.



(D) SV40-PA knock-in increases *c-fms* protein.



(E) SV40-PA knock-in increases *HMGXB3* protein. n=4