

# An Immune Cell Infiltration-Related Gene Signature Predicts Prognosis for Bladder Cancer

Hualin Chen<sup>1</sup>, Yang Pan<sup>1</sup>, Xiaoxiang Jin<sup>1</sup>, Gang Chen<sup>1\*</sup>

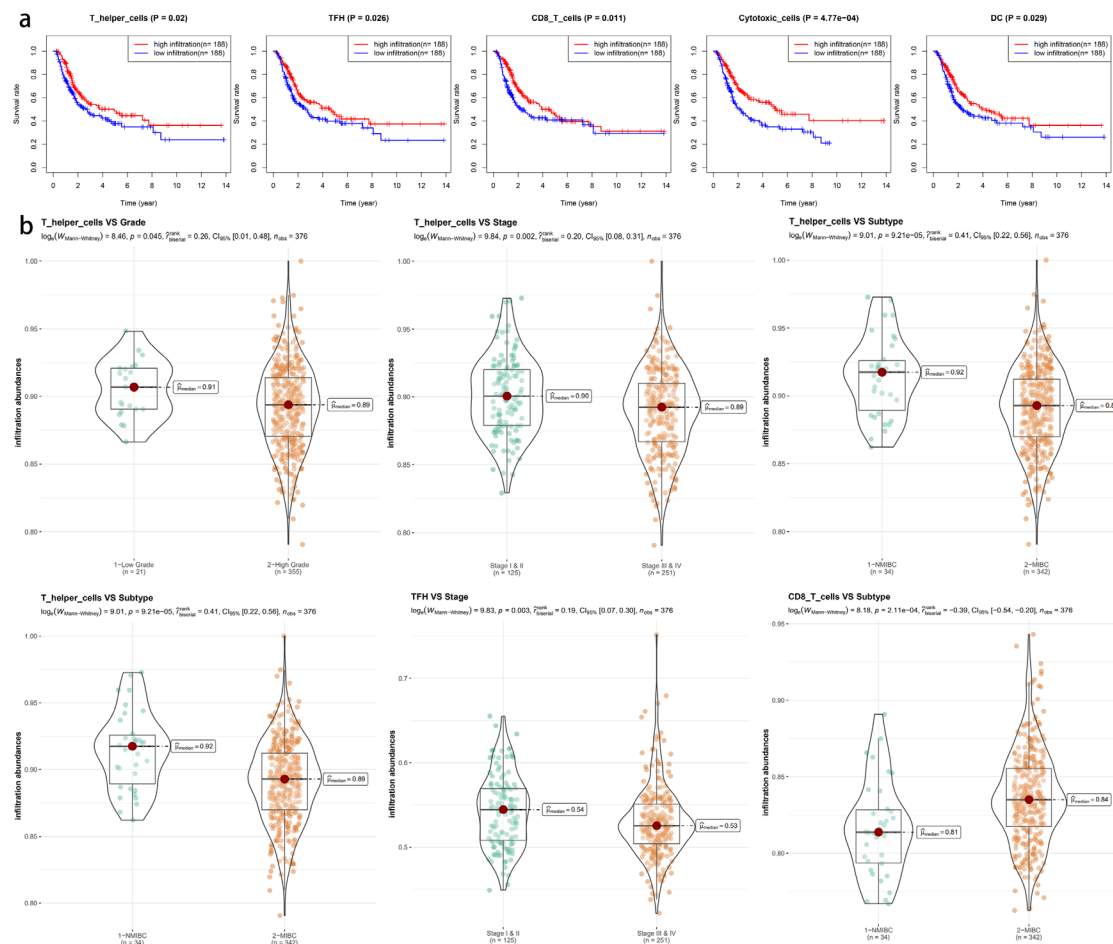
1 Department of Urology, The First Affiliated Hospital of Chongqing Medical University, Chongqing, China

\* Correspondence:

Gang Chen

chengang2308@163.com

+86-13668039053



Supplementary Figure 1

Relationships between the five prognostic immune cells and clinicopathological variables. **(a)** KM survival analysis with log-rank test demonstrated the distinct prognosis in different infiltration levels of the five cells. **(b)** Relationship analysis with Mann-Whitney U test between the prognostic immune cells and clinicopathological factors. Only statistically significant results were plotted.