

An Immune Cell Infiltration-Related Gene Signature Predicts Prognosis for Bladder Cancer

Hualin Chen¹, Yang Pan¹, Xiaoxiang Jin¹, Gang Chen^{1*}

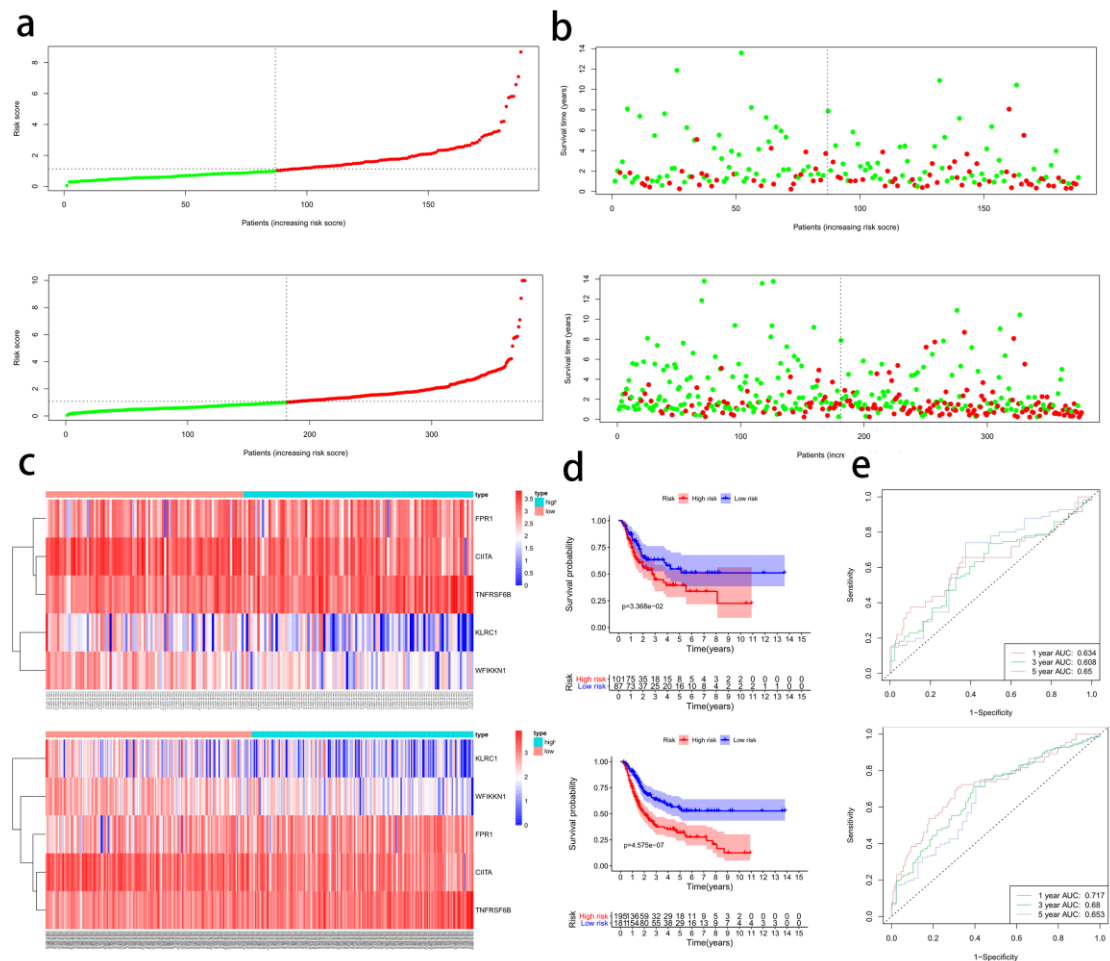
¹ Department of Urology, The First Affiliated Hospital of Chongqing Medical University, Chongqing, China

* **Correspondence:**

Gang Chen

chengang2308@163.com

+86-13668039053



Supplementary Figure 2

Evaluation of the prognosis prediction power of the five PIRMGs signature in the testing and entire cohorts. **(a)** Distribution of risk score. **(b)** Survival status of BCa patients. **(c)** The expression profiles of the five PIRMGs. **(d)** KM survival analysis of the high- and low-risk groups. **(e)** Time-dependent ROC curve of the signature. In each

panel, the upper and lower images correspond to the training and entire cohorts, respectively.