

An Immune Cell Infiltration-Related Gene Signature Predicts Prognosis for Bladder Cancer

Hualin Chen¹, Yang Pan¹, Xiaoxiang Jin¹, Gang Chen^{1*}

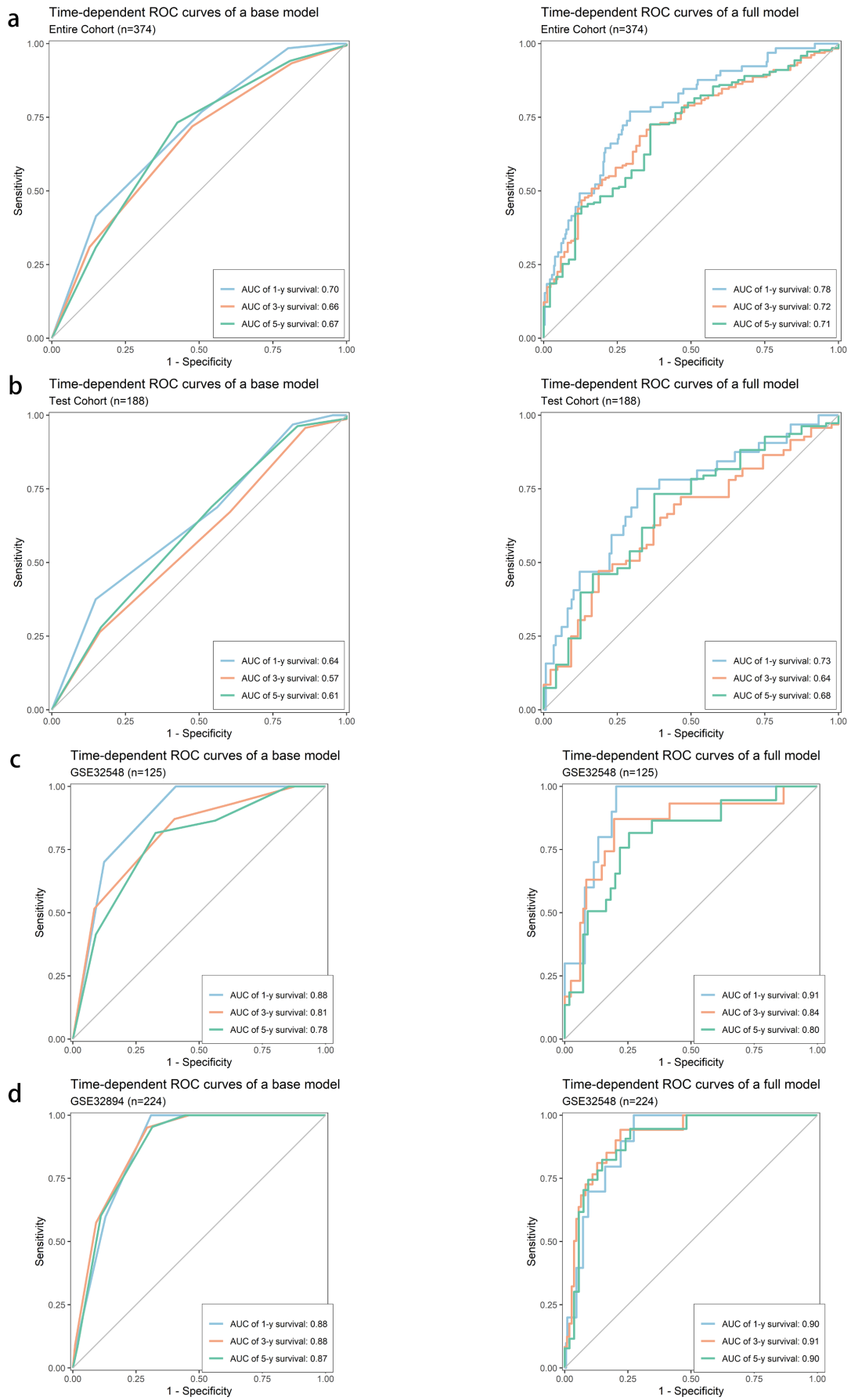
1 Department of Urology, The First Affiliated Hospital of Chongqing Medical University, Chongqing, China

*** Correspondence:**

Gang Chen

chengang2308@163.com

+86-13668039053



Supplementary Figure 3

Time-dependent ROC curves of a full model (left panel) and a base model (right panel) in the prediction of prognosis at 1-, 3-, and 5-year time points of (a) entire cohort, (b) test cohort, (c) GSE32548 and (d) GSE32894. The full model composed of signature and clinical variables including age, stage and grade. While the base model only composed of clinical variables.