

Product datasheet

HRP Anti-beta Actin antibody [AC-15] ab49900

★★★★★ 10 Abreviews 255 References 3 Images

Overview

Product name	HRP Anti-beta Actin antibody [AC-15]
Description	HRP Mouse monoclonal [AC-15] to beta Actin
Host species	Mouse
Conjugation	HRP
Tested applications	Suitable for: WB
Species reactivity	<p>Reacts with: Mouse, Rat, Cow, Dog, Human, African green monkey</p> <p>Predicted to work with: a wide range of other species ▲ Does not react with: Drosophila melanogaster, Dictyostelium discoideum</p>
Immunogen	<p>Synthetic peptide corresponding to beta Actin (N terminal) conjugated to keyhole limpet haemocyanin.</p> <p>Sequence:</p> <p>DDIAALVIDNGSGK</p> <p style="text-align: right;"> Run BLAST with Run BLAST with </p>
Positive control	NIH 3T3 whole cell lysate (ab7179) can be used as a positive control in WB. Chicken gizzard tissue cryosections. Human foreskin fibroblasts. Chicken fibroblasts. Rat dorsal root ganglion and Rat liver lysates
General notes	<p>The Life Science industry has been in the grips of a reproducibility crisis for a number of years. Abcam is leading the way in addressing this with our range of recombinant monoclonal antibodies and knockout edited cell lines for gold-standard validation. Please check that this product meets your needs before purchasing.</p> <p>If you have any questions, special requirements or concerns, please send us an inquiry and/or contact our Support team ahead of purchase. Recommended alternatives for this product can be found below, along with publications, customer reviews and Q&As</p>

Properties

Form	Liquid
Storage instructions	Shipped at 4°C. Store at +4°C.
Storage buffer	<p>pH: 7.40</p> <p>Preservative: 0.01% Thimerosal (merthiolate)</p> <p>Constituent: 0.0268% PBS</p>

Purity	Protein A purified
Clonality	Monoclonal
Clone number	AC-15
Isotype	IgG1

Applications

The Abpromise guarantee Our [Abpromise guarantee](#) covers the use of ab49900 in the following tested applications.

The application notes include recommended starting dilutions; optimal dilutions/concentrations should be determined by the end user.

Application	Abreviews	Notes
WB	★★★★★ (10)	1/25000 - 1/50000. Predicted molecular weight: 42 kDa.

Target

Function Actins are highly conserved proteins that are involved in various types of cell motility and are ubiquitously expressed in all eukaryotic cells.

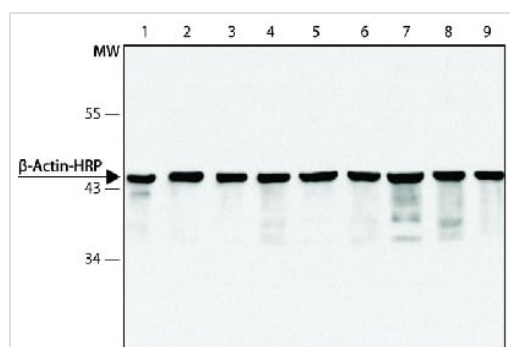
Involvement in disease Defects in ACTB are a cause of dystonia juvenile-onset (DYTJ) [MIM:607371]. DYTJ is a form of dystonia with juvenile onset. Dystonia is defined by the presence of sustained involuntary muscle contraction, often leading to abnormal postures. DYTJ patients manifest progressive, generalized, dopa-unresponsive dystonia, developmental malformations and sensory hearing loss.

Sequence similarities Belongs to the actin family.

Post-translational modifications ISGylated.

Cellular localization Cytoplasm > cytoskeleton. Localized in cytoplasmic mRNP granules containing untranslated mRNAs.

Images



Western blot - HRP Anti-beta Actin antibody [AC-15] (ab49900)

All lanes : HRP Anti-beta Actin antibody [AC-15] (ab49900) at 1/50000 dilution

Lane 1 : A549 Lysate

Lane 2 : HeLa Lysate

Lane 3 : 3T3 Lysate

Lane 4 : NRK Lysate

Lane 5 : MDCK Lysate

Lane 6 : MDBK Lysate

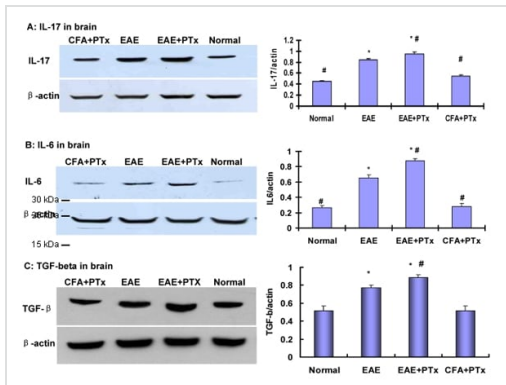
Lane 7 : BHK Lysate

Lane 8 : COS7 Lysate

Lane 9 : CFB Lysate

Developed using the ECL technique.

Predicted band size: 42 kDa

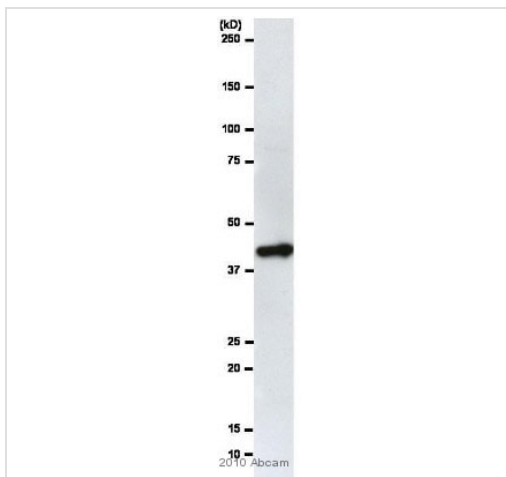


Western blot - HRP Anti-beta Actin antibody [AC-15] (ab49900)

Image from PLoS One. 2010 Aug 25;5(8):e12400. Fig 8, doi: 10.1371/journal.pone.0012400. Reproduced under the Creative Commons license <http://creativecommons.org/licenses/by/4.0/>

Proteins were loaded onto a 10% SDS-polyacrylamide gel. After gel electrophoresis, blots were subsequently probed with primary antibodies anti-IL-6 at 1:1000 (ab6672), anti-IL-17 at 1:3000, anti-TGF-β at 1:1000 (ab66043). For detection, horseradish peroxidase-conjugated secondary anti-rabbit antibody was used followed by enhanced chemiluminescence development.

Normalization of results was ensured by running parallel western blots with β-actin antibody at 1:25,000 (ab49900). The optical density was quantified using an image densitometer. The data are presented as a percentage of target protein relative to β-actin. A value of $p < 0.05$ is considered significant.



Western blot - HRP Anti-beta Actin antibody [AC-15] (ab49900)

This image is courtesy of an anonymous Abreview

HRP Anti-beta Actin antibody [AC-15] (ab49900) at 1/25000 dilution + Whole cell lysate of Human acute monocytic leukemia THP-1. at 10 μg

Developed using the ECL technique.

Performed under reducing conditions.

Predicted band size: 42 kDa

Blocking Step: 5% Milk for 1 hour at 22°C.

Please note: All products are "FOR RESEARCH USE ONLY. NOT FOR USE IN DIAGNOSTIC PROCEDURES"

Our Abpromise to you: Quality guaranteed and expert technical support

- Replacement or refund for products not performing as stated on the datasheet
- Valid for 12 months from date of delivery
- Response to your inquiry within 24 hours
- We provide support in Chinese, English, French, German, Japanese and Spanish

- Extensive multi-media technical resources to help you
- We investigate all quality concerns to ensure our products perform to the highest standards

If the product does not perform as described on this datasheet, we will offer a refund or replacement. For full details of the Abpromise, please visit <https://www.abcam.com/abpromise> or contact our technical team.

Terms and conditions

- Guarantee only valid for products bought direct from Abcam or one of our authorized distributors