

Human Embryonic Kidney Cells (HEK-293T) Expressing Human Angiotensin-Converting Enzyme 2, HEK-293T-hACE2 Cell Line

Catalog No. NR-52511

Product Description:

NR-52511 contains a preparation of human (*Homo sapiens*) embryonic kidney cells (HEK-293T) constitutively expressing human angiotensin-converting enzyme 2 (ACE2). The HEK-293T-hACE2 cell line was created by transducing HEK-293T cells with lentiviral vector expressing ACE2 under the control of human elongation factor 1a (EF1a) promoter.

Lot: 70035460

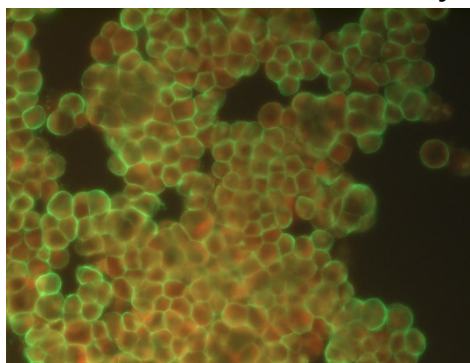
Manufacturing Date: 08MAY2020

TEST	SPECIFICATIONS	RESULTS
Growth Properties	Adherent	Adherent
Morphology	Epithelial	Epithelial
Confirmation of ACE2 Expression by Indirect Fluorescent Antibody Assay¹	Fluorescence observed	Fluorescence observed (Figure 1)
Multiplex PCR Amplification of Cytochrome C Oxidase I (COI) Gene	Human origin No evidence of another species	Human origin No evidence of another species
Total Cell Count	> 1.0 × 10 ⁶ cells per vial	6.22 × 10 ⁶ cells per vial
Post-Freeze Viability	≥ 50%	89.2%
Sterility (21-day incubation) Harpo's HTYE broth, 37°C and 26°C, aerobic ² Trypticase Soy broth, 37°C and 26°C, aerobic Sabouraud broth, 37°C and 26°C, aerobic Sheep blood agar, 37°C, aerobic Sheep blood agar, 37°C, anaerobic Thioglycollate broth, 37°C, anaerobic DMEM with 10% FBS, 37°C, aerobic	No growth No growth No growth No growth No growth No growth No growth	No growth No growth No growth No growth No growth No growth No growth
Mycoplasma Contamination Hoechst DNA stain Agar and broth culture (14-day incubation at 37°C) DNA detection by PCR of extracted Test Article nucleic acid	None detected None detected None detected	None detected None detected None detected

¹Using ACE2 mouse monoclonal antibody (Proteintech®, 66699-1-Ig)

²Atlas, Ronald M. *Handbook of Microbiological Media*. 3rd ed. Ed. Lawrence C. Parks. Boca Raton: CRC Press, 2004, p. 798.

Figure 1: Indirect Fluorescent Antibody Assay



/Heather Couch/

Heather Couch

17 AUG 2020

Program Manager or designee, ATCC Federal Solutions

ATCC®, on behalf of BEI Resources, hereby represents and warrants that the material provided under this certificate has been subjected to the tests and procedures specified and that the results described, along with any other data provided in this certificate, are true and accurate to the best of ATCC®'s knowledge.

ATCC® is a trademark of the American Type Culture Collection.

You are authorized to use this product for research use only. It is not intended for human use.

