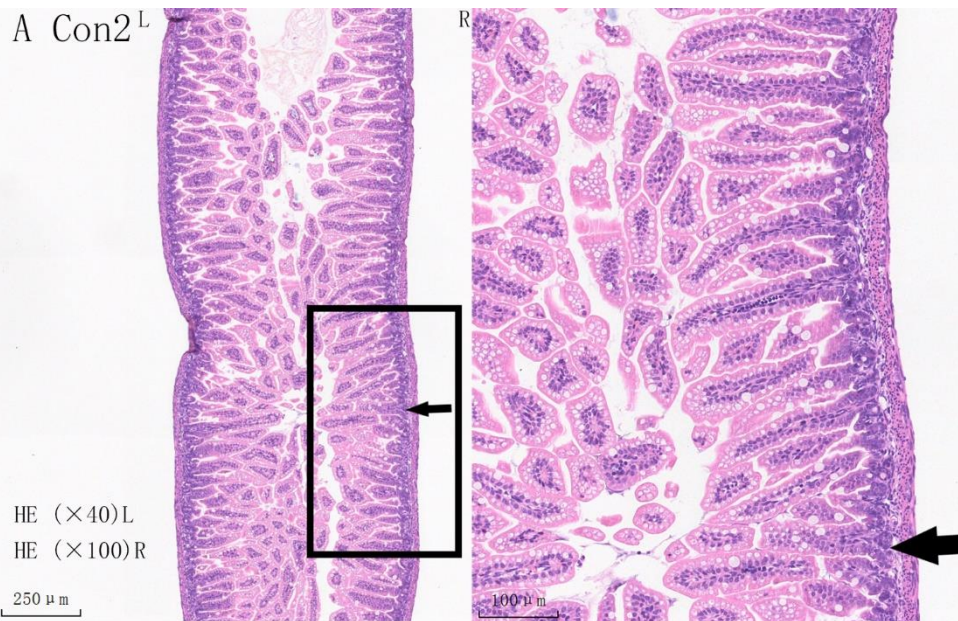
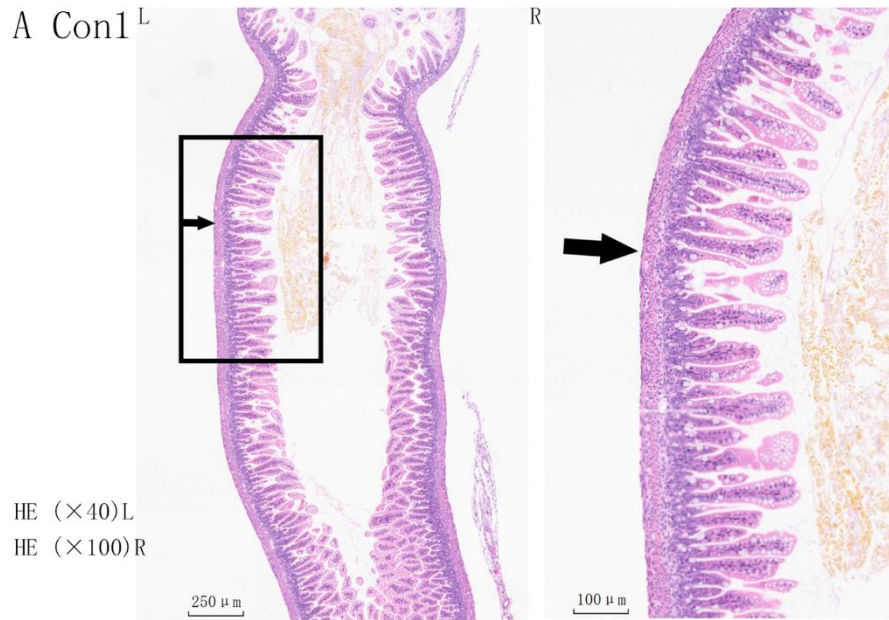
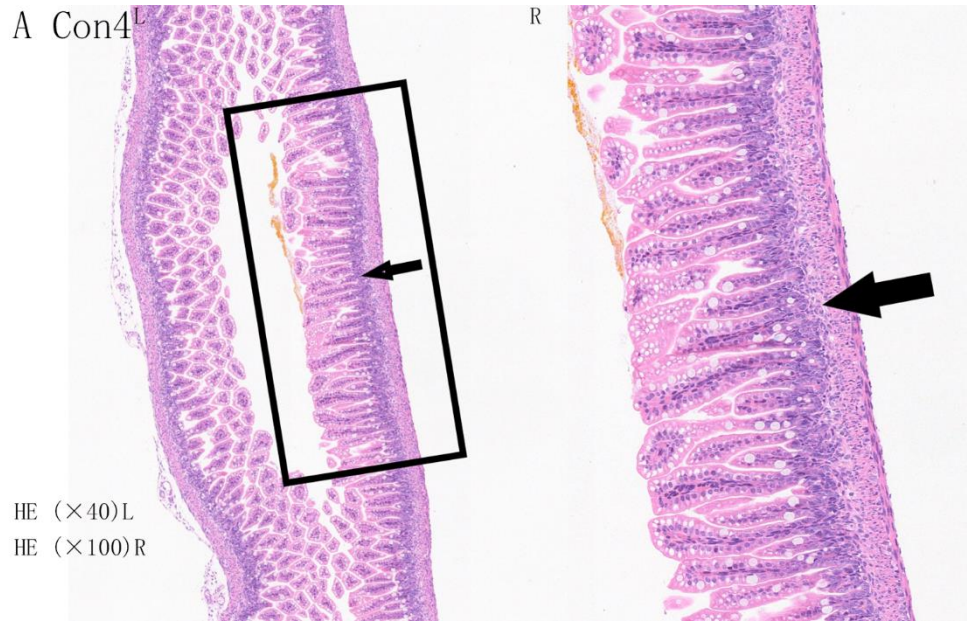
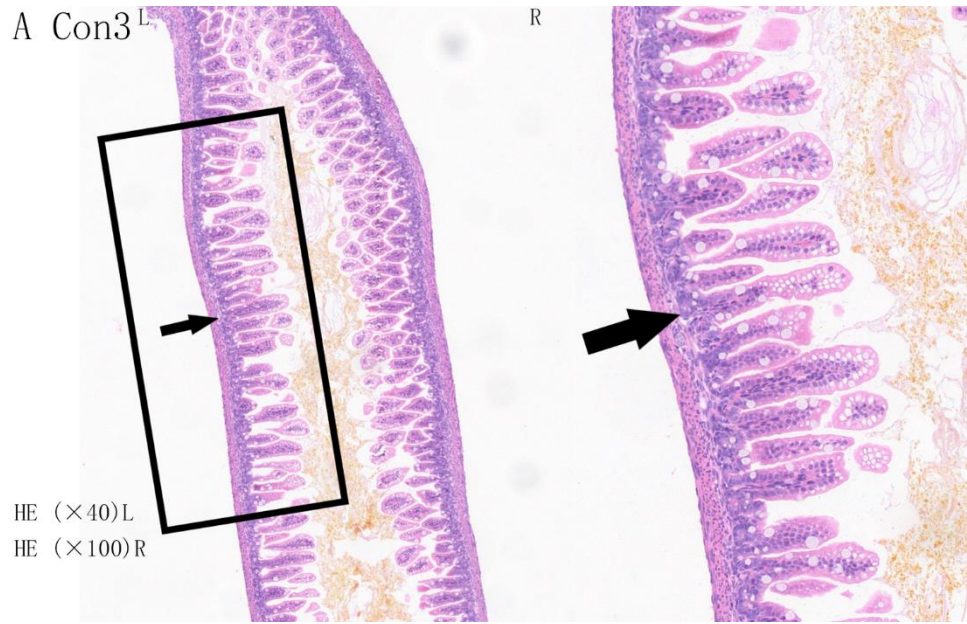
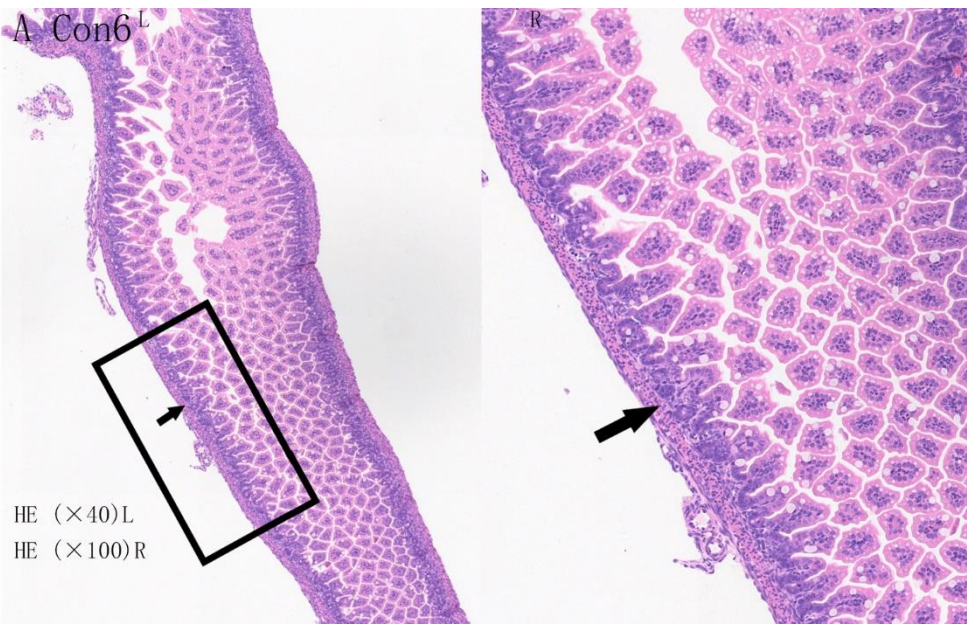
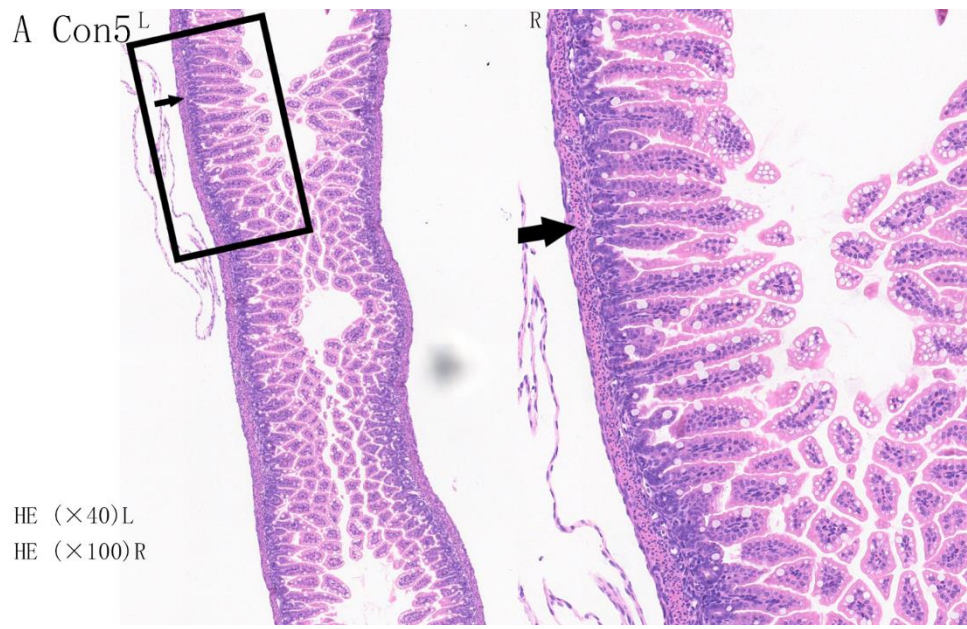


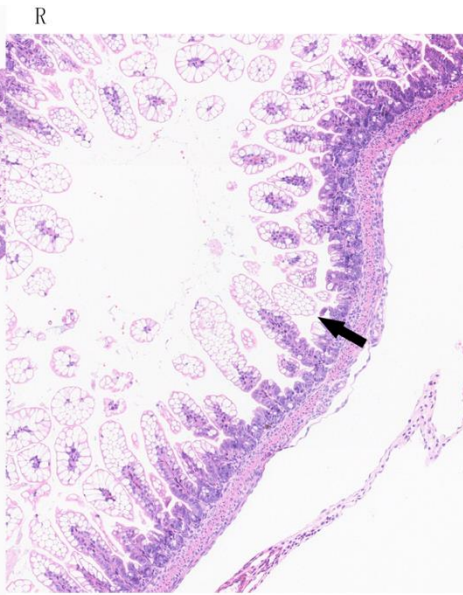
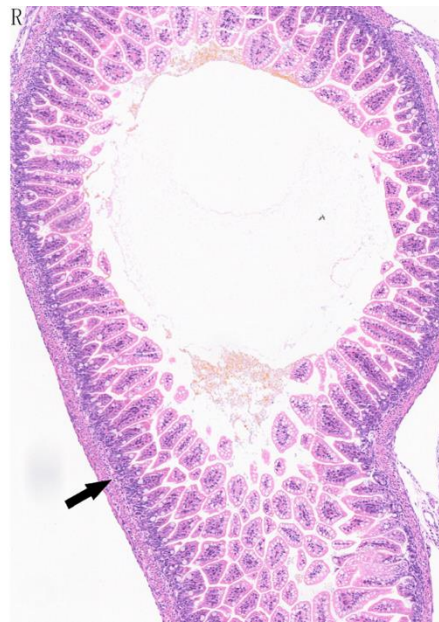
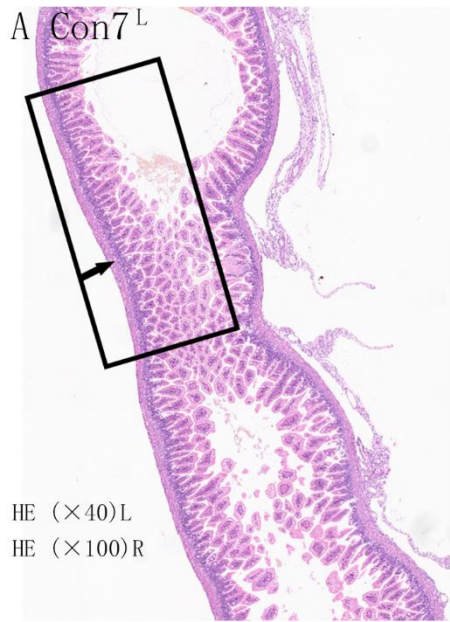
Supplementary Material

1.1 Supplementary Figures

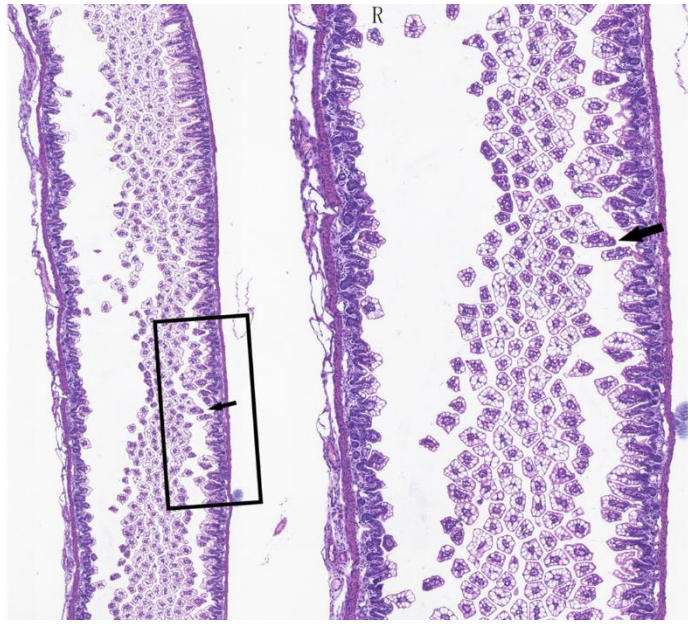






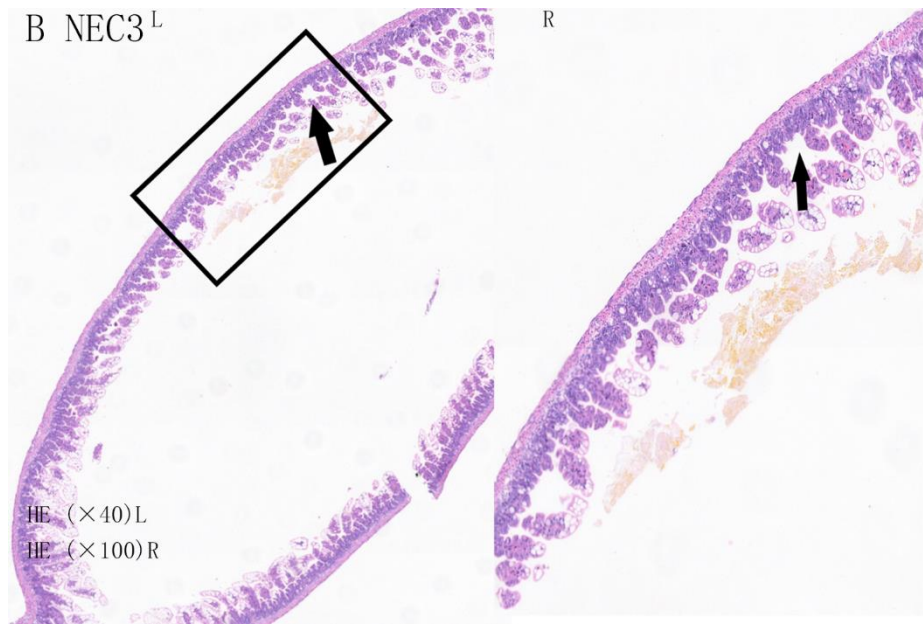


B NEC2^L

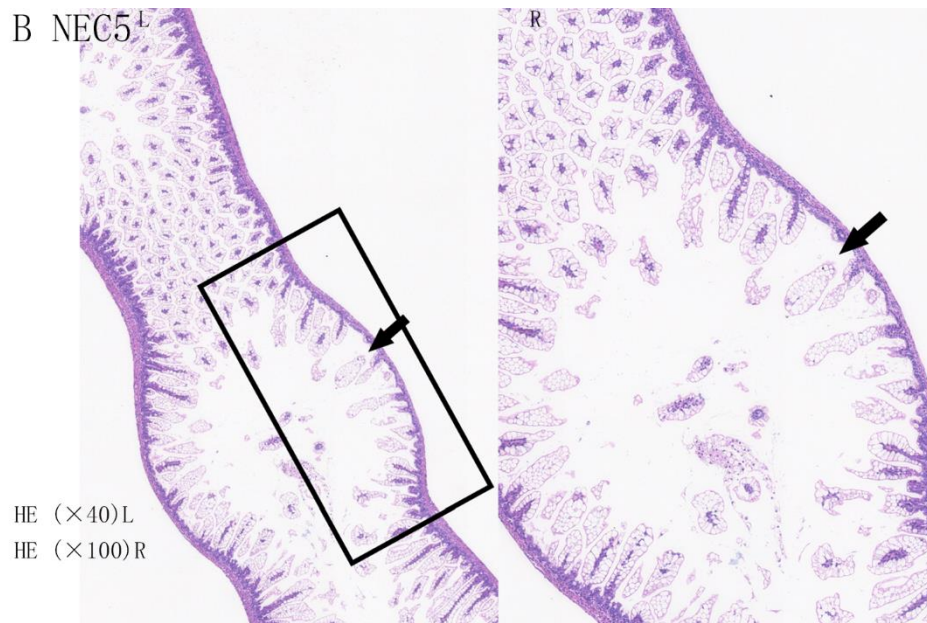
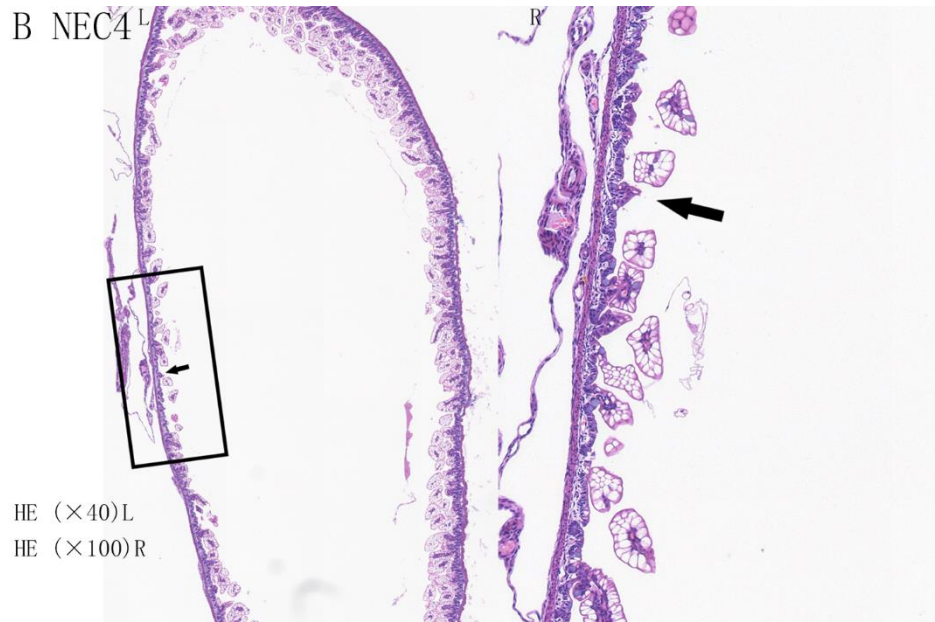


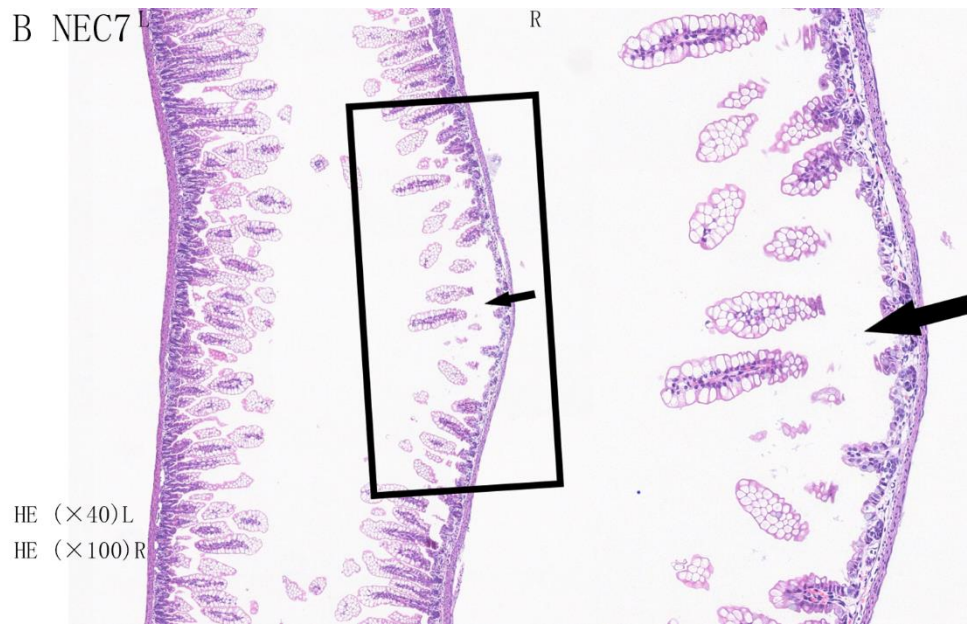
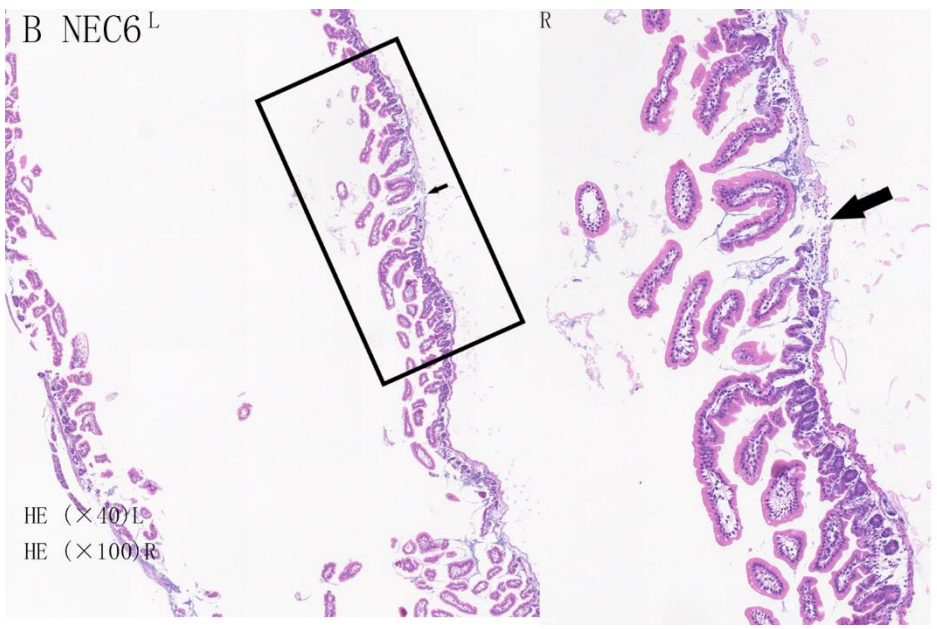
HE (×40)L
HE (×100)R

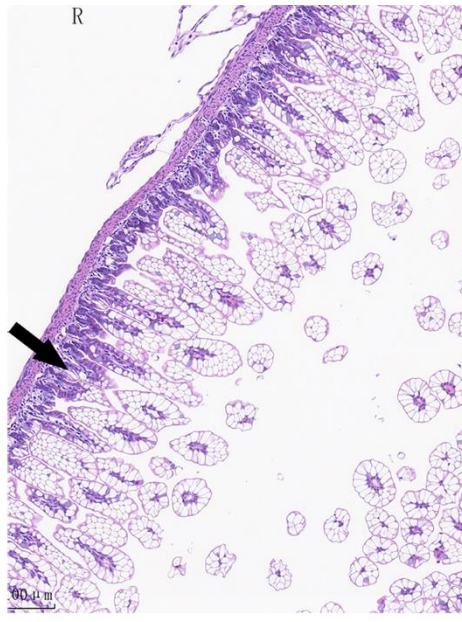
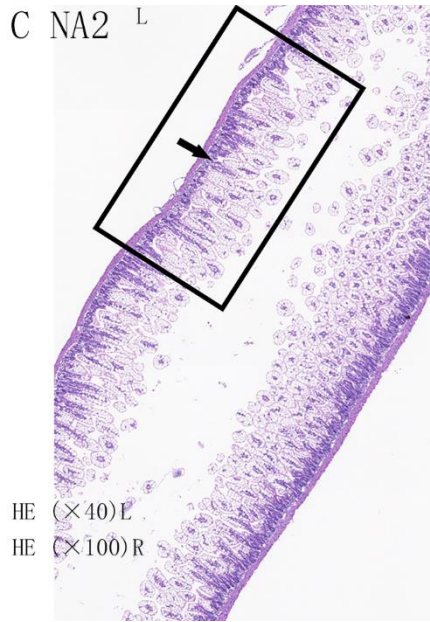
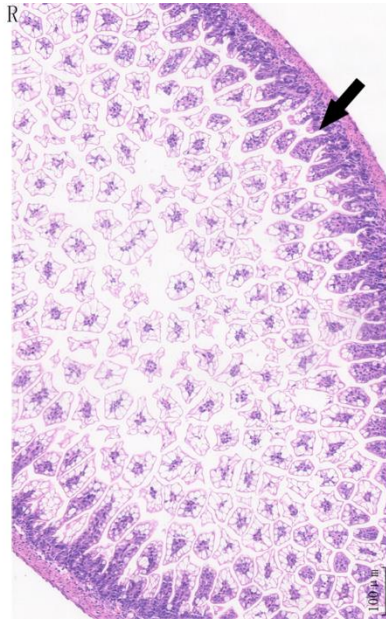
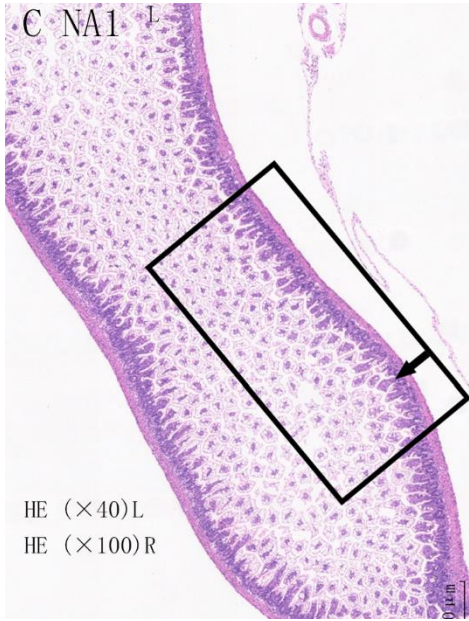
B NEC3^L

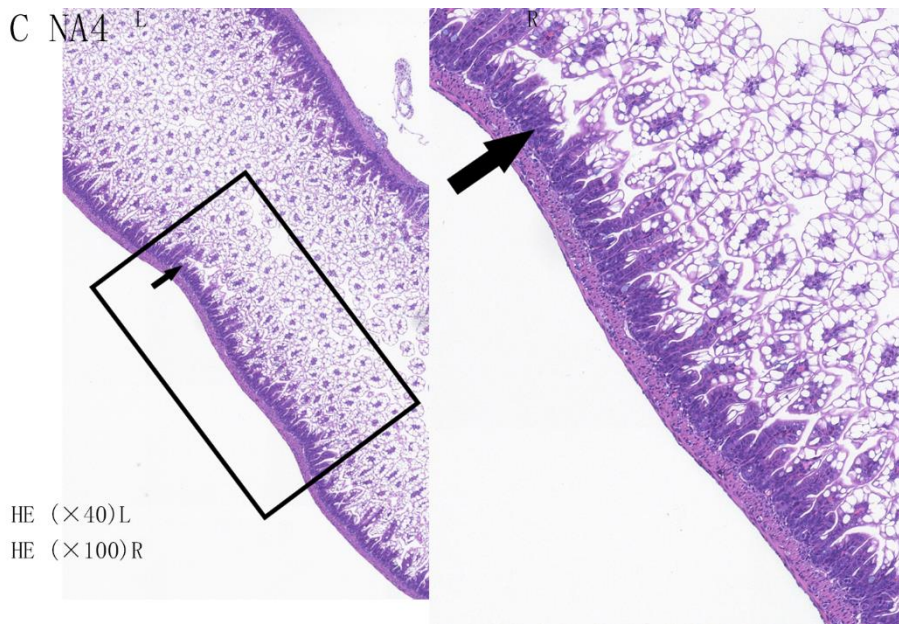
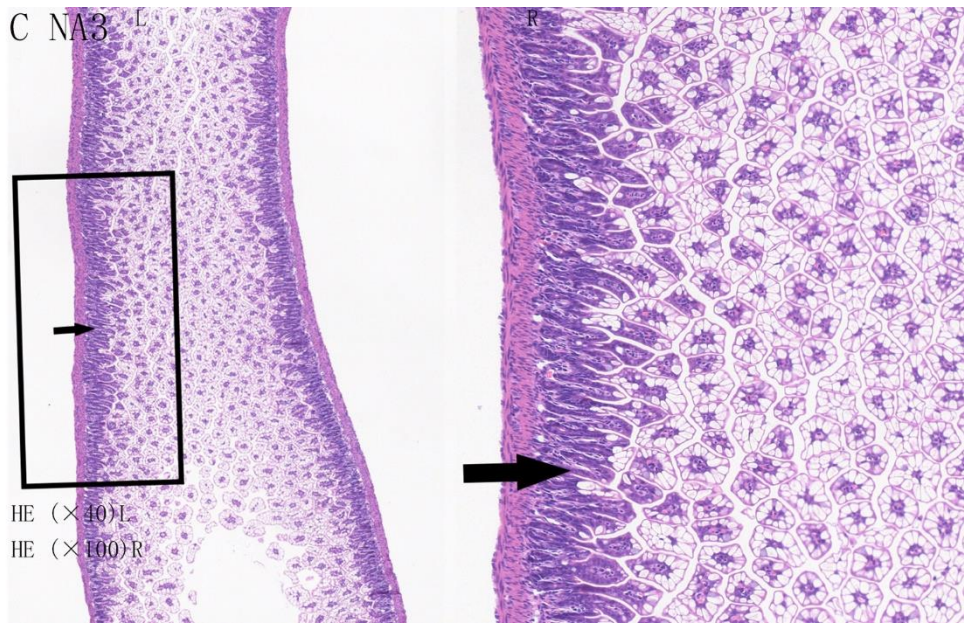


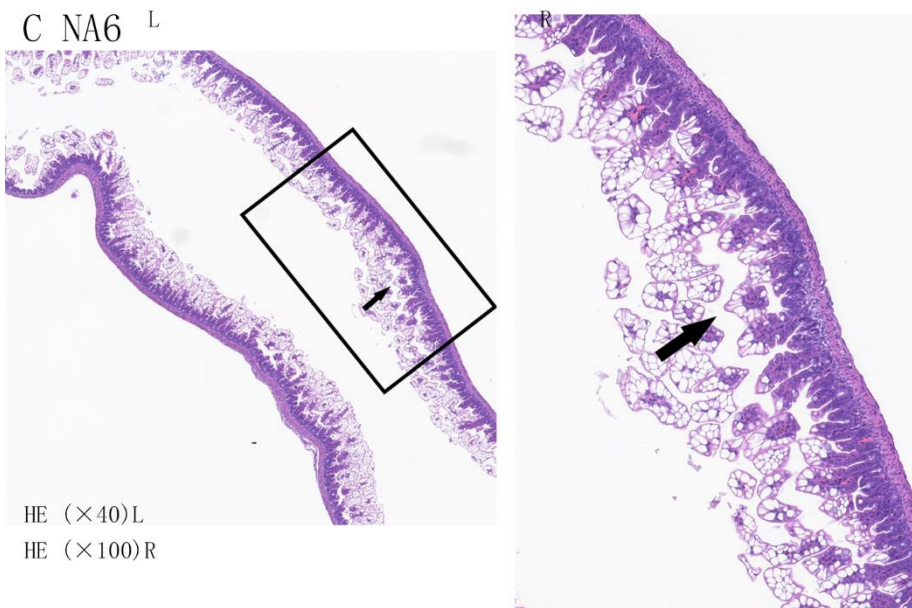
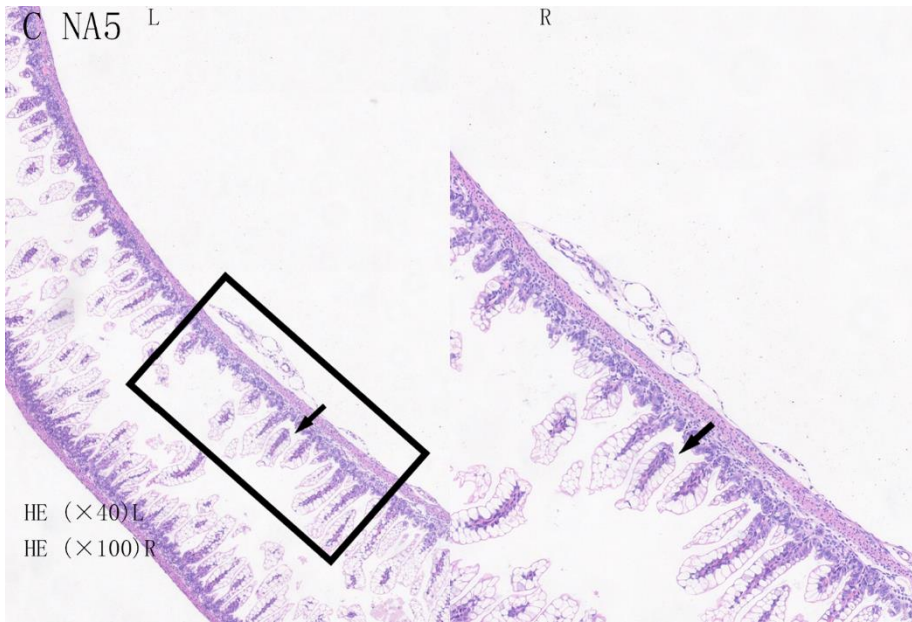
HE (×40)L
HE (×100)R

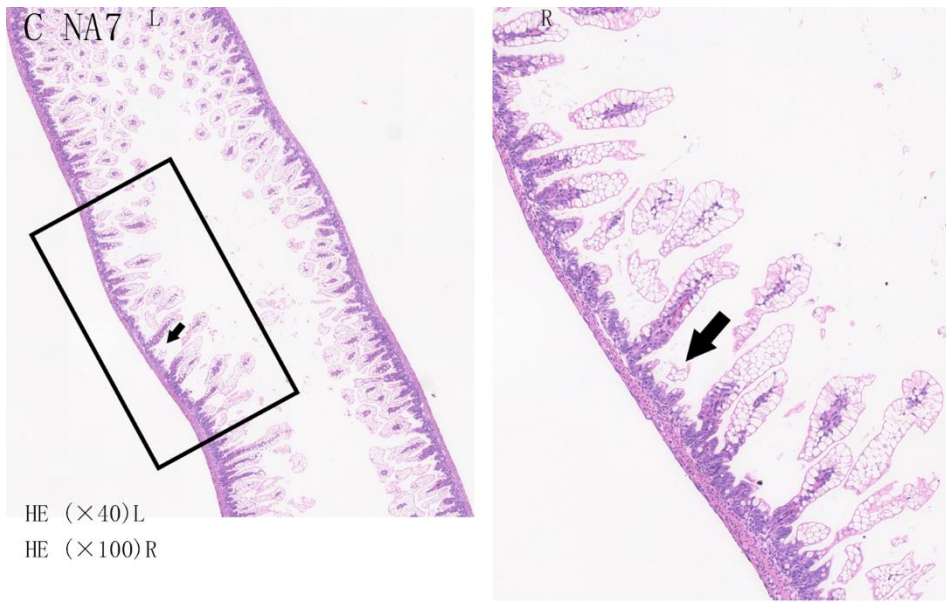












Supplementary Figure 1. (A-C) Light microscopy images of HE staining. Histological damage in the terminal ilea of each sample from the three groups: control group (A, Con1–7), NEC group (B, NEC1–7), NA group (C, NA1–7). Black rectangle indicates a representative area, with a zoomed-in image. Black arrow indicates the damage area. Magnification: ×40 (L-left) and ×100 (R-right). Scale bars: 250 μ m (L) and 100 μ m (R).