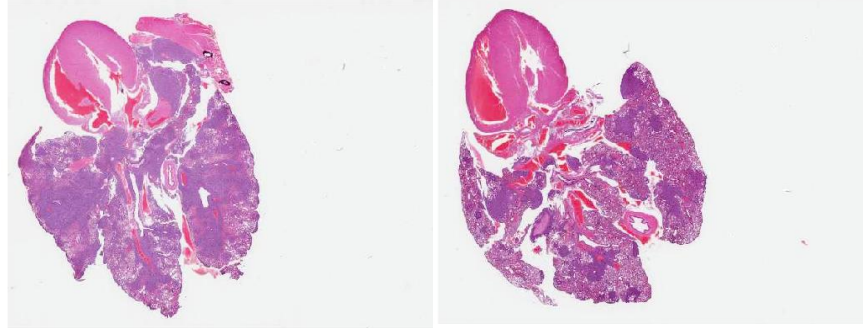


A**Lung**

miR-C

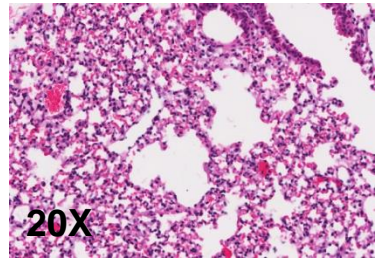
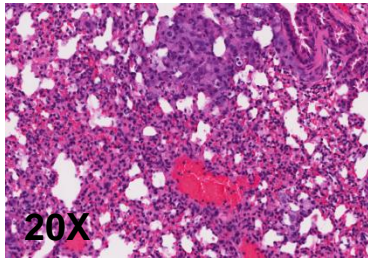
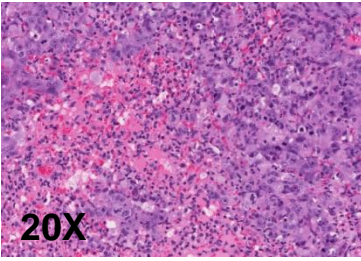
miR-145



miR-C

miR-145

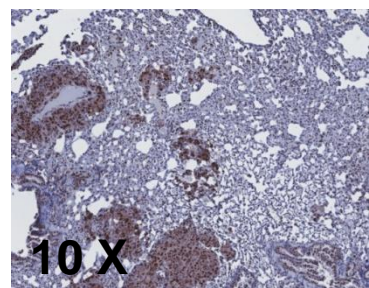
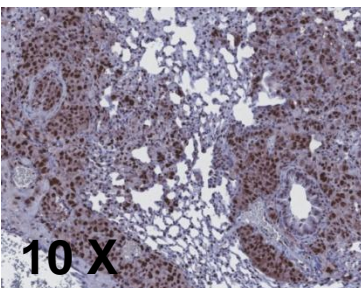
Normal mouse lung



PCNA

miR-C

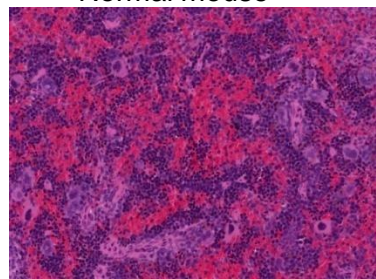
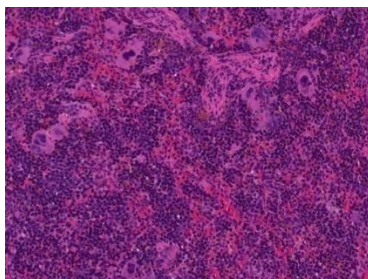
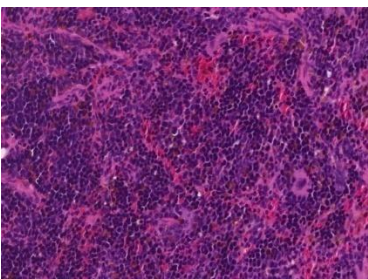
miR-145

**B****Spleen**

miR-C

miR-145

Normal mouse



Supplemental figure 4: (A) Histologic analyses of lung metastasis by H&E and PCNA. (B) Splenic metastasis validation by H&E staining.