

*Supplementary Material*

**Effectiveness and Safety of Acupuncture for Vascular Cognitive Impairment: A Systematic Review and Meta-Analysis**

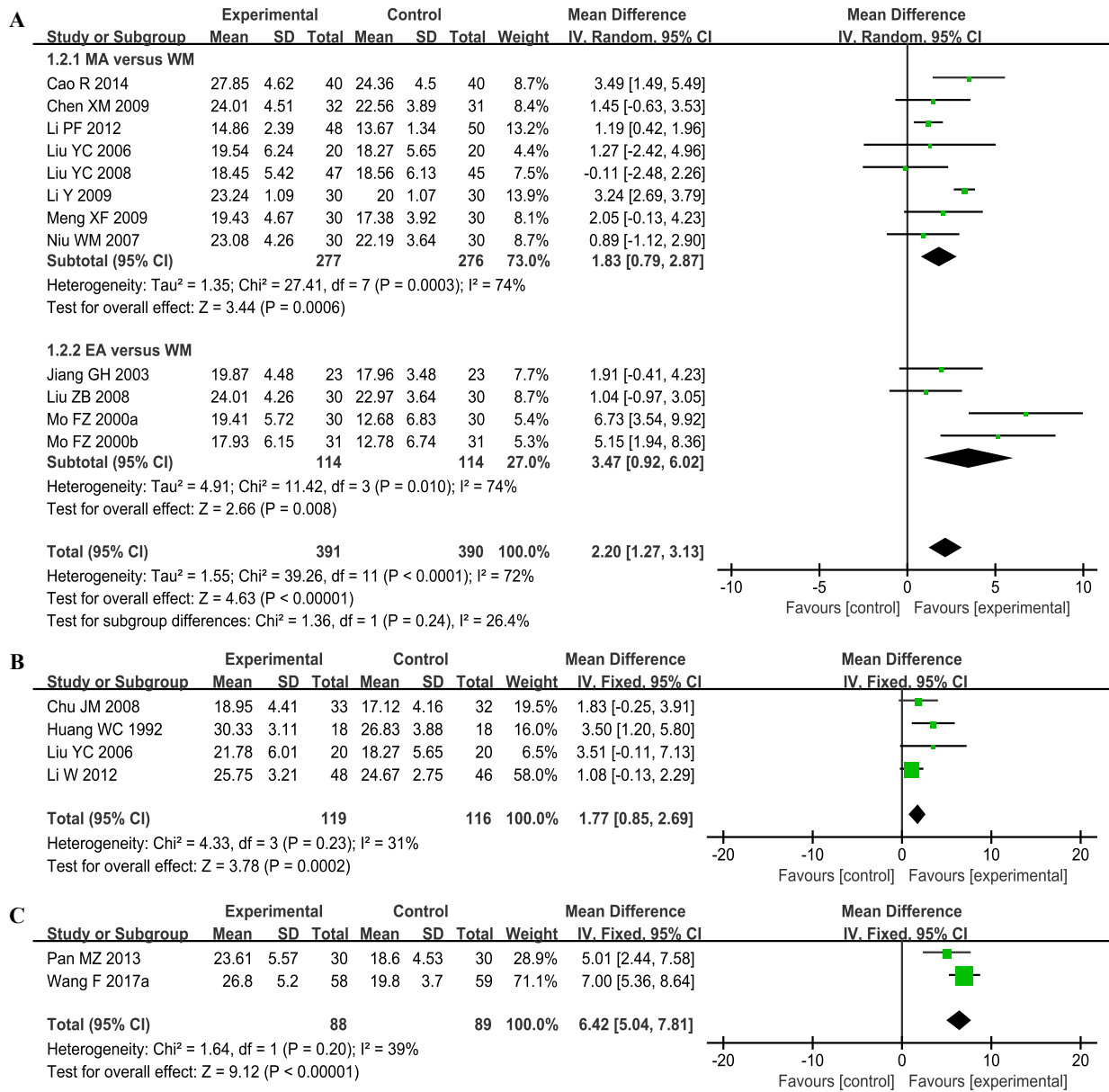
Xin-Tong Su<sup>1,2</sup>, Ning Sun<sup>3</sup>, Na Zhang<sup>4</sup>, Li-Qiong Wang<sup>1</sup>, Xuan Zou<sup>1</sup>, Jin-Ling Li<sup>1</sup>, Jing-Wen Yang<sup>1</sup>,  
Guang-Xia Shi<sup>1\*</sup> and Cun-Zhi Liu<sup>1,2\*</sup>

<sup>1</sup> *International Acupuncture and Moxibustion Innovation Institute, School of Acupuncture-Moxibustion and Tuina, Beijing University of Chinese Medicine, Beijing, China*

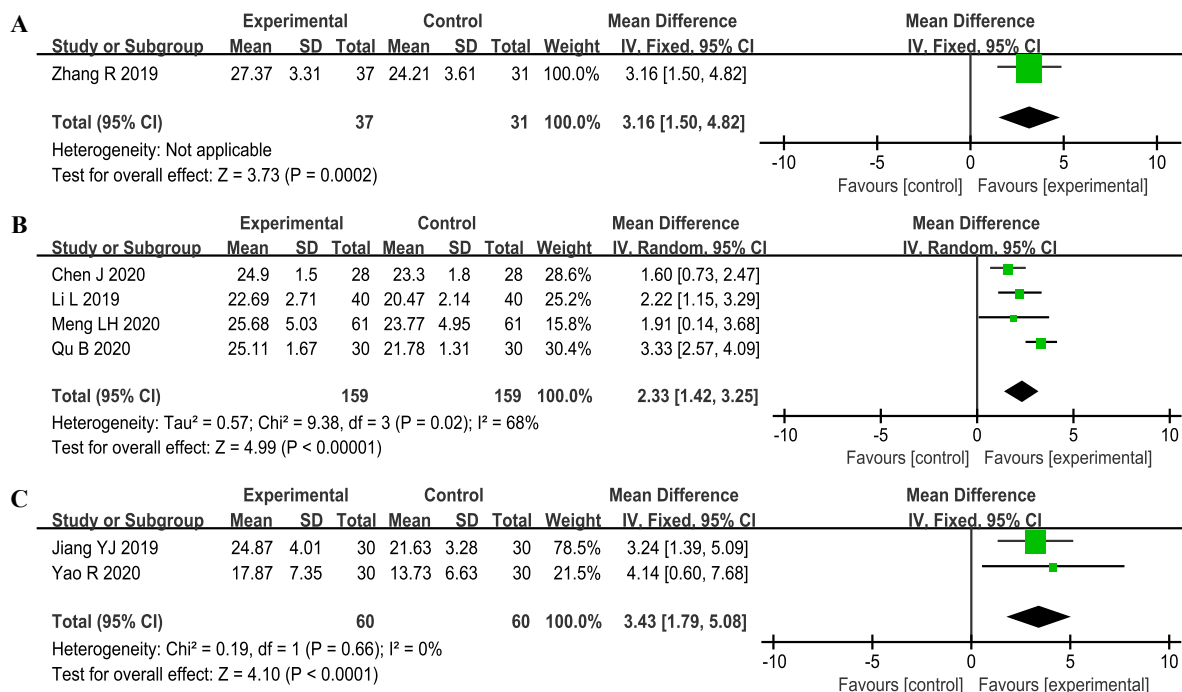
<sup>2</sup> *Traditional Chinese Medicine (TCM) in the Prevention and Rehabilitation of Stroke Task Force, World Stroke Organization, Geneva, Switzerland*

<sup>3</sup> *Acupuncture and Tuina School/The 3rd Teaching Hospital, Chengdu University of Traditional Chinese Medicine, Chengdu, China*

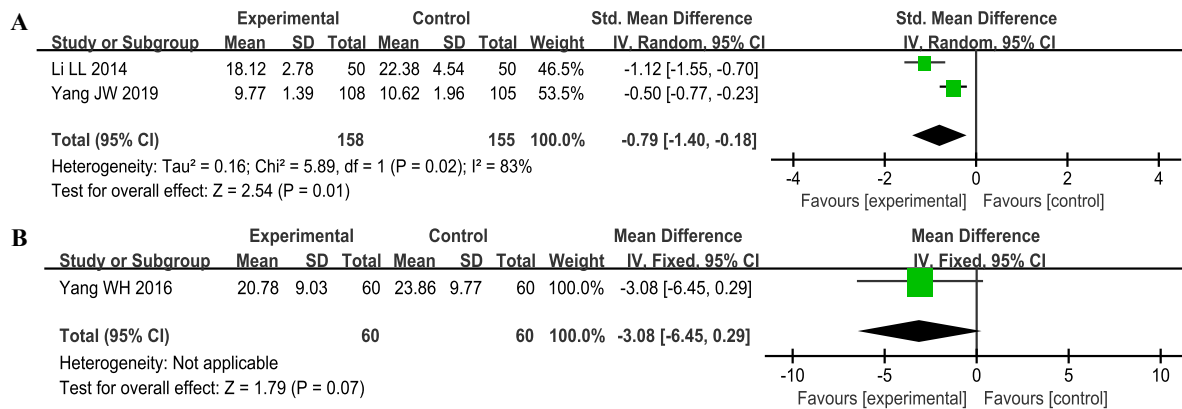
<sup>4</sup> *School of Acupuncture-Moxibustion and Tuina, Shandong University of Chinese Medicine, Jinan, China*



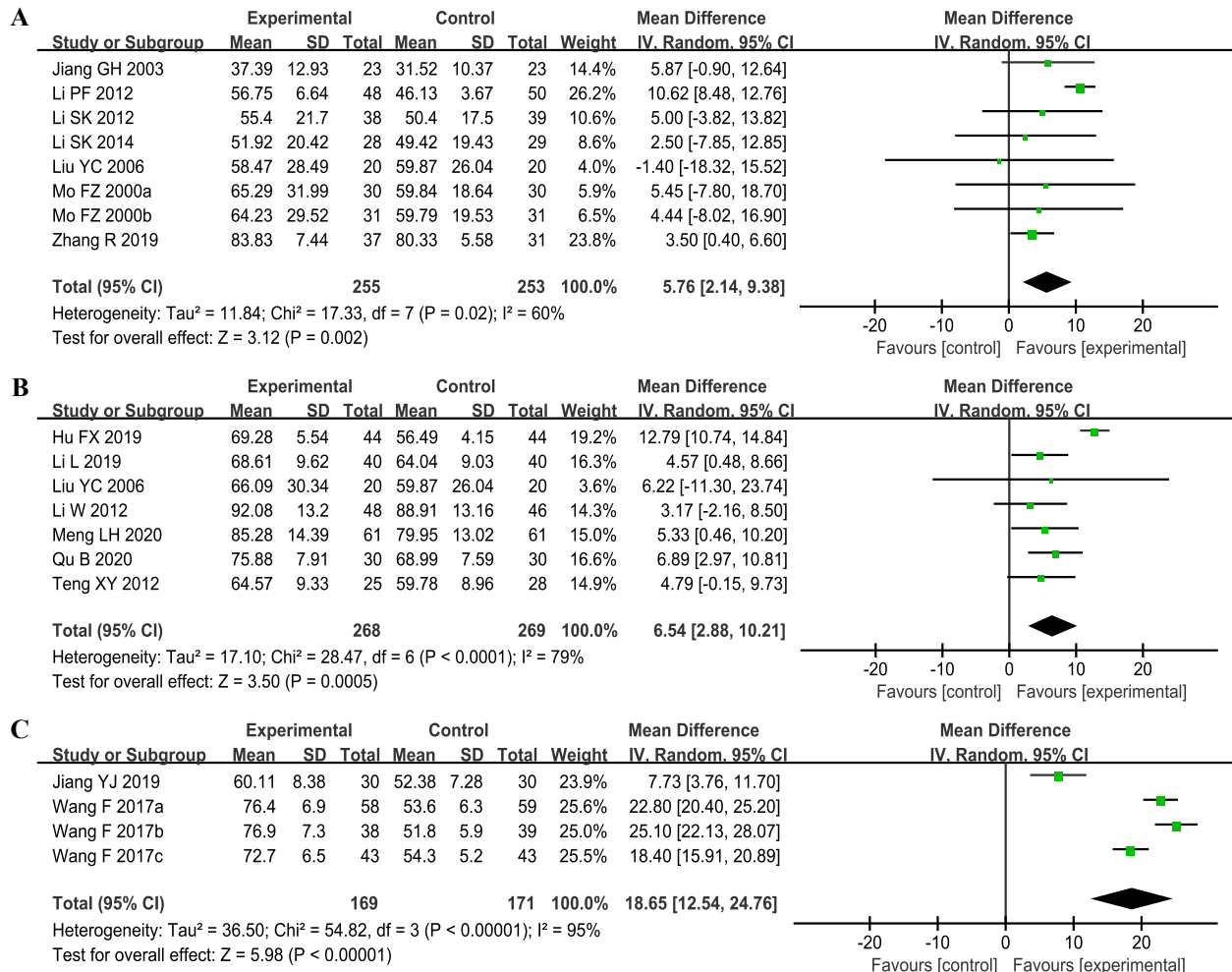
**Supplementary Figure 1. The forest plot of HDS. (A) acupuncture vs. WM, (B) acupuncture plus WM vs. WM alone, (C) acupuncture plus UC vs. UC alone.**



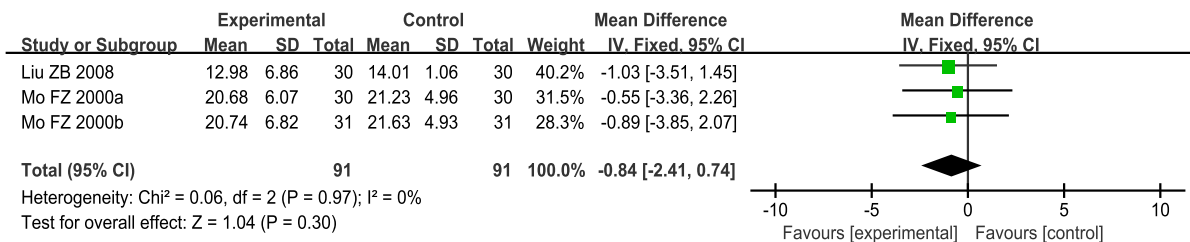
**Supplementary Figure 2. The forest plot of MoCA.** (A) acupuncture vs. WM, (B) acupuncture plus WM vs. WM alone, (C) acupuncture plus UC vs. UC alone.



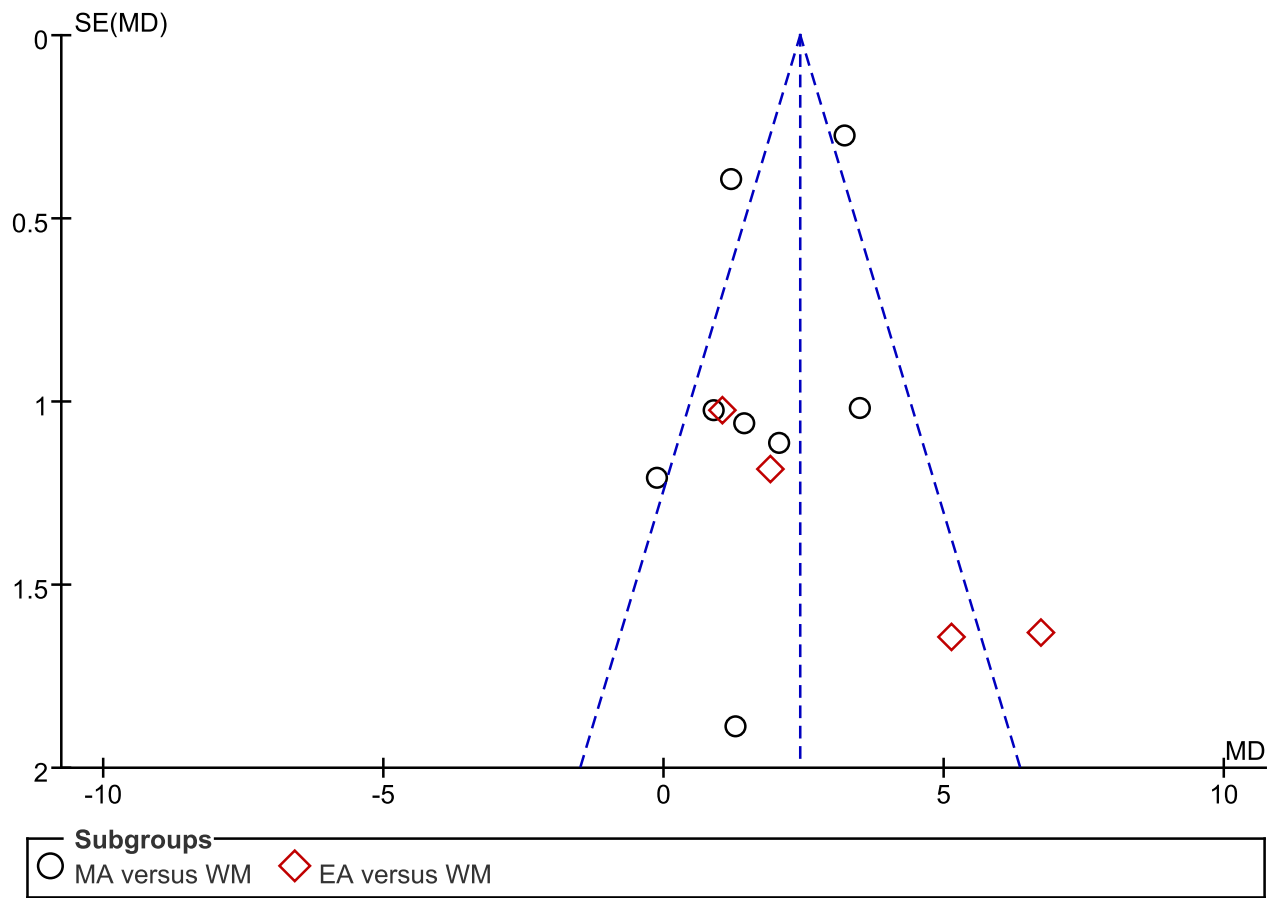
**Supplementary Figure 3. The forest plot of ADAS-cog.** (A) acupuncture vs. WM, (B) acupuncture plus WM vs. WM alone.



**Supplementary Figure 4. The forest plot of BI.** (A) acupuncture vs. WM, (B) acupuncture plus WM vs. WM alone, (C) acupuncture plus UC vs. UC alone.



**Supplementary Figure 5. The forest plot of FAQ comparing acupuncture vs. WM.**



**Supplementary Figure 6. The funnel plot of HDS comparing acupuncture vs. WM.**