

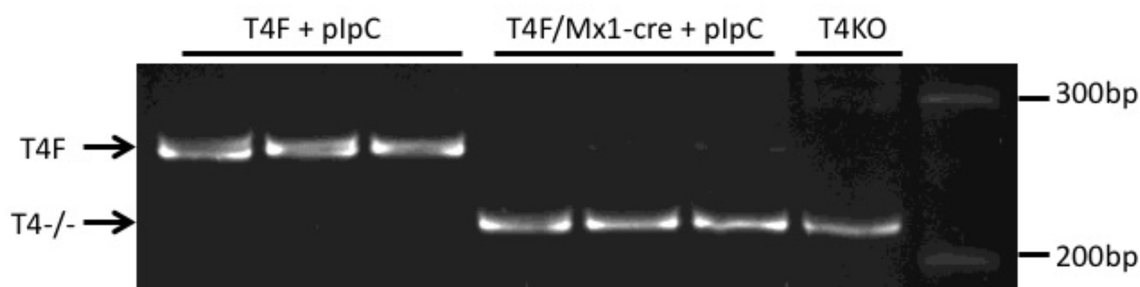
Supplementary Material

1 Supplementary Table 1

Supplementary Table 1. List of mouse primers used for qRT-PCR (SYBR Green)

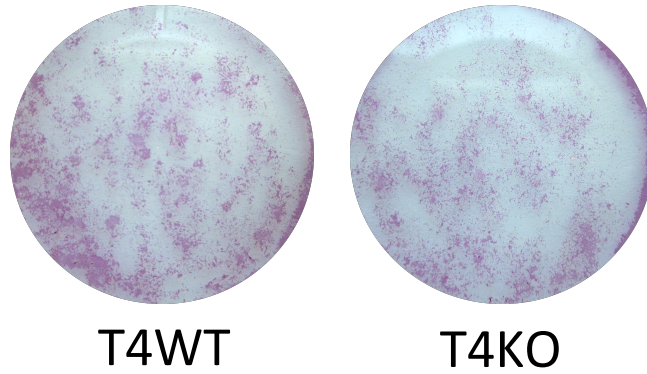
Gene	Forward (5' to 3')	Reverse (5' to 3')
Oc	ACAAGTCCCACACAGCAGCTT	GCCGGAGTCTGTTCACCTACTACCT
Osx	GTACGGCAAGGCTTCGCATCTG	CTGATGTTTGCTCAAGTGGTCGC
Opg	GGCCTGATGTATGCCCTCAA	GTGCAGGAACCTCATGGTCTTC
Spp1	CCCGGTGAAAGTGAAGTACTGATTCT	GATCTGGGTGCAGGCTGTAAA
Ap	CACAGATTCCCAAAGCACCT	GGGATGGAGGAGAGAAGGTC
Runx2	GCCGGGAATGATGAGAACTA	GGTGAAACTCTTGCCTCGTC
18s	CGGAAATAGCCTTCGCCATCAC	ATCACTCGCTCCACCTCATCCT
Bmp2	ACTTTTCTCGTTTGTGGAGC	GAACCCAGGTGTCTCCAAGA
Bmp4	TGAGCCTTTCAGCAAGTTT	CTTCCCAGTCTCAGGTATCA
Runx1	CACCGTCTTTACAAATCCGCCAC	CGCTCGGAAAAGGACAAACTCC

2 Supplementary Figure 1



Supplementary Figure 1. High Efficiency of *Tle4* knockout with *Mx1-cre* induction by pIpC in conditional *Tle4* null mice. Mice homozygous for a conditional *Tle4* allele consisting of *loxP*-flanked exon2 were treated with pIpC. Mice containing *Mx1-cre* demonstrate very high level of excision of exon 2 resulting in a reduced PCR product in this assay from 264 bp to 224 bp, matching the product seen in *T4KO* mice.

3. Supplementary Figure 2



Supplementary Figure 2. Alkaline Phosphatase staining in stromal cells cultures generated from bones of one-week old T4WT or T4KO littermates.