

Supplementary Online Content

Yanez B, Gray RJ, Sparano JA, et al. Association of modifiable risk factors with early discontinuation of adjuvant endocrine therapy: a post hoc analysis of a randomized clinical trial. *JAMA Oncol*. Published online June 17, 2021.

doi:10.1001/jamaoncol.2021.1693

eTable 1. Medical Information in the TAILORx Study

eTable 2. Sample Characteristics and Results from Initial Joint Model on Endocrine Therapy Early Discontinuation

eTable 3. Endocrine Therapy Early Discontinuation by Medication Status, Adjusted for Age and Chemotherapy

eFigure 1. CONSORT Diagram

eFigure 2. Kaplan-Meier Curve

This supplementary material has been provided by the authors to give readers additional information about their work.

eTable 1. Medical Information in the TAILORx Study

Comorbidities Collected in the TAILORx Trial	Non-Endocrine Therapy Medications Collected in the TAILORx Trial
Antidepressants	Arthritic Conditions
Antihypertensives	Cardiovascular disease
Anxiolytics	Cerebrovascular disease
Bisphosphonates	Depression
COX-2 inhibitors	Diabetes
Diabetes medications	Fibromyalgia
Intravaginal Estrogen Preparations	Hyperlipidemia
Lipid-lowering agents	Hypertension
Non-Prescription Supplements for Memory	Liver disease
Non-Steroidal Anti-Inflammatory Agents	Neuropathy
Opioid-containing analgesics	Osteoarthritis
Prescription Medications for Relief of Hot Flashes	Osteoporosis
Prophylactic Antiplatelet Therapy	Pulmonary Disease

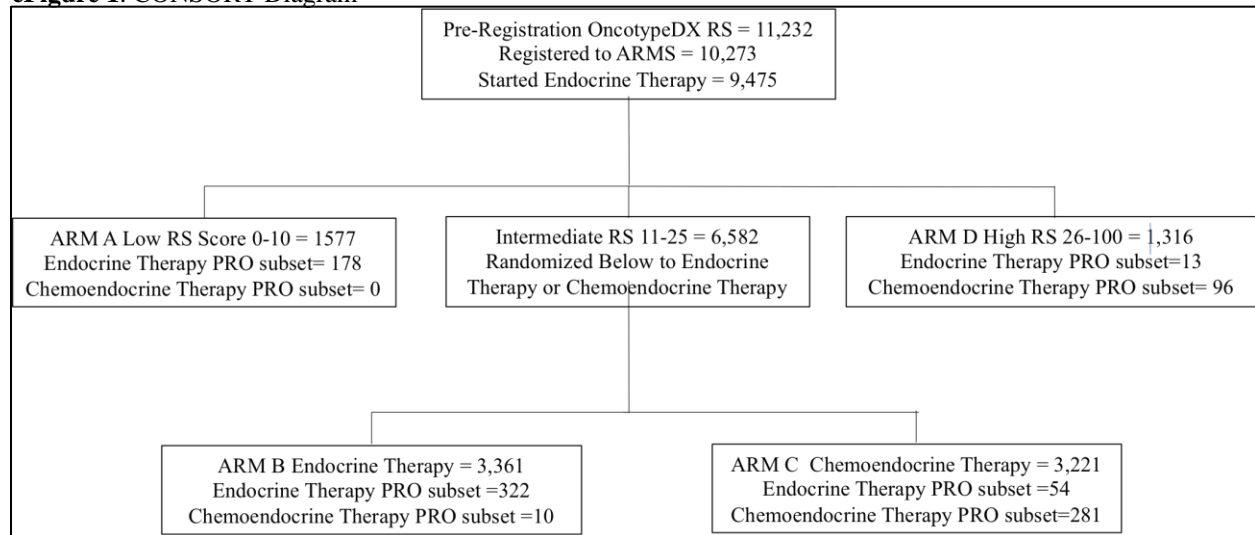
eTable 2. Sample Characteristics and Results from Initial Joint Model on Endocrine Therapy Early Discontinuation

Characteristics	<i>n</i>	Hazard Ratio	<i>P</i>-value
No Chemotherapy	567	reference	
Received Chemotherapy	387	.57	.02
Age ≤40	34	reference	
Age (41-50)	218	.39	.02
Age (51-60)	356	.28	.001
Age (61-70)	287	.40	.02
Age >70	59	.23	.02
Race White	760	reference	
Race Black	83	.90	.75
Race Asian	49	.95	.90
Race Other/Unknown	62	.87	.77
RS 0-10	178	reference	
RS 11-25	667	.93	.78
RS >25	109	1.11	.81
Private Insurance	555	reference	
Medicare	133	1.19	.59
Medicaid	74	1.56	.15
Military	14	.65	.67
None	49	1.24	.61
International Enrollment	121	.62	.22
Other Insurance	8	1.06	.95

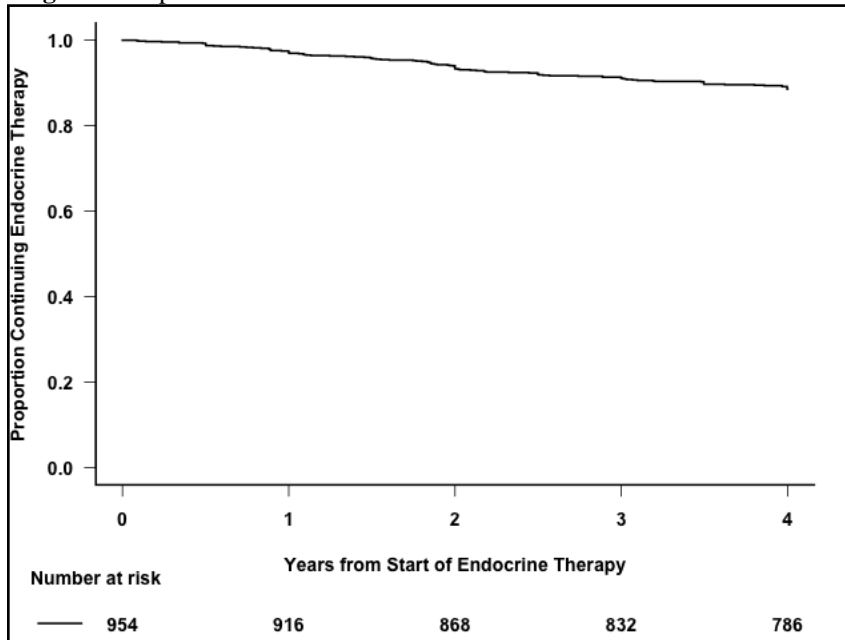
eTable 3. Endocrine Therapy Early Discontinuation by Medication Status, Adjusted for Age and Chemotherapy

Non-Endocrine Therapy Medications	<i>n</i>	Hazard Ratio	95% Confidence Interval	<i>P</i>-value
No Prescription Meds	219	reference		.26
1-3 Prescription Meds	429	1.01	(0.60, 1.68)	
4-7 Prescription Meds	218	1.54	(0.89, 2.65)	
>7 Prescription Meds	78	1.02	(0.46, 2.30)	
No Metformin Agents	843	reference		.62
Metformin Agents	84	0.83	(0.40, 1.71)	
No Insulin	904	reference		.58
Insulin	21	1.38	(0.44, 4.37)	
No Opioids	815	reference		.40
Opioids	111	1.27	(0.73, 2.19)	
No Anxiolytics/Sedatives	824	reference		.56
Anxiolytics/Sedatives	101	1.19	(0.66, 2.12)	
No Antiplatelet	796	reference		.92
Antiplatelet	132	1.03	(0.59, 1.78)	
No NSAIDS	797	reference		.98
NSAIDS	124	1.01	(0.57, 1.77)	
No COX-2 Inhibitor	912	reference		.52
COX-2 Inhibitor	12	1.59	(0.39, 6.43)	
No Antidepression Meds	745	reference		.003
Any Antidepression Meds	184	1.87	(1.23, 2.84)	
No Prescription Hot Flash Meds	914	reference		.90
Prescription Hot Flash Meds	10	0.88	(0.12, 6.30)	
No Non-Prescription Hot Flash Meds	904	reference		.05
Non-Prescription Hot Flash Meds	20	2.42	(0.99, 5.95)	
No Bisphosphonates	865	reference		.44
Bisphosphonates	61	0.7	(0.29, 1.72)	

eFigure 1. CONSORT Diagram



eFigure 2. Kaplan-Meier Curve



Proportion of breast cancer patients continuing endocrine therapy across time.