

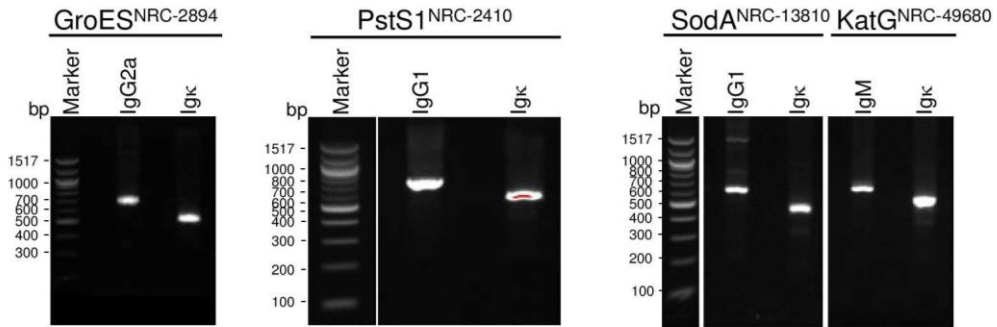
Figures with Original blots

Determination of Variable Region Sequences from
Hybridoma Immunoglobulins that Target
Mycobacterium tuberculosis Virulence Factors

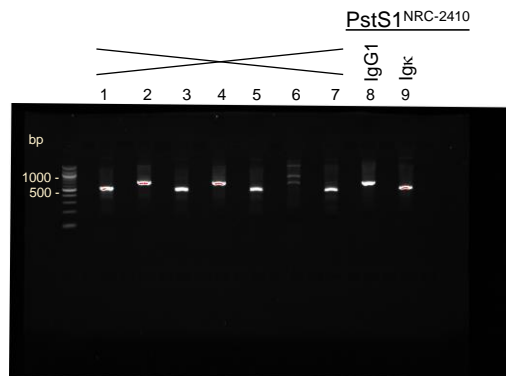
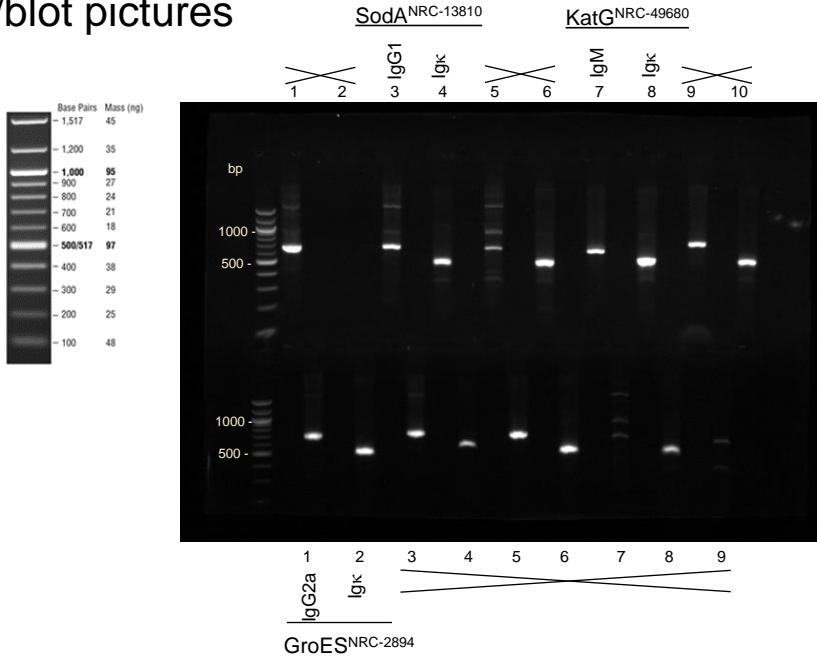
Hui-Chen Chang Foreman, Andrew Frank, and Timothy T. Stedman

BEI Resources, ATCC. 10801 University Boulevard, Manassas, VA 20110-2209

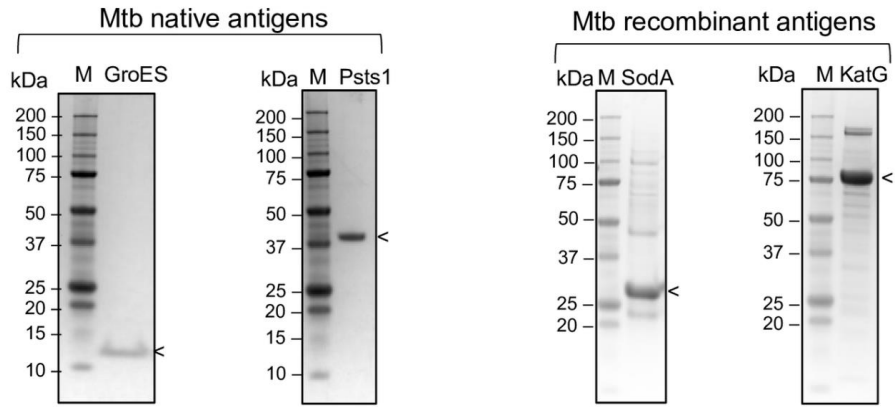
Final Fig 1B



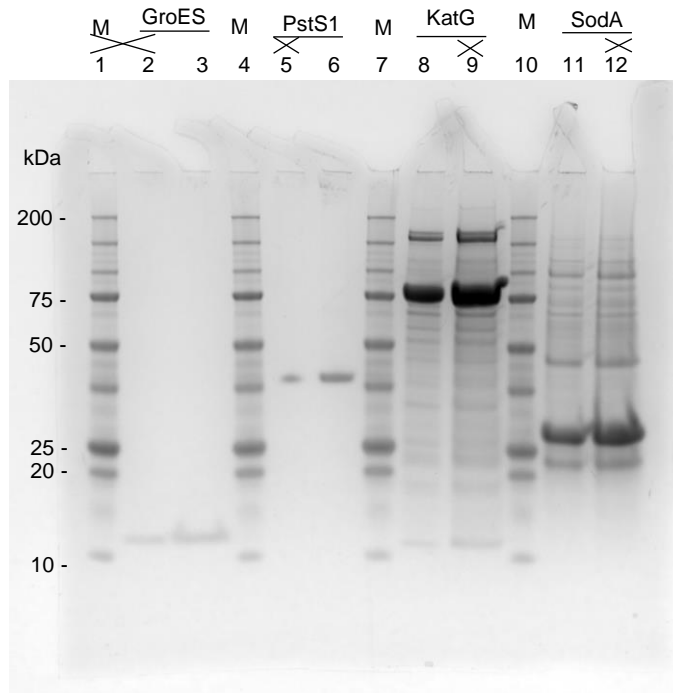
Original gel/blot pictures



Final Fig 3B

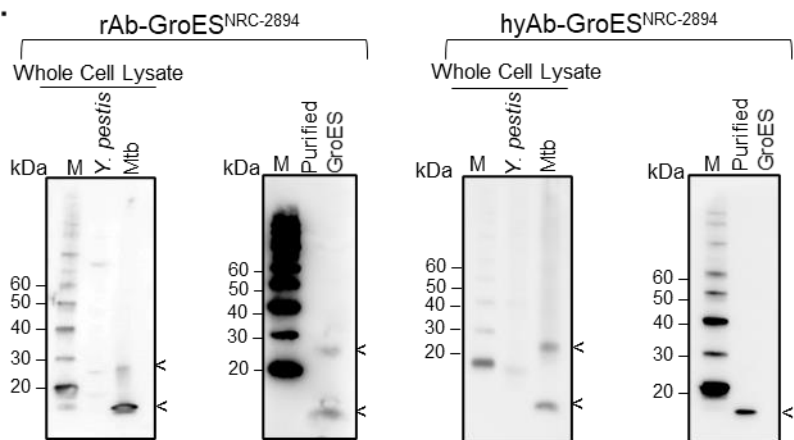


Original gel/blot pictures

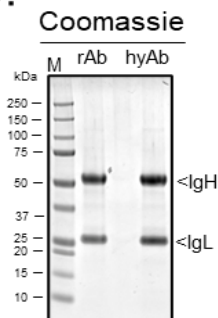


Final Fig 3C & D

C.

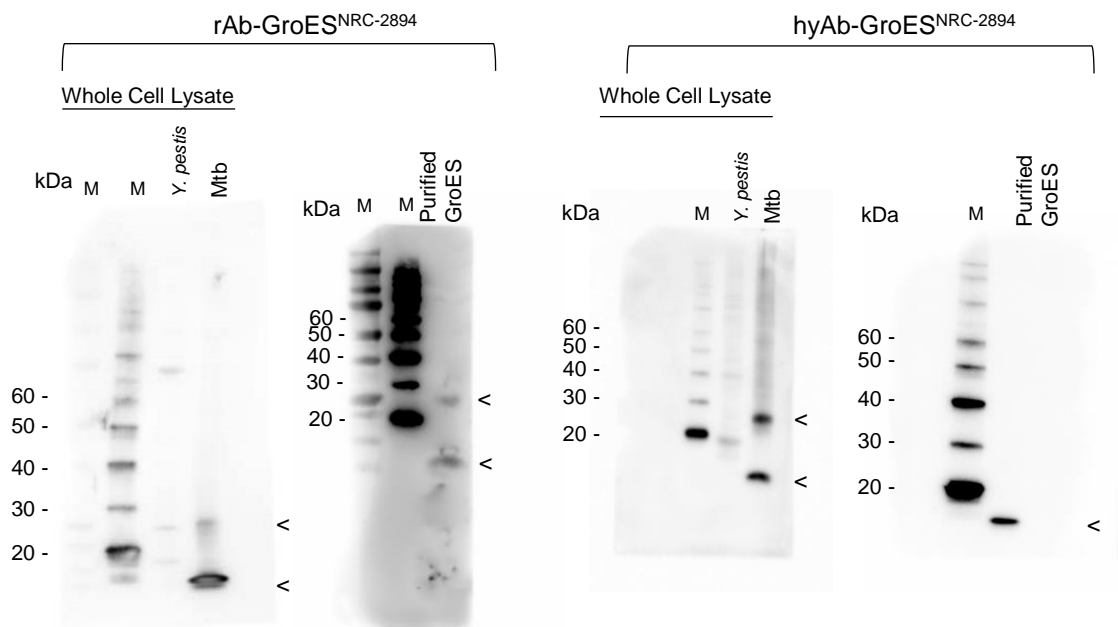


D.

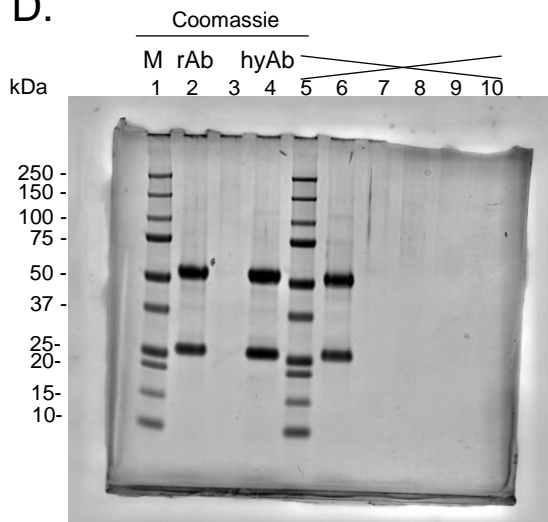


Original gel/blot pictures

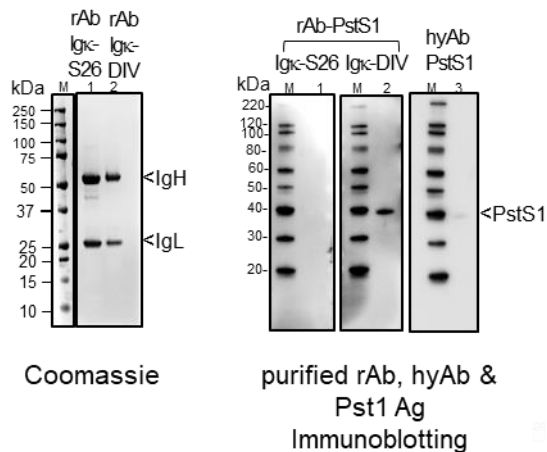
C.



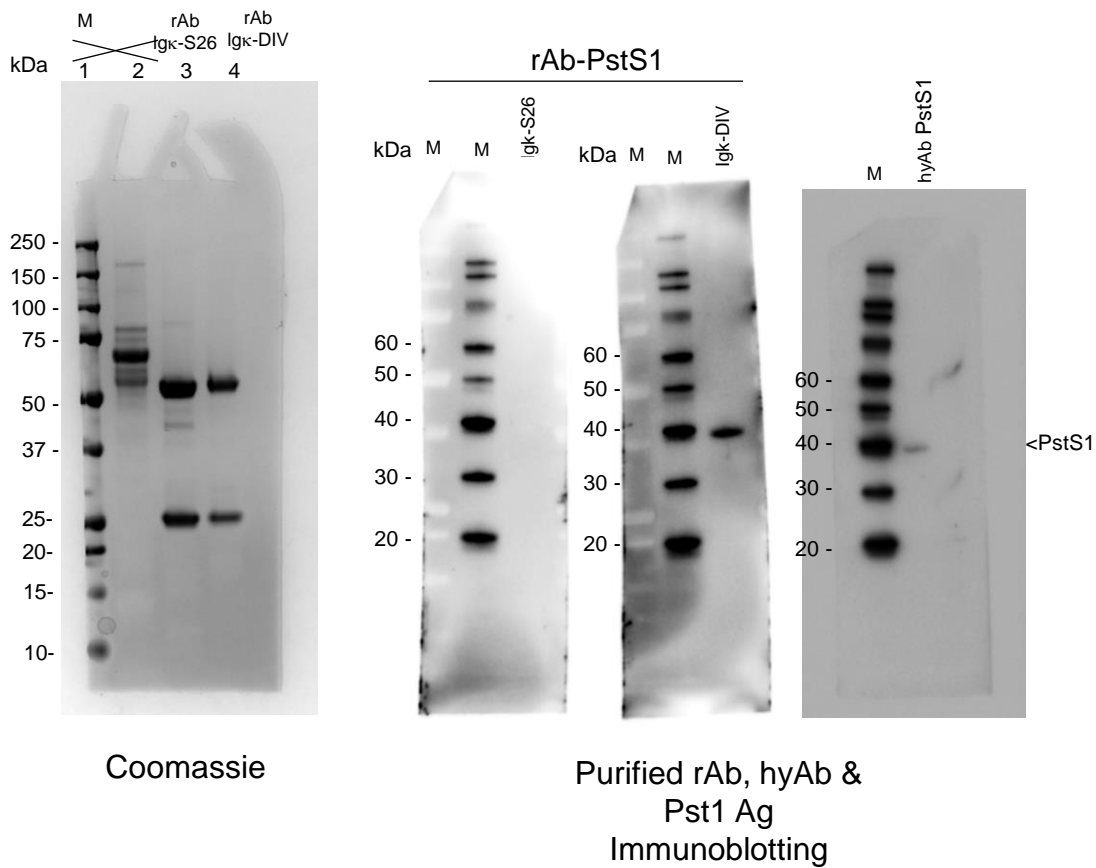
D.



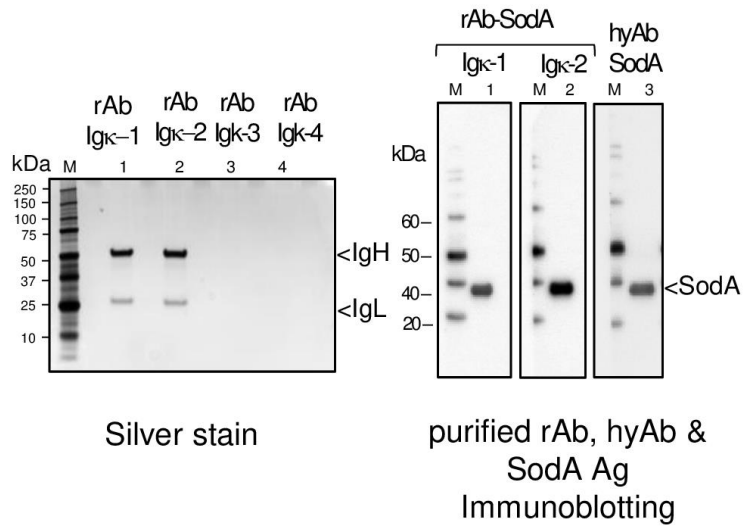
Final Fig 4A



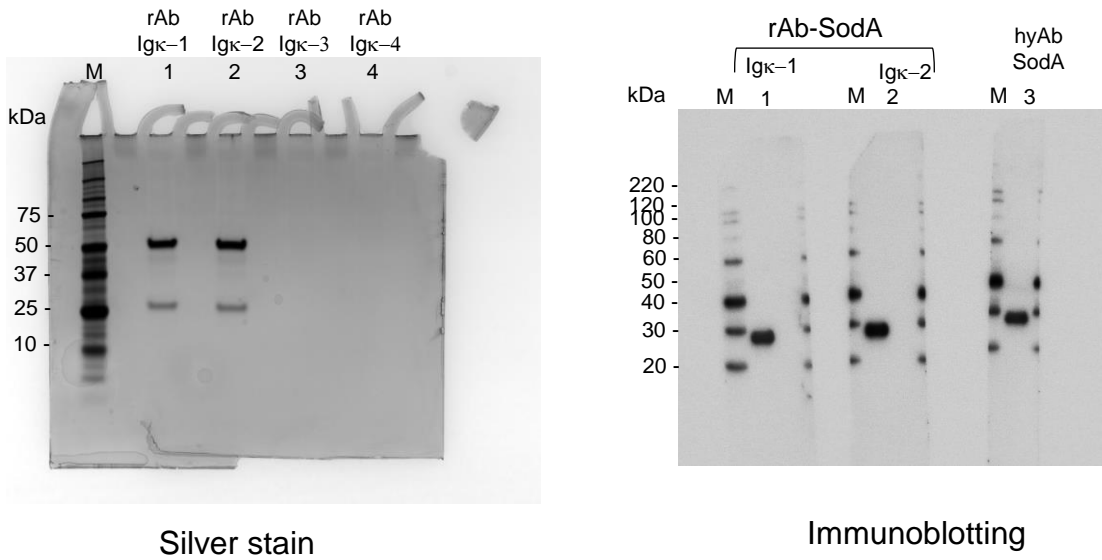
Original gel/blot pictures



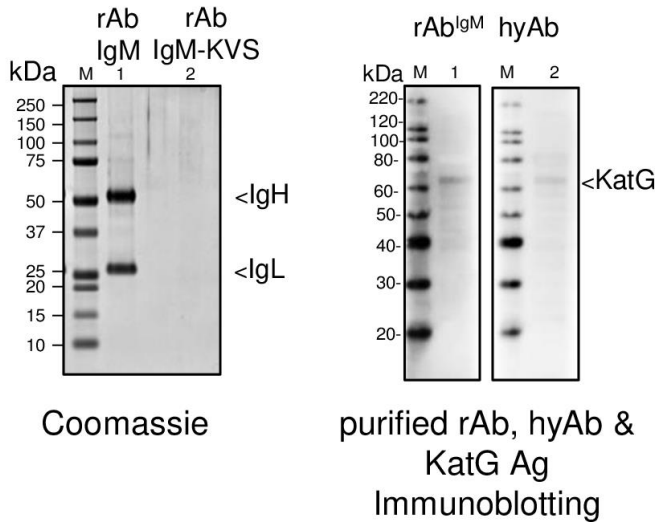
Final Fig 4B



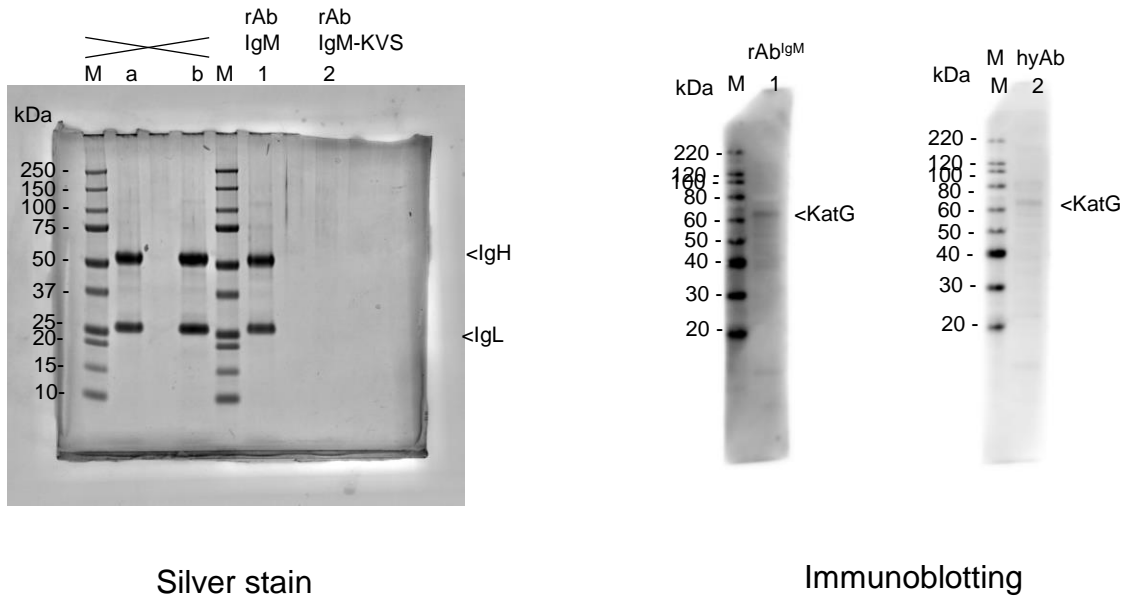
Original gel/blot pictures



Final Fig 4C

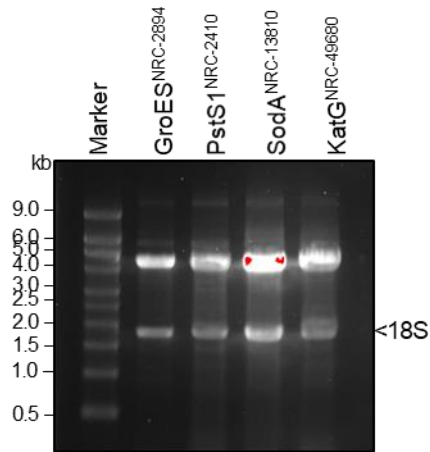


Original gel/blot pictures

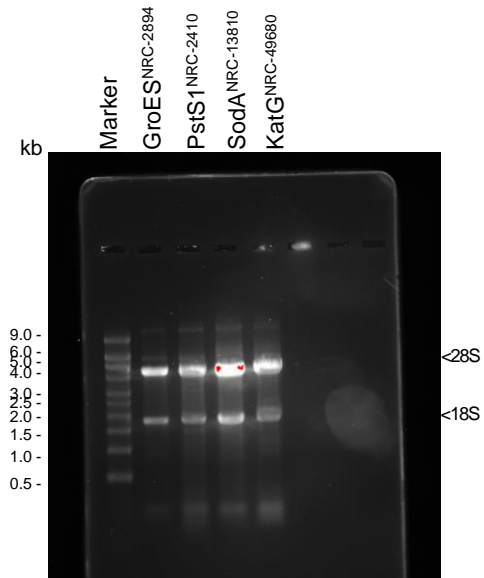


Supplemental

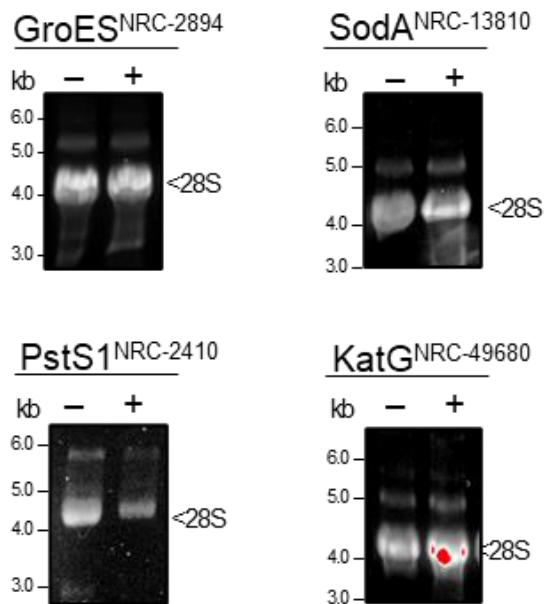
Final Fig 1s-C



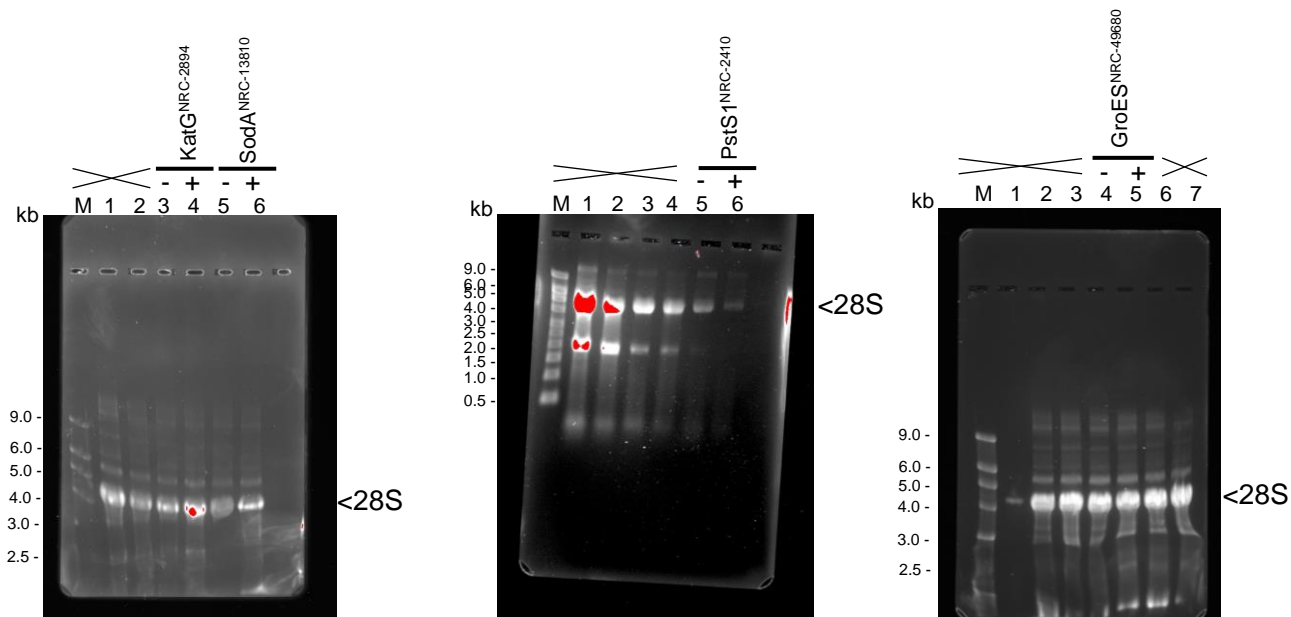
Original gel/blot pictures



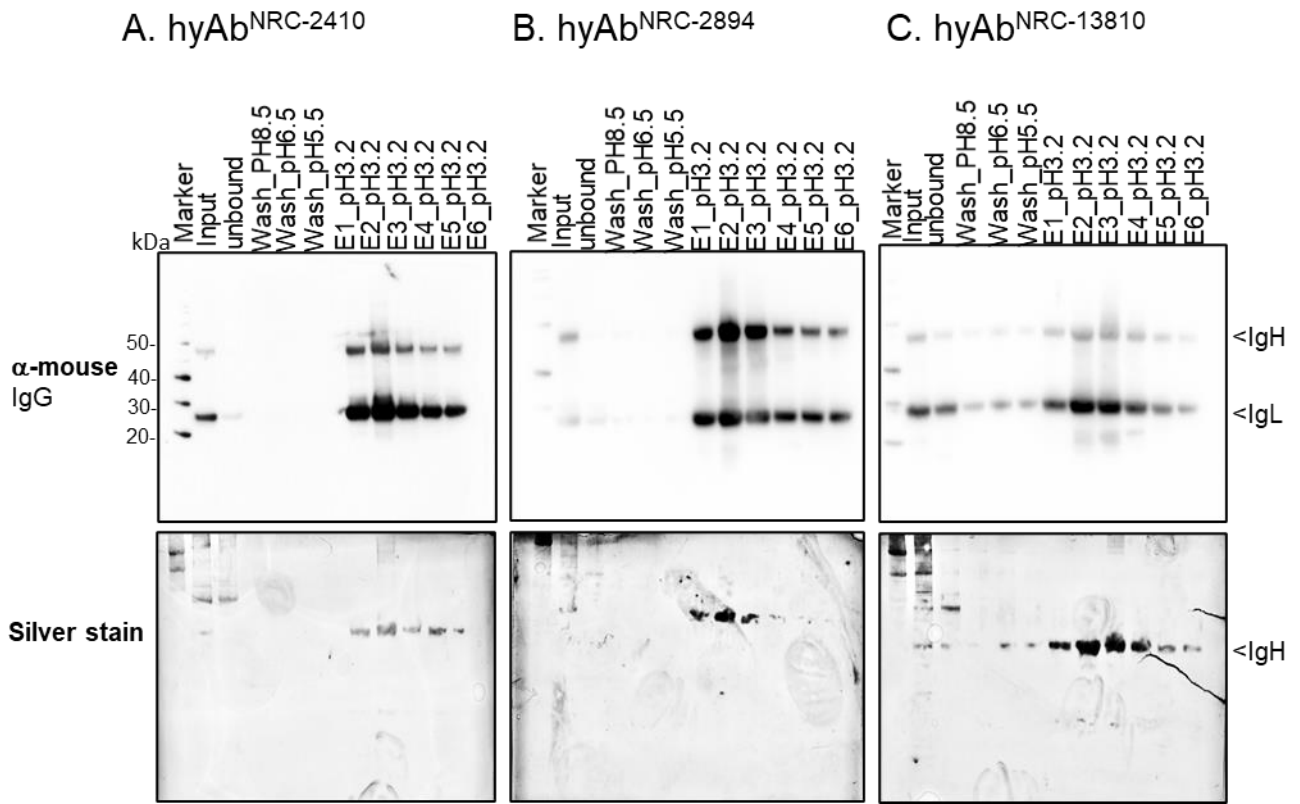
Final Fig 1s-D



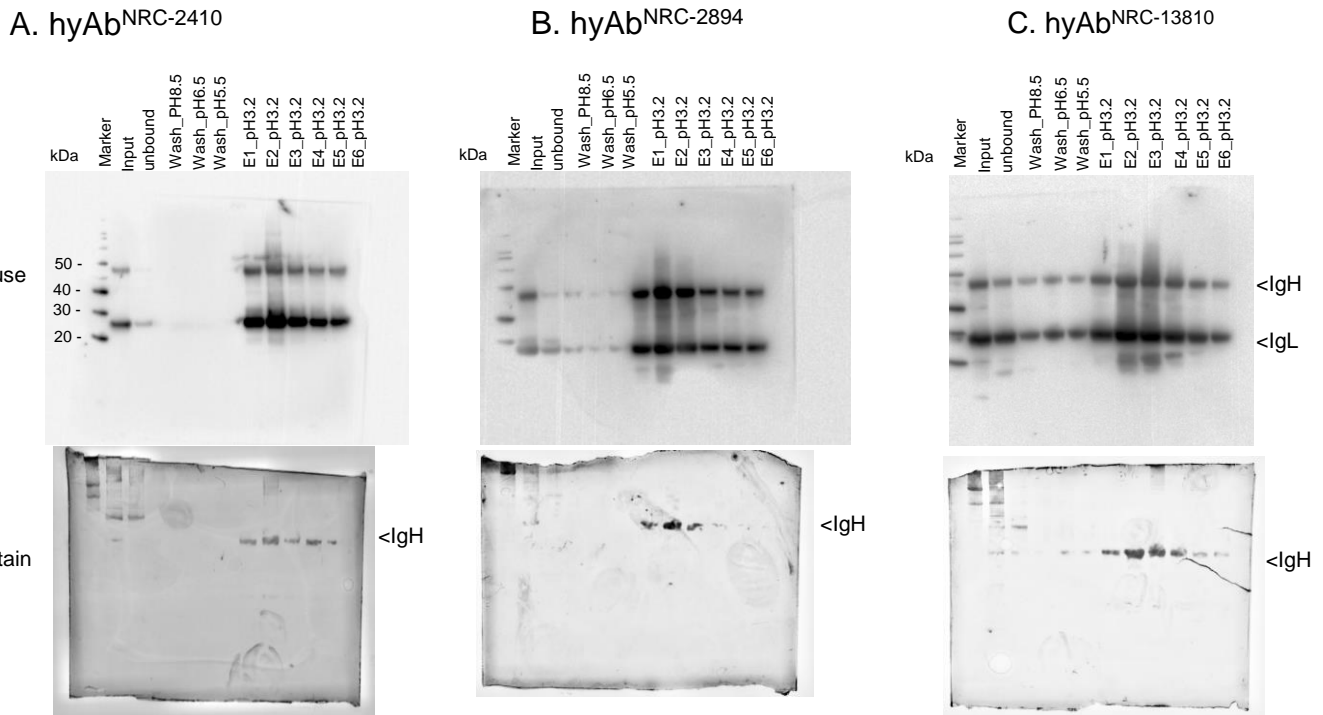
Original gel/blot pictures



Final Fig 3s

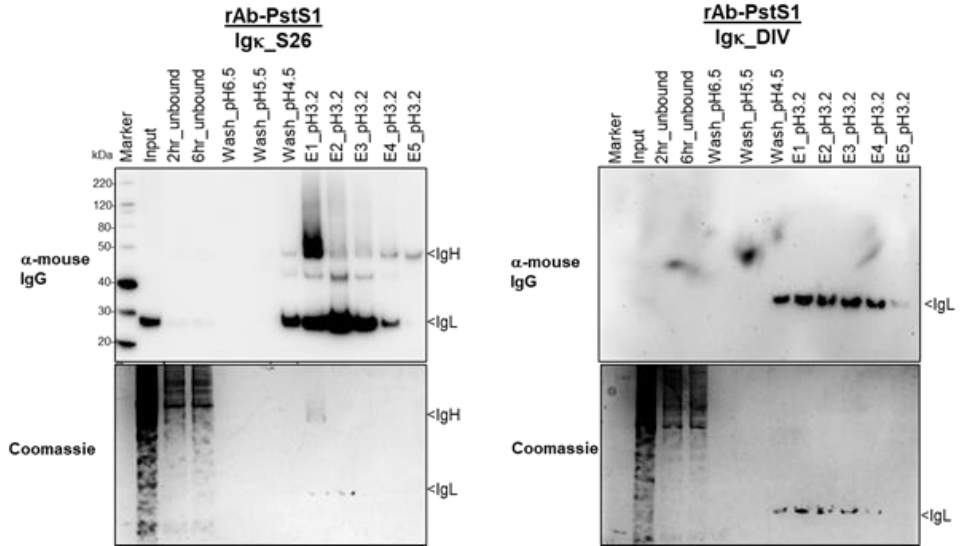


Original gel/blot pictures



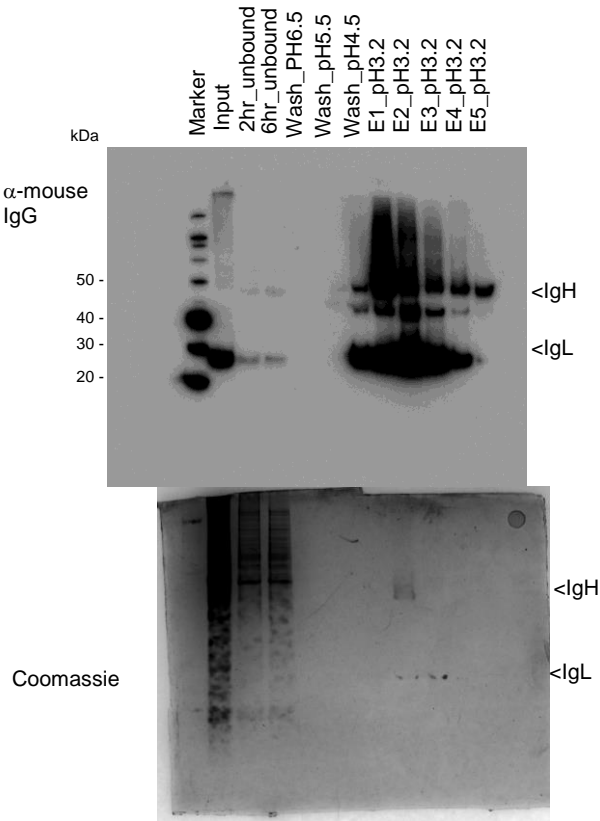
Top α-mouse IgG panel lists the blots developed by ECL and captured by Bio-Rad Image Lab 6.0 with adjustable brightness transformation. The image of the original blots is shown with higher saturated pixels than the final figures for an easy view of the gel boundary. Note that every image is from a whole, un-crop gel.

Final Figure 4s-A

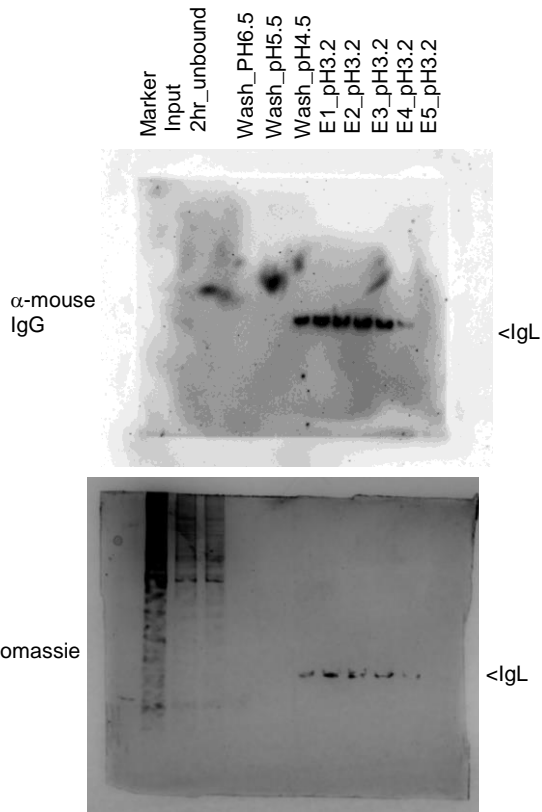


Original gel/blot pictures

rAb: PstS1 Igκ_S26

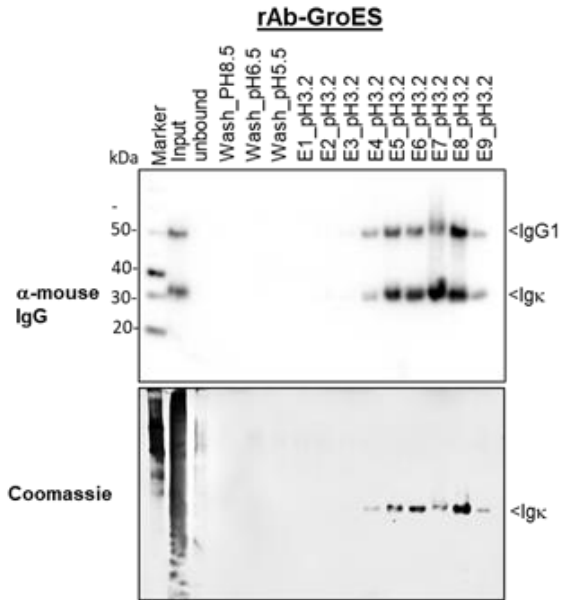


rAb: PstS1 Igκ_DIV

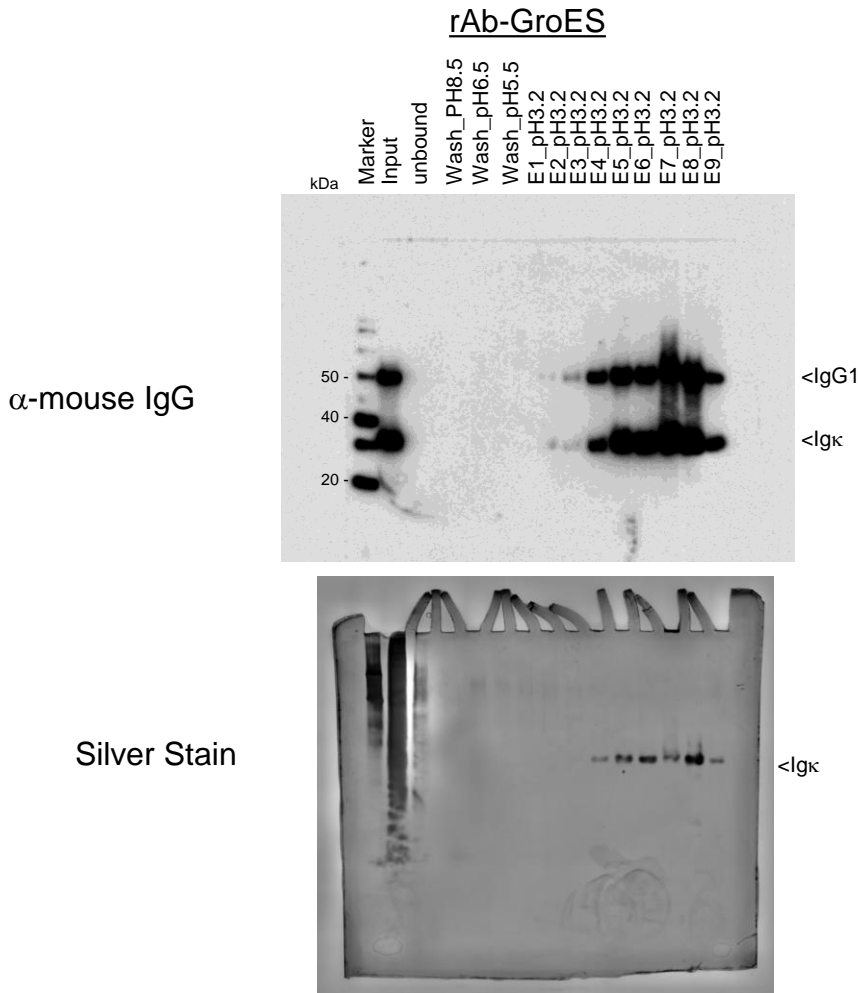


Top α -mouse IgG panel lists the blots developed by ECL and captured by Bio-Rad Image Lab 6.0 with adjustable brightness transformation. The image of the original blots is shown with higher saturated pixels than the final figures for an easy view of the gel boundary. Note that every image is from a whole, un-crop gel.

Final Figure 4s-B

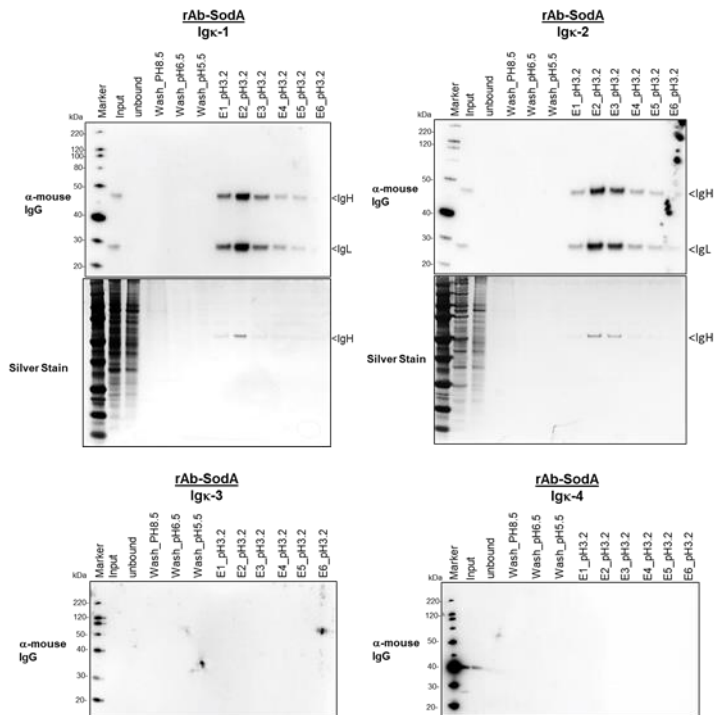


Original gel/blot pictures

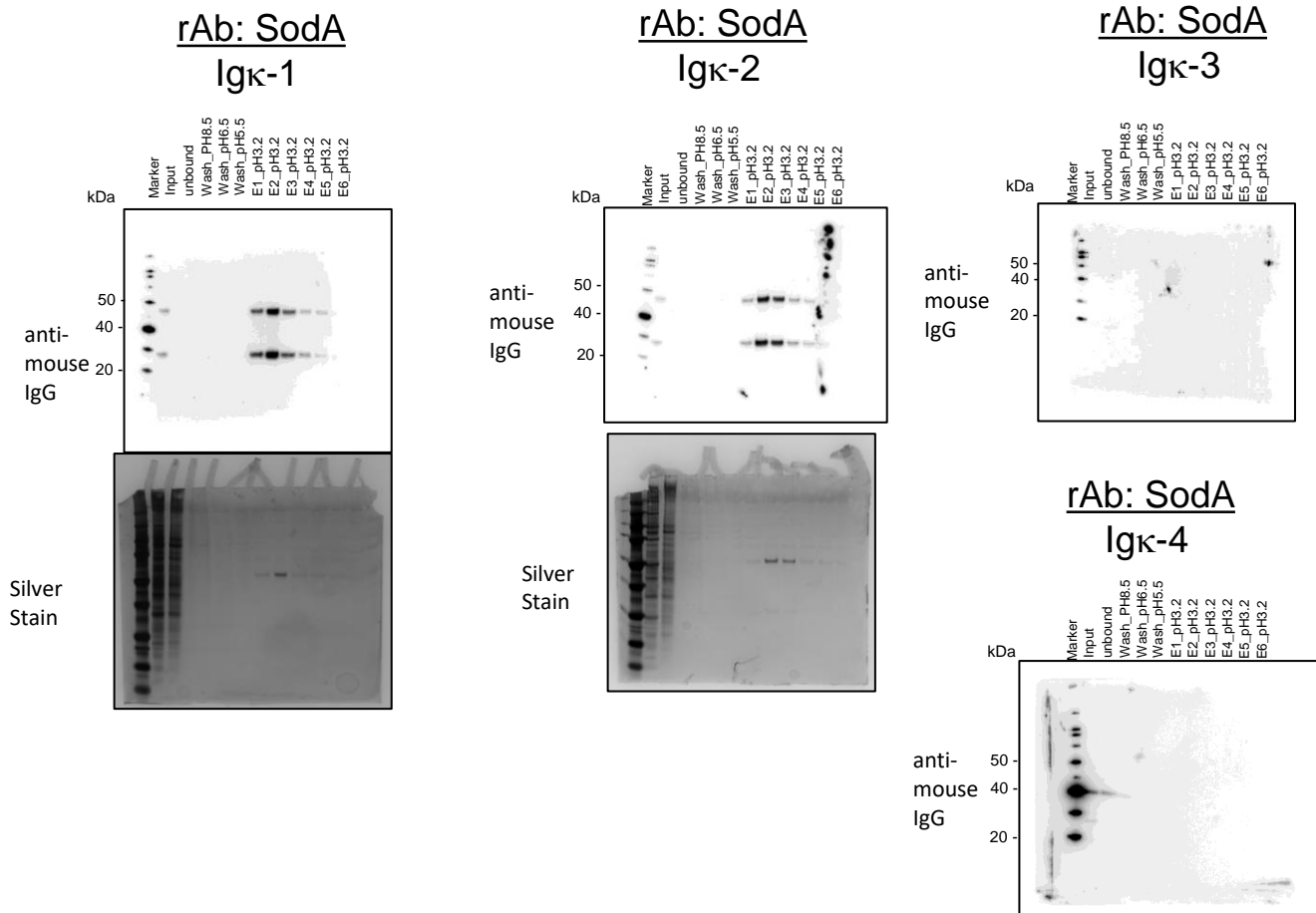


Top α-mouse IgG panel lists the blots developed by ECL and captured by Bio-Rad Image Lab 6.0 with adjustable brightness transformation. The image of the original blots is shown with higher saturated pixels than the final figures for an easy view of the gel boundary. Note that every image is from a whole, un-crop gel.

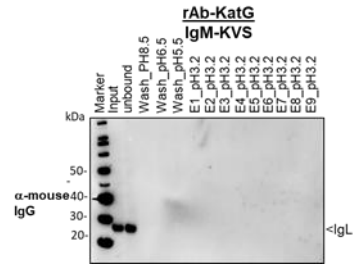
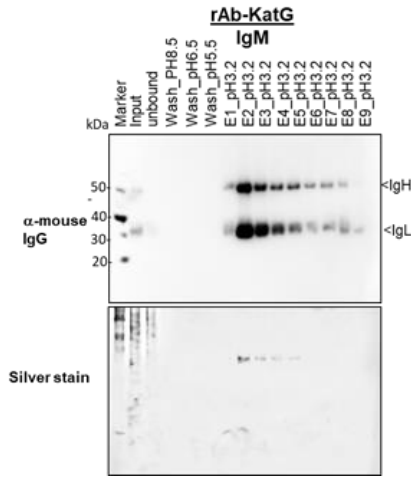
Final Fig 4s-C



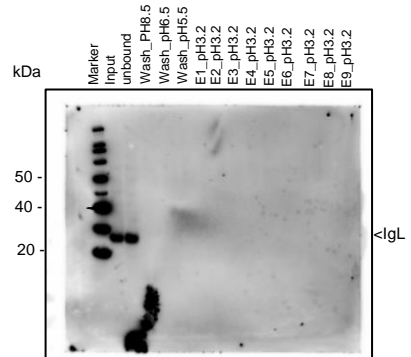
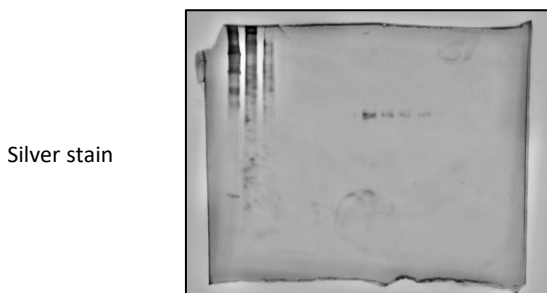
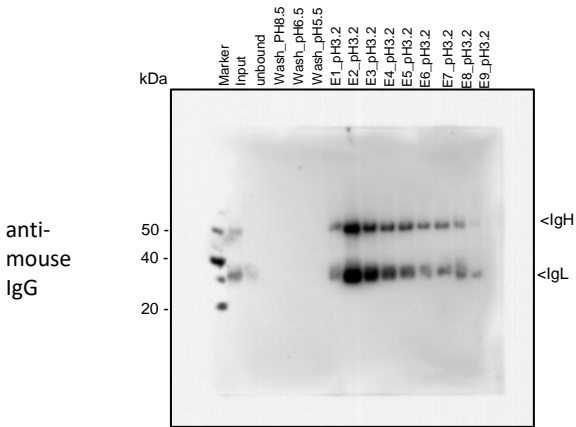
Original gel pictures



Final Figure 4s-D

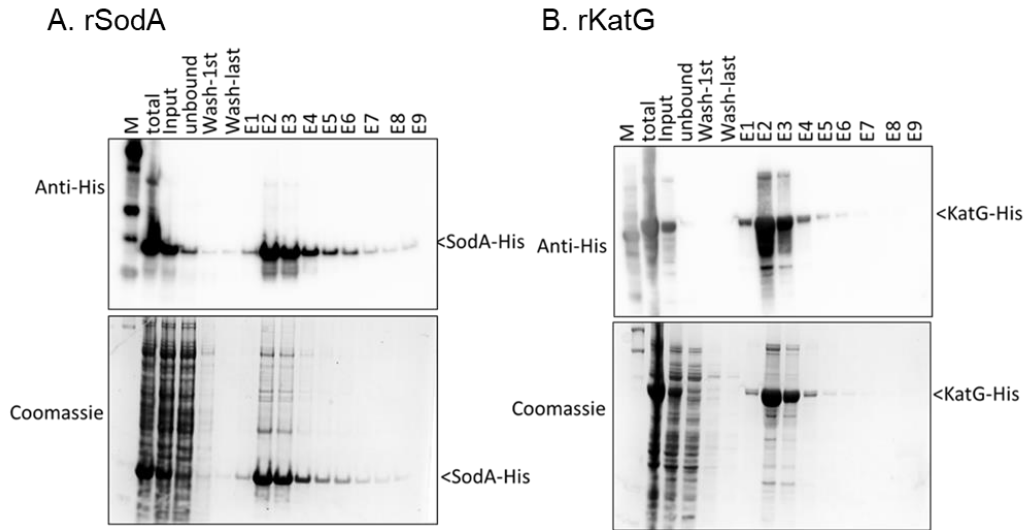


Original gel/blot pictures

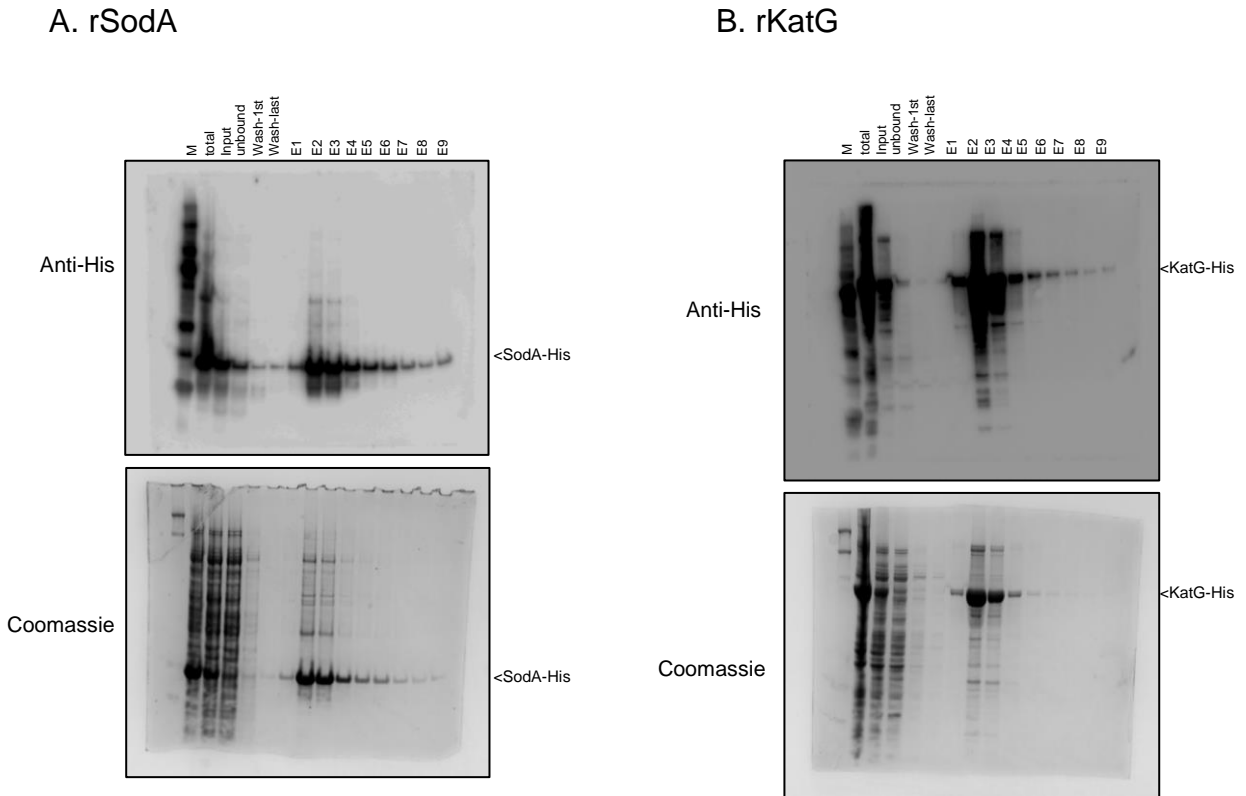


Top α -mouse IgG panel lists the blots developed by ECL and captured by Bio-Rad Image Lab 6.0 with adjustable brightness transformation. The image of the original blots is shown with higher saturated pixels than the final figures for an easy view of the gel boundary. Note that every image is from a whole, un-crop gel.

Final Figure 5s-A & B



Original gel/blot pictures



Top α -mouse IgG panel lists the blots developed by ECL and captured by Bio-Rad Image Lab 6.0 with adjustable brightness transformation. The image of the original blots is shown with higher saturated pixels than the final figures for an easy view of the gel boundary. Note that every image is from a whole, un-crop gel.