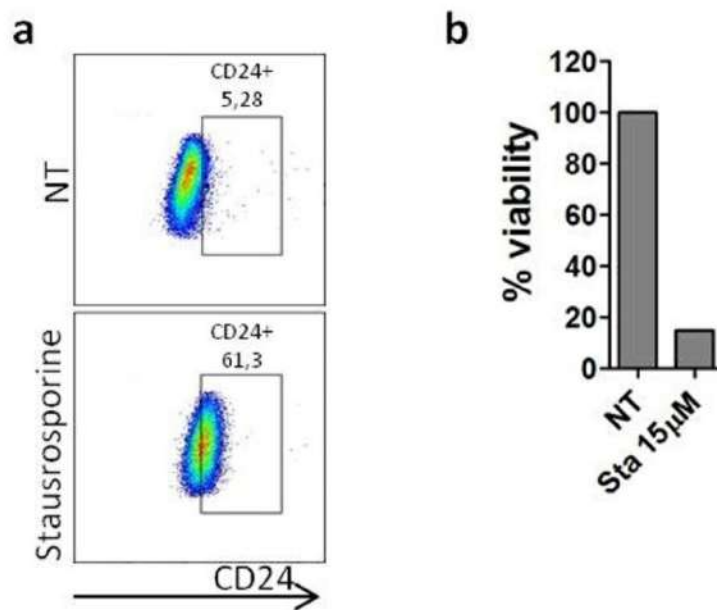


Supplementary figure 1

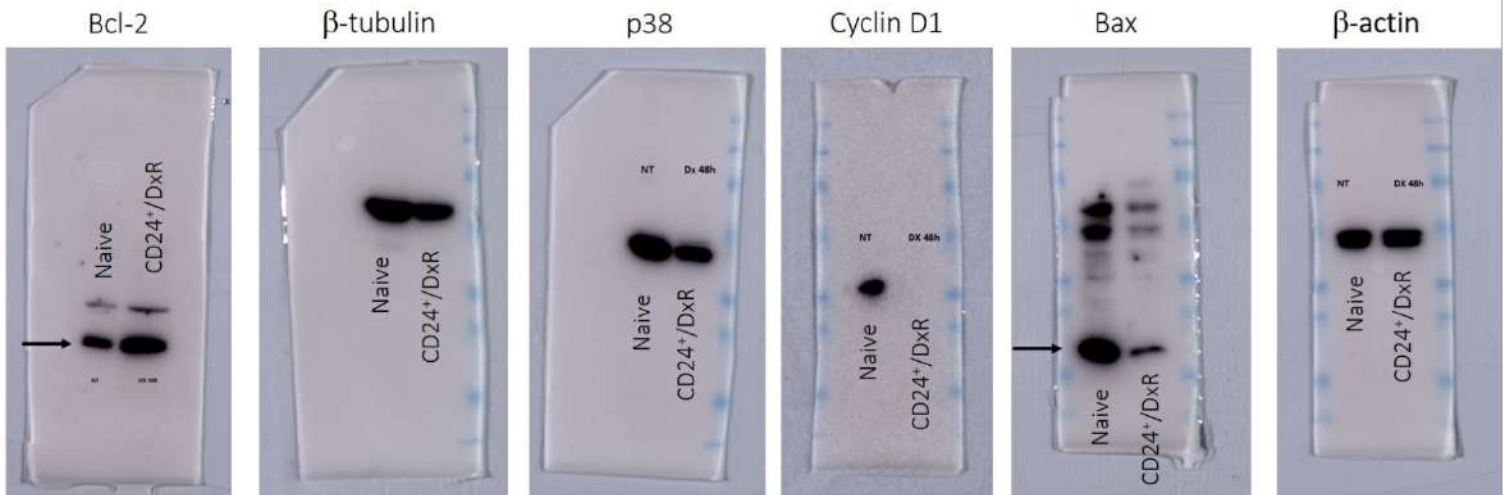


Supplementary figure 1 - Staurosporine induces CD24 translocation in MDA-MB-231 cells.

(a) Flow cytometry analysis of CD24 cell localization after staurosporine treatment. MDA-MB-231 cells were treated with staurosporine (15µM) for 4h. Then, an extracellular staining was performed using anti-CD24/FITC. Pseudocolor plots are representative of triplicates.

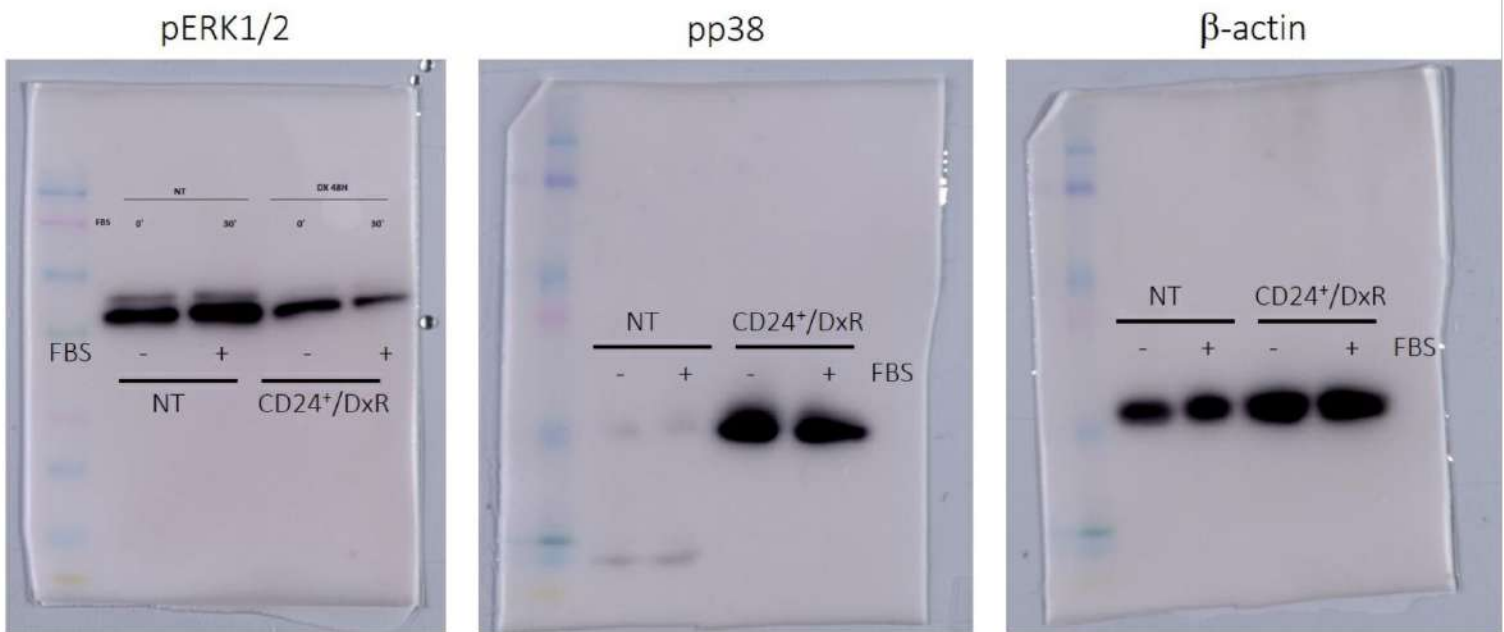
(b) MDA-MB-231 cells were treated with staurosporine (15µM) for 24h and cell viability was measured by MTT assay. Data represents means of triplicates.

Supplementary figure 2



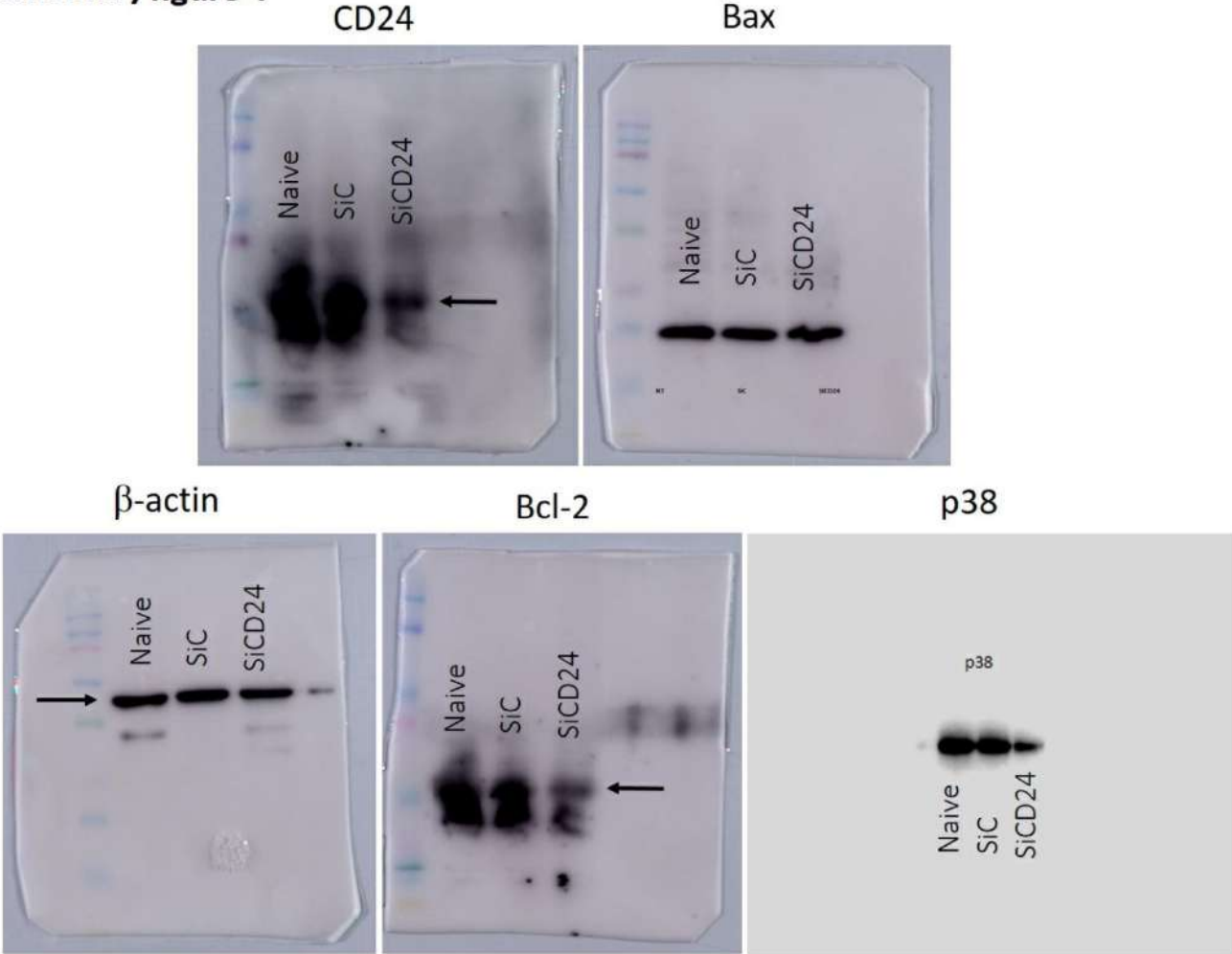
Supplementary figure 2 – Full length blots corresponding to the figure 3c of the manuscript.

Supplementary figure 3



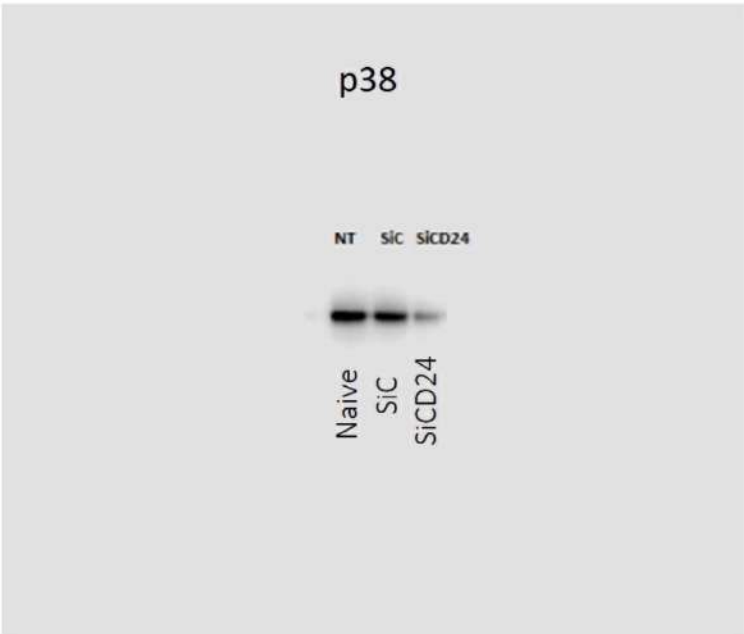
Supplementary figure 3 – Full length blots corresponding to the figure 3d of the manuscript.

Supplementary figure 4



Supplementary figure 4 – Full length blots corresponding to the figure 3e of the manuscript.

Supplementary figure 4.2 (variable exposure)



Supplementary figure 4.2 – Full length blots corresponding to the figure 3e of the manuscript.

Supplementary figure 5

Cyclin D1



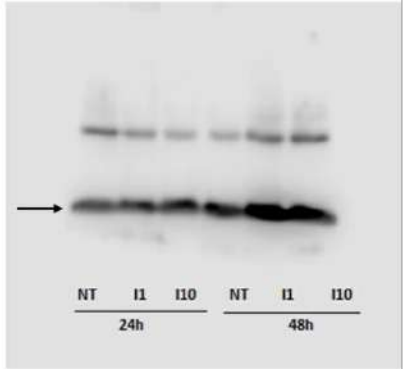
Bcl-2



β -tubulin

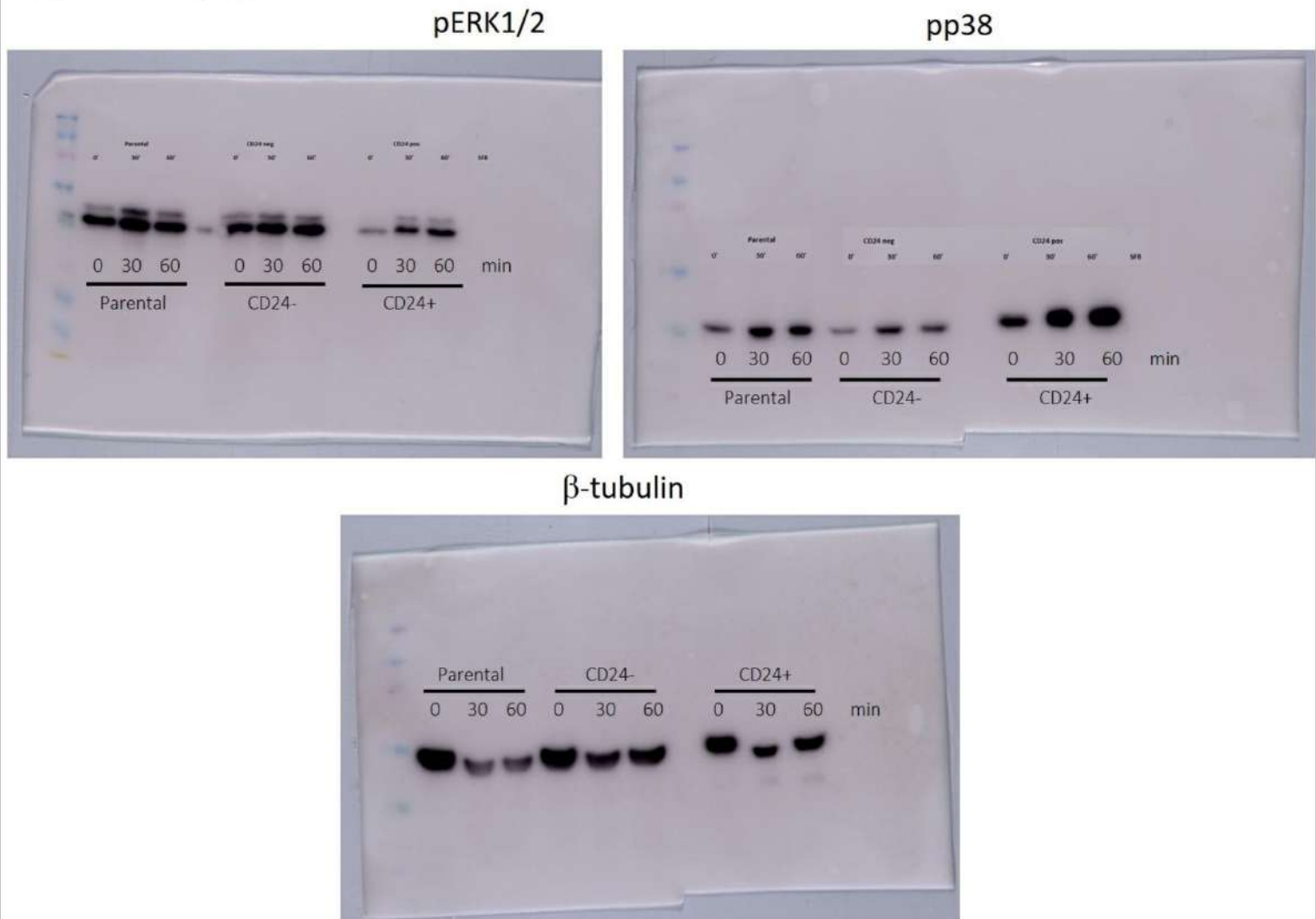


Bax



Supplementary figure 5 – Full length blots corresponding to the figure 3j of the manuscript.

Supplementary figure 6

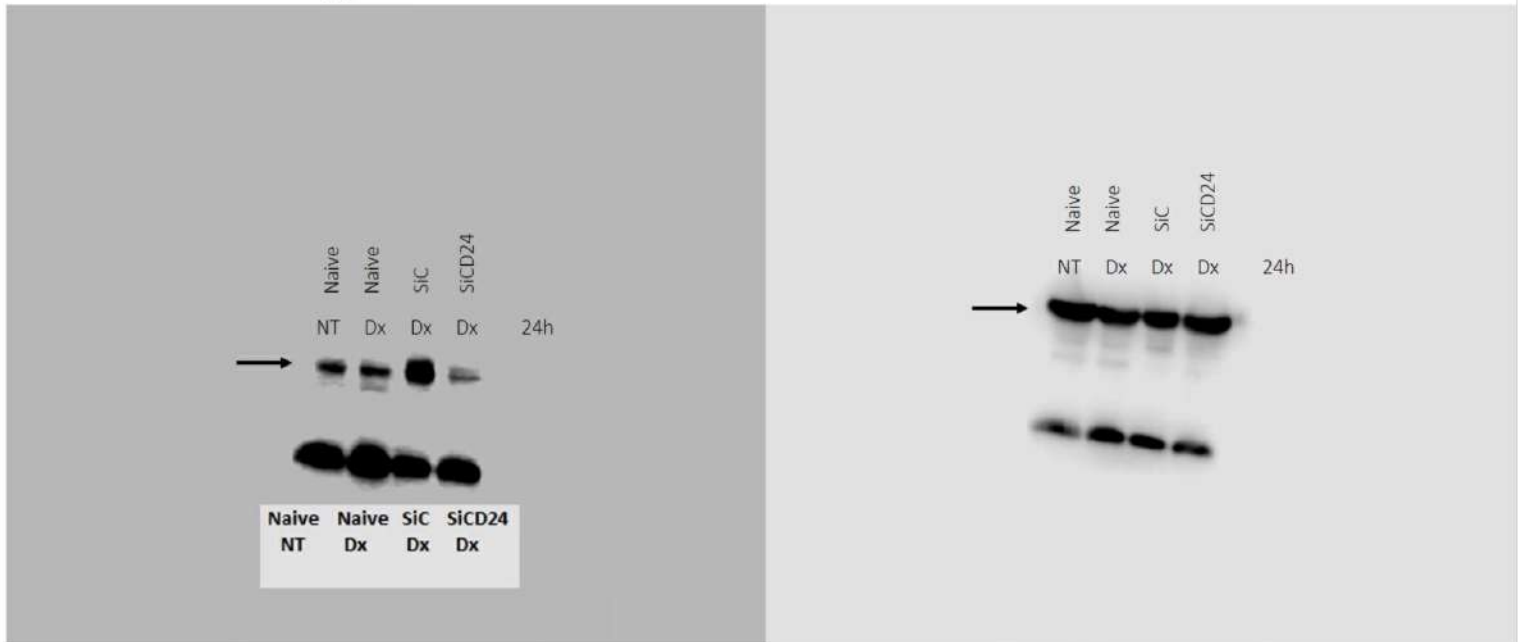


Supplementary figure 6 – Full length blots corresponding to the figure 4a of the manuscript.

Supplementary figure 7

pp38

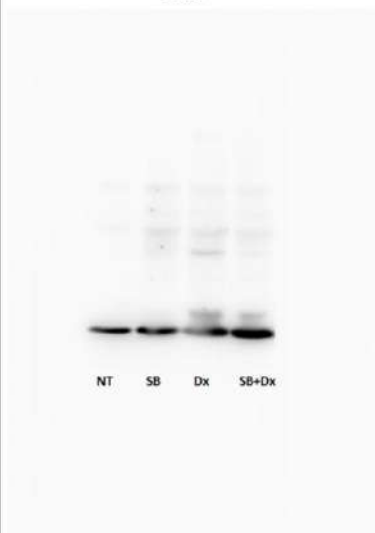
β -tubulin



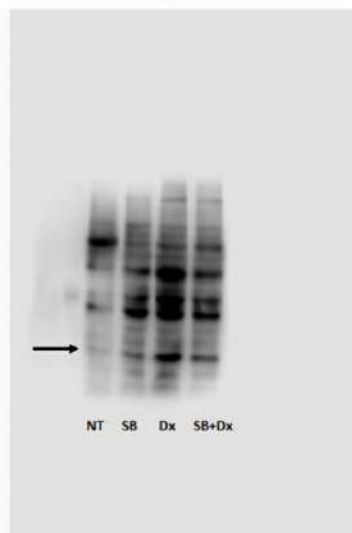
Supplementary figure 7 – Full length blots corresponding to the figure 4c of the manuscript.

Supplementary figure 8

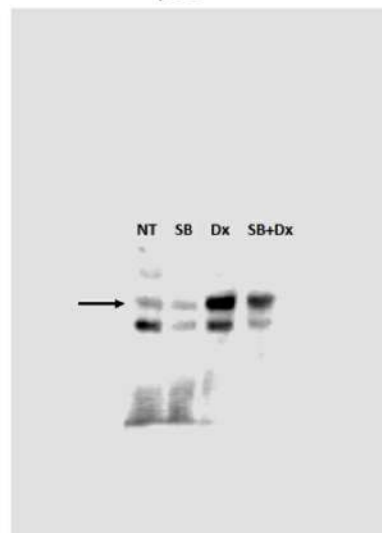
Bax



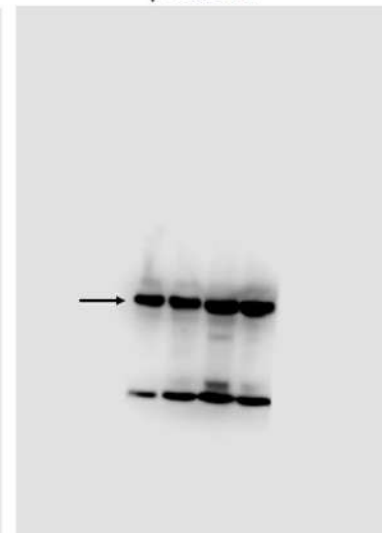
Bcl-2



p53



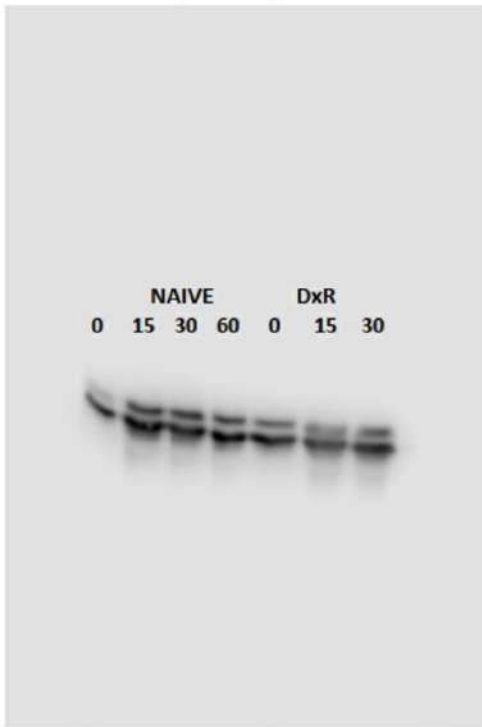
β -tubulin



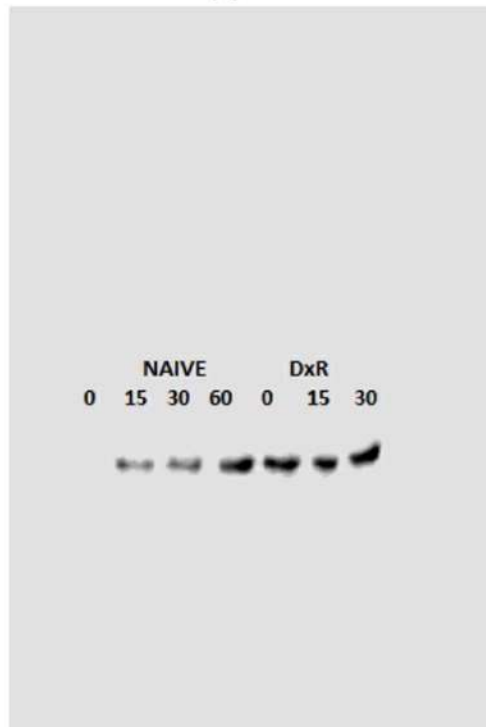
Supplementary figure 8 – Full length blots corresponding to the figure 4g of the manuscript.

Supplementary figure 9

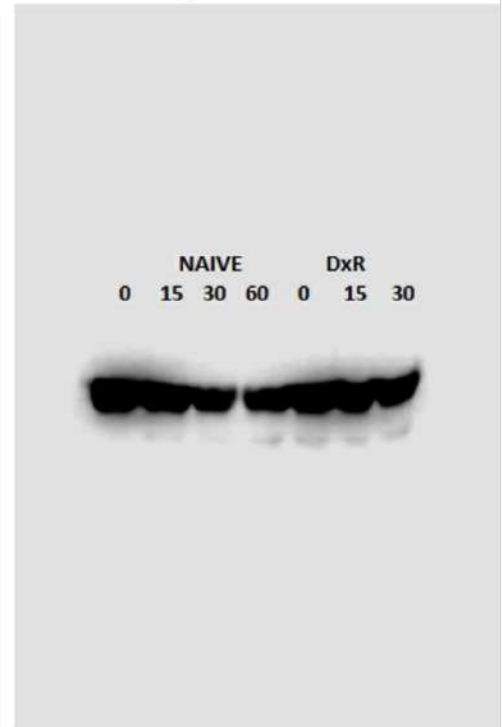
pERK1/2



pp38

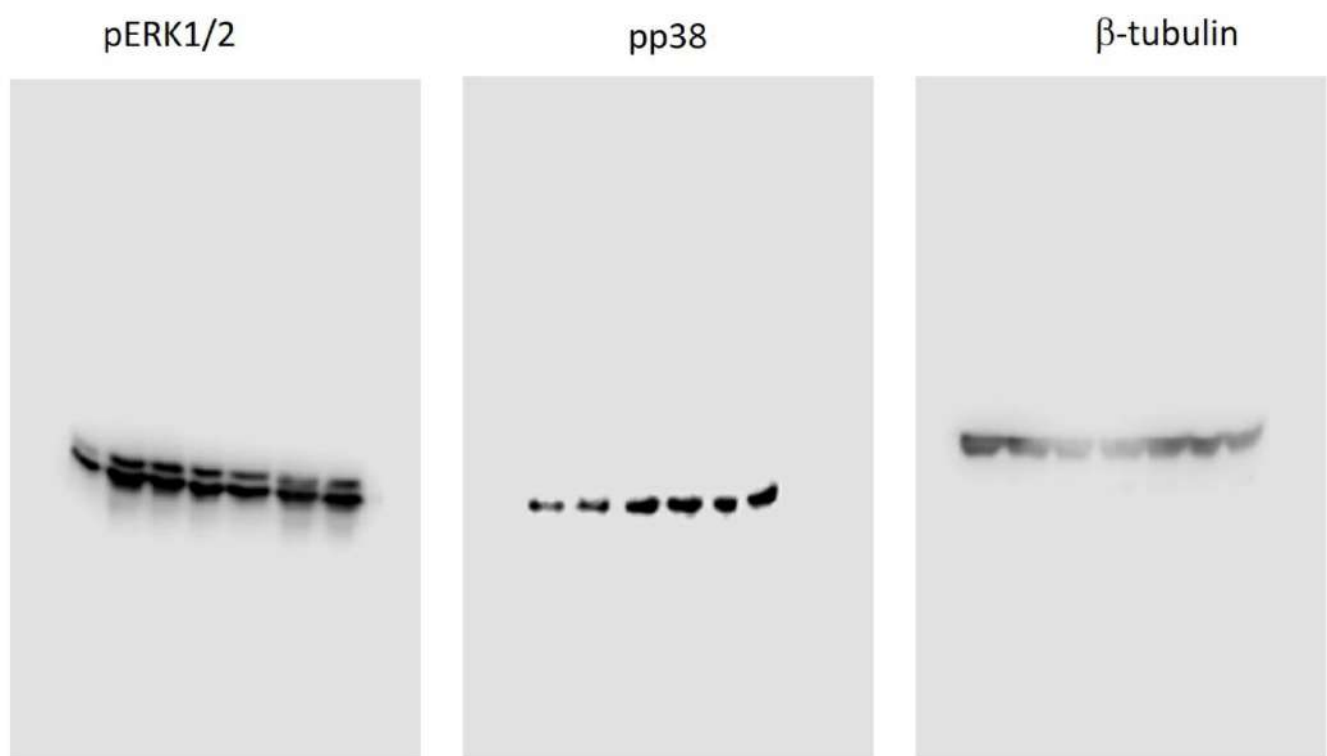


β -tubulin



Supplementary figure 9 – Full length blots corresponding to the figure 5e of the manuscript.

Supplementary figure 9.2 (variable exposure)



Supplementary figure 9.2 – Full length blots corresponding to the figure 5e of the manuscript.