

Supplementary Material

Ask the Locals:

A Community-Informed Analysis of Perceived Marine Environment Quality over Time in Palawan, Philippines

Joel D.C. Sumeldan^{1*}, Isabel Richter², Arlene L. Avillanosa¹, Hernando P. Bacosa^{1,3}, Lota A. Creencia¹, Sabine Pahl^{2,4}

¹College of Fisheries and Aquatic Sciences, Western Philippines University, Puerto Princesa City, Palawan, Philippines

²School of Psychology, University of Plymouth, Drake Circus, Plymouth, Devon, United Kingdom

³Department of Biological Sciences, Mindanao State University-Iligan Institute of Technology, Iligan, Philippines

⁴Urban and Environmental Psychology Group, Institute for the Psychology of Cognition, Emotion and Methods, Faculty of Psychology, University of Vienna, Austria

Figure S1. Hand drawn maps from Focus Group Discussion in Puerto Princesa City



Figure S2. Present perceptions across different education. Issues with ** are where high significant differences were observed ($p < 0.01$). Issues with * are where significant differences were observed ($p < 0.05$)

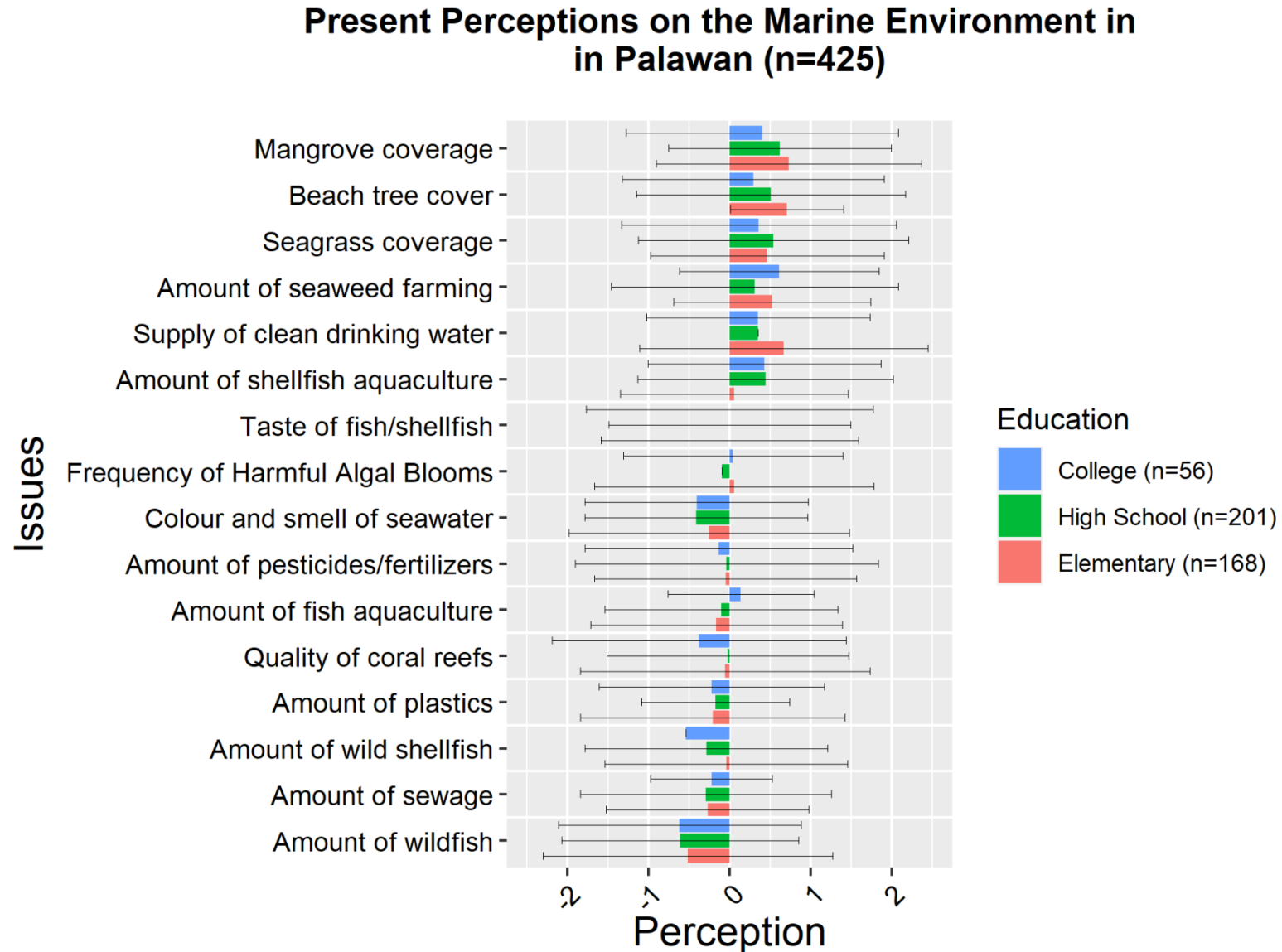


Figure S3. Present perceptions across different Income. Issues with ** are where high significant differences were observed ($p < 0.01$). Issues with * are where significant differences were observed ($p < 0.05$)

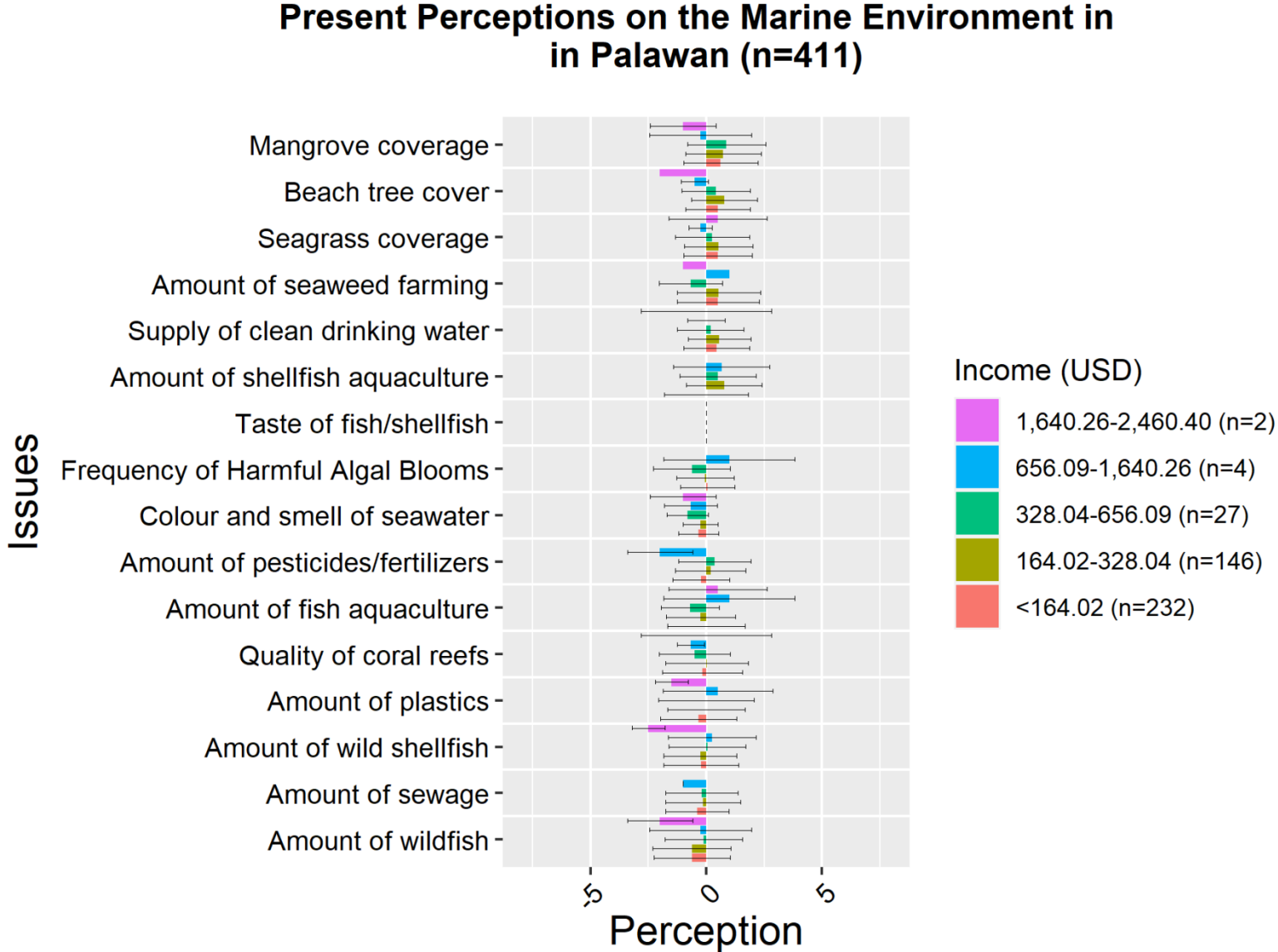


Figure S4. Present perceptions across different ages. Issues with ** are where high significant differences were observed ($p < 0.01$). Issues with * are where significant differences were observed ($p < 0.05$)

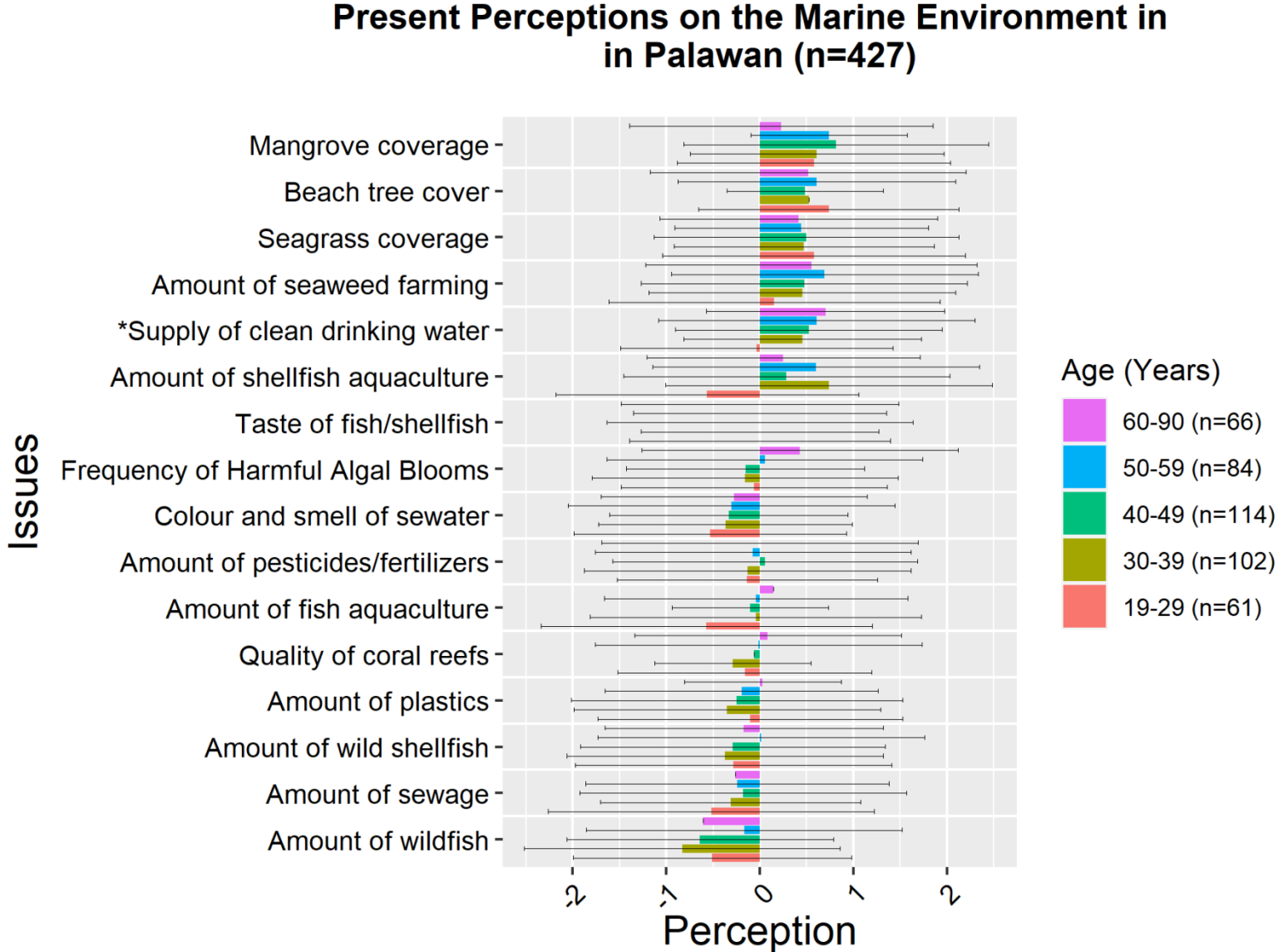


Figure S5. Present perceptions between different gender. Issues with ** are where high significant differences were observed ($p < 0.01$). Issues with * are where significant differences were observed ($p < 0.05$)

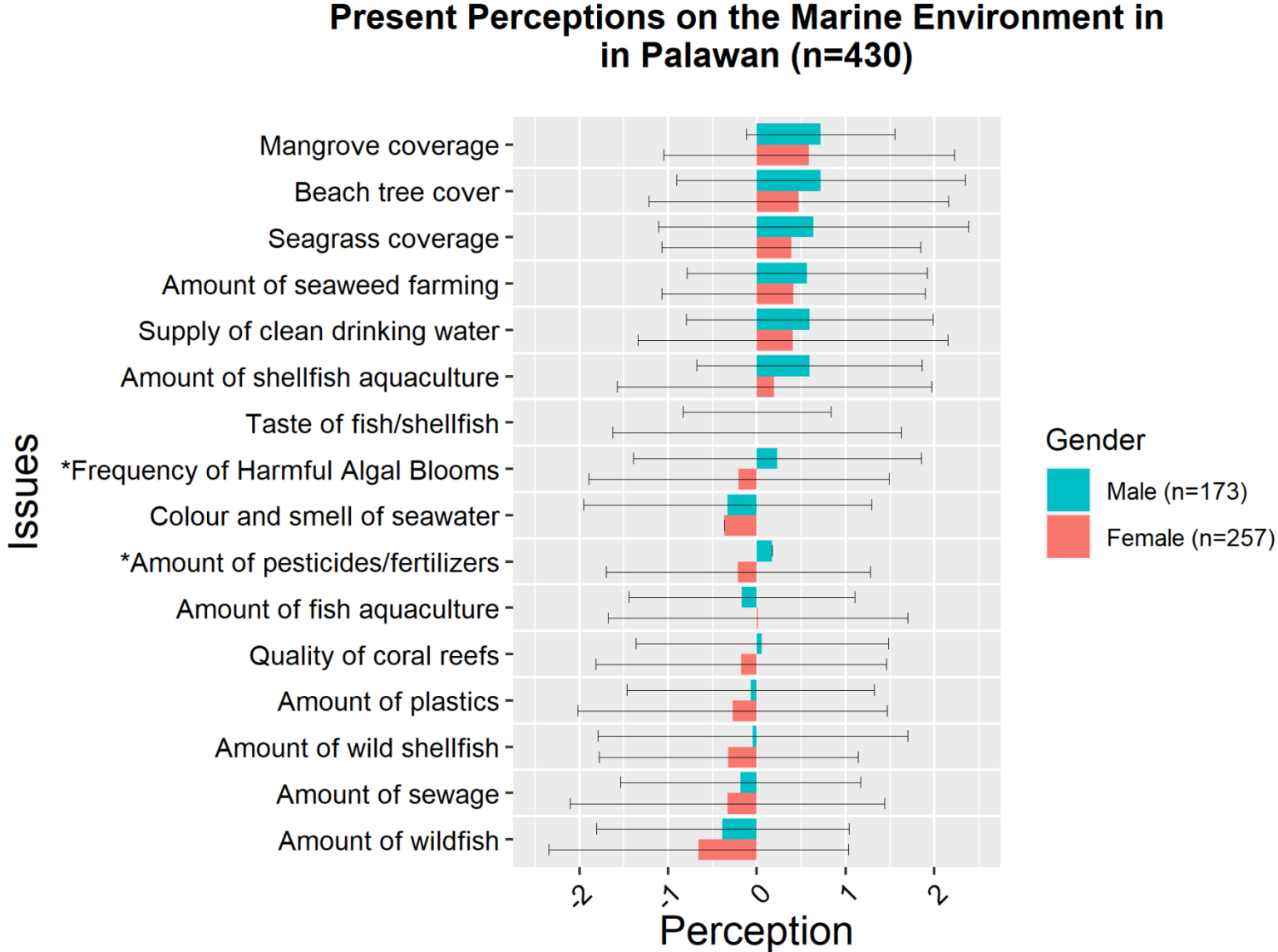


Figure S6. Future expectations between different gender. Issues with ** are where high significant differences were observed ($p < 0.01$). Issues with * are where significant differences were observed ($p < 0.05$)

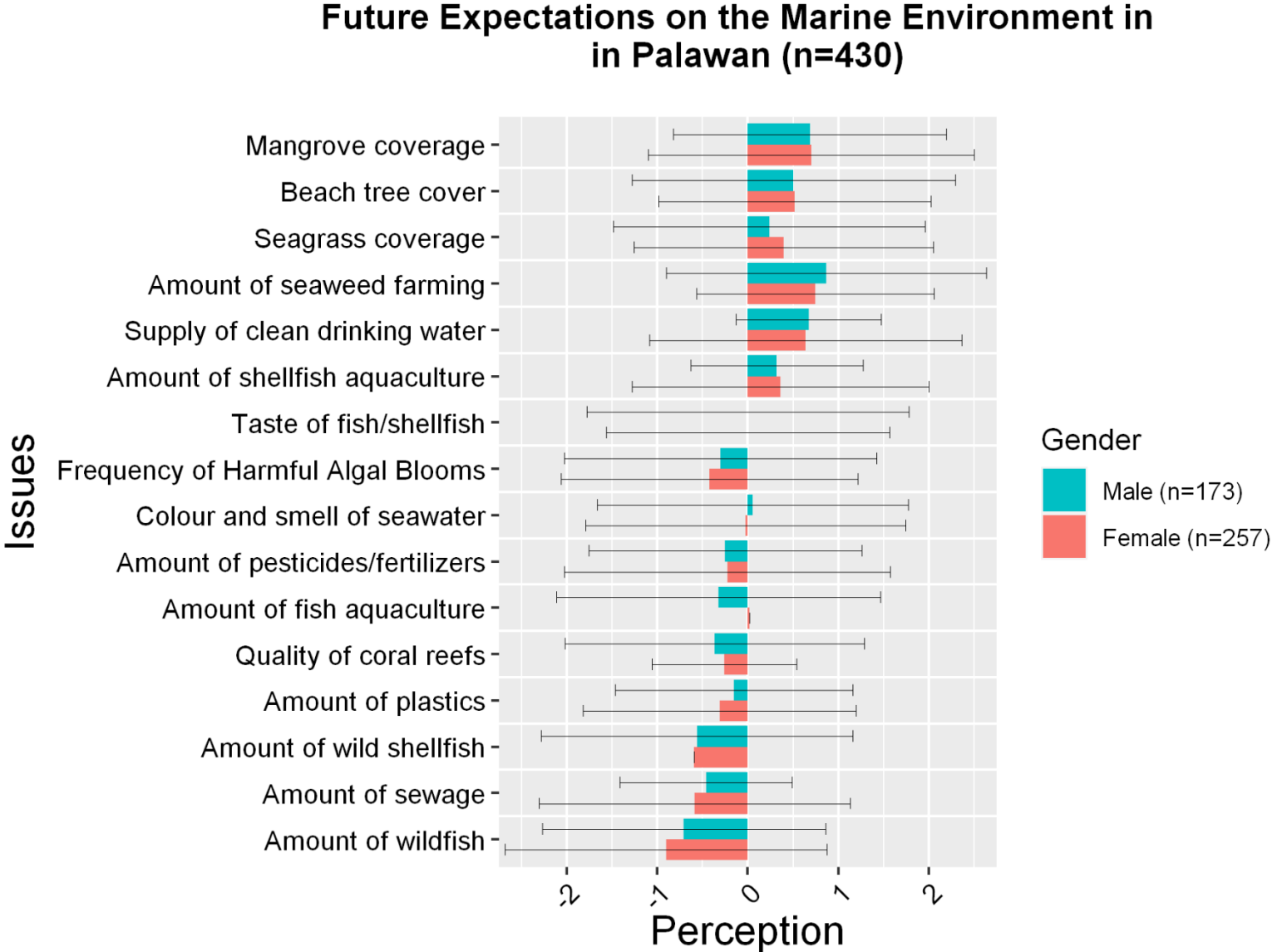


Figure S7. Future expectations across different Income. Issues with ** are where high significant differences were observed ($p < 0.01$). Issues with * are where significant differences were observed ($p < 0.05$)

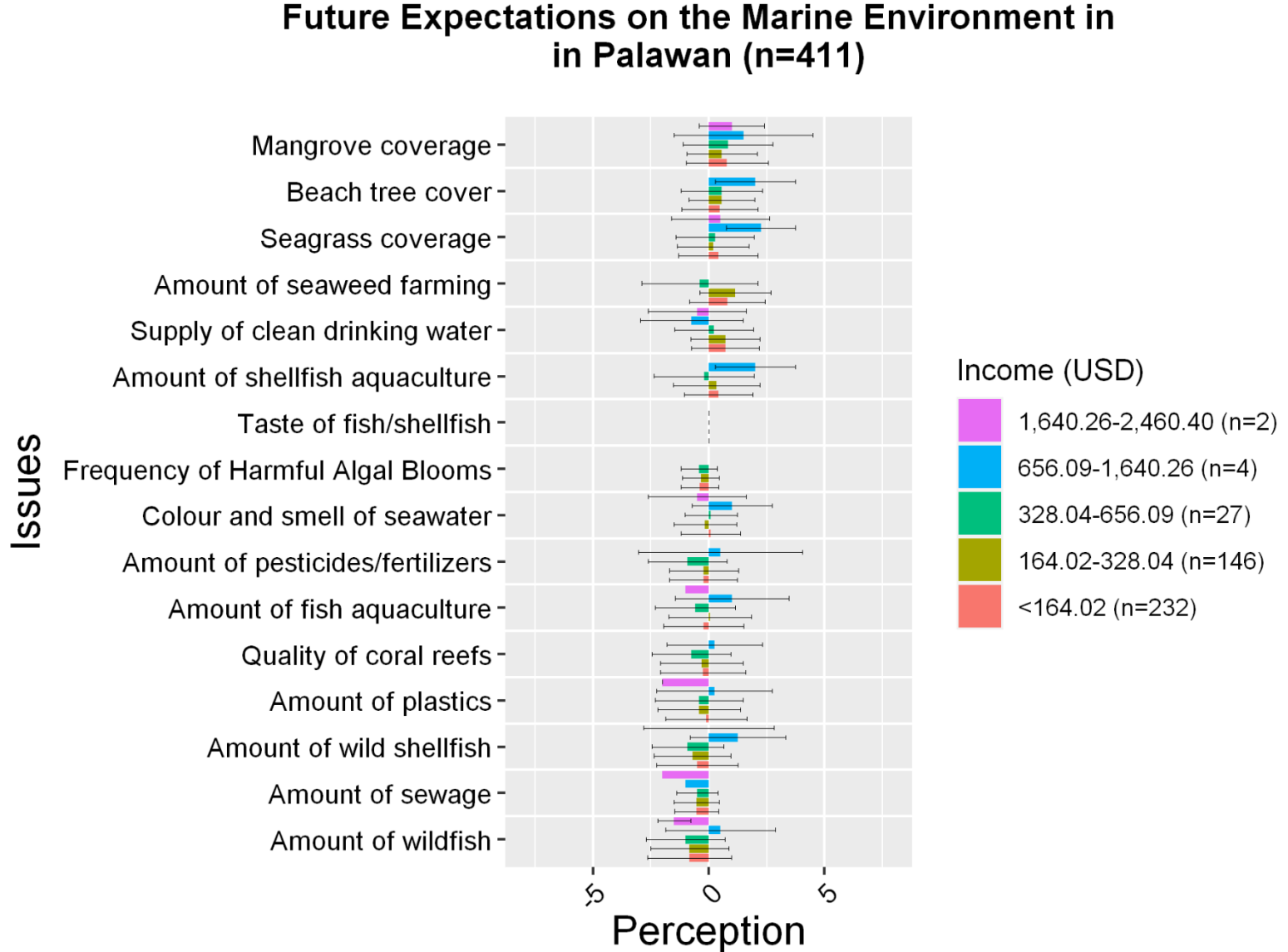


Figure S8. Future expectations across different age. Issues with ** are where high significant differences were observed ($p < 0.01$). Issues with * are where significant differences were observed ($p < 0.05$)

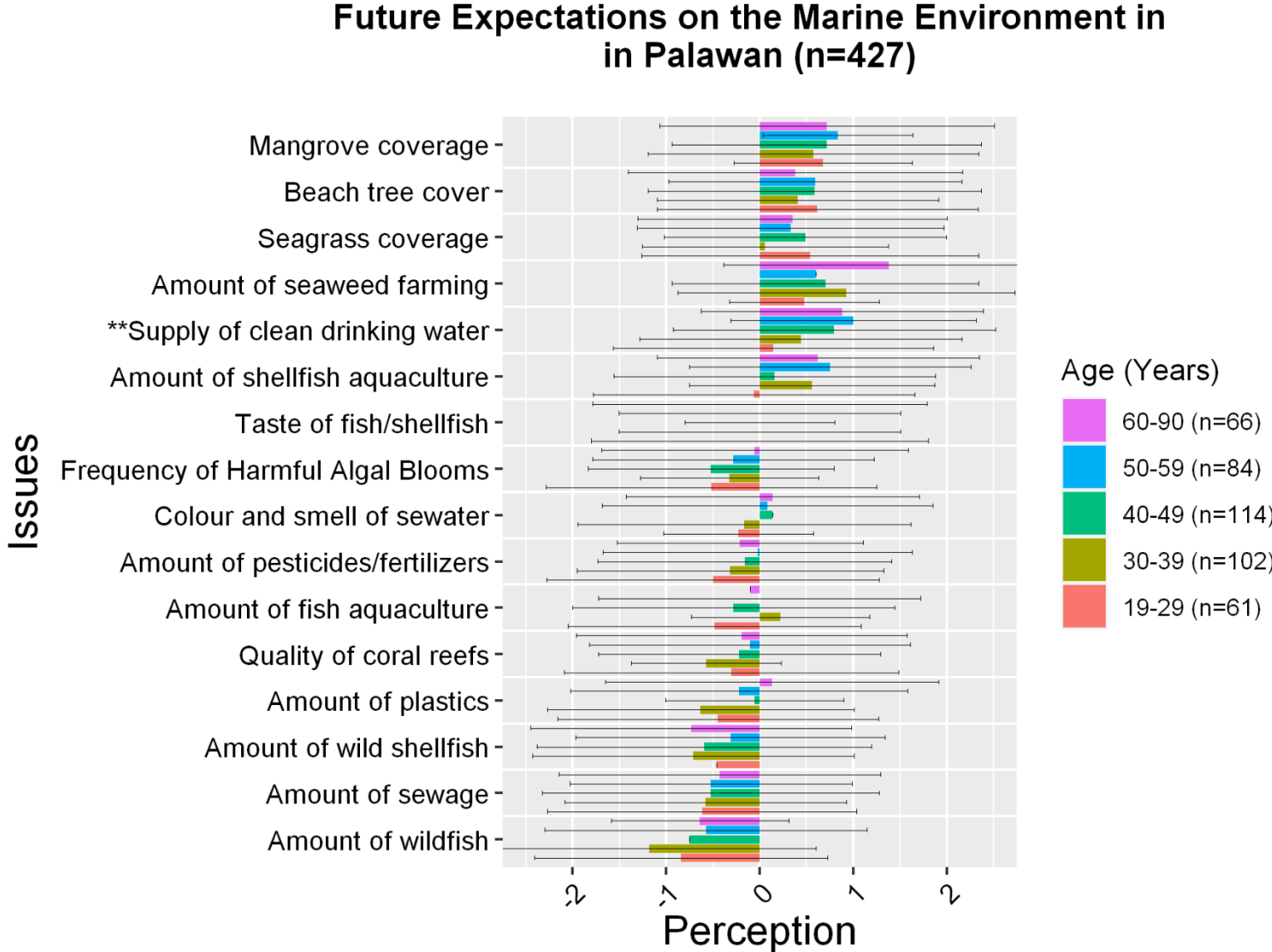


Figure S9. Future expectations across different education. Issues with ** are where high significant differences were observed ($p < 0.01$). Issues with * are where significant differences were observed ($p < 0.05$)

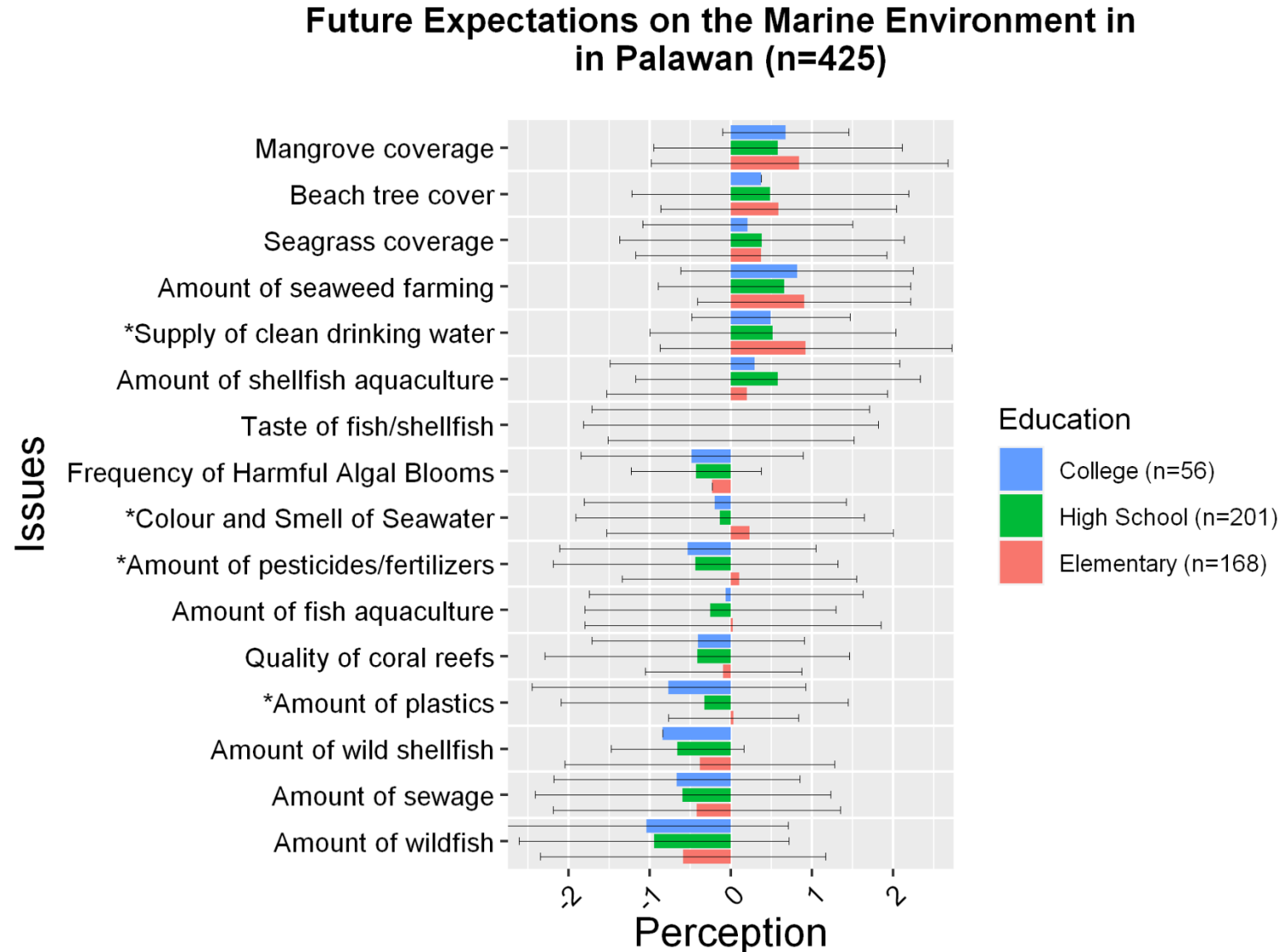


Figure S10. Correlation of present perception and future expectation

