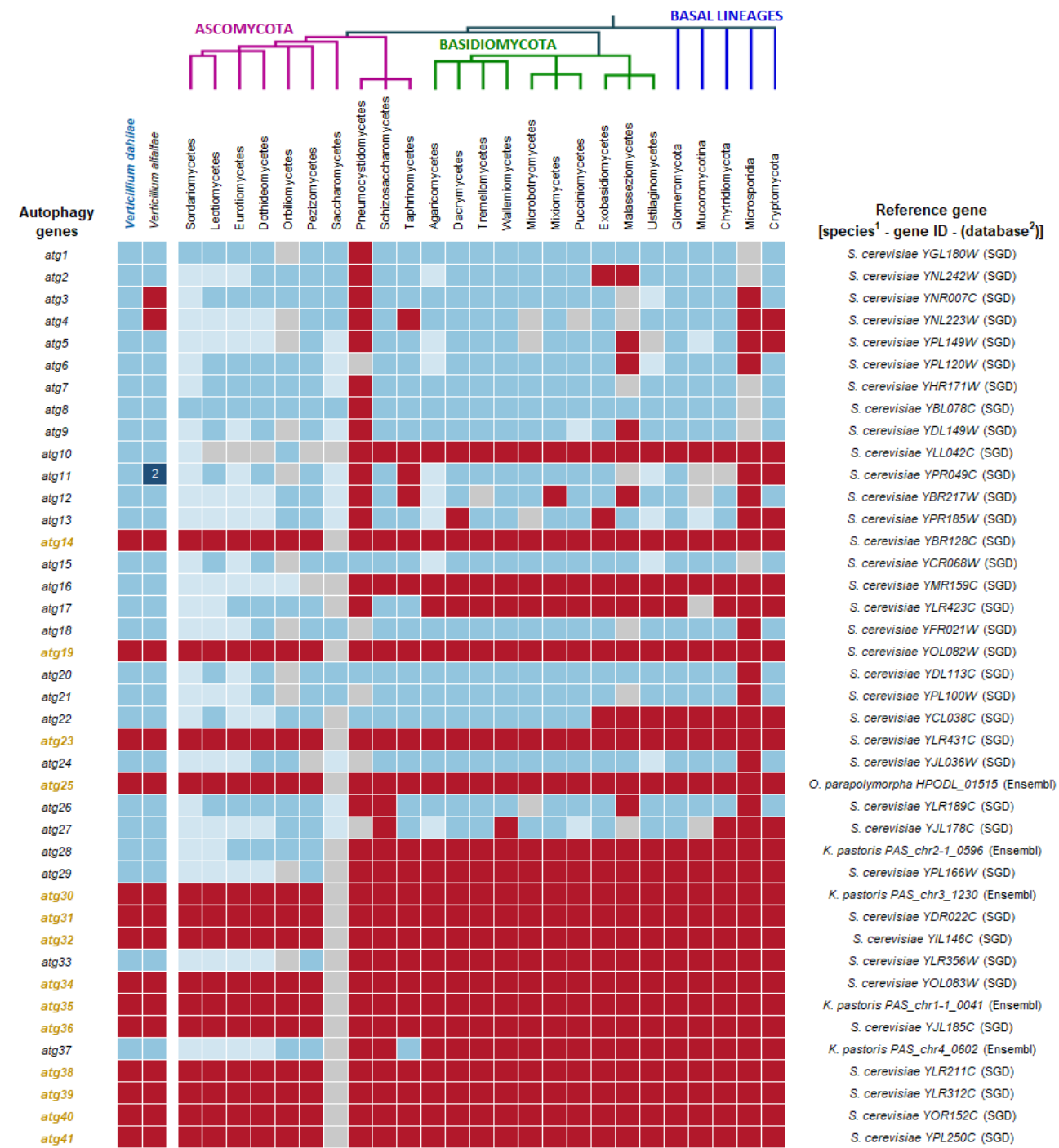


**Table S4.** *Verticillium dahliae* homologs of autophagy genes



atg (gold):  
Saccharomycetes-specific

present in all species examined  
 present in at least 75% of the species examined  
 present in fewer than 75% of the species examined  
 absent from all species examined  
2 duplicated (duplication is indicated only in *Verticillium* species)

<sup>1</sup> *Saccharomyces cerevisiae*  
*Ogataea parapolymorpha* (*Hansenula polymorpha*)  
*Komagataella pastoris* (*Pichia pastoris*)

<sup>2</sup> Saccharomyces Genome Database (SGD)  
([www.yeastgenome.org](http://www.yeastgenome.org))