

APPENDIX 3: ADDITIONAL TABLES & FIGURES FOR THE NETWORK ANALYSES

i) Network Analysis of BD & No BD

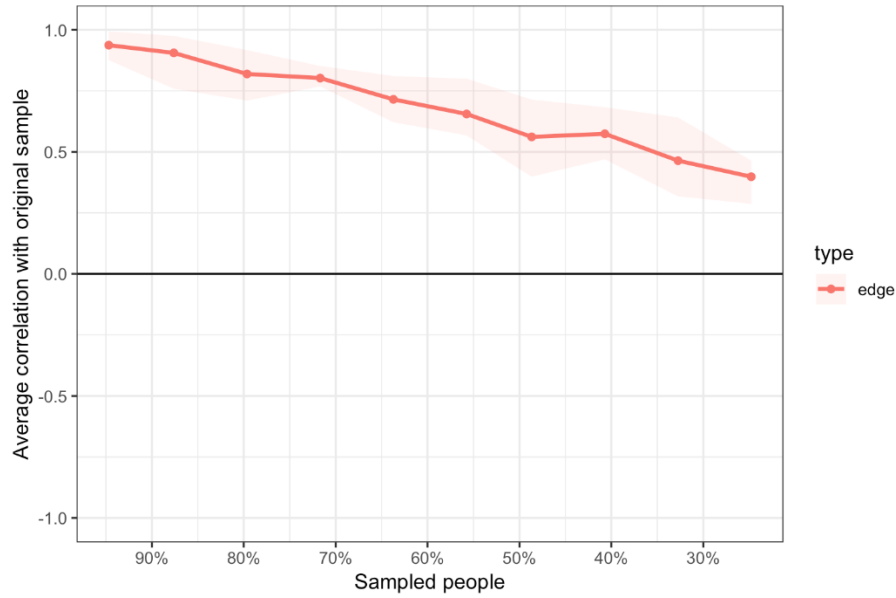
Table 1S: Centrality measures per variable (bold text indicates the ‘top 4’ i.e. the variables that differ most between the two networks)

Variable	No BD			BD		
	Betweenness	Closeness	Strength	Betweenness	Closeness	Strength
Nervous/Tense (D1)	-1.064	-1.809	-1.559	-0.369	-0.527	-0.486
Unhappy/Depressed (D2)	-1.064	-0.265	-0.434	0.107	0.200	-0.095
Feel Stressed (D3)	-0.195	-0.752	-0.356	-0.369	-0.234	-0.653
Feel Overwhelmed (D4)	-1.064	-1.483	-0.929	-1.560	-2.048	-1.597
Loss of Confidence (D5)	1.831	1.411	1.657	0.822	0.292	0.100
Hopelessness (D6)	-0.775	-0.321	-1.528	-1.084	-2.351	-1.956
Somatic Pain (D7)	-0.340	0.908	1.473	-0.369	0.456	-0.218
Hypersomnia (D8)	1.831	0.956	0.853	2.013	0.744	1.539
Fatigue (D9)	-0.340	0.515	0.138	-1.322	-0.707	-0.680
Impaired Sleep Quality (D10)	-0.775	0.923	0.679	-0.607	0.135	0.742
Impaired Concentration (D11)	0.384	0.781	-0.035	0.345	0.388	0.136
Anergia (D12)	-0.195	1.011	0.449	2.251	2.132	1.791
Feeling Elated (HM1)	0.963	0.232	0.632	-1.084	-0.708	-0.865
Increased Self-Esteem (HM2)	-0.485	-0.789	-0.495	0.107	-0.473	-0.837
Impaired Sleep (Reduced) HM3	-1.064	-2.004	-1.398	0.584	-0.013	-0.508
Increased Psychomotor Speed (HM4)	-0.485	-0.721	-1.183	-0.607	-0.020	0.576
Increased Activity (HM5)	0.239	-0.109	0.117	0.345	0.506	0.390
Hearing Voices when alone (P3)	2.121	0.933	1.176	0.822	0.881	1.607
Feeling Threatened by Others (P4)	0.094	0.139	-0.355	0.345	0.977	0.494
Thinking People are Against You (P5)	0.384	0.443	1.099	-0.369	0.369	0.519

Figure 1S: Edge Stability

In the following diagrams the solid lines represent the strength of correlation & the shaded areas indicate the 95% confidence intervals.

a) BD



b) NO BD

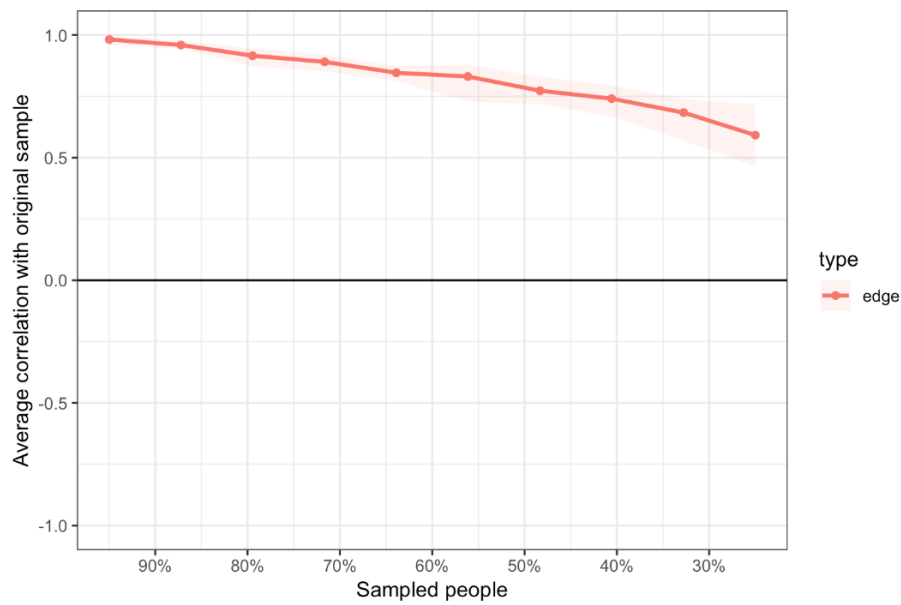
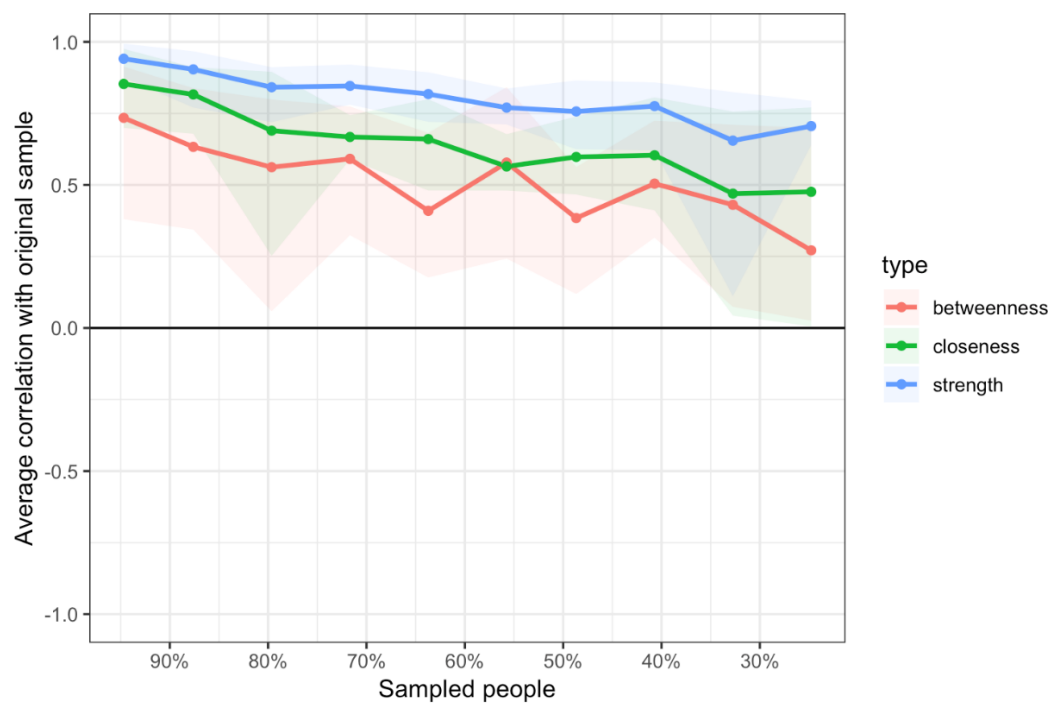
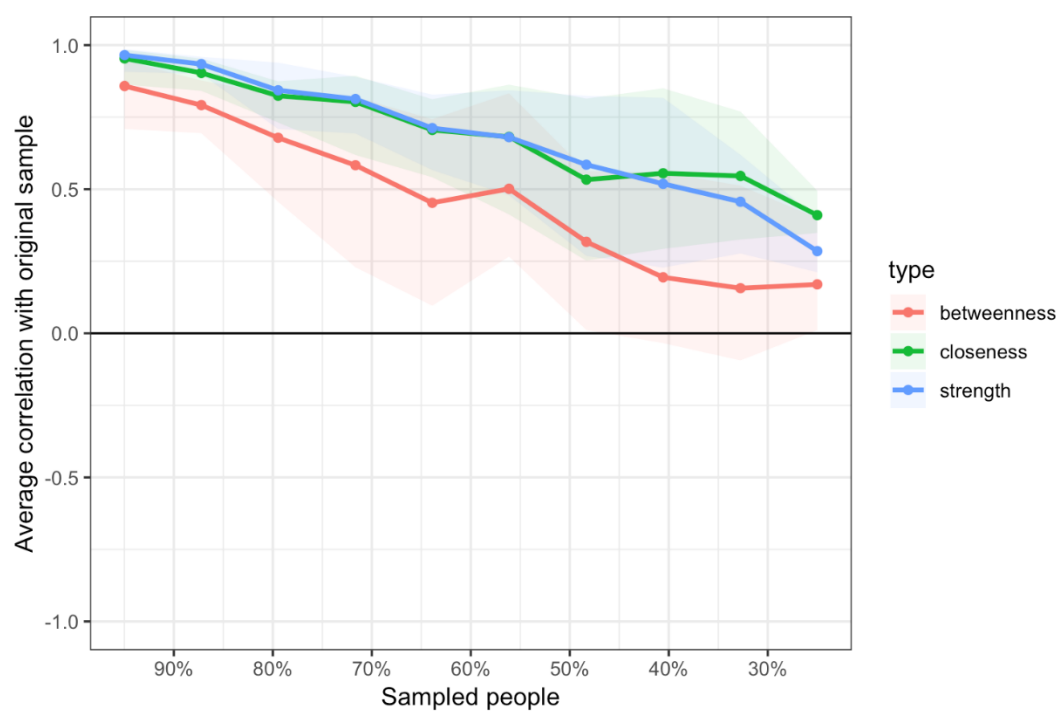


Figure 2S: Centrality Stability

a) BD



b) NO BD



ii) Network Analysis of unipolar depression with or without a family history of bipolar disorder (FH BD)

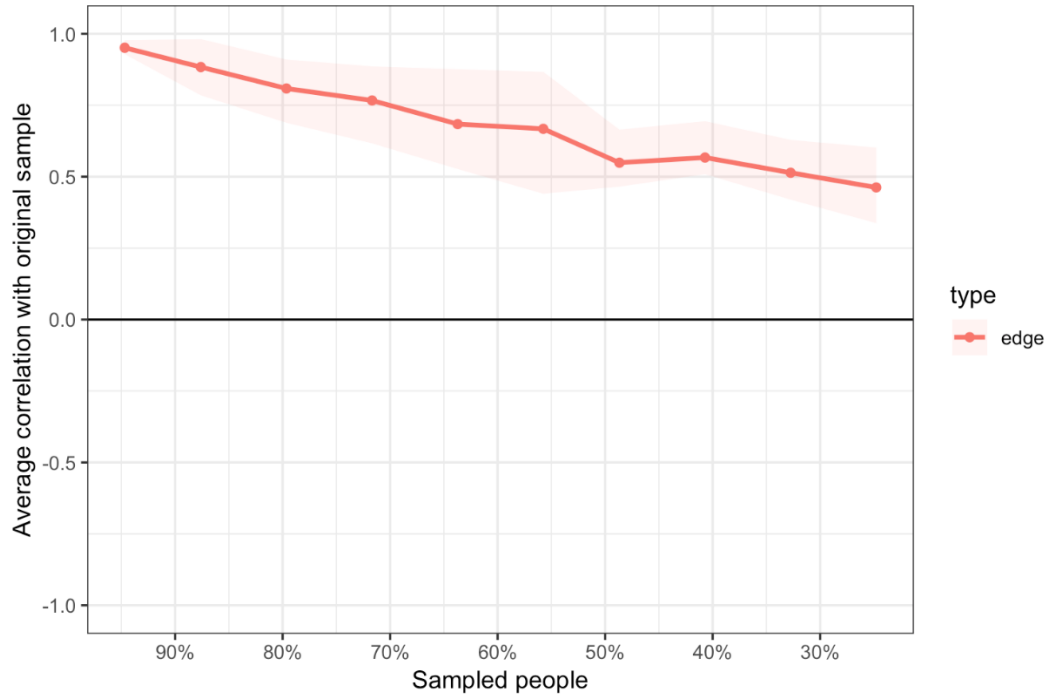
Table 2S: Centrality measures per variable (bold text indicates the ‘top 4’ i.e. the variables that differ most between the two networks)

Variable	No FH BD			FH BD		
	Betweenness	Closeness	Strength	Betweenness	Closeness	Strength
Nervous/Tense (D1)	-0.906	0.176	0.213	-0.714	-0.144	0.035
Unhappy/Depressed (D2)	0.398	-0.325	0.108	-0.276	0.291	0.110
Feel Stressed (D3)	-0.645	1.210	1.113	-0.714	-0.685	-0.490
Feel Overwhelmed (D4)	1.702	1.665	1.147	-0.058	-0.207	-0.320
Loss of Confidence (D5)	0.398	0.131	0.050	-1.152	-0.511	-0.870
Hopelessness (D6)	-0.384	-2.307	-2.404	1.037	0.886	0.978
Somatic Pain (D7)	-0.906	-0.115	0.561	-0.714	-1.093	-1.058
Hypersomnia (D8)	-0.906	0.361	0.233	0.380	1.166	0.753
Fatigue (D9)	0.137	0.856	0.995	0.161	-0.354	-0.188
Impaired Sleep Quality (D10)	-0.906	-2.048	-2.071	-0.933	-0.871	-0.583
Impaired Concentration (D11)	-0.124	0.820	0.628	1.037	0.921	1.426
Anergia (D12)	1.180	-0.130	-0.519	3.007	2.611	2.304
Feeling Elated (HM1)	-0.906	0.003	0.675	-0.933	-1.679	-1.123
Increased Self-Esteem (HM2)	-0.124	-0.316	-0.731	-1.152	-0.976	-0.492
Impaired Sleep (Reduced) HM3	1.180	0.503	0.410	0.161	0.147	0.871
Increased Psychomotor Speed (HM4)	-0.906	-0.482	-0.833	0.161	0.414	0.826
Increased Activity (HM5)	-0.384	-0.485	-0.623	-0.276	-0.810	-1.463
Feeling Threatened by Others (P4)	2.484	1.133	1.028	0.380	0.772	0.412
Thinking People are Against You (P5)	-0.384	-0.651	0.019	0.599	0.123	-1.127

Figure 3S: Edge Stability

In the following diagrams the solid lines represent the strength of correlation & the shaded areas indicate the 95% confidence intervals.

a) FH BD



b) No FH BD

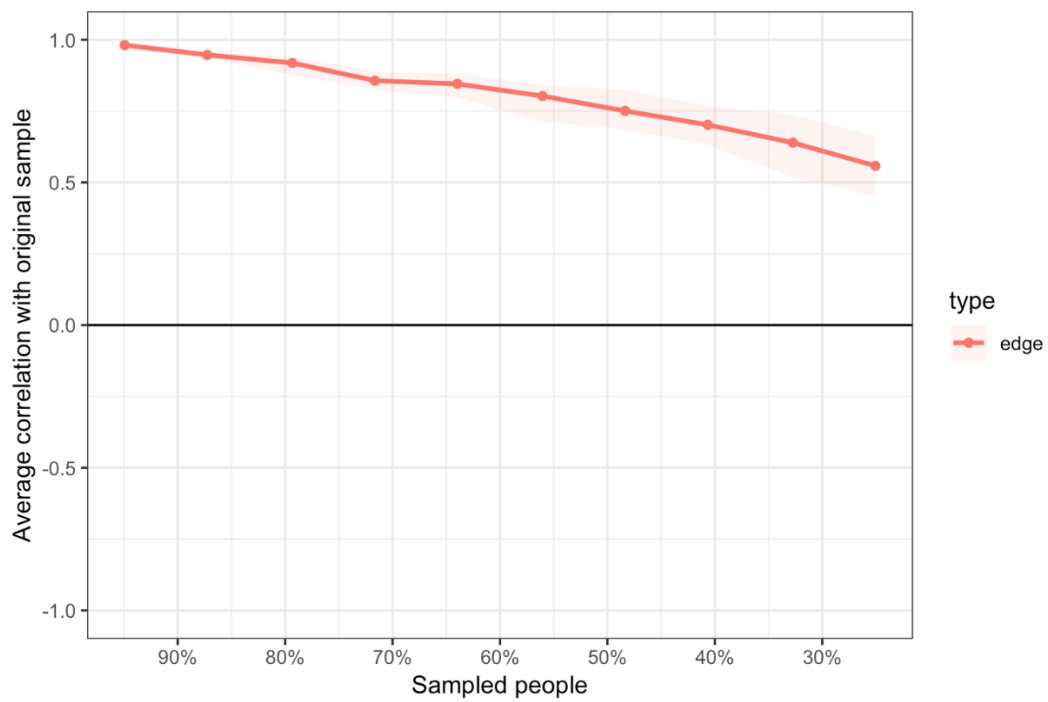
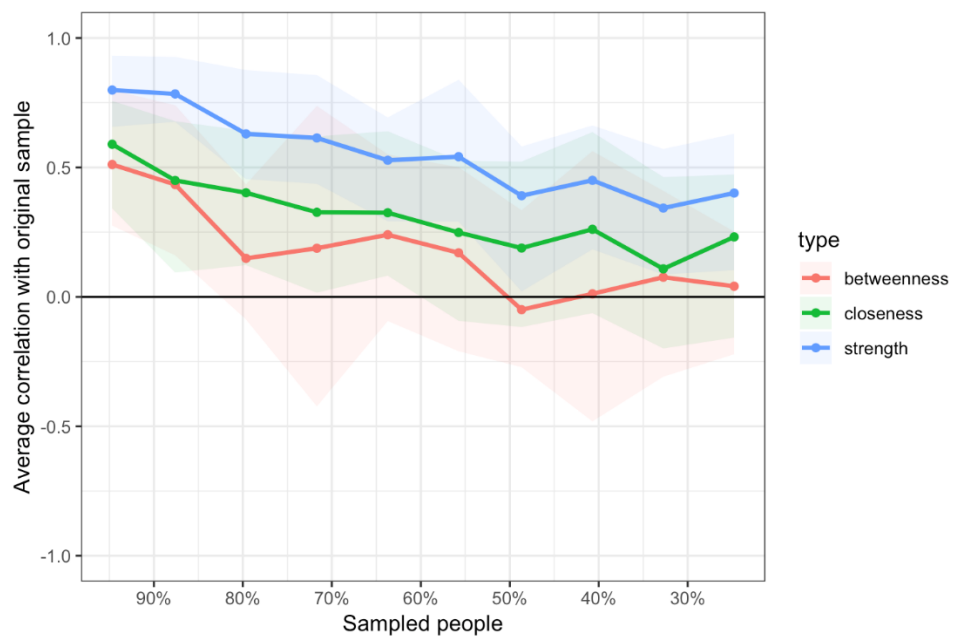


Figure 4S: Centrality Stability

a) FH BD



b) No FH BD

