

5. Hormiinae BOLD TaxonID Tree

Title : Tree Result - Search: Sample IDs (488 records returned) (488 records selected)

Date : 17-Nov-2020

Data Type : Nucleotide

Distance Model : Kimura 2 Parameter

Marker : COI-5P

Colourization : [blue]=Stop Codons [red]=Contamination or misidentification

Label : Sample ID

Label : Taxon

Label : Extra Info

Label : Sequence Length

Label : Barcode Cluster (BIN)

Sequence Count : 455

Species count : 53

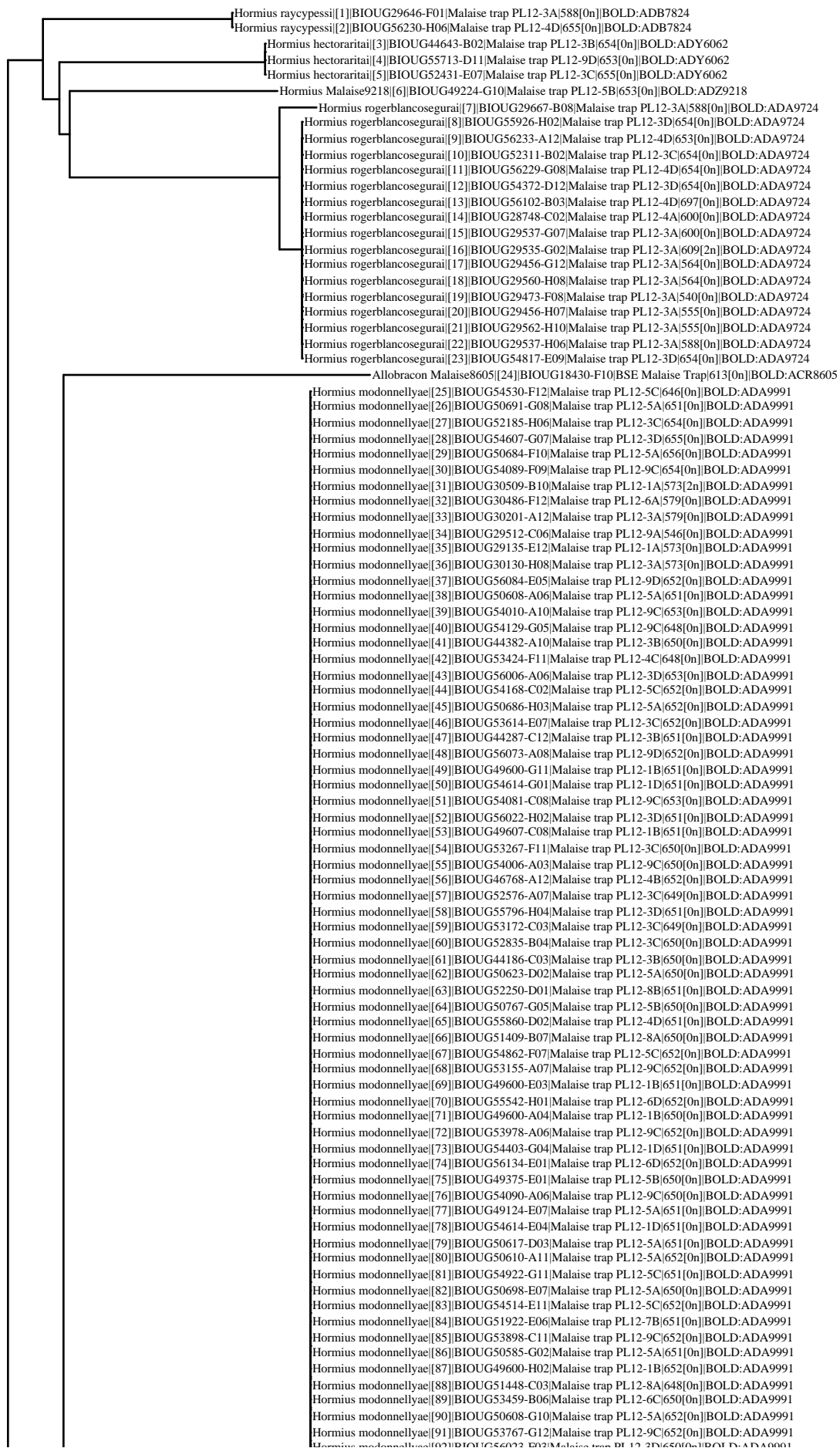
Genus count : 2

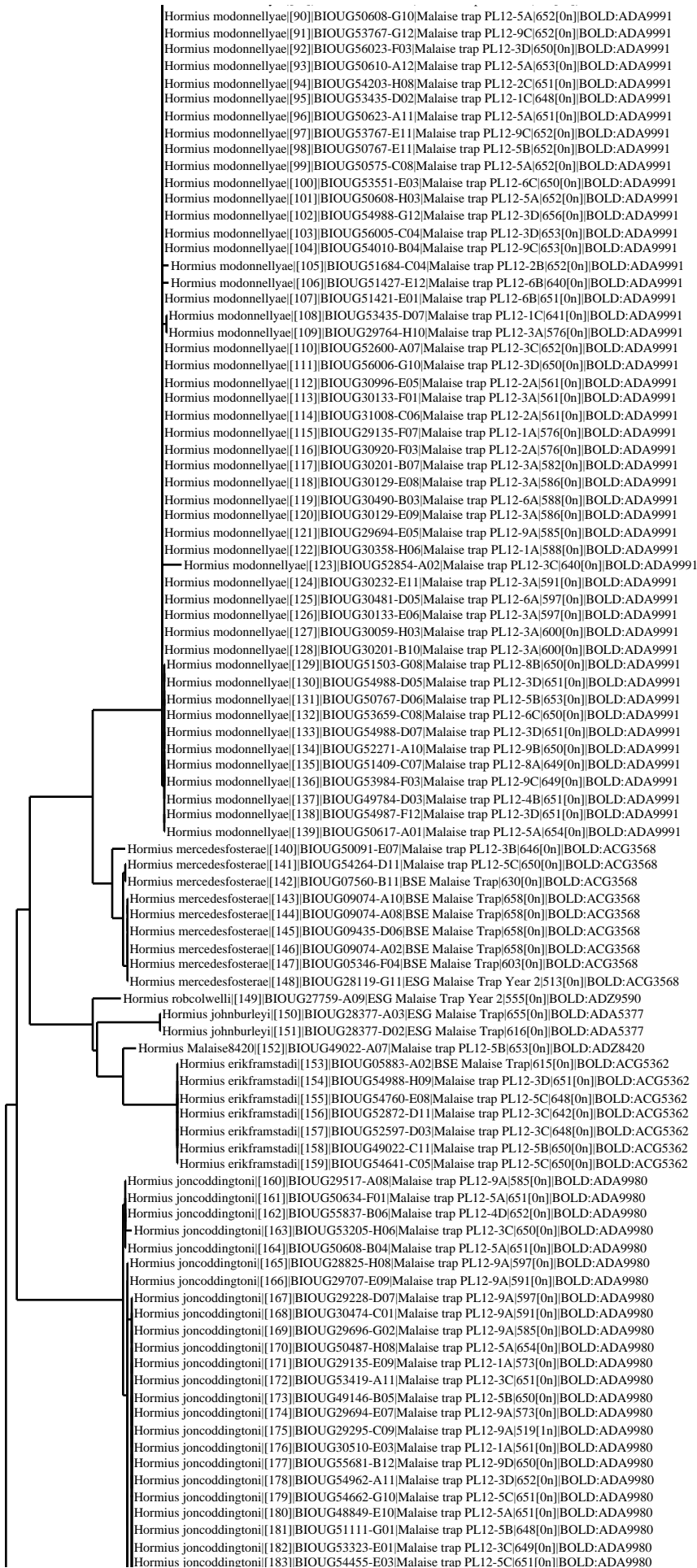
Family count : 1

Unidentified : 12

BIN Count : 53

2 %





Hormius joncoddingtoni[181]BIOUG51111-G01|Malaise trap PL12-5B|648|On|BOLD:ADA9980
Hormius joncoddingtoni[182]BIOUG53323-E01|Malaise trap PL12-3C|649|On|BOLD:ADA9980
Hormius joncoddingtoni[183]BIOUG54455-E03|Malaise trap PL12-5C|651|On|BOLD:ADA9980
Hormius joncoddingtoni[184]BIOUG53025-B11|Malaise trap PL12-3C|650|On|BOLD:ADA9980
Hormius joncoddingtoni[185]BIOUG54711-A11|Malaise trap PL12-3D|651|On|BOLD:ADA9980
Hormius joncoddingtoni[186]BIOUG50700-E01|Malaise trap PL12-5A|652|On|BOLD:ADA9980
Hormius joncoddingtoni[187]BIOUG49584-A05|Malaise trap PL12-5B|650|On|BOLD:ADA9980
Hormius joncoddingtoni[188]BIOUG29973-F01|Malaise trap PL12-3A|585|On|BOLD:ADA9980
Hormius joncoddingtoni[189]BIOUG29599-D02|Malaise trap PL12-9A|582|On|BOLD:ADA9980
Hormius joncoddingtoni[190]BIOUG53280-E09|Malaise trap PL12-3C|647|On|BOLD:ADA9980
Hormius joncoddingtoni[191]BIOUG54337-H09|Malaise trap PL12-5C|641|On|BOLD:ADA9980
Hormius joncoddingtoni[192]BIOUG53271-H05|Malaise trap PL12-3C|640|On|BOLD:ADA9980
Hormius joncoddingtoni[193]BIOUG53391-C09|Malaise trap PL12-3C|640|On|BOLD:ADA9980
Hormius joncoddingtoni[194]BIOUG52833-B10|Malaise trap PL12-3C|652|On|BOLD:ADA9980
Hormius joncoddingtoni[195]BIOUG49784-B09|Malaise trap PL12-4B|652|On|BOLD:ADA9980
Hormius joncoddingtoni[196]BIOUG54081-D02|Malaise trap PL12-9C|651|On|BOLD:ADA9980
Hormius joncoddingtoni[197]BIOUG53873-H09|Malaise trap PL12-9C|649|On|BOLD:ADA9980
Hormius joncoddingtoni[198]BIOUG54454-F01|Malaise trap PL12-5C|651|On|BOLD:ADA9980
Hormius joncoddingtoni[199]BIOUG56351-E08|Malaise trap PL12-9D|648|On|BOLD:ADA9980
Hormius joncoddingtoni[200]BIOUG52999-H11|Malaise trap PL12-3C|650|On|BOLD:ADA9980
Hormius joncoddingtoni[201]BIOUG56057-H09|Malaise trap PL12-3D|652|On|BOLD:ADA9980
Hormius joncoddingtoni[202]BIOUG53444-F10|Malaise trap PL12-3C|651|On|BOLD:ADA9980
Hormius joncoddingtoni[203]BIOUG29696-F02|Malaise trap PL12-9A|564|On|BOLD:ADA9980
Hormius joncoddingtoni[204]BIOUG53269-F10|Malaise trap PL12-3C|647|On|BOLD:ADA9980
Hormius joncoddingtoni[205]BIOUG55077-H03|Malaise trap PL12-1D|651|On|BOLD:ADA9980
Hormius joncoddingtoni[206]BIOUG50629-G09|Malaise trap PL12-5A|652|On|BOLD:ADA9980
Hormius joncoddingtoni[207]BIOUG50610-B07|Malaise trap PL12-5A|650|On|BOLD:ADA9980
Hormius joncoddingtoni[208]BIOUG51698-C07|Malaise trap PL12-2B|652|On|BOLD:ADA9980
Hormius joncoddingtoni[209]BIOUG53391-B07|Malaise trap PL12-3C|649|On|BOLD:ADA9980
Hormius joncoddingtoni[210]BIOUG54076-F05|Malaise trap PL12-9C|649|On|BOLD:ADA9980
Hormius joncoddingtoni[211]BIOUG29667-G07|Malaise trap PL12-3A|597|On|BOLD:ADA9980
Hormius joncoddingtoni[212]BIOUG29707-E10|Malaise trap PL12-9A|585|On|BOLD:ADA9980
Hormius joncoddingtoni[213]BIOUG29689-B07|Malaise trap PL12-3A|585|On|BOLD:ADA9980
Hormius joncoddingtoni[214]BIOUG29330-G03|Malaise trap PL12-4A|585|On|BOLD:ADA9980
Hormius joncoddingtoni[215]BIOUG29696-G05|Malaise trap PL12-9A|585|On|BOLD:ADA9980
Hormius joncoddingtoni[216]BIOUG29696-E09|Malaise trap PL12-9A|585|On|BOLD:ADA9980
Hormius joncoddingtoni[217]BIOUG29903-F04|Malaise trap PL12-3A|540|On|BOLD:ADA9980
Hormius joncoddingtoni[218]BIOUG29576-B06|Malaise trap PL12-9A|582|On|BOLD:ADA9980
Hormius joncoddingtoni[219]BIOUG29603-E07|Malaise trap PL12-9A|583|On|BOLD:ADA9980
Hormius joncoddingtoni[220]BIOUG29884-G12|Malaise trap PL12-3A|579|On|BOLD:ADA9980
Hormius joncoddingtoni[221]BIOUG29332-H06|Malaise trap PL12-4A|576|On|BOLD:ADA9980
Hormius joncoddingtoni[222]BIOUG49263-H08|Malaise trap PL12-5B|651|On|BOLD:ADA9980
Hormius joncoddingtoni[223]BIOUG50652-B10|Malaise trap PL12-5A|654|On|BOLD:ADA9980
Hormius joncoddingtoni[224]BIOUG52835-D06|Malaise trap PL12-3C|654|On|BOLD:ADA9980
Hormius joncoddingtoni[225]BIOUG54053-D09|Malaise trap PL12-9C|652|On|BOLD:ADA9980
Hormius joncoddingtoni[226]BIOUG50610-A05|Malaise trap PL12-5A|651|On|BOLD:ADA9980
Hormius joncoddingtoni[227]BIOUG52758-F02|Malaise trap PL12-3C|652|On|BOLD:ADA9980
Hormius joncoddingtoni[228]BIOUG52835-E04|Malaise trap PL12-3C|650|On|BOLD:ADA9980
Hormius joncoddingtoni[229]BIOUG52835-E05|Malaise trap PL12-3C|649|On|BOLD:ADA9980
Hormius joncoddingtoni[230]BIOUG53191-H10|Malaise trap PL12-3C|650|On|BOLD:ADA9980
Hormius joncoddingtoni[231]BIOUG49185-A09|Malaise trap PL12-5B|651|On|BOLD:ADA9980
Hormius joncoddingtoni[232]BIOUG48852-D02|Malaise trap PL12-5A|650|On|BOLD:ADA9980
Hormius joncoddingtoni[233]BIOUG53242-E10|Malaise trap PL12-3C|650|On|BOLD:ADA9980
Hormius joncoddingtoni[234]BIOUG50726-D09|Malaise trap PL12-5A|651|On|BOLD:ADA9980
Hormius joncoddingtoni[235]BIOUG50652-G06|Malaise trap PL12-5A|652|On|BOLD:ADA9980
Hormius joncoddingtoni[236]BIOUG53391-A01|Malaise trap PL12-3C|650|On|BOLD:ADA9980
Hormius joncoddingtoni[237]BIOUG50608-F11|Malaise trap PL12-5A|652|On|BOLD:ADA9980
Hormius joncoddingtoni[238]BIOUG50585-B09|Malaise trap PL12-5A|652|On|BOLD:ADA9980
Hormius joncoddingtoni[239]BIOUG54497-E11|Malaise trap PL12-3D|650|On|BOLD:ADA9980
Hormius joncoddingtoni[240]BIOUG53205-C03|Malaise trap PL12-3C|648|On|BOLD:ADA9980
Hormius joncoddingtoni[241]BIOUG50988-B03|Malaise trap PL12-5B|653|On|BOLD:ADA9980
Hormius joncoddingtoni[242]BIOUG54809-H03|Malaise trap PL12-3D|650|On|BOLD:ADA9980
Hormius joncoddingtoni[243]BIOUG50600-D12|Malaise trap PL12-5A|649|On|BOLD:ADA9980
Hormius joncoddingtoni[244]BIOUG29696-G03|Malaise trap PL12-9A|573|On|BOLD:ADA9980
Hormius joncoddingtoni[245]BIOUG29880-G09|Malaise trap PL12-3A|573|On|BOLD:ADA9980
Hormius joncoddingtoni[246]BIOUG54793-G06|Malaise trap PL12-3D|651|On|BOLD:ADA9980
Hormius joncoddingtoni[247]BIOUG50698-C06|Malaise trap PL12-5A|651|On|BOLD:ADA9980
Hormius joncoddingtoni[248]BIOUG53419-B01|Malaise trap PL12-3C|647|On|BOLD:ADA9980
Hormius joncoddingtoni[249]BIOUG46577-G08|Malaise trap PL12-4B|643|On|BOLD:ADA9980
Hormius joncoddingtoni[250]BIOUG47397-E05|Malaise trap PL12-5A|651|On|BOLD:ADA9980
Hormius joncoddingtoni[251]BIOUG54711-B07|Malaise trap PL12-3D|650|On|BOLD:ADA9980
Hormius joncoddingtoni[252]BIOUG53648-D12|Malaise trap PL12-9C|651|On|BOLD:ADA9980
Hormius joncoddingtoni[253]BIOUG50726-F05|Malaise trap PL12-5A|653|On|BOLD:ADA9980
Hormius joncoddingtoni[254]BIOUG50652-B06|Malaise trap PL12-5A|651|On|BOLD:ADA9980
Hormius joncoddingtoni[255]BIOUG53026-D04|Malaise trap PL12-3C|651|On|BOLD:ADA9980
Hormius joncoddingtoni[256]BIOUG53191-C12|Malaise trap PL12-3C|648|On|BOLD:ADA9980
Hormius joncoddingtoni[257]BIOUG53417-C04|Malaise trap PL12-3C|648|On|BOLD:ADA9980
Hormius joncoddingtoni[258]BIOUG50652-D11|Malaise trap PL12-5A|650|On|BOLD:ADA9980
Hormius joncoddingtoni[259]BIOUG54727-E07|Malaise trap PL12-3D|650|On|BOLD:ADA9980
Hormius joncoddingtoni[260]BIOUG50485-G05|Malaise trap PL12-5A|652|On|BOLD:ADA9980
Hormius joncoddingtoni[261]BIOUG46724-E09|Malaise trap PL12-4B|650|On|BOLD:ADA9980
Hormius joncoddingtoni[262]BIOUG54090-A08|Malaise trap PL12-9C|652|On|BOLD:ADA9980
Hormius joncoddingtoni[263]BIOUG53324-H11|Malaise trap PL12-3C|648|On|BOLD:ADA9980
Hormius joncoddingtoni[264]BIOUG49969-G09|Malaise trap PL12-3B|652|On|BOLD:ADA9980
Hormius joncoddingtoni[265]BIOUG54001-H08|Malaise trap PL12-9C|648|On|BOLD:ADA9980
Hormius joncoddingtoni[266]BIOUG56055-E03|Malaise trap PL12-3D|650|On|BOLD:ADA9980
Hormius joncoddingtoni[267]BIOUG56052-G06|Malaise trap PL12-3D|648|On|BOLD:ADA9980
Hormius joncoddingtoni[268]BIOUG55087-C04|Malaise trap PL12-1D|654|On|BOLD:ADA9980
Hormius Malaise2497[269]BIOUG08355-H11|BSE Malaise Trap|658|On|BOLD:ACK2497
Hormius Malaise8560[270]BIOUG30025-F07|Malaise trap PL12-3A|597|On|BOLD:AAP8560
Hormius Malaise8560[271]BIOUG30060-B01|Malaise trap PL12-3A|600|On|BOLD:AAP8560
Hormius Malaise8560[272]BIOUG29696-E07|Malaise trap PL12-9A|576|On|BOLD:AAP8560
Hormius Malaise8560[273]BIOUG46725-F12|Malaise trap PL12-4B|651|On|BOLD:AAP8560
Hormius Malaise8560[274]BIOUG50684-H02|Malaise trap PL12-5A|652|On|BOLD:AAP8560

