

7. Macrocentrinae BOLD TaxonID Tree

Title : Tree Result - Search: Sample IDs (559 records returned) (559 records selected)

Date : 17-Nov-2020

Data Type : Nucleotide

Distance Model : Kimura 2 Parameter

Marker : COI-5P

Colourization : [blue]=Stop Codons [red]=Contamination or misidentification

Label : Sample ID

Label : Taxon

Label : Extra Info

Label : Sequence Length

Label : Barcode Cluster (BIN)

Filter : exclude records with stop codons

Sequence Count : 518

Species count : 53

Genus count : 5

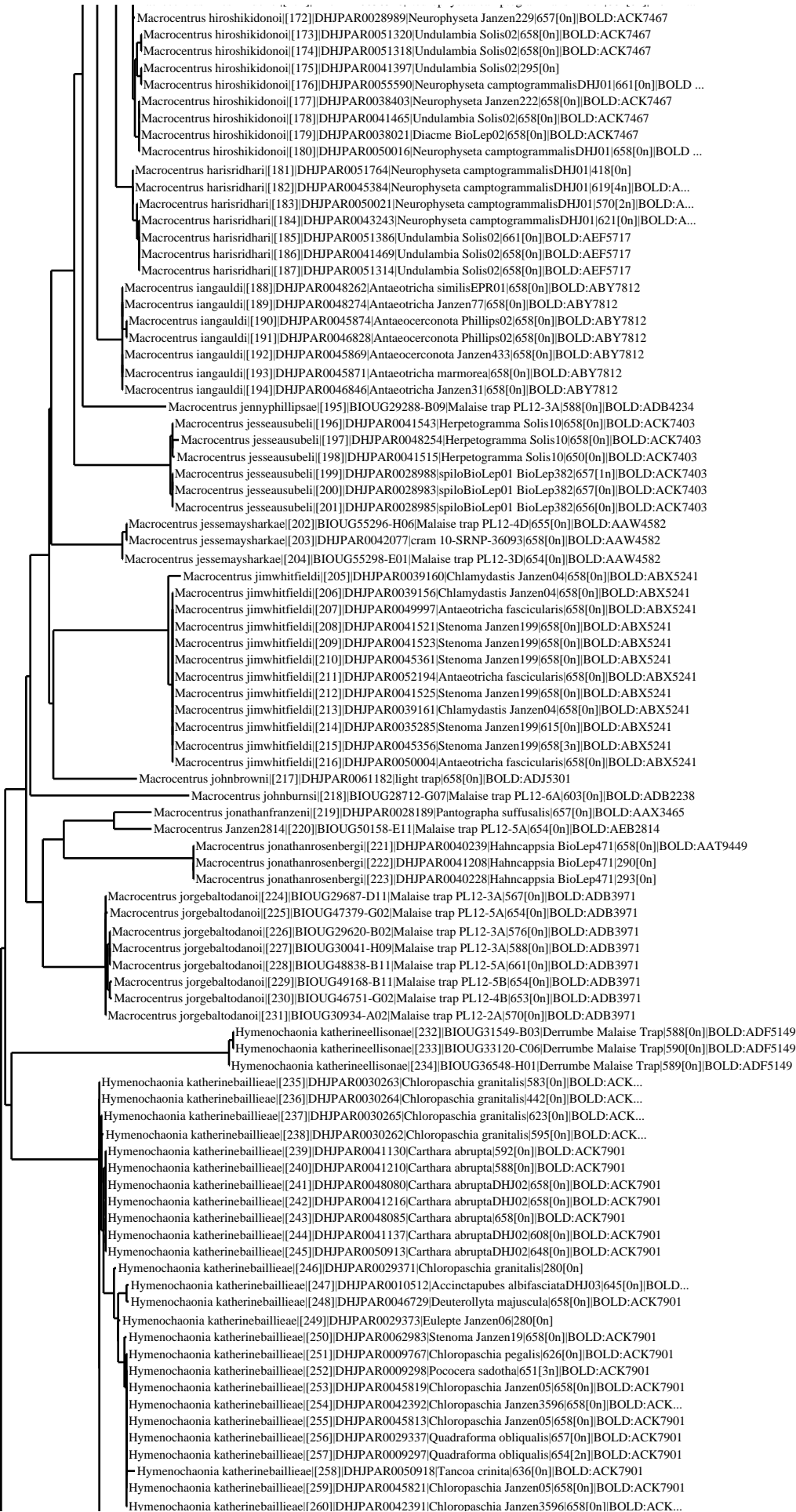
Family count : 1

Unidentified : 0

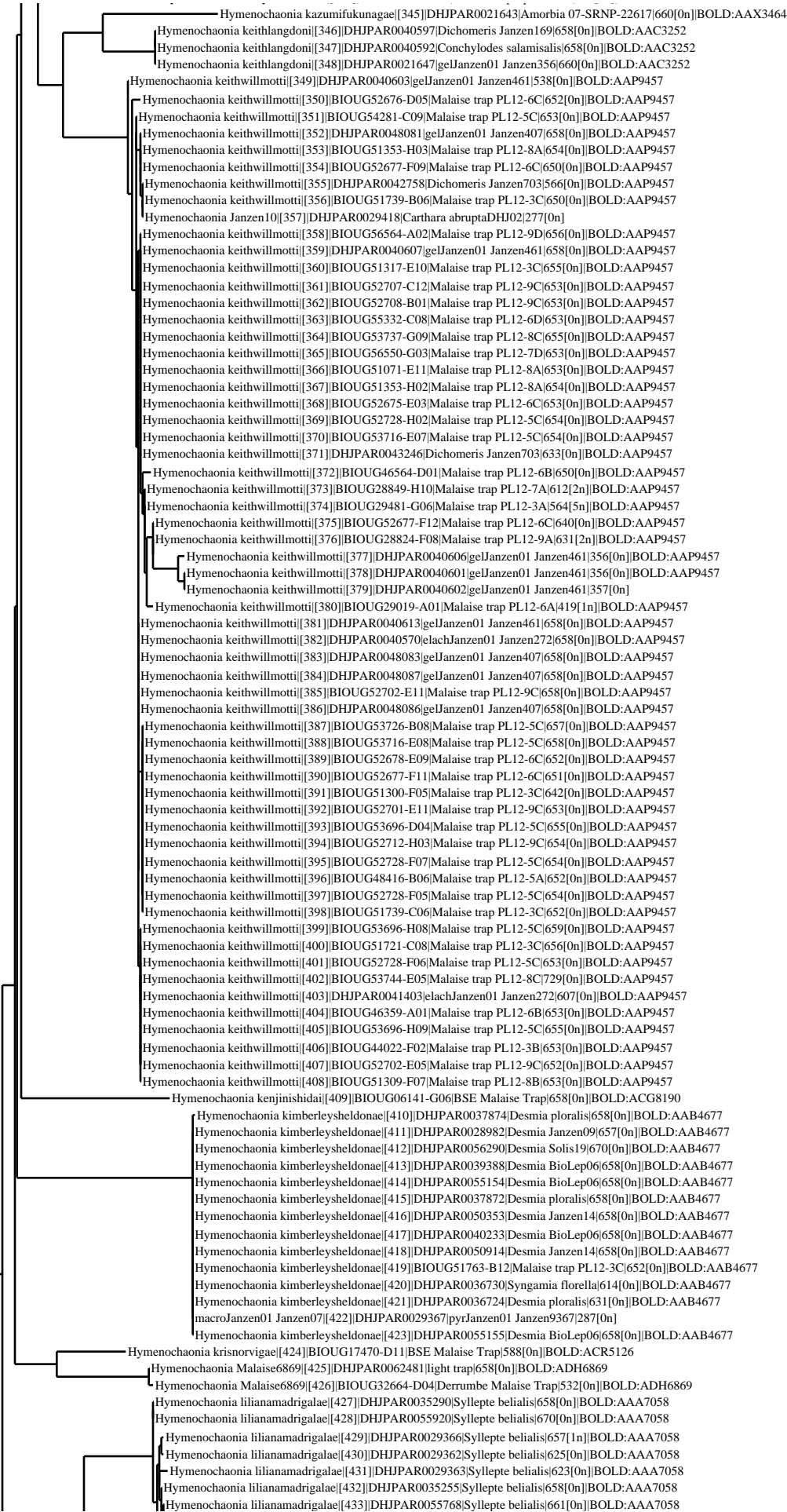
BIN Count : 36

Hymenochaonia katerepzeae[1]|DHJP0035533|Stenoma BioLep86|658[0n]|BOLD:AAA7061
Hymenochaonia katerepzeae[2]|DHJP0035531|Stenoma BioLep86|658[0n]|BOLD:AAA7061
Hymenochaonia katerepzeae[3]|DHJP0045062|elachBioLep01 BioLep754|629[0n]|BOLD:AAA7061
Hymenochaonia kalevikulli[4]|DHJP0040580|Antaeotricha caprimulgaEPR01|414[0n]|BOLD:AAP9411
Hymenochaonia kalevikulli[5]|DHJP0040585|Antaeotricha caprimulgaEPR01|658[0n]|BOLD:AAP9411
Hymenochaonia kalevikulli[6]|DHJP0040591|Antaeotricha caprimulgaEPR01|658[0n]|BOLD:AAP9411
Hymenochaonia kalevikulli[7]|DHJP0040571|Antaeotricha caprimulgaEPR01|658[0n]|BOLD:AAP9411
Hymenochaonia kalevikulli[8]|DHJP0040584|Antaeotricha caprimulgaEPR01|658[0n]|BOLD:AAP9411
Hymenochaonia kalevikulli[9]|DHJP0040574|Antaeotricha caprimulgaEPR01|658[0n]|BOLD:AAP9411
Hymenochaonia kalevikulli[10]|DHJP0040579|Antaeotricha caprimulgaEPR01|658[0n]|BOLD:AAP9411
Hymenochaonia kalevikulli[11]|DHJP0040572|Antaeotricha caprimulgaEPR01|658[0n]|BOLD:AAP9411
Hymenochaonia kalevikulli[12]|DHJP0040578|Antaeotricha caprimulgaEPR01|658[0n]|BOLD:AAP9411
Hymenochaonia kalevikulli[13]|DHJP0040595|Antaeotricha caprimulgaEPR02|658[0n]|BOLD:AAP9411
Hymenochaonia kalevikulli[14]|DHJP0040567|Antaeotricha caprimulgaEPR01|658[0n]|BOLD:AAP9411
Hymenochaonia kalevikulli[15]|DHJP0040587|Antaeotricha caprimulgaEPR01|655[0n]|BOLD:AAP9411
Hymenochaonia kalevikulli[16]|DHJP0040484|Antaeotricha caprimulgaEPR01|658[0n]|BOLD:AAP9411
Macrocentrus gustavogutierrezii[17]|DHJP0028981|Asturodes fimbriauralisDHI02|657[0n]|BOLD:AC...
Macrocentrus gustavogutierrezii[18]|DHJP0038831|Asturodes fimbriauralisDHI02|658[0n]|BOLD:AC...
Macrocentrus gustavogutierrezii[19]|DHJP0029390|Asturodes fimbriauralisDHI02|657[0n]|BOLD:AC...
Macrocentrus gustavogutierrezii[20]|DHJP0029392|Asturodes fimbriauralisDHI02|657[0n]|BOLD:AC...
Macrocentrus gustavogutierrezii[21]|DHJP0029349|Asturodes fimbriauralisDHI02|657[0n]|BOLD:AC...
Macrocentrus gustavogutierrezii[22]|DHJP0029393|Asturodes fimbriauralisDHI02|657[0n]|BOLD:AC...
Macrocentrus gustavogutierrezii[23]|DHJP0029391|Asturodes fimbriauralisDHI02|657[0n]|BOLD:AC...
Macrocentrus gustavogutierrezii[24]|DHJP0029076|Antaeotricha spurca|657[0n]|BOLD:ACK7466
Macrocentrus gustavogutierrezii[25]|DHJP0055165|Asturodes fimbriauralisDHI02|658[0n]|BOLD:AC...
Macrocentrus gustavogutierrezii[26]|DHJP0029384|Asturodes fimbriauralisDHI02|632[0n]|BOLD:AC...
Macrocentrus gustavogutierrezii[27]|DHJP0036731|Asturodes fimbriauralisDHI02|649[0n]|BOLD:AC...
Macrocentrus gustavogutierrezii[28]|DHJP0029382|Asturodes fimbriauralisDHI02|279[0n]|BOLD:AC...
Macrocentrus gustavogutierrezii[29]|DHJP0050803|Asturodes fimbriauralisDHI02|661[0n]|BOLD:AC...
Macrocentrus gustavogutierrezii[30]|DHJP0037707|Asturodes fimbriauralisDHI02|658[0n]|BOLD:AC...
Macrocentrus gustavogutierrezii[31]|DHJP0029386|Asturodes fimbriauralisDHI02|657[0n]|BOLD:AC...
Macrocentrus gustavogutierrezii[32]|DHJP0029385|Asturodes fimbriauralisDHI02|279[0n]|BOLD:AC...
Macrocentrus gustavogutierrezii[33]|DHJP0029389|Asturodes fimbriauralisDHI02|657[0n]|BOLD:AC...
Macrocentrus gustavogutierrezii[34]|DHJP0028987|Asturodes fimbriauralisDHI02|421[0n]|BOLD:AC...
Macrocentrus gustavogutierrezii[35]|DHJP0029383|Asturodes fimbriauralisDHI02|632[0n]|BOLD:AC...
Macrocentrus gustavogutierrezii[36]|DHJP0028997|Asturodes fimbriauralisDHI02|657[0n]|BOLD:AC...
Macrocentrus gustavogutierrezii[37]|DHJP0038832|Asturodes fimbriauralisDHI02|658[0n]|BOLD:AC...
Macrocentrus gustavogutierrezii[38]|DHJP0029360|Asturodes fimbriauralisDHI02|634[0n]|BOLD:AC...
Macrocentrus gustavogutierrezii[39]|DHJP0029340|Asturodes fimbriauralisDHI02|632[0n]|BOLD:AC...
Macrocentrus gustavogutierrezii[40]|DHJP0029339|Asturodes fimbriauralisDHI02|632[0n]|BOLD:AC...
Macrocentrus gustavogutierrezii[41]|DHJP0029338|Asturodes fimbriauralisDHI02|630[0n]|BOLD:AC...
Macrocentrus gustavogutierrezii[42]|DHJP0029388|Asturodes fimbriauralisDHI02|657[0n]|BOLD:AC...
Macrocentrus gustavogutierrezii[43]|DHJP0036261|Asturodes fimbriauralisDHI02|661[0n]|BOLD:AC...
Macrocentrus gustavogutierrezii[44]|DHJP0028998|Asturodes fimbriauralisDHI02|657[0n]|BOLD:AC...
Macrocentrus gustavogutierrezii[45]|DHJP0061074|Asturodes fimbriauralisDHI02|658[1n]|BOLD:AC...
Macrocentrus gustavogutierrezii[46]|DHJP0029380|Asturodes fimbriauralisDHI02|646[1n]|BOLD:AC...
Macrocentrus gustavogutierrezii[47]|DHJP0029379|Asturodes fimbriauralisDHI02|646[0n]|BOLD:AC...
Macrocentrus gustavogutierrezii[48]|DHJP0050856|Asturodes fimbriauralisDHI02|203[0n]|BOLD:AC...
Macrocentrus gustavogutierrezii[49]|DHJP0029341|Asturodes fimbriauralisDHI02|657[0n]|BOLD:AC...
Macrocentrus gustavogutierrezii[50]|DHJP0053557|Asturodes fimbriauralisDHI02|662[0n]|BOLD:AC...
Macrocentrus gustavogutierrezii[51]|DHJP0028986|Asturodes fimbriauralisDHI02|642[0n]|BOLD:AC...
Macrocentrus Sharkey6319[52]|DHJP0056319|Pilocrocis ramentalis|661[0n]|BOLD:ACK7466
Macrocentrus Sharkey6006[53]|DHJP0056006|Pilocrocis ramentalis|670[0n]|BOLD:ACK7466
Macrocentrus lucianoapellii[54]|DHJP0054348|Apogeshna stenialisDHI03|658[0n]|BOLD:ACK7466
Macrocentrus Sharkey5380[55]|DHJP0045380|Desmia ploralisDHI10|658[4n]|BOLD:ACK7466
Macrocentrus geoffbarnardi[56]|DHJP0040081|Syllepis marialis|658[0n]|BOLD:ACK7466
Macrocentrus geoffbarnardi[57]|DHJP0048712|Syllepis marialis|658[0n]|BOLD:ACK7466
Macrocentrus geoffbarnardi[58]|DHJP0038891|Syllepis marialis|658[0n]|BOLD:ACK7466
Macrocentrus geoffbarnardi[59]|DHJP0038828|Syllepis marialis|658[0n]|BOLD:ACK7466
Macrocentrus geoffbarnardi[60]|DHJP0028994|Syllepis hortalis|657[0n]|BOLD:ACK7466
Macrocentrus geoffbarnardi[61]|DHJP0028992|Syllepis hortalis|657[0n]|BOLD:ACK7466
Macrocentrus geoffbarnardi[62]|DHJP0050916|Syllepis marialis|658[0n]|BOLD:ACK7466
Macrocentrus geoffbarnardi[63]|DHJP0049246|Syllepis marialis|658[0n]|BOLD:ACK7466
Macrocentrus geoffbarnardi[64]|DHJP0028995|Syllepis hortalis|657[0n]|BOLD:ACK7466
Macrocentrus geoffbarnardi[65]|DHJP0035268|Syllepis marialis|658[0n]|BOLD:ACK7466
Macrocentrus geoffbarnardi[66]|DHJP0039162|Syllepis marialis|658[0n]|BOLD:ACK7466
Macrocentrus Sharkey3940[67]|DHJP0063940|Lamprosema Dapkey23|630[0n]|BOLD:ACK7466
Macrocentrus gretchendailyae[68]|DHJP0054411|Pileosoma thialis|658[0n]|BOLD:ACK7466
Macrocentrus gretchendailyae[69]|DHJP0035152|Pileosoma thialis|658[0n]|BOLD:ACK7466
Macrocentrus gretchendailyae[70]|DHJP0035151|Pileosoma thialis|658[0n]|BOLD:ACK7466
Macrocentrus gretchendailyae[71]|DHJP0035305|Pileosoma thialis|658[0n]|BOLD:ACK7466
Macrocentrus gretchendailyae[72]|DHJP0040082|Pileosoma thialis|658[0n]|BOLD:ACK7466
Macrocentrus gretchendailyae[73]|DHJP0038018|Pileosoma thialis|658[0n]|BOLD:ACK7466
Macrocentrus gretchendailyae[74]|DHJP0063035|Stenoma Janzen44|658[0n]|BOLD:ACK7466
Macrocentrus gretchendailyae[75]|DHJP0035264|Pileosoma thialis|636[0n]|BOLD:ACK7466
Macrocentrus gretchendailyae[76]|DHJP0035262|Pileosoma thialis|630[0n]|BOLD:ACK7466
Macrocentrus gretchendailyae[77]|DHJP0017227|Pileosoma thialis|660[0n]|BOLD:ACK7466
Macrocentrus gretchendailyae[78]|DHJP0063008|Stenoma Janzen44|658[0n]|BOLD:ACK7466
Macrocentrus gretchendailyae[79]|DHJP0035306|Pileosoma thialis|658[0n]|BOLD:ACK7466
Macrocentrus gretchendailyae[80]|DHJP0063009|Stenoma Janzen44|658[0n]|BOLD:ACK7466
Macrocentrus gretchendailyae[81]|DHJP0035269|Pileosoma thialis|658[0n]|BOLD:ACK7466
Macrocentrus grettelvegae[82]|DHJP0045377|Desmia ploralisDHI10|658[1n]|BOLD:ACK7466
Macrocentrus grettelvegae[83]|DHJP0045379|Desmia ploralis|658[1n]|BOLD:ACK7466
Macrocentrus grettelvegae[84]|DHJP0040350|Desmia benealisDHI03|658[1n]|BOLD:ACK7466
Macrocentrus Sharkey08[85]|DHJP00508830|Phaedropsis leialisDHI03|658[0n]|BOLD:ACK7466
Macrocentrus Sharkey08[86]|DHJP0063986|Phaedropsis leialis|658[0n]|BOLD:ACK7466
Macrocentrus Sharkey08[87]|DHJP0063967|Phaedropsis leialis|630[0n]|BOLD:ACK7466

Macrocentrus Sharkey08[85]|DHJP0058830|Phaedropsis leialisDHJ03|658[0n]|BOLD:ACK7466
Macrocentrus Sharkey08[86]|DHJP0063986|Phaedropsis leialis|658[0n]|BOLD:ACK7466
Macrocentrus Sharkey08[87]|DHJP0063967|Phaedropsis leialis|630[0n]|BOLD:ACK7466
Macrocentrus gregburtoni[88]|DHJP00039541|Herpetogramma phaeopteralis|658[0n]|BOLD:ACK7466
Macrocentrus fredsingeri[89]|DHJP00041500|Neurophyseta clymenalisDHJ03|658[0n]|BOLD:ACK7466
Macrocentrus fredsingeri[90]|DHJP00042878|Neurophyseta clymenalisDHJ03|658[0n]|BOLD:ACK7466
Macrocentrus fredsingeri[91]|DHJP00042865|Neurophyseta clymenalisDHJ03|658[0n]|BOLD:ACK7466
Macrocentrus fredsingeri[92]|DHJP00043228|Neurophyseta clymenalisDHJ03|658[0n]|BOLD:ACK7466
Macrocentrus fredsingeri[93]|DHJP00042874|Neurophyseta clymenalisDHJ03|658[0n]|BOLD:ACK7466
Macrocentrus fredsingeri[94]|DHJP00045385|Neurophyseta clymenalisDHJ03|658[0n]|BOLD:ACK7466
Macrocentrus fredsingeri[95]|DHJP00041474|Neurophyseta clymenalisDHJ03|658[0n]|BOLD:ACK7466
Macrocentrus fredsingeri[96]|DHJP00042876|Neurophyseta clymenalisDHJ03|658[0n]|BOLD:ACK7466
Macrocentrus fredsingeri[97]|DHJP00042867|Neurophyseta clymenalisDHJ03|658[0n]|BOLD:ACK7466
Macrocentrus fredsingeri[98]|DHJP00042869|Neurophyseta clymenalisDHJ03|658[0n]|BOLD:ACK7466
Macrocentrus fredsingeri[99]|DHJP00041508|Neurophyseta clymenalisDHJ03|632[0n]|BOLD:ACK7466
Macrocentrus fredsingeri[100]|DHJP00041528|Neurophyseta clymenalisDHJ03|658[0n]|BOLD:ACK7466
Macrocentrus fredsingeri[101]|DHJP00042875|Neurophyseta clymenalisDHJ03|633[0n]|BOLD:ACK7466
Macrocentrus fredsingeri[102]|DHJP00041484|Neurophyseta clymenalisDHJ03|658[0n]|BOLD:ACK7466
Macrocentrus fredsingeri[103]|DHJP00041458|Neurophyseta clymenalisDHJ03|658[0n]|BOLD:ACK7466
Macrocentrus fredsingeri[104]|DHJP00041505|Neurophyseta clymenalisDHJ03|658[0n]|BOLD:ACK7466
Macrocentrus fredsingeri[105]|DHJP00041477|Neurophyseta clymenalisDHJ03|658[0n]|BOLD:ACK7466
Macrocentrus fredsingeri[106]|DHJP00041486|Neurophyseta clymenalisDHJ03|658[0n]|BOLD:ACK7466
Macrocentrus fredsingeri[107]|DHJP00042866|Neurophyseta clymenalisDHJ03|658[0n]|BOLD:ACK7466
Macrocentrus fredsingeri[108]|DHJP00042868|Neurophyseta clymenalisDHJ03|658[0n]|BOLD:ACK7466
Macrocentrus fredsingeri[109]|DHJP00041501|Neurophyseta clymenalisDHJ03|658[0n]|BOLD:ACK7466
Macrocentrus fredsingeri[110]|DHJP00041479|Neurophyseta clymenalisDHJ03|658[0n]|BOLD:ACK7466
Macrocentrus fredsingeri[111]|DHJP00037967|Neurophyseta clymenalisDHJ03|658[0n]|BOLD:ACK7466
Macrocentrus fredsingeri[112]|DHJP00041476|Neurophyseta clymenalisDHJ03|658[0n]|BOLD:ACK7466
Macrocentrus fredsingeri[113]|DHJP00041522|Neurophyseta clymenalisDHJ03|658[0n]|BOLD:ACK7466
Macrocentrus fredsingeri[114]|DHJP00041481|Neurophyseta clymenalisDHJ03|658[0n]|BOLD:ACK7466
Macrocentrus fredsingeri[115]|DHJP00051407|Neurophyseta clymenalisDHJ03|661[0n]|BOLD:ACK7466
Macrocentrus fredsingeri[116]|DHJP00042877|Neurophyseta clymenalisDHJ03|658[0n]|BOLD:ACK7466
Macrocentrus fredsingeri[117]|DHJP00041480|Neurophyseta clymenalisDHJ03|658[0n]|BOLD:ACK7466
Macrocentrus fredsingeri[118]|DHJP00042871|Neurophyseta clymenalisDHJ03|658[0n]|BOLD:ACK7466
Macrocentrus fredsingeri[119]|DHJP00041483|Neurophyseta clymenalisDHJ03|658[0n]|BOLD:ACK7466
Macrocentrus fredsingeri[120]|DHJP00041489|Neurophyseta clymenalisDHJ03|658[0n]|BOLD:ACK7466
Macrocentrus Janzen3861[121]|DHJP00063861|spiloJanzen01 Janzen88|658[0n]|BOLD:ACK7466
Macrocentrus Janzen3861[122]|DHJP00063862|spiloJanzen01 Janzen88|538[0n]|BOLD:ACK7466
Macrocentrus hannahjamesae[123]|DHJP00045376|Syllepis marialis|658[1n]|BOLD:ABA9321
Macrocentrus hannahjamesae[124]|DHJP00045386|Syllepis marialis|658[0n]|BOLD:ABA9321
Macrocentrus hannahjamesae[125]|DHJP00036308|Syllepis marialis|658[0n]|BOLD:ABA9321
Macrocentrus hannahjamesae[126]|DHJP00036307|Syllepis marialis|658[0n]|BOLD:ABA9321
Macrocentrus hannahjamesae[127]|DHJP00028984|Syllepis marialis|657[2n]|BOLD:ABA9321
Macrocentrus hillaryrosnerae[128]|DHJP00043202|Undulambia Solis02|658[0n]|BOLD:ABA7284
Macrocentrus hiroshikidonoi[129]|DHJP00054926|Undulambia Solis02|618[0n]|BOLD:ACK7467
Macrocentrus hiroshikidonoi[130]|DHJP00052380|Neurophyseta camptogrammalisDHJ01|620[0n]|BOLD ...
Macrocentrus hiroshikidonoi[131]|DHJP00053148|Undulambia Solis02|624[0n]|BOLD:ACK7467
Macrocentrus hiroshikidonoi[132]|DHJP00038466|Diacme BioLep02|658[0n]|BOLD:ACK7467
Macrocentrus hiroshikidonoi[133]|DHJP00050011|Neurophyseta camptogrammalisDHJ01|658[0n]|BOLD ...
Macrocentrus hiroshikidonoi[134]|DHJP00041406|Diacme BioLep02|658[0n]|BOLD:ACK7467
Macrocentrus hiroshikidonoi[135]|DHJP00045381|Undulambia Solis02|658[1n]|BOLD:ACK7467
Macrocentrus hiroshikidonoi[136]|DHJP00045382|Undulambia Solis02|658[1n]|BOLD:ACK7467
Macrocentrus hiroshikidonoi[137]|DHJP00041399|Undulambia Solis02|658[0n]|BOLD:ACK7467
Macrocentrus hiroshikidonoi[138]|DHJP00041504|Undulambia Solis02|658[0n]|BOLD:ACK7467
Macrocentrus hiroshikidonoi[139]|DHJP00041498|Neurophyseta completalis|658[0n]|BOLD:ACK7467
Macrocentrus hiroshikidonoi[140]|DHJP00041462|Undulambia Solis02|658[0n]|BOLD:ACK7467
Macrocentrus hiroshikidonoi[141]|DHJP00028990|Neurophyseta Janzen229|657[0n]|BOLD:ACK7467
Macrocentrus hiroshikidonoi[142]|DHJP00053668|Undulambia Solis02|658[0n]|BOLD:ACK7467
Macrocentrus hiroshikidonoi[143]|DHJP00053667|Undulambia Solis02|658[0n]|BOLD:ACK7467
Macrocentrus hiroshikidonoi[144]|DHJP00051422|Undulambia Solis02|661[0n]|BOLD:ACK7467
Macrocentrus hiroshikidonoi[145]|DHJP00041495|Undulambia Solis02|658[0n]|BOLD:ACK7467
Macrocentrus hiroshikidonoi[146]|DHJP00050013|Neurophyseta camptogrammalisDHJ01|658[0n]|BOLD ...
Macrocentrus hiroshikidonoi[147]|DHJP00051418|Undulambia Solis02|661[0n]|BOLD:ACK7467
Macrocentrus hiroshikidonoi[148]|DHJP00043250|Undulambia Solis02|658[0n]|BOLD:ACK7467
Macrocentrus hiroshikidonoi[149]|DHJP00041459|Undulambia Solis02|658[0n]|BOLD:ACK7467
Macrocentrus hiroshikidonoi[150]|DHJP00052327|Undulambia Solis02|658[0n]|BOLD:ACK7467
Macrocentrus hiroshikidonoi[151]|DHJP00050018|Neurophyseta camptogrammalisDHJ01|658[0n]|BOLD ...
Macrocentrus hiroshikidonoi[152]|DHJP00052193|Undulambia Solis02|658[0n]|BOLD:ACK7467
Macrocentrus hiroshikidonoi[153]|DHJP00023710|Diacme BioLep02|657[0n]|BOLD:ACK7467
Macrocentrus hiroshikidonoi[154]|DHJP00051322|Neurophyseta camptogrammalisDHJ01|658[0n]|BOLD ...
Macrocentrus hiroshikidonoi[155]|DHJP00050014|Undulambia Solis02|658[0n]|BOLD:ACK7467
Macrocentrus hiroshikidonoi[156]|DHJP00041519|Undulambia Solis02|658[0n]|BOLD:ACK7467
Macrocentrus hiroshikidonoi[157]|DHJP00050017|Neurophyseta camptogrammalisDHJ01|658[0n]|BOLD ...
Macrocentrus hiroshikidonoi[158]|DHJP00053669|Undulambia Solis02|658[0n]|BOLD:ACK7467
Macrocentrus hiroshikidonoi[159]|DHJP00041499|Neurophyseta completalis|658[0n]|BOLD:ACK7467
Macrocentrus hiroshikidonoi[160]|DHJP00042870|Undulambia Solis02|658[0n]|BOLD:ACK7467
Macrocentrus hiroshikidonoi[161]|DHJP00048239|Undulambia Solis02|658[0n]|BOLD:ACK7467
Macrocentrus hiroshikidonoi[162]|DHJP00050020|Neurophyseta camptogrammalisDHJ01|658[0n]|BOLD ...
Macrocentrus hiroshikidonoi[163]|DHJP00041509|Neurophyseta completalis|658[0n]|BOLD:ACK7467
Macrocentrus hiroshikidonoi[164]|DHJP00043239|Undulambia Solis02|658[0n]|BOLD:ACK7467
Macrocentrus hiroshikidonoi[165]|DHJP00045503|Neurophyseta camptogrammalisDHJ01|658[0n]|BOLD ...
Macrocentrus hiroshikidonoi[166]|DHJP00050022|Neurophyseta camptogrammalisDHJ01|658[0n]|BOLD ...
Macrocentrus hiroshikidonoi[167]|DHJP00041490|Neurophyseta completalis|658[0n]|BOLD:ACK7467
Macrocentrus hiroshikidonoi[168]|DHJP00050012|Neurophyseta camptogrammalisDHJ01|658[0n]|BOLD ...
Macrocentrus hiroshikidonoi[169]|DHJP00041544|Undulambia Solis02|658[0n]|BOLD:ACK7467
Macrocentrus hiroshikidonoi[170]|DHJP00041512|Neurophyseta clymenalisDHJ03|658[0n]|BOLD:ACK7467
Macrocentrus hiroshikidonoi[171]|DHJP00056340|Neurophyseta camptogrammalisDHJ01|661[0n]|BOLD ...
Macrocentrus hiroshikidonoi[172]|DHJP00028989|Neurophyseta Janzen229|657[0n]|BOLD:ACK7467
Macrocentrus hiroshikidonoi[173]|DHJP00051320|Undulambia Solis02|658[0n]|BOLD:ACK7467



Hymenochaonia katherinebaillieae[258]DHJPAR00059181|Ancoa crinita[656]0n||BOLD:ACK7901
Hymenochaonia katherinebaillieae[259]DHJPAR0045821|Chloropaschia Janzen05[658]0n||BOLD:ACK7901
Hymenochaonia katherinebaillieae[260]DHJPAR0042391|Chloropaschia Janzen3596[658]0n||BOLD:ACK...
Hymenochaonia katherinebaillieae[261]DHJPAR0028996|Carthara abruptaDHJ02[620]2n||BOLD:ACK7901
Hymenochaonia katherinebaillieae[262]DHJPAR0041220|Carthara abrupta[619]0n||BOLD:ACK7901
Hymenochaonia katherinebaillieae[263]DHJPAR0041209|Carthara abrupta[636]0n||BOLD:ACK7901
Hymenochaonia katherinebaillieae[264]DHJPAR0029369|Carthara abrupta[657]0n||BOLD:ACK7901
Hymenochaonia katherinebaillieae[265]DHJPAR0041214|Chloropaschia mennusalis[658]0n||BOLD:ACK...
Hymenochaonia katherinebaillieae[266]DHJPAR0041221|Carthara abrupta[658]0n||BOLD:ACK7901
Hymenochaonia katherinebaillieae[267]DHJPAR0041211|Carthara abrupta[636]0n||BOLD:ACK7901
Hymenochaonia katherinebaillieae[268]DHJPAR0041217|Carthara abrupta[658]0n||BOLD:ACK7901
Hymenochaonia katherinebaillieae[269]DHJPAR0029368|Carthara abrupta[624]0n||BOLD:ACK7901
Hymenochaonia katherinebaillieae[270]DHJPAR0009657|Carthara abruptaDHJ02[655]14n
Hymenochaonia katherinebaillieae[271]DHJPAR0037792|Carthara abruptaDHJ02[661]0n||BOLD:ACK7901
Hymenochaonia katherinebaillieae[272]DHJPAR00411219|Carthara abruptaDHJ02[658]0n||BOLD:ACK7901
Hymenochaonia katherinebaillieae[273]DHJPAR0040235|Carthara abruptaDHJ02[658]0n||BOLD:ACK7901
Hymenochaonia katherinebaillieae[274]DHJPAR0040236|Carthara abruptaDHJ02[658]0n||BOLD:ACK7901
Hymenochaonia katherinebaillieae[275]DHJPAR0040231|Carthara abruptaDHJ02[658]0n||BOLD:ACK7901
Hymenochaonia katherinebaillieae[276]DHJPAR0048084|Carthara abrupta[658]0n||BOLD:ACK7901
Hymenochaonia katherinebaillieae[277]DHJPAR0040232|Carthara abruptaDHJ02[658]0n||BOLD:ACK7901
Hymenochaonia katherinebaillieae[278]DHJPAR0041134|Carthara abruptaDHJ02[605]0n||BOLD:ACK7901
Hymenochaonia katherinebaillieae[279]DHJPAR0041218|Carthara abruptaDHJ02[632]0n||BOLD:ACK7901
Hymenochaonia katherinebaillieae[280]DHJPAR0045055|Carthara abrupta[650]0n||BOLD:ACK7901
Hymenochaonia katherinebaillieae[281]DHJPAR0040609|Carthara abruptaDHJ02[626]0n||BOLD:ACK7901
Hymenochaonia katherinebaillieae[282]DHJPAR0029180|Carthara abruptaDHJ01[657]0n||BOLD:ACK7901
Hymenochaonia katherinebaillieae[283]DHJPAR0040237|Carthara abruptaDHJ02[658]0n||BOLD:ACK7901
Hymenochaonia katherinebaillieae[284]DHJPAR0046728|Carthara abruptaDHJ02[658]0n||BOLD:ACK7901
Hymenochaonia katherinebaillieae[285]DHJPAR0046725|Accinctapubes albifasciataDHJ01[658]0n||BOLD...
Hymenochaonia katherinebaillieae[286]DHJPAR0041136|Carthara abruptaDHJ02[590]0n||BOLD:ACK7901
Hymenochaonia katherinebaillieae[287]DHJPAR0041133|Carthara abruptaDHJ02[589]0n||BOLD:ACK7901
Hymenochaonia katherinebaillieae[288]DHJPAR0041212|Carthara abruptaDHJ02[658]0n||BOLD:ACK7901
Hymenochaonia katherinebaillieae[289]DHJPAR0045829|Chloropaschia granitalis[658]0n||BOLD:ACK...
Hymenochaonia katherinebaillieae[290]DHJPAR0054451|Carthara abrupta[658]0n||BOLD:ACK7901
Hymenochaonia katherinebaillieae[291]DHJPAR0048082|Carthara abruptaDHJ02[658]0n||BOLD:ACK7901
Hymenochaonia katherinebaillieae[292]DHJPAR0037871|Carthara abruptaDHJ02[658]0n||BOLD:ACK7901
Hymenochaonia katherinebaillieae[293]DHJPAR0037866|Carthara abruptaDHJ02[658]0n||BOLD:ACK7901
Hymenochaonia katherinebaillieae[294]DHJPAR0037865|Carthara abruptaDHJ02[658]0n||BOLD:ACK7901
Hymenochaonia katherinebaillieae[295]DHJPAR0054448|Carthara abrupta[658]0n||BOLD:ACK7901
Hymenochaonia katherinebaillieae[296]DHJPAR0054449|Carthara abrupta[658]0n||BOLD:ACK7901
Hymenochaonia katherinebaillieae[297]DHJPAR0054450|Carthara abrupta[658]0n||BOLD:ACK7901
Hymenochaonia katherinebaillieae[298]DHJPAR0040238|Carthara abruptaDHJ02[658]0n||BOLD:ACK7901
Hymenochaonia katherinebaillieae[299]DHJPAR0037868|Carthara abruptaDHJ02[658]0n||BOLD:ACK7901
Hymenochaonia katherinebaillieae[300]DHJPAR0037869|Carthara abruptaDHJ02[658]0n||BOLD:ACK7901
Hymenochaonia katherinebaillieae[301]DHJPAR0040229|Carthara abruptaDHJ02[658]0n||BOLD:ACK7901
Hymenochaonia katherinebaillieae[302]DHJPAR0041213|Carthara abruptaDHJ02[658]0n||BOLD:ACK7901
Hymenochaonia katherinebaillieae[303]DHJPAR0054452|Carthara abrupta[658]0n||BOLD:ACK7901
Hymenochaonia katherinebaillieae[304]DHJPAR0040230|Carthara abruptaDHJ02[658]0n||BOLD:ACK7901
Hymenochaonia katherinebaillieae[305]DHJPAR0048088|Carthara abruptaDHJ02[658]0n||BOLD:ACK7901
Hymenochaonia katherinebaillieae[306]DHJPAR0037867|Carthara abruptaDHJ02[658]0n||BOLD:ACK7901
Hymenochaonia katherinebaillieae[307]DHJPAR0037870|Carthara abruptaDHJ02[658]0n||BOLD:ACK7901
Hymenochaonia katherinebaillieae[308]DHJPAR0055123|Carthara abruptaDHJ02[658]0n||BOLD:ACK7901
Hymenochaonia katherinebaillieae[309]DHJPAR0028980|Carthara abruptaDHJ02[657]0n||BOLD:ACK7901
Hymenochaonia katherinebaillieae[310]DHJPAR0009658|Carthara abruptaDHJ02[603]2n||BOLD:ACK7901
Hymenochaonia katherinebaillieae[311]DHJPAR0045378|Carthara abruptaDHJ02[658]1n||BOLD:ACK7901
Hymenochaonia katherinebaillieae[312]DHJPAR0045072|Chloropaschia granitalis[654]0n||BOLD:ACK...
Hymenochaonia katherinebaillieae[313]DHJPAR0041131|Carthara abruptaDHJ02[605]1n||BOLD:ACK7901
Hymenochaonia katherinebaillieae[314]DHJPAR0041135|Carthara abruptaDHJ02[608]0n||BOLD:ACK7901
Hymenochaonia katherinebaillieae[315]DHJPAR0029376|Chloropaschia granitalis[280]0n
Hymenochaonia katherinebaillieae[316]DHJPAR0029372|Chloropaschia granitalis[280]0n
Hymenochaonia katherinebaillieae[317]DHJPAR0041132|Carthara abruptaDHJ02[293]0n
Hymenochaonia katherinebaillieae[318]DHJPAR0046727|Carthara abrupta[658]0n||BOLD:ACK7901
Hymenochaonia katherinebaillieae[319]DHJPAR0046726|Carthara abrupta[637]0n||BOLD:ACK7901
Hymenochaonia katherinebaillieae[320]DHJPAR0040240|Carthara abruptaDHJ02[658]0n||BOLD:ACK7901
Hymenochaonia Whitfield03[321]DHJPAR0048703|Eulepte Solis15[658]0n||BOLD:ACB2136
Hymenochaonia Whitfield03[322]DHJPAR0055781|Eulepte Solis15[661]0n||BOLD:ACB2136
Hymenochaonia Whitfield03[323]DHJPAR0056257|Eulepte Janzen03[670]0n||BOLD:ACB2136
Hymenochaonia Whitfield03[324]DHJPAR0062967|Eulepte Solis15[658]2n||BOLD:ACB2136
Hymenochaonia Whitfield03[325]DHJPAR0062968|Eulepte Solis15[658]0n||BOLD:ACB2136
Hymenochaonia Whitfield03[326]DHJPAR0062969|Eulepte Solis15[658]0n||BOLD:ACB2136
Hymenochaonia Whitfield03[327]DHJPAR0065298|Eulepte Janzen07[631]0n
Hymenochaonia Whitfield03[328]DHJPAR0054459|Eulepte Janzen07[658]0n||BOLD:ACB2136
Hymenochaonia Whitfield03[329]DHJPAR0065325|Eulepte Janzen07[636]0n||BOLD:ACB2136
Hymenochaonia Whitfield03[330]DHJPAR0062966|Eulepte Solis15[658]0n||BOLD:ACB2136
Hymenochaonia Whitfield03[331]DHJPAR0062970|Eulepte Solis15[658]0n||BOLD:ACB2136
Hymenochaonia Whitfield03[332]DHJPAR0062965|Eulepte Solis15[658]0n||BOLD:ACB2136
Hymenochaonia katyvandusenaee[333]DHJPAR0039536|Pilocrocis purpurascens[623]0n||BOLD:AAL5547
Hymenochaonia katyvandusenaee[334]DHJPAR0052093|Pilocrocis purpurascens[658]0n||BOLD:AAL5547
Hymenochaonia katyvandusenaee[335]DHJPAR0057264|Pilocrocis purpurascens[661]0n||BOLD:AAL5547
Hymenochaonia katyvandusenaee[336]DHJPAR0036780|Pilocrocis purpurascens[534]1n||BOLD:AAL5547
Hymenochaonia katyvandusenaee[337]DHJPAR0038863|Pilocrocis purpurascens[658]0n||BOLD:AAL5547
Hymenochaonia katyvandusenaee[338]DHJPAR0057303|Pilocrocis purpurascens[661]0n||BOLD:AAL5547
Hymenochaonia katyvandusenaee[339]DHJPAR0042732|Pilocrocis purpurascens[658]0n||BOLD:AAL5547
Hymenochaonia katyvandusenaee[340]DHJPAR0052092|Pilocrocis purpurascens[658]0n||BOLD:AAL5547
Hymenochaonia katyvandusenaee[341]DHJPAR0040227|Pilocrocis purpurascens[658]0n||BOLD:AAL5547
Hymenochaonia katyvandusenaee[342]DHJPAR0052091|Pilocrocis purpurascens[658]0n||BOLD:AAL5547
Hymenochaonia katyvandusenaee[343]DHJPAR0037835|Pilocrocis purpurascens[658]0n||BOLD:AAL5547
Hymenochaonia katyvandusenaee[344]DHJPAR0041215|Pilocrocis purpurascens[658]0n||BOLD:AAL5547
Hymenochaonia kazumifukunagae[345]DHJPAR0021643|Amorbia 07-SRNP-22617[660]0n||BOLD:AA3464
Hymenochaonia keithlangdoni[346]DHJPAR0040597|Dichomeris Janzen169[658]0n||BOLD:AAC3252



Hymenochaonia tianamadrigalae[431]DHJPARK0029363|Syllepte belialis[625]BOLD:AAA7058
 Hymenochaonia lilianamadrigalae[432]DHJPAR0035255|Syllepte belialis[658]BOLD:AAA7058
 Hymenochaonia lilianamadrigalae[433]DHJPAR0055768|Syllepte belialis[661]BOLD:AAA7058
 Hymenochaonia lilianamadrigalae[434]DHJPAR0029364|Syllepte belialis[630]BOLD:AAA7058
 Hymenochaonia lilianamadrigalae[435]DHJPAR0029361|Syllepte belialis[608]BOLD:AAA7058
 Hymenochaonia lizlangleyae[436]DHJPAR0009324|Eulepte Solis 15[654]BOLD:ACK7939
 Hymenochaonia lizlangleyae[437]DHJPAR0009306|Eulepte Solis 15[654]BOLD:ACK7939
 Hymenochaonia lizlangleyae[438]DHJPAR0009309|Eulepte Solis 15[648]BOLD:ACK7939
 Hymenochaonia lizlangleyae[439]DHJPAR0009305|Eulepte Solis 15[648]BOLD:ACK7939
 Hymenochaonia lizlangleyae[440]DHJPAR0009325|Eulepte Solis 15[654]BOLD:ACK7939
 Hymenochaonia lizlangleyae[441]DHJPAR0036306|Syllepte aechmisalis[658]BOLD:ACK7939
 Hymenochaonia lizlangleyae[442]DHJPAR0028991|Syllepte aechmisalis[645]BOLD:ACK7939
 Hymenochaonia Whitfield04[443]DHJPAR0029404|Lygropia tripunctataDHJ01|259[0n]
 Hymenochaonia Whitfield04[444]DHJPAR0029374|Syllepte aechmisalisDHJ02|275[0n]
 Hymenochaonia Whitfield04[445]DHJPAR0029407|Eulepte Solis 15[267]BOLD:ACK7939
 Hymenochaonia Whitfield04[446]DHJPAR0029370|Syllepte aechmisalisDHJ02|285[0n]
 Hymenochaonia Whitfield04[447]DHJPAR0029403|Lygropia tripunctataDHJ01|280[0n]
 Hymenochaonia Whitfield04[448]DHJPAR00029410|Eulepte Solis 15[278]BOLD:ACK7939
 Hymenochaonia Whitfield04[449]DHJPAR00029411|Eulepte Solis 15[289]BOLD:ACK7939
 Hymenochaonia Whitfield04[450]DHJPAR0029423|Eulepte Solis 15[280]BOLD:ACK7939
 Hymenochaonia Whitfield04[451]DHJPAR0029421|Eulepte Solis 15[289]BOLD:ACK7939
 Hymenochaonia Whitfield04[452]DHJPAR0029419|Eulepte Solis 15[286]BOLD:ACK7939
 Hymenochaonia Whitfield04[453]DHJPAR0029424|Eulepte Solis 15[289]BOLD:ACK7939
 Hymenochaonia Whitfield04[454]DHJPAR0029422|Eulepte Solis 15[289]BOLD:ACK7939
 Hymenochaonia Whitfield04[455]DHJPAR0029412|Eulepte Solis 15[281]BOLD:ACK7939
 Hymenochaonia lizlangleyae[456]DHJPAR0009326|Eulepte Solis 15[654]BOLD:ACK7939
 Hymenochaonia lizlangleyae[457]BIOUG06141-D03|BSE Malaise Trap|658[0n]BOLD:ACK7939
 Hymenochaonia lizlangleyae[458]DHJPAR0009308|Eulepte Solis 15[345]BOLD:ACK7939
 Hymenochaonia lizlangleyae[459]DHJPAR0029409|Eulepte Solis 15[465]BOLD:ACK7939
 Hymenochaonia lizlangleyae[460]DHJPAR0041541|Eulepte Solis 15[629]BOLD:ACK7939
 Hymenochaonia lizlangleyae[461]DHJPAR0009307|Eulepte Solis 15[615]BOLD:ACK7939
 Dolichozele josefernandeztrianai[462]DHJPAR0028979|Goniohelia Poole02|657[0n]BOLD:ACK6060
 Dolichozele gravitarsis[463]DHJPAR0029354|Hypocrisias Espinoza01|628[0n]BOLD:AAI9864
 Dolichozele gravitarsis[464]DHJPAR0029352|Hypocrisias Espinoza01|254[0n]
 Dolichozele gravitarsis[465]DHJPAR0029355|Hypocrisias Espinoza01|283[0n]
 Dolichozele gravitarsis[466]DHJPAR0029353|Hypocrisias Espinoza01|283[0n]
 Dolichozele gravitarsis[467]DHJPAR0027736|Turuptiana obliqua|660[0n]BOLD:AAI9864
 Dolichozele josephinerodriguezae[468]DHJPAR0021114|Bagisara albicosta|660[0n]BOLD:AAF3799
 Dolichozele josephinerodriguezae[469]BIOUG55213-G09|Malaise trap PL12-3D|653[0n]BOLD:AAF3799
 Dolichozele josephinerodriguezae[470]BIOUG53715-E04|Malaise trap PL12-5C|654[0n]BOLD:AAF3799
 Dolichozele josephinerodriguezae[471]BIOUG07912-A10|BSE Malaise Trap|594[0n]BOLD:AAF3799
 Dolichozele josephinerodriguezae[472]DHJPAR0021564|Bagisara albicosta|657[3n]BOLD:AAF3799
 Dolichozele josephinerodriguezae[473]DHJPAR0029417|Bagisara albicosta|657[0n]BOLD:AAF3799
 Dolichozele josephinerodriguezae[474]BIOUG06141-D08|BSE Malaise Trap|615[0n]BOLD:AAF3799
 Dolichozele josephinerodriguezae[475]DHJPAR0029357|Bagisara albicosta|627[0n]BOLD:AAF3799
 Dolichozele josephinerodriguezae[476]DHJPAR0029356|Bagisara albicosta|627[0n]BOLD:AAF3799
 Dolichozele josephinerodriguezae[477]DHJPAR0029415|Bagisara albicosta|632[0n]BOLD:AAF3799
 Dolichozele josephinerodriguezae[478]DHJPAR0029416|Bagisara albicosta|632[0n]BOLD:AAF3799
 Dolichozele josephinerodriguezae[479]BIOUG08276-D05|BSE Malaise Trap|594[0n]BOLD:AAF3799
 Dolichozele josephinerodriguezae[480]BIOUG08078-F08|BSE Malaise Trap|594[0n]BOLD:AAF3799
 Dolichozele josephinerodriguezae[481]BIOUG17484-F11|BSE Malaise Trap|591[0n]BOLD:AAF3799
 Dolichozele josephinerodriguezae[482]DHJPAR0029413|Euclystis guerinii|266[0n]
 Dolichozele josephinerodriguezae[483]BIOUG08276-D04|BSE Malaise Trap|606[0n]BOLD:AAF3799
 Austrozele jorgesoberoni[484]DHJPAR0054453|Acrotomodes bolaDHJ01|658[0n]BOLD:AAF0520
 Austrozele jorgesoberoni[485]DHJPAR0042749|Pyrinia Janzen02|658[0n]BOLD:AAF0520
 Austrozele jorgesoberoni[486]DHJPAR0009365|Pyrinia Janzen02|651[5n]BOLD:AAF0520
 Austrozele jorgesoberoni[487]DHJPAR0029343|Pyrinia Janzen02|626[0n]BOLD:AAF0520
 Austrozele jorgesoberoni[488]DHJPAR0054444|Acrotomodes bolaDHJ01|658[0n]BOLD:AAF0520
 Austrozele jorgesoberoni[489]DHJPAR0054443|Pyrinia Janzen02|658[0n]BOLD:AAF0520
 Austrozele jorgesoberoni[490]DHJPAR0054447|Acrotomodes bolaDHJ01|658[0n]BOLD:AAF0520
 Austrozele jorgesoberoni[491]DHJPAR0061237|light trap|658[0n]BOLD:AAF0520
 Austrozele jorgesoberoni[492]DHJPAR0054445|Acrotomodes bolaDHJ01|658[0n]BOLD:AAF0520
 Austrozele jorgesoberoni[493]DHJPAR0063839|Acrotomodes bolaDHJ01|658[0n]BOLD:AAF0520
 Austrozele jorgesoberoni[494]DHJPAR0054446|Acrotomodes bolaDHJ01|658[0n]BOLD:AAF0520
 Austrozele Janzen520[495]DHJPAR0029345|Pyrinia Janzen02|280[0n]
 Austrozele jorgesoberoni[496]DHJPAR0065120|geoJanzen01 Janzen916|631[0n]BOLD:AAF0520
 Austrozele jorgesoberoni[497]BIOUG28820-C07|Malaise trap PL12-7A|588[0n]BOLD:AAF0520
 Austrozele jorgesoberoni[498]DHJPAR0029348|Pyrinia Janzen02|632[0n]BOLD:AAF0520
 Austrozele jorgescampabadali[499]BIOUG29495-F08|Malaise trap PL12-6A|600[0n]BOLD:AAE4116
 Austrozele jorgescampabadali[500]BIOUG30521-G05|Malaise trap PL12-6A|589[0n]BOLD:AAE4116
 Austrozele jorgescampabadali[501]BIOUG46866-D08|Malaise trap PL12-5B|653[0n]BOLD:AAE4116
 Austrozele jorgescampabadali[502]DHJPAR0030311|Dunama janewaldronae|606[0n]BOLD:AAE4116
 Austrozele jorgescampabadali[503]DHJPAR0030381|Dunama janewaldronae|658[0n]BOLD:AAE4116
 Austrozele jorgescampabadali[504]BIOUG55305-G11|Malaise trap PL12-6D|655[0n]BOLD:AAE4116
 Austrozele jorgescampabadali[505]BIOUG48398-G11|Malaise trap PL12-5A|651[0n]BOLD:AAE4116
 Austrozele jorgescampabadali[506]BIOUG55294-B04|Malaise trap PL12-4D|655[0n]BOLD:AAE4116
 Austrozele jorgescampabadali[507]BIOUG55305-G08|Malaise trap PL12-6D|652[0n]BOLD:AAE4116
 Austrozele jorgescampabadali[508]DHJPAR0009366|Dunama janewaldronae|654[3n]BOLD:AAE4116
 Austrozele jorgescampabadali[509]DHJPAR0009367|Dunama janewaldronae|654[1n]BOLD:AAE4116
 Austrozele jorgescampabadali[510]DHJPAR0061211|light trap|658[0n]BOLD:AAE4116
 Austrozele jorgescampabadali[511]BIOUG29495-F09|Malaise trap PL12-6A|582[0n]BOLD:AAE4116
 Austrozele jorgescampabadali[512]DHJPAR0029346|Dunama jessiehillaie|421[0n]BOLD:AAE4116
 Austrozele Janzen4116[513]DHJPAR0029344|Dunama jessiehillaie|278[0n]
 Austrozele Janzen4116[514]DHJPAR0029377|Dunama jessiehillaie|279[0n]
 Austrozele Janzen4116[515]DHJPAR0029347|Dunama jessiehillaie|286[0n]
 Austrozele Janzen4116[516]DHJPAR0029342|Dunama jessiehillaie|286[0n]
 Austrozele Janzen4116[517]DHJPAR0029378|Dunama jessiehillaie|286[0n]
 Austrozele jorgescampabadali[518]DHJPAR0009370|Dunama janewaldronae|651[1n]BOLD:AAE4116