

SUPPLEMENTAL MATERIAL

Table S1. Association of Concordant and Discordant Groups with Perceived Limitations.

	Beck Depression Inventory II Score		Multidimensional Scale of Perceived Social Support		Borg Rating at Peak Exercise	
	β Coefficient [95% CI]	P	β Coefficient [95% CI]	P	β Coefficient [95% CI]	P
Concordant-Lower Severity	Ref.	---	Ref.	---	Ref.	---
Symptom Magnifier	7.34 [6.43, 8.26]	<0.001	-0.46 [-0.61, -0.31]	<0.001	0.38 [0.08, 0.67]	0.012
Symptom Minimizer	0.19 [-0.76, 1.13]	0.70	0.00 [-0.15, 0.15]	0.98	0.05 [-0.25, 0.36]	0.74
Concordant-Higher Severity	7.54 [6.64, 8.44]	<0.001	-0.31 [-0.46, -0.17]	<0.001	0.54 [0.25, 0.82]	<0.001

95% CI are displayed as [lower bound, upper bound].

Models were adjusted for age, sex, and race.

Table S2. Association of Concordant and Discordant Groups with Baseline Perception of Limitations as Assessed by BDI II and EuroQoL Questions.

	Beck Depression Inventory II								EuroQoL			
	Pessimism		Past Failure		Self-Dislike		Self-Criticalness		Immobility		Anxiety / Depression	
	OR [95% CI]	P	OR [95% CI]	P	OR [95% CI]	P	OR [95% CI]	P	OR [95% CI]	P	OR [95% CI]	P
Concordant-Lower Severity	Ref.	---	Ref.	---	Ref.	---	Ref.	---	Ref.	---	Ref.	---
Symptom Magnifier	1.3 [1.2-1.3]	<0.001	1.2 [1.1-1.3]	<0.001	1.2 [1.1-1.3]	<0.001	1.2 [1.1-1.3]	<0.001	1.5 [1.4-1.6]	<0.001	1.3 [1.2-1.4]	<0.001
Symptom Minimizer	1.0 [0.9-1.0]	0.06	1.0 [0.9-1.0]	0.42	1.0 [0.9-1.1]	0.87	1.0 [0.9-1.1]	0.83	1.1 [1.0-1.2]	0.004	1.0 [0.9-1.0]	0.53
Concordant-Higher Severity	1.3 [1.2-1.3]	<0.001	1.1 [1.1-1.2]	<0.001	1.2 [1.1-1.3]	<0.001	1.2 [1.1-1.3]	<0.001	1.6 [1.5-1.7]	<0.001	1.3 [1.2-1.4]	<0.001

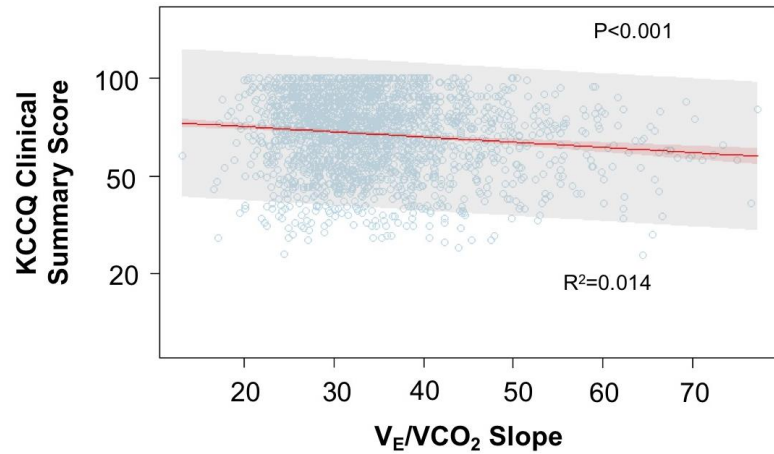
Models were adjusted for age, sex, and race.

Table S3. Cox Proportional Hazards of Long-term Clinical Outcomes by Concordant and Discordant Groups.

	All-Cause Mortality or All-Cause Hospitalization		All-Cause Mortality		All-Cause Hospitalization	
	HR [95% CI]	P	HR [95% CI]	P	HR [95% CI]	P
Concordant-Lower Severity	Ref.	---	Ref.	---	Ref.	---
Symptom Magnifier	1.31 [1.12-1.53]	<0.001	1.42 [0.98-2.04]	0.063	1.39 [1.17-1.66]	<0.001
Symptom Minimizer	1.37 [1.17-1.60]	<0.001	1.79 [1.28-2.51]	<0.001	1.42 [1.19-1.70]	<0.001
Concordant-Higher Severity	1.86 [1.60-2.15]	<0.001	2.43 [1.77-3.34]	<0.001	1.92 [1.63-2.26]	<0.001

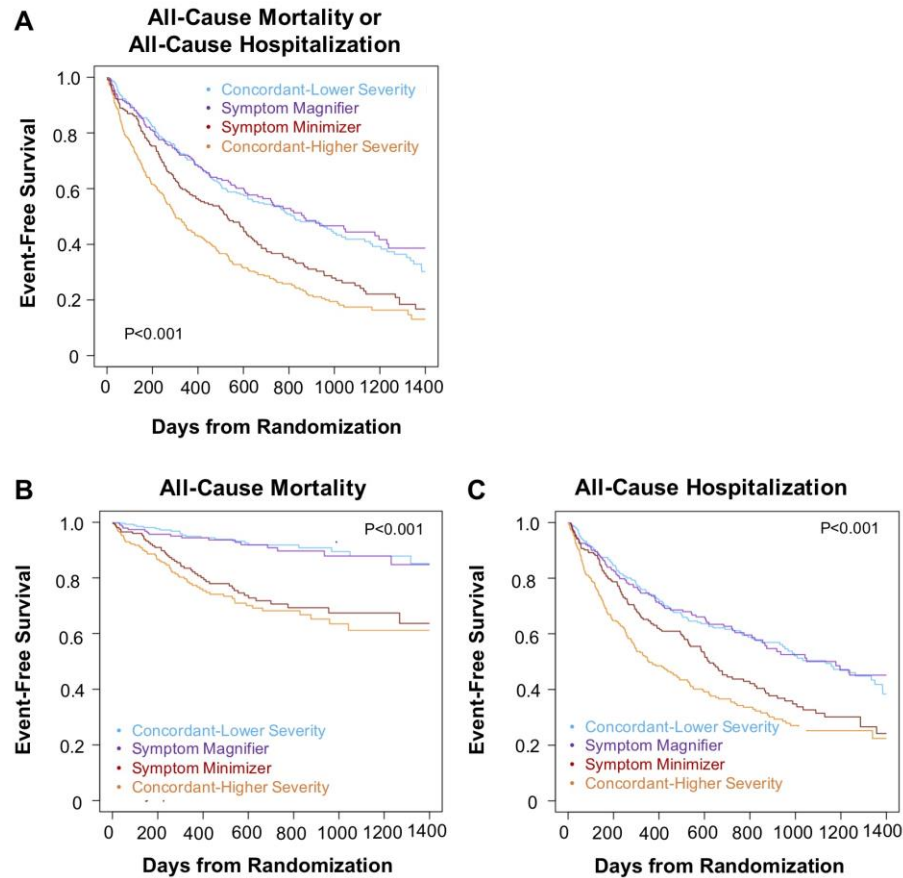
Models were adjusted for age, sex, race, depression, and obesity.

Figure S1. Scatter Plot Examining the Relationship between KCCQ Clinical Summary Score and V_E/V_{CO_2} Slope.



The fitted line represents the linear regression model. The overall model was statistically significant ($P<0.001$) but explained only 1.4% of this relationship ($R^2=0.014$)

Figure S2. Kaplan-Meier Survival Curves for Time to Clinical Outcomes Stratified by Concordant and Discordant Groups Using Peak VO₂ as the Objective Measure of Heart Failure Severity.



Kaplan-Meier survival curves are shown for time to A) all-cause mortality or all-cause hospitalization (P < 0.001 for all comparisons), B) all-cause mortality (P < 0.001 for all comparisons), and C) all-cause hospitalization (P < 0.001 for all comparisons)