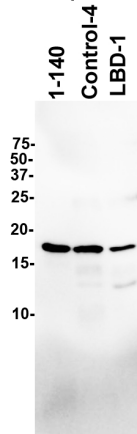
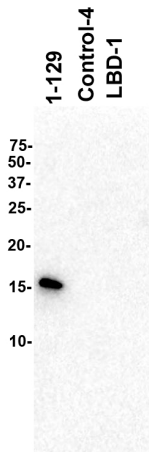


Supplemental Figure 1

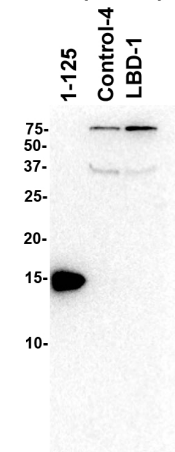
3H11 (43-62)



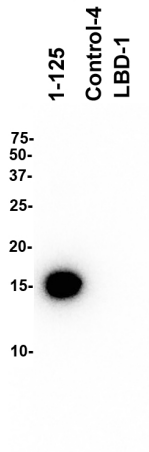
2G7 (x-129)



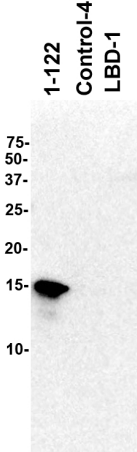
2B1 (x-125)



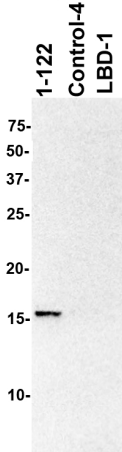
5C1 (x-125)



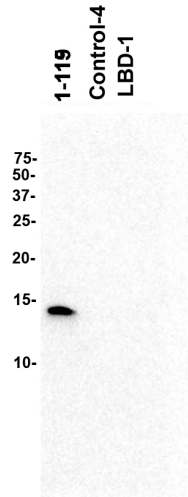
10A4 (x-122)



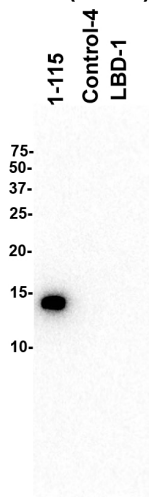
6G2 (x-122)



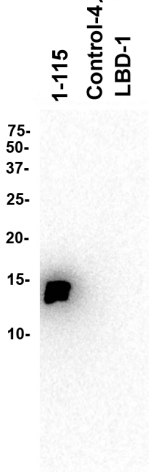
4H11 (x-119)



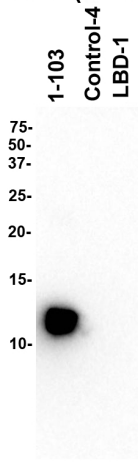
1B1 (x-115)



3G11 (x-115)



2G5 (x-103)



Supplemental Figure 2

Antibody name and preparation type	Dilution for ELISA	Dilution for Western blotting	Dilution for IHC
2G5 (TC supernatant)	1:2	1:2	none
1B1 (TC supernatant)	1:2	1:2	1:10
3G11 (TC supernatant)	1:2	1:2	none
4H11 (TC supernatant)	1:2	1:2	none
6G2 (TC supernatant)	1:2	1:2	none
10A4 (TC supernatant)	1:2	1:2	none
5C1 (TC supernatant)	1:2	1:2	none
2B1 (TC supernatant)	1:2	1:2	none
2G9 (TC supernatant)	1:2	1:2	none
3H11 (ascites fluid)	1:5000	1:1000	NA
94-3A10 (ascites fluid)	NA	NA	1:10,000
2H6 (ascites fluid)	1:2000	NA	NA

Supplemental Table 1. Dilution of Antibody Used. TC, tissue culture media.