

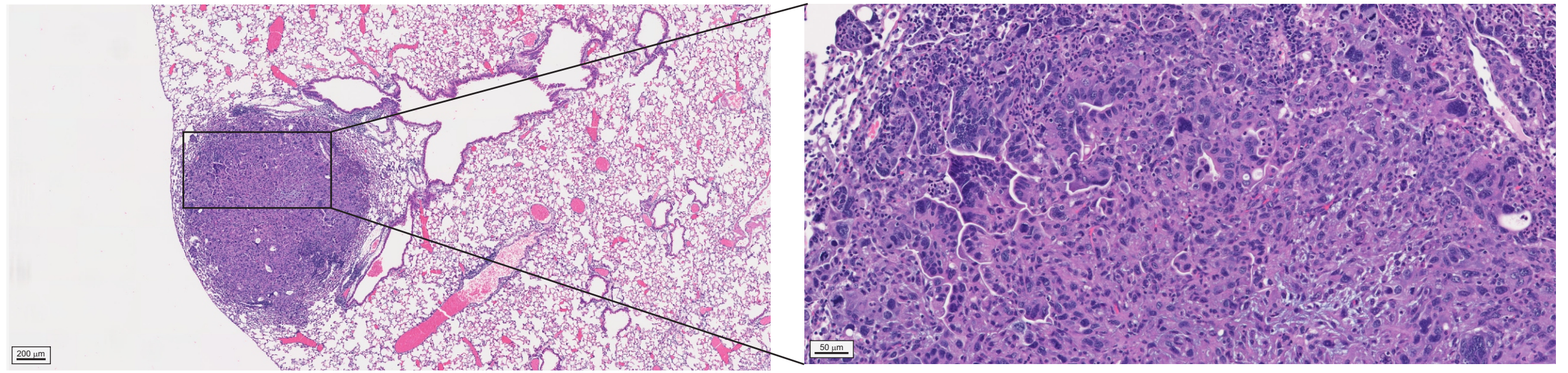
Table S1. FACS antibodies.

Immune Marker	Fluorophore	Clone
CD45	perCP/Cy5.5	30-F11
CD3	AF700	17A2
CD8	BV421	53-6.7
CD4	BV650	GK1.5
CD25	APC	PC61
FOXP3	PE	150D
PD1	PE-Cy7	29F.1A12
Tim3	PE	RMT3-23
Ki67	BV605	16A8
CD11c	FITC	HL3
IA/IE	BV650	M5/114.15.2
CD11b	AF700	M1/70
Ly6C	APC	HK1.4
Ly6G	PE	1A8
CD64	PE-Cy7	X54-5/7.1
PD-L1	BV421	29E.2A3
Zombie NIR		

Fig S1

A

KP



B

KPL

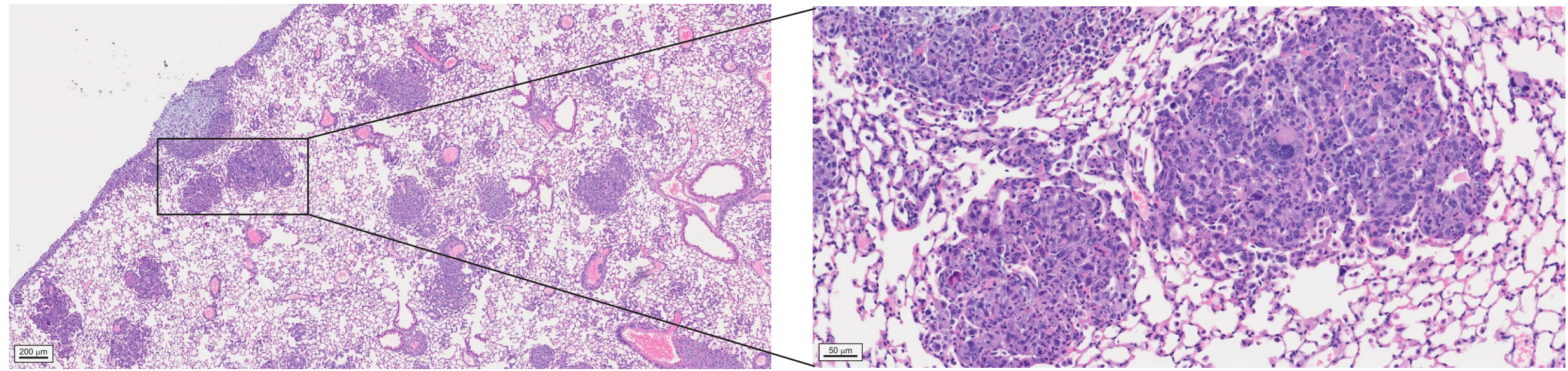
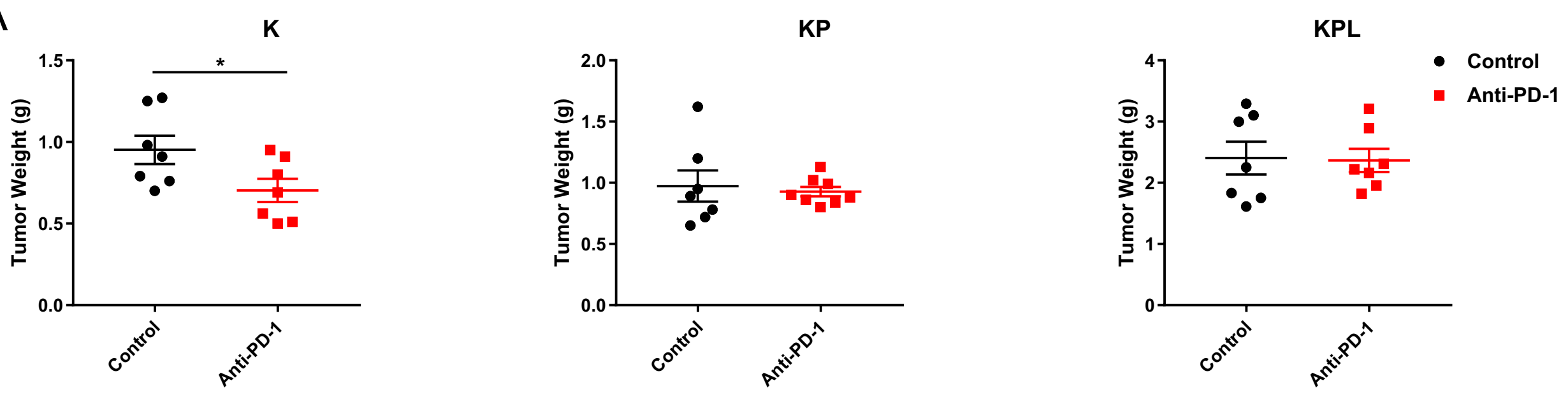
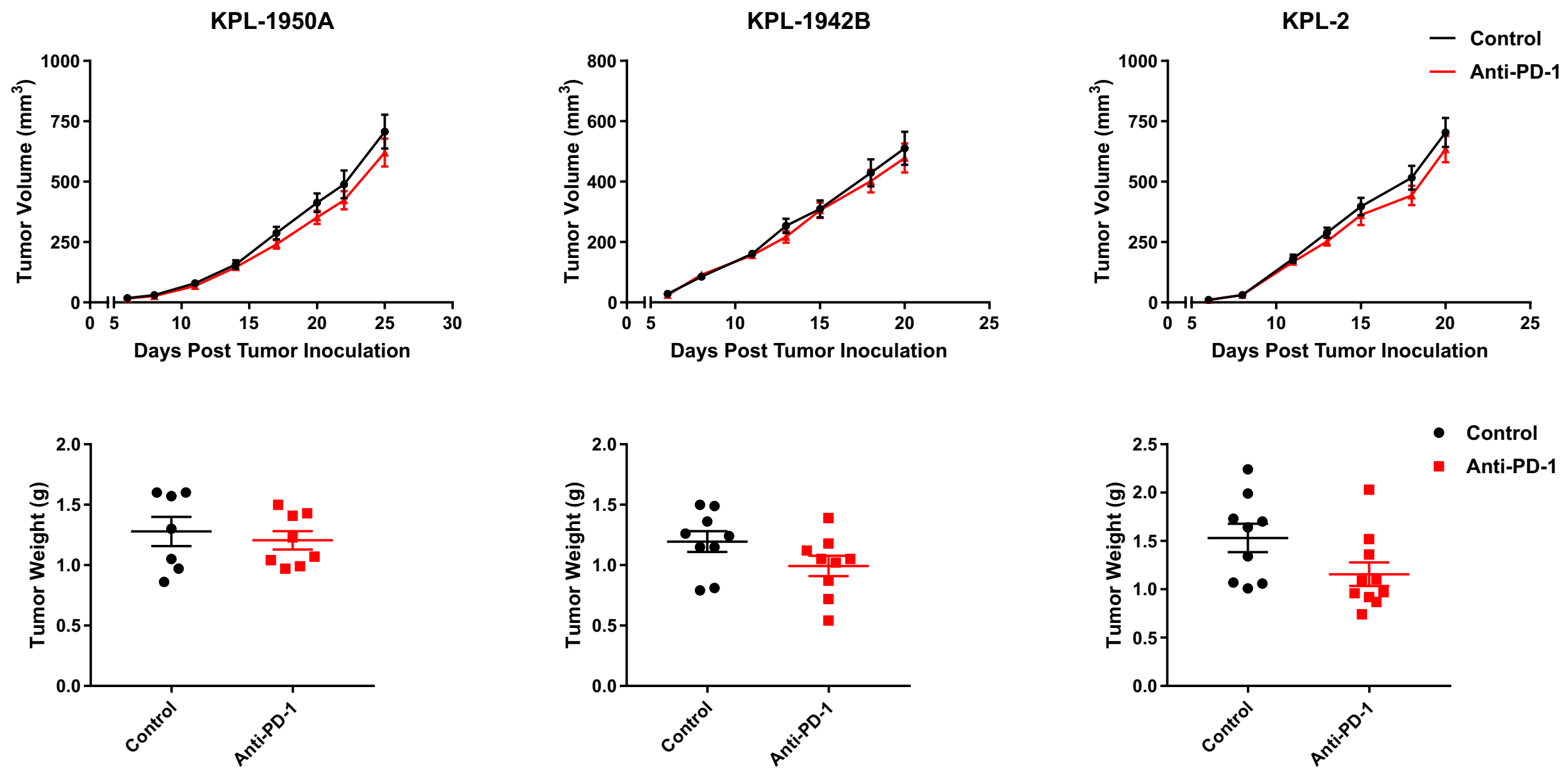


Fig S2

A



B



C

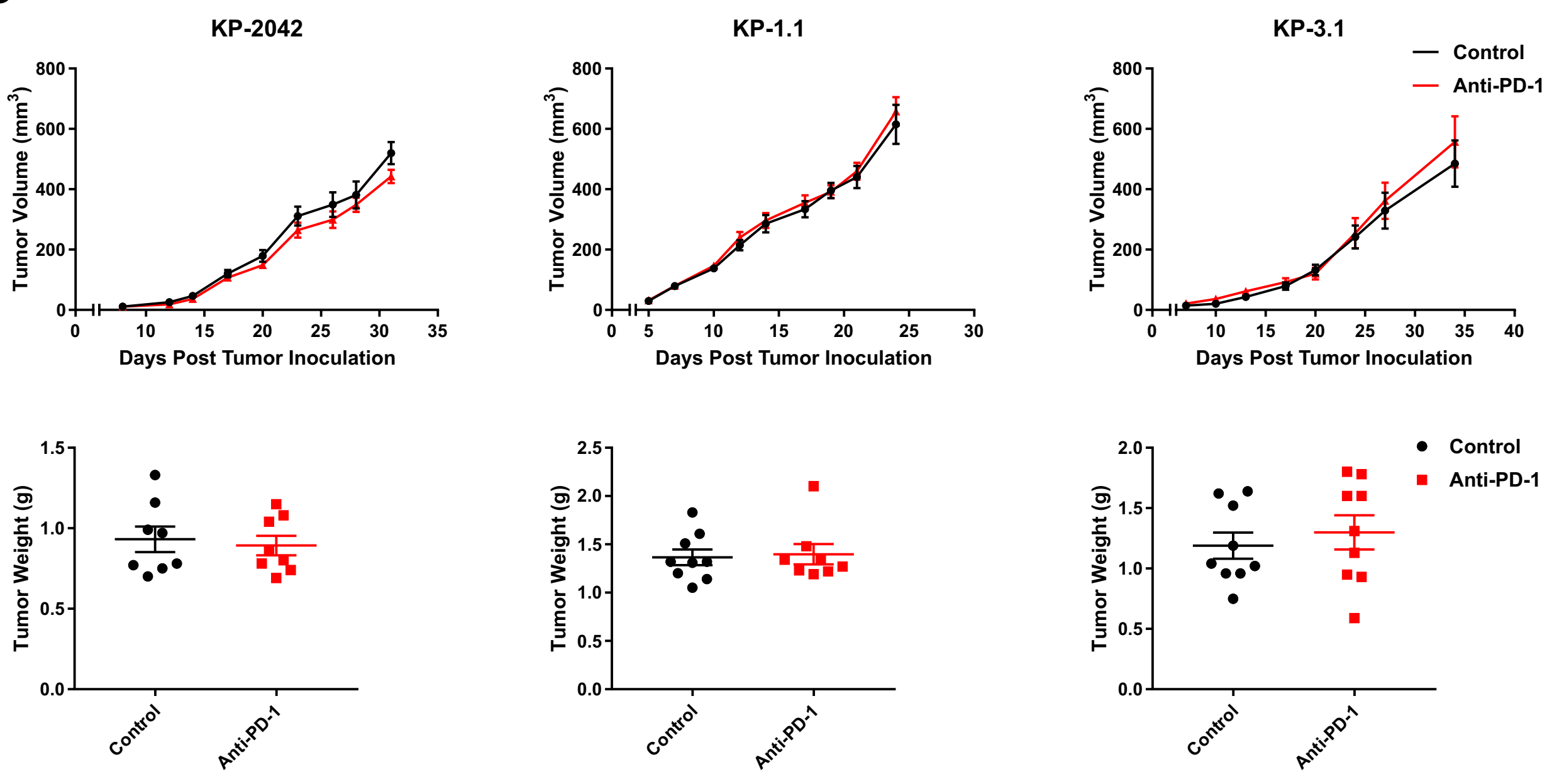


Fig S2

D

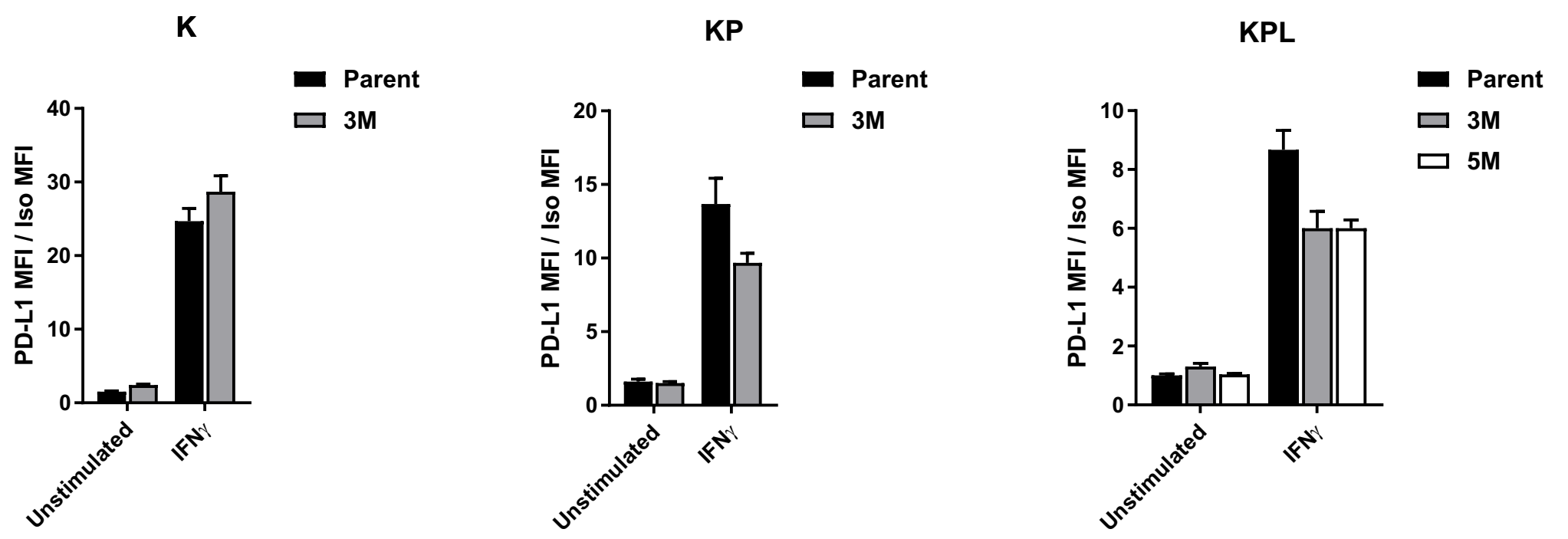
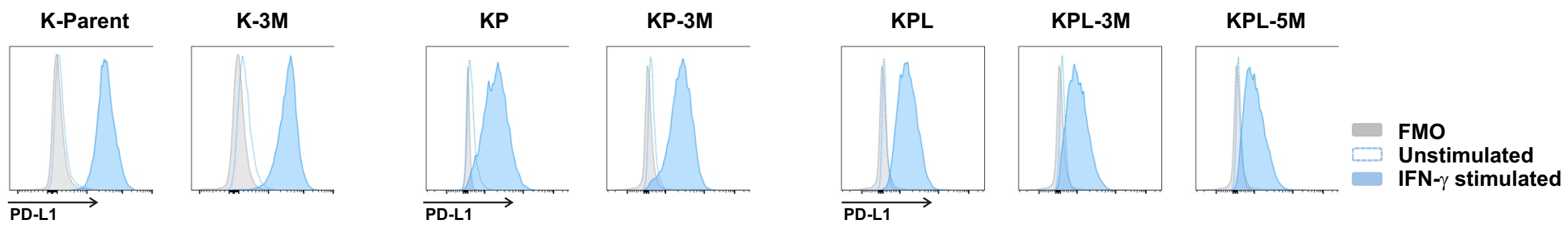


Fig S3

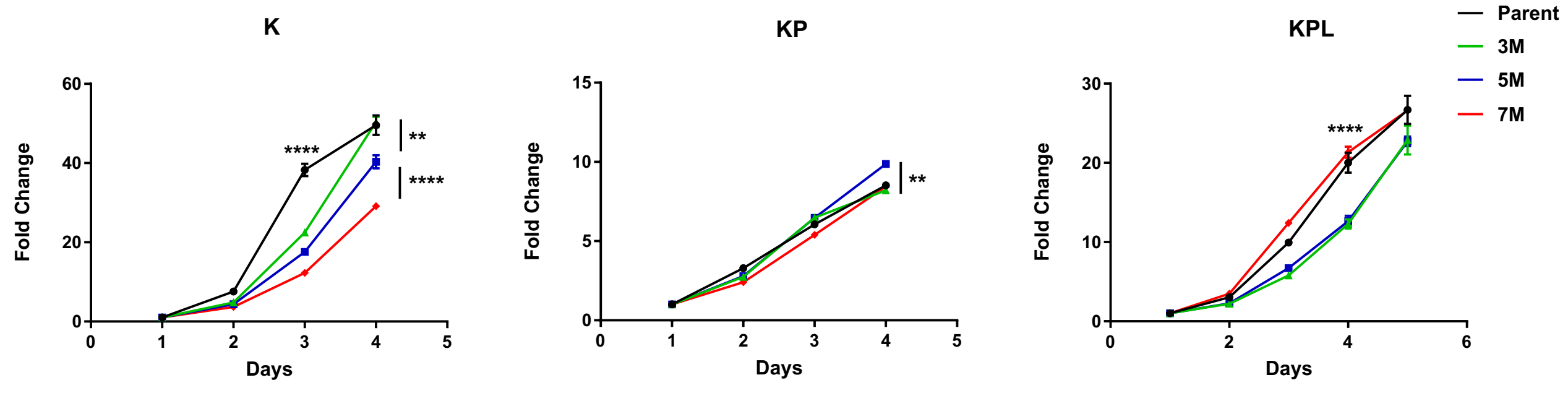
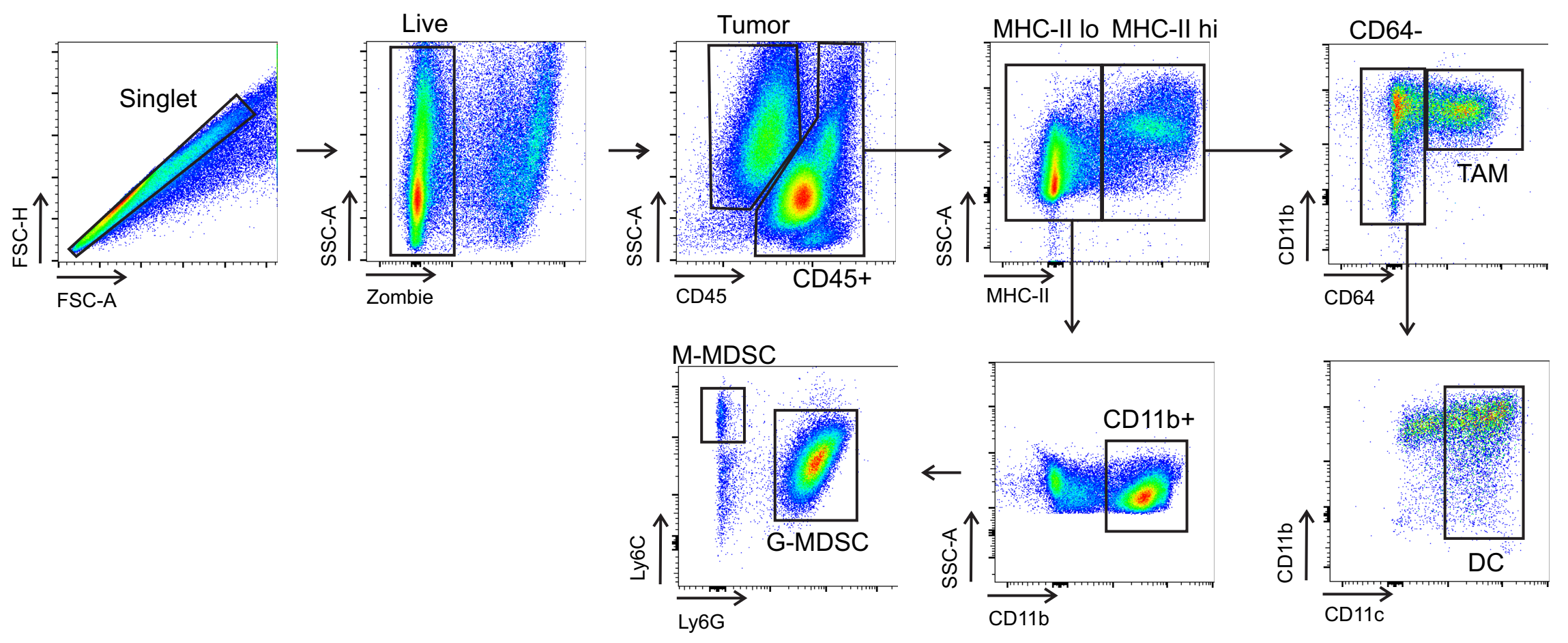
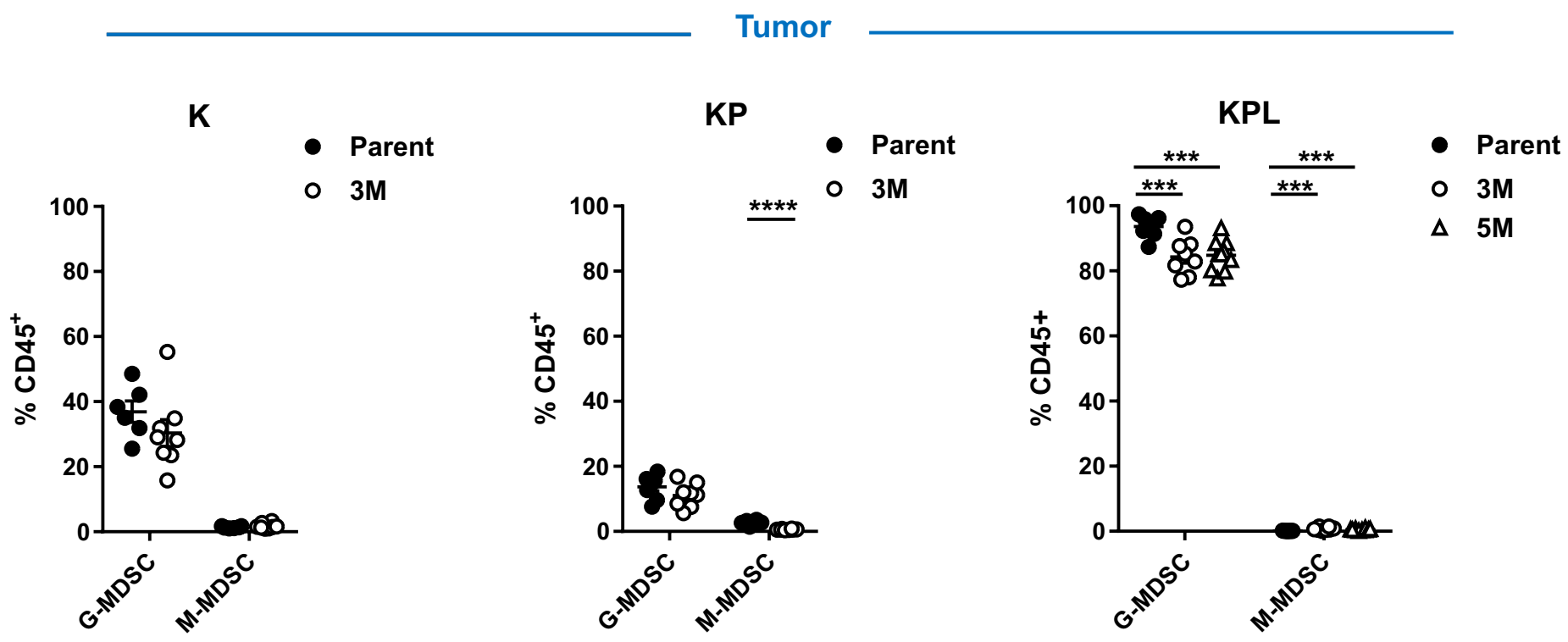


Fig S4

A



B



C

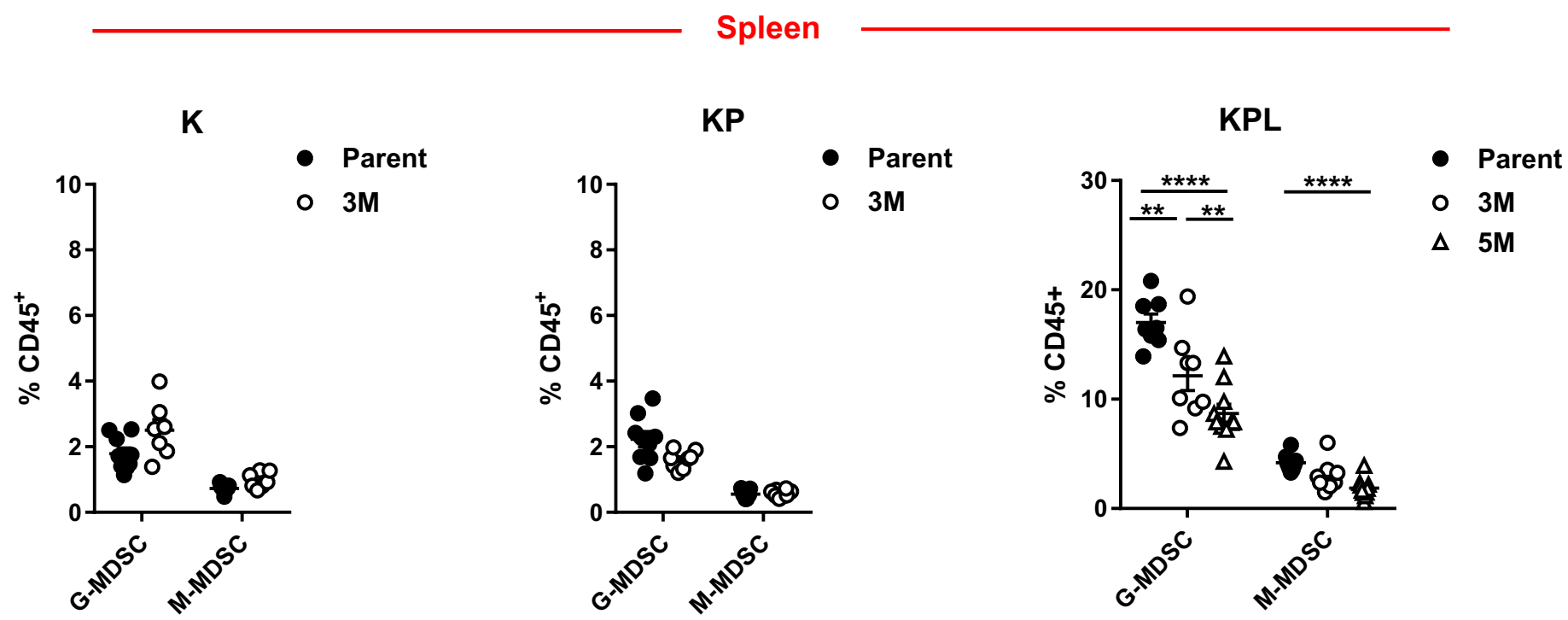
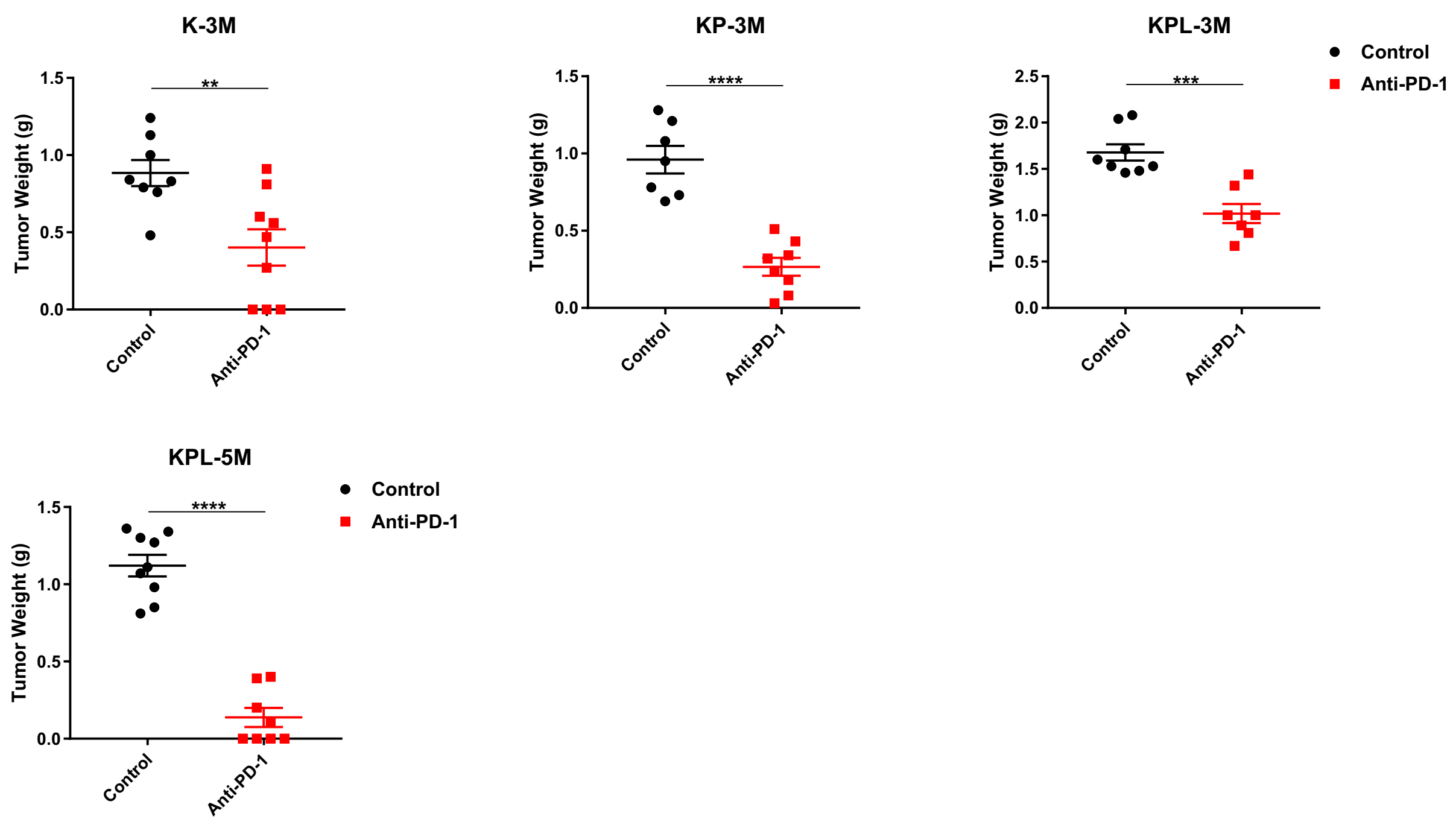


Fig S5

A



B

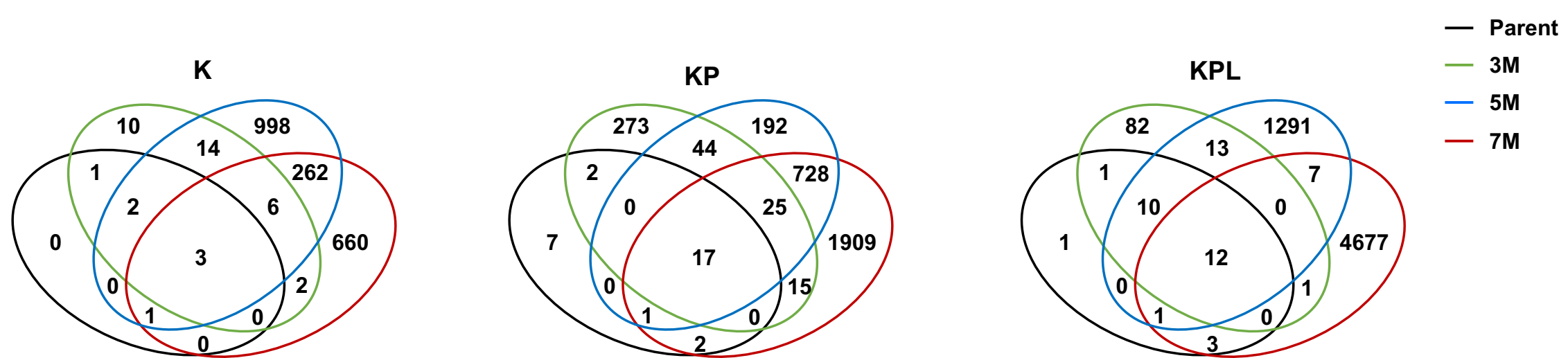


Table S2. Summary of Key Characteristics of *Kras*-Mutant NSCLC Cell Lines.

Genetic background	Cell ID	TMB (per Mb)	TME (% of immune cells)					Anti-PD-1 Efficacy
			CD4	CD8	G-MDSC	TAM	DC	
<i>Kras</i> ^{G12D} (K)	Parent	0.67	5%	6%	38%	7%	4%	Modest
	3M	3.18	4%	11%	32%	6%	4%	Robust
<i>Kras</i> ^{G12DP53^{-/-}} (KP)	Parent	1.71	2%	<1%	15%	7%	4%	Resistant
	3M	22.13	4%	3%	14%	6%	5%	Robust
<i>Kras</i> ^{G12DP53^{-/-}LKB1^{-/-}} (KPL)	Parent	1.75	<1%	<1%	95%	<1%	<1%	Resistant
	3M	7.22	2%	1%	84%	4%	<1%	Modest
	5M	81.67	3%	2%	84%	4%	<1%	Robust