

Fig. S2A. PROMER alignments of final *Sulcia* genomes from three Dictyopharidae species: *Callodictya krueperi* (CALKRU), *Dictyophara multireticulata* (DICMUL), and *Ranissus scytha* (RANSKY) against the *Sulcia* genome from *Oliarus filicicola* (OLIH; family Cixiidae).

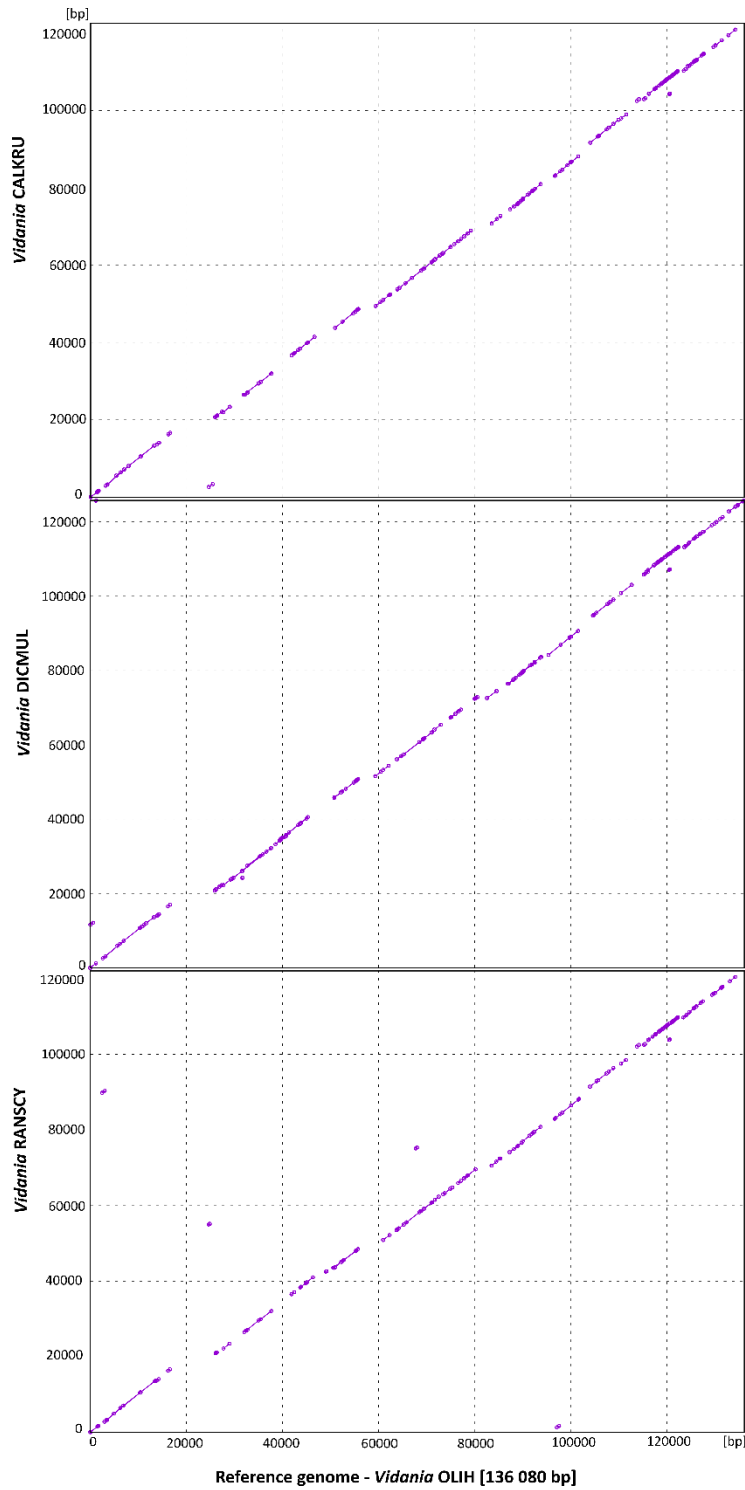


Fig. S2B. PROMER alignments of final *Vidania* genomes from three Dictyopharidae species: *Callodictya krueperi* (CALKRU), *Dictyophara multireticulata* (DICMUL), and *Ranissus scytha* (RANSCY) against the *Vidania* genome from *Oliarus filicicola* (OLIH; Cixiidae).