

Fig. S3A. *Dictyophara pannonica*. Two morphotypes of *Sodalis* symbiont (red and yellow arrows) within bacteriome of single individuals. TEM, scale bar = 2 μ m

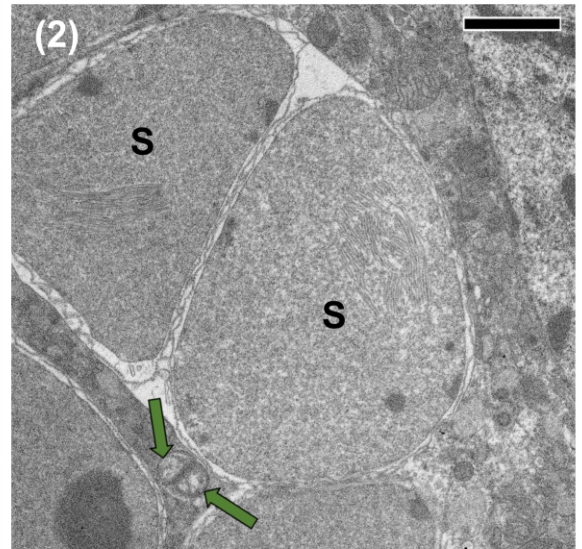
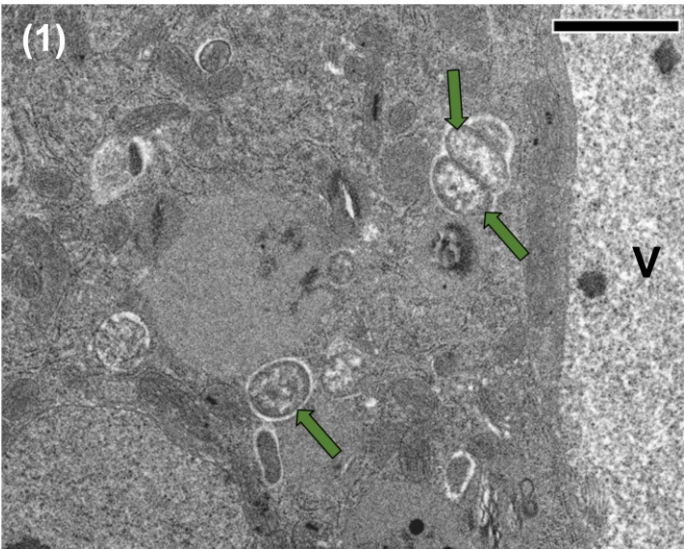


Fig. S3B. Distribution of *Wolbachia* symbiont in the Dictyopharidae species. Bacteria *Wolbachia* (green arrows) in the cytoplasm of the *Vidania* (1) and *Sulcia* (2) bacteriocytes. (1) *Callodictya krueperi*, (2). *Dictyophara europaea*. TEM, scale bar = 2 μ m. S - *Sulcia*, V - *Vidania*