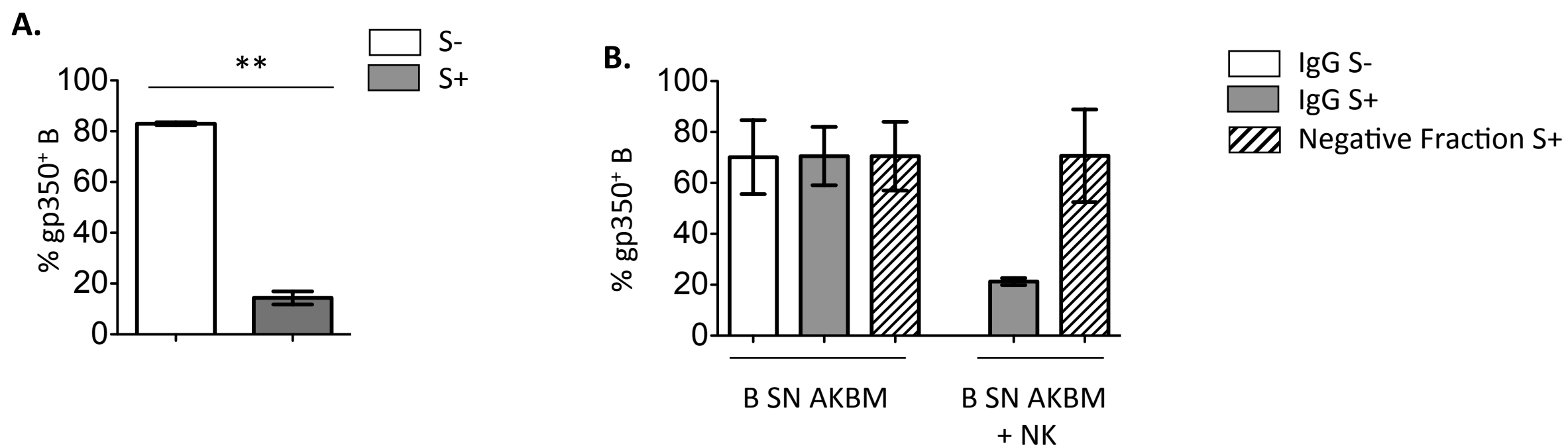


S2 Supplementary figure



S2 Supplementary figure. Serum and purified serum IgG from EBV+ donors promotes NK cell-

mediated elimination of viral particles coating B cells. (A, B) B cells were incubated with AKBM SN and

stained for gp350. **(A)** B cells cultured with NK and 3% of serum from EBV S- (n=5) and EBV S+ (n=6)

donors for 4h at 37°C. The percentage of gp350⁺ B was analyzed. Statistical analysis was performed with

Mann-Whitney test. **(B)** B cells were cultured with or without NK cells, and with 0.45mg/ml IgG purified

from EBV S- or S+ serum or the equivalent IgG-negative fraction of EBV S+ serum. The percentage of

gp350⁺ B cells of two experiments is shown.