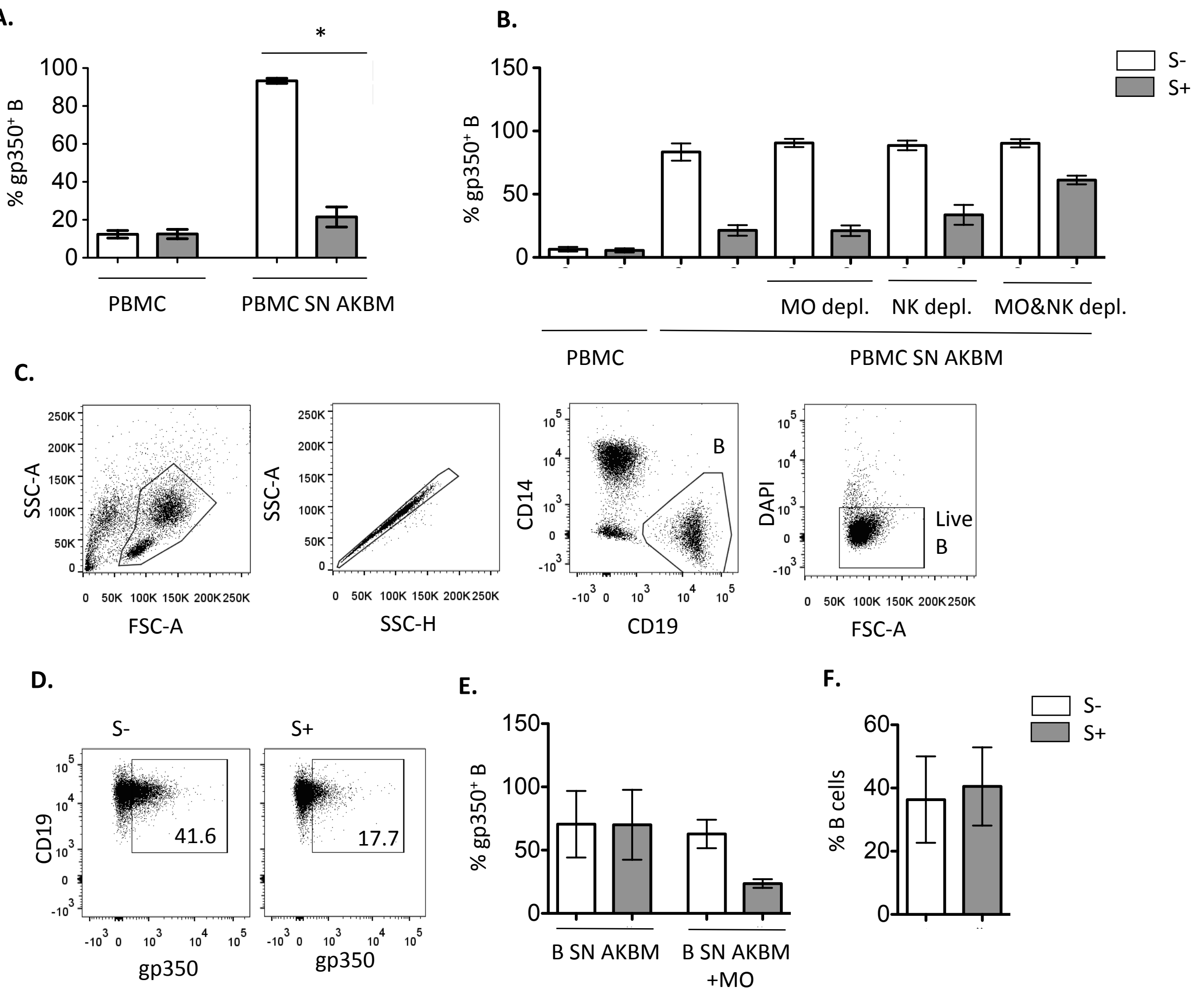


S3 Supplementary figure



S3 Supplementary figure. Peripheral blood monocytes remove VP attached to B cells through anti-

EBV Abs. (A) PBMC were incubated with AKBM SN, stained for gp350, cultured with EBV S- or S+

serum for 4h and analyzed for gp350 staining on B cells (n=5). Wilcoxon test was applied to the last two

groups. (B) PBMC depleted or not of monocytes (MO), NK cells or both were incubated with AKBM SN,

washed, stained for gp350, cultured with EBV S- or S+ serum for 4h and analyzed for gp350 staining on B

cells (n=3). (C-F) B cells were incubated with AKBM SN, washed, stained for gp350, and co-cultured

alone or with purified autologous MO at a 1:1 ratio in the presence of EBV S- or S+ serum. (C-D)

Representative gating strategy and Gp350 expression on B cells. (E-F) Results of three different

experiments and % B cells detected after co-cultures.